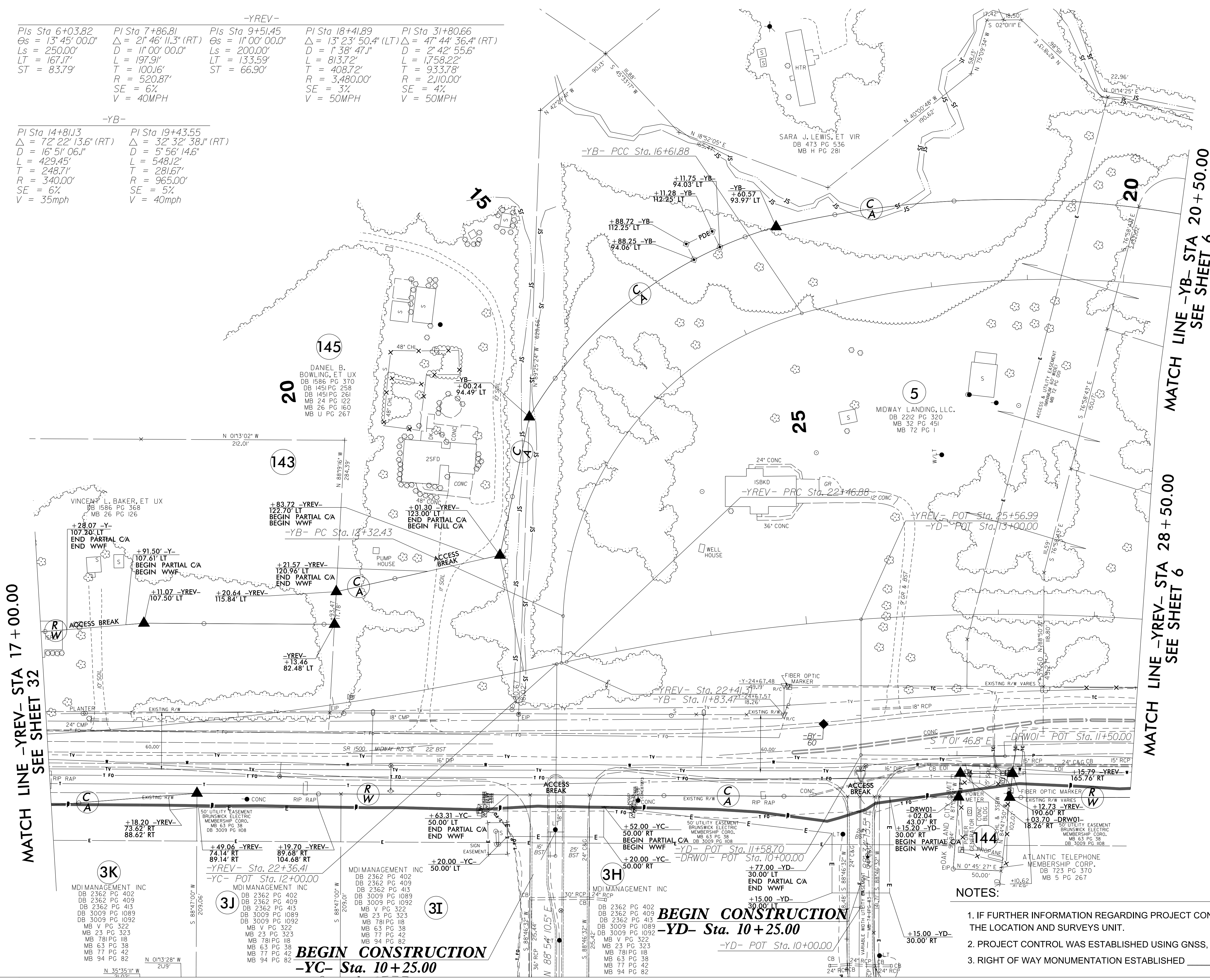


6/2/19

REVISIONS

-YREV-				
PIs Sta 6+03.82	PI Sta 7+86.81	PIs Sta 9+51.45	PI Sta 18+41.89	PI Sta 31+80.66
$\Delta = 13^{\circ} 45' 00.0"$	$\Delta = 21^{\circ} 46' 11.3" (RT)$	$\Delta = 11^{\circ} 00' 00.0"$	$\Delta = 13^{\circ} 23' 50.4" (LT)$	$\Delta = 47^{\circ} 44' 36.4" (RT)$
$Ls = 250.00'$	$D = 11^{\circ} 00' 00.0"$	$Ls = 200.00'$	$D = 1^{\circ} 38' 47.1"$	$D = 2^{\circ} 42' 55.6"$
$LT = 167.17'$	$L = 197.91'$	$LT = 133.59'$	$L = 813.72'$	$L = 1,758.22'$
$ST = 83.79'$	$T = 100.16'$	$ST = 66.90'$	$T = 408.72'$	$T = 933.78'$
	$R = 520.87'$		$R = 3,480.00'$	$R = 2,110.00'$
	$SE = 6\%$		$SE = 3\%$	$SE = 4\%$
	$V = 40MPH$		$V = 50MPH$	$V = 50MPH$

-YB-	
PI Sta 14+81.13	PI Sta 19+43.55
$\Delta = 72^{\circ} 22' 13.6" (RT)$	$\Delta = 32^{\circ} 32' 38.1" (RT)$
$D = 16^{\circ} 51' 06.1"$	$D = 5^{\circ} 56' 14.6"$
$L = 429.45'$	$L = 548.12'$
$T = 248.71'$	$T = 281.67'$
$R = 340.00'$	$R = 965.00'$
$SE = 6\%$	$SE = 5\%$
$V = 35mph$	$V = 40mph$



PROJECT REFERENCE NO.	SHEET NO.
R-5021	RW33
Location and Surveys	
ESP ASSOCIATES, INC. 211 RACINE DRIVE, SUITE 101 WILMINGTON, NC 28403	
PROJECT SURVEYOR	
DOCUMENT NOT CONSIDERED FINAL UNLESS ALL SIGNATURES COMPLETED	

NAD 83/NSRS 2007

I, Donald E. Thomas, certify that the right of way and permanent easement monumentation for this project shown herein was completed under my direct and responsible charge from an actual survey made under my supervision; that all horizontal closures had a minimum ratio of precision of 1:10,000 (Class A). Field work was performed from 01/08/2020 to 04/24/2020, and all coordinates are based on NAD83/2011. That this survey was performed to meet the requirements of 21NCAC 56.1600 as applicable.

This 24th day of April, 2020.
 Donald E. Thomas
 Professional Land Surveyor L-4706

MATCH LINE -YREV- STA 17 + 00.00
SEE SHEET 32

MATCH LINE -YB- STA 20 + 50.00
SEE SHEET 6

3K
 MDI MANAGEMENT INC
 DB 2362 PG 402
 DB 2362 PG 409
 DB 2362 PG 413
 DB 3009 PG 1089
 DB 3009 PG 1092
 MB V PG 322
 MB 23 PG 323
 MB 78 PG 118
 MB 63 PG 38
 MB 77 PG 42
 MB 94 PG 82

3J
 MDI MANAGEMENT INC
 DB 2362 PG 402
 DB 2362 PG 409
 DB 2362 PG 413
 DB 3009 PG 1089
 DB 3009 PG 1092
 MB V PG 322
 MB 23 PG 323
 MB 78 PG 118
 MB 63 PG 38
 MB 77 PG 42
 MB 94 PG 82

3I
 MDI MANAGEMENT INC
 DB 2362 PG 402
 DB 2362 PG 409
 DB 2362 PG 413
 DB 3009 PG 1089
 DB 3009 PG 1092
 MB V PG 322
 MB 23 PG 323
 MB 78 PG 118
 MB 63 PG 38
 MB 77 PG 42
 MB 94 PG 82

3H
 MDI MANAGEMENT INC
 DB 2362 PG 402
 DB 2362 PG 409
 DB 2362 PG 413
 DB 3009 PG 1089
 DB 3009 PG 1092
 MB V PG 322
 MB 23 PG 323
 MB 78 PG 118
 MB 63 PG 38
 MB 77 PG 42
 MB 94 PG 82

44
 ATLANTIC TELEPHONE MEMBERSHIP CORP.
 DB 723 PG 370
 MB 5 PG 267

BEGIN CONSTRUCTION
 -YD- Sta. 10+25.00
 -YD- POT Sta. 10+00.00

NOTES:

1. IF FURTHER INFORMATION REGARDING PROJECT CONTROL IS NEEDED PLEASE CONTACT THE LOCATION AND SURVEYS UNIT.
2. PROJECT CONTROL WAS ESTABLISHED USING GNSS, THE GLOBAL NAVIGATION SATELLITE SYSTEM.
3. RIGHT OF WAY MONUMENTATION ESTABLISHED _____ TO _____.