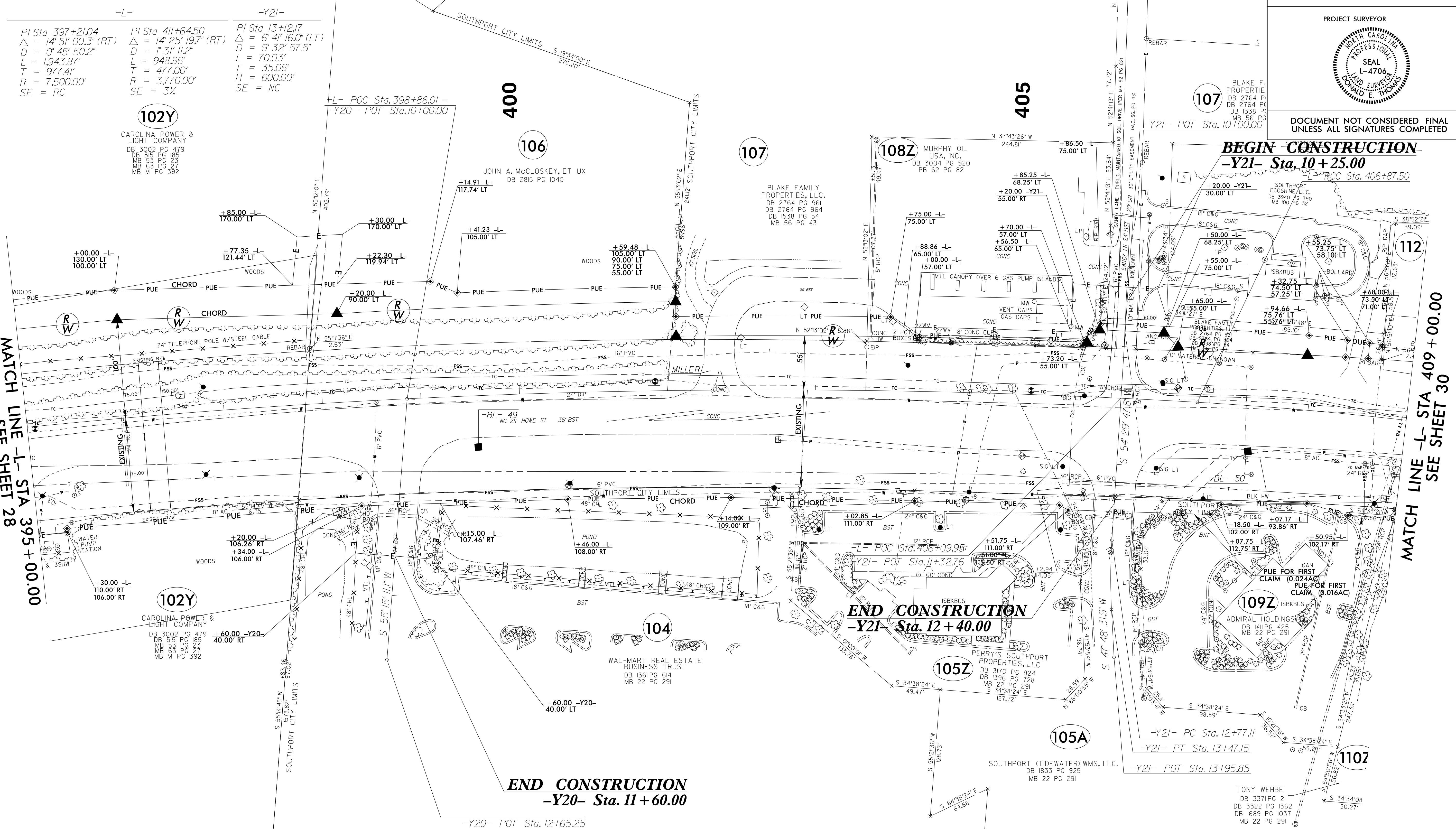


6/22/19

REVISIONS

PROJECT TIME
DRAWN BY
CHECKED BY
USER NAME



-L-	-Y21-	-Y21-
PI Sta 397+21.04	PI Sta 411+64.50	PI Sta 13+12.17
$\Delta = 14' 51'' 00.3''$ (RT)	$\Delta = 14' 25'' 19.7''$ (RT)	$\Delta = 6' 41'' 16.0''$ (LT)
$D = 0' 45'' 50.2''$	$D = 1' 31'' 11.2''$	$D = 9' 32'' 57.5''$
$L = 1,943.87'$	$L = 948.96'$	$L = 70.03'$
$T = 977.41'$	$T = 477.00'$	$T = 35.06'$
$R = 7,500.00'$	$R = 3,770.00'$	$R = 600.00'$
$SE = RC$	$SE = 3\%$	$SE = NC$

102Y
 CAROLINA POWER & LIGHT COMPANY
 DB 3002 PG 479
 DB 515 PG 185
 MB 23 PG 53
 MB 63 PG 27
 MB M PG 352

102Y
 CAROLINA POWER & LIGHT COMPANY
 DB 3002 PG 479
 DB 515 PG 185
 MB 23 PG 53
 MB 63 PG 27
 MB M PG 352

PROJECT REFERENCE NO. R-5021	SHEET NO. RW29
Location and Surveys	
ESP ASSOCIATES, INC. 211 RACINE DRIVE, SUITE 101 WILMINGTON, NC 28403	
PROJECT SURVEYOR	
DOCUMENT NOT CONSIDERED FINAL UNLESS ALL SIGNATURES COMPLETED	

NAD 83/NSRS 2007

I, Donald E. Thomas, certify that the right of way and permanent easement monumentation for this project shown herein was completed under my direct and responsible charge from an actual survey made under my supervision; that all horizontal closures had a minimum ratio of precision of 1:10,000 (Class A). Field work was performed from 01/08/2020 to 04/24/2020, and all coordinates are based on NAD83/2011; That this survey was performed to meet the requirements of 21NCAC 56.1600 as applicable.
 This 24th day of April, 2020.
Donald E. Thomas
 Professional Land Surveyor L-4706

- NOTES:**
1. IF FURTHER INFORMATION REGARDING PROJECT CONTROL IS NEEDED PLEASE CONTACT THE LOCATION AND SURVEYS UNIT.
 2. PROJECT CONTROL WAS ESTABLISHED USING GNSS, THE GLOBAL NAVIGATION SATELLITE SYSTEM.
 3. RIGHT OF WAY MONUMENTATION ESTABLISHED _____ TO _____.