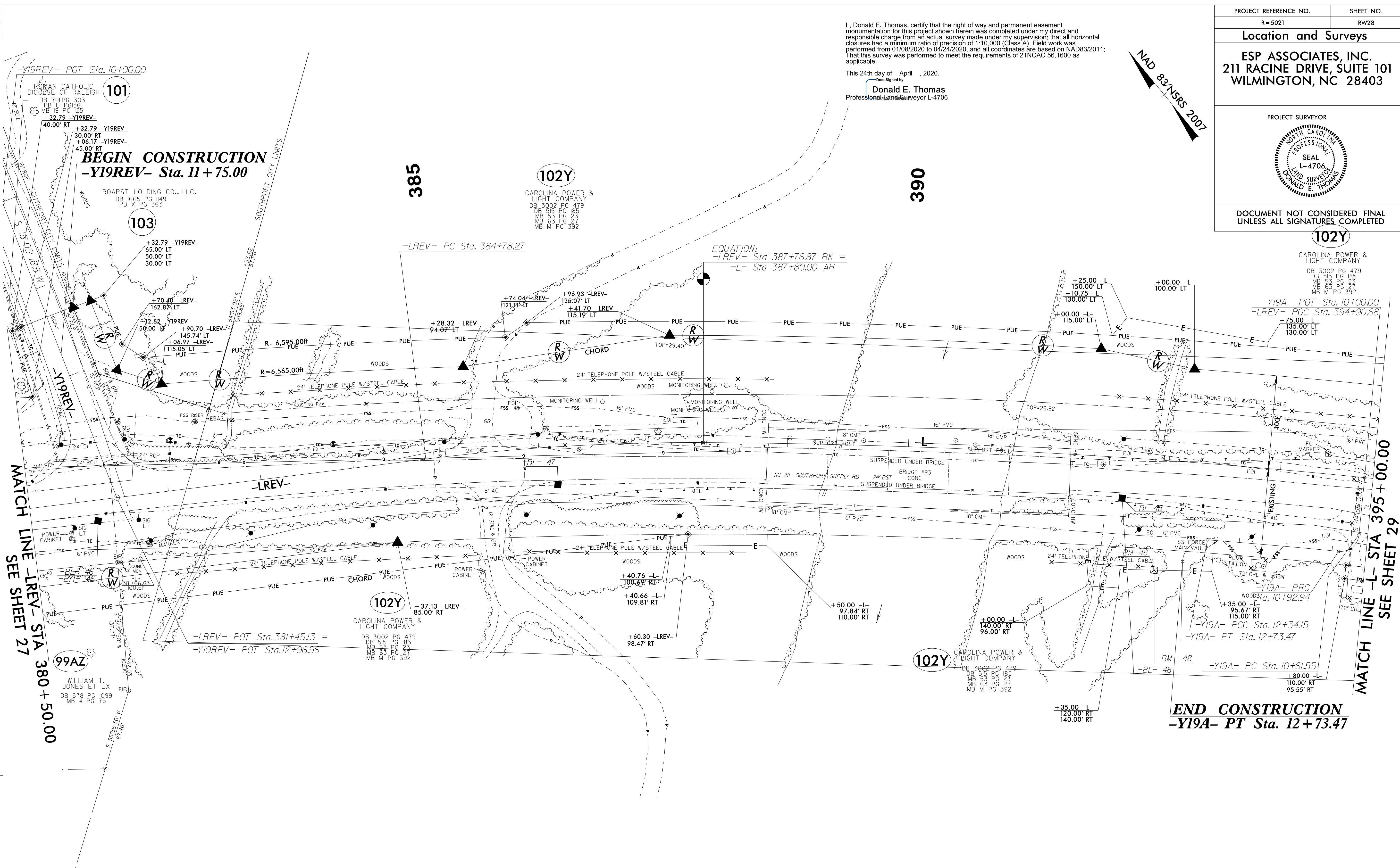


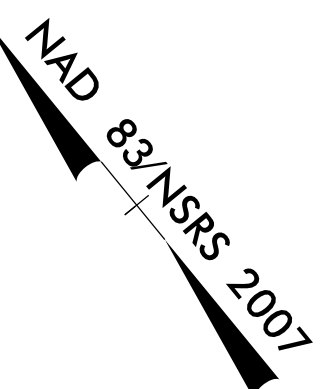
6/2/09

REVISIONS



I, Donald E. Thomas, certify that the right of way and permanent easement monumentation for this project shown herein was completed under my direct and responsible charge from an actual survey made under my supervision; that all horizontal closures had a minimum ratio of precision of 1:10,000 (Class A). Field work was performed from 01/08/2020 to 04/24/2020, and all coordinates are based on NAD83/2011; That this survey was performed to meet the requirements of 21NCAC 56.1600 as applicable.

This 24th day of April, 2020.  
 Documented by:  
**Donald E. Thomas**  
 Professional Land Surveyor L-4706

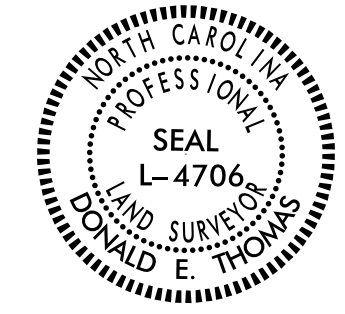


PROJECT REFERENCE NO.	SHEET NO.
R-5021	RW28

**Location and Surveys**

**ESP ASSOCIATES, INC.**  
 211 RACINE DRIVE, SUITE 101  
 WILMINGTON, NC 28403

PROJECT SURVEYOR



DOCUMENT NOT CONSIDERED FINAL  
 UNLESS ALL SIGNATURES COMPLETED

MATCH LINE -L- STA 380+50.00  
 SEE SHEET 27

MATCH LINE -L- STA 395+00.00  
 SEE SHEET 29

**NOTES:**

1. IF FURTHER INFORMATION REGARDING PROJECT CONTROL IS NEEDED PLEASE CONTACT THE LOCATION AND SURVEYS UNIT.
2. PROJECT CONTROL WAS ESTABLISHED USING GNSS, THE GLOBAL NAVIGATION SATELLITE SYSTEM.
3. RIGHT OF WAY MONUMENTATION ESTABLISHED \_\_\_\_ TO \_\_\_\_.

\$\$\$SYTIME\$\$\$  
 \$\$\$EDITION\$\$\$  
 \$\$\$\$\$\$