

NOTES:

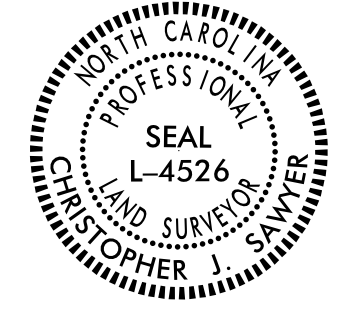
- IF FURTHER INFORMATION REGARDING PROJECT CONTROL IS NEEDED PLEASE CONTACT THE LOCATION AND SURVEYS UNIT.
- PROJECT CONTROL WAS ESTABLISHED USING GNSS, THE GLOBAL NAVIGATION SATELLITE SYSTEM.
- RIGHT OF WAY MONUMENTATION ESTABLISHED ____ TO ____.

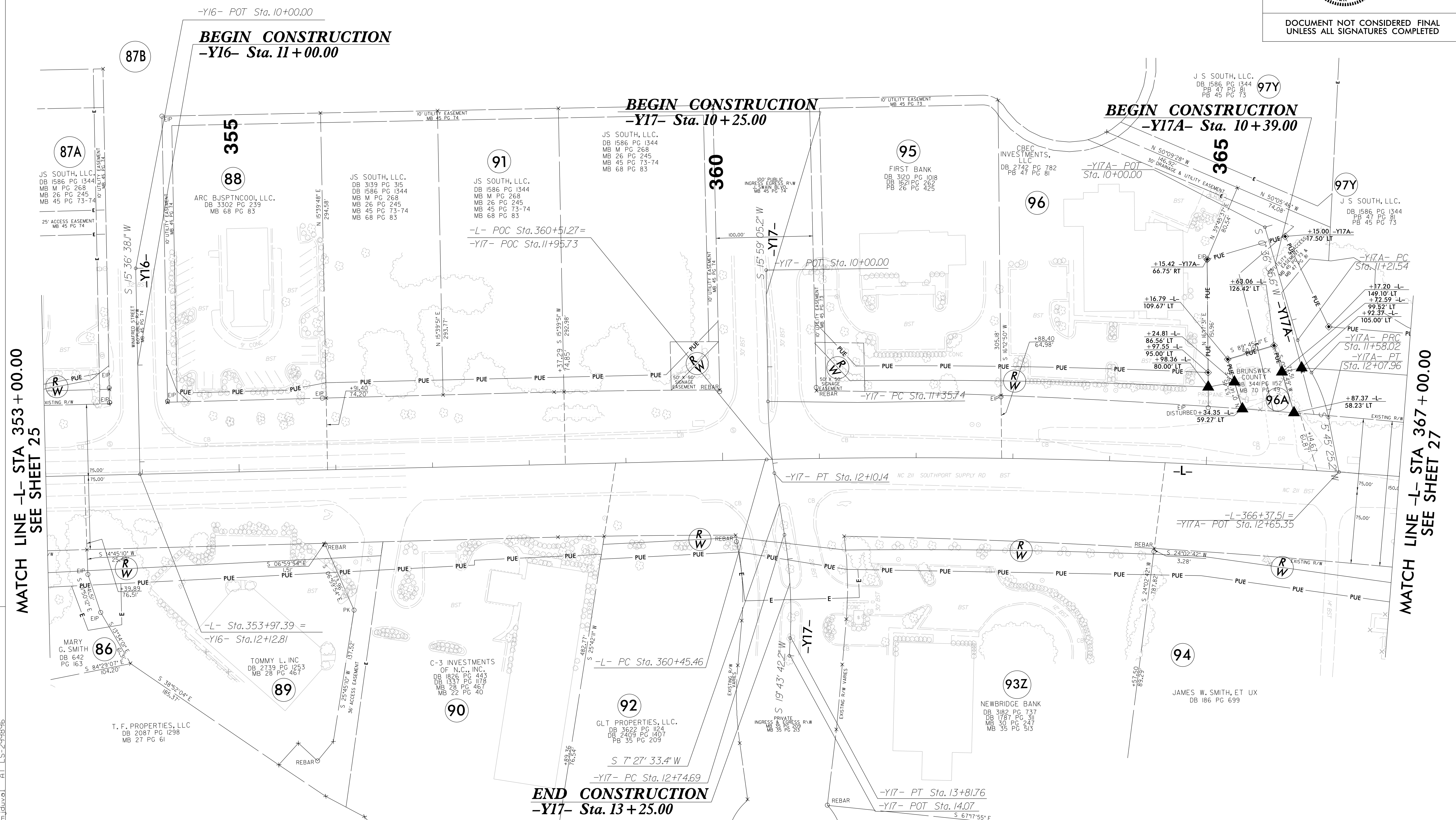
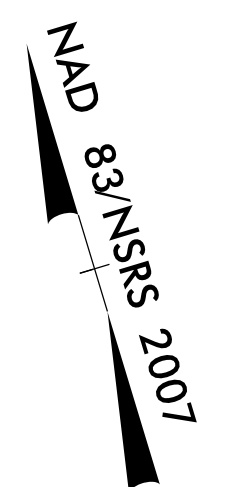
-Y17A-		-Y17-		-L-	
PI Sta 11+39.87	PI Sta 11+83.22	PI Sta 11+73.00	PI Sta 13+28.43	PI Sta 374+14.38	
$\Delta = 13^{\circ} 55' 52.7''$ (LT)	$\Delta = 19^{\circ} 04' 42.3''$ (RT)	$\Delta = 8^{\circ} 31' 31.8''$ (LT)	$\Delta = 12^{\circ} 16' 08.9''$ (RT)	$\Delta = 23^{\circ} 51' 25.5''$ (RT)	
D = 38' 11" 49.9"	D = 38' 11" 49.9"	D = 11' 27" 33.0"	D = 11' 27" 33.0"	D = 0' 53" 03.1"	
L = 36.47'	L = 49.95'	L = 74.40'	L = 107.07'	L = 2,698.17'	
T = 18.33'	T = 25.21'	T = 37.27'	T = 53.74'	T = 1,368.92'	
R = 150.00'	R = 150.00'	R = 500.00'	R = 500.00'	R = 6,480.00'	
SE = SEE PLANS	SE = SEE PLANS	SE = SEE PLANS	SE = SEE PLANS	SE = RC	

I, Christopher J. Sawyer, certify that the right of way and permanent easement monumentation for this project shown herein was completed under my direct and responsible charge from an actual survey made under my supervision; that all horizontal closures had a minimum ratio of precision of 1:10,000 (Class A). Field work was performed from August 2021 to September 2021, and all coordinates are based on NAD83/NSRS 2007; That this survey was performed to meet the requirements of 21NCAC 56.1600 as applicable.

This 2nd day of November, 2021.

DocuSigned by:
 Christopher J Sawyer
 Professional Land Surveyor L-4526

PROJECT REFERENCE NO. R-5021	SHEET NO. RW26-REV
Location and Surveys	
LOCATIONS AND SURVEYS DIVISION 3 5310 BARBADOS BLVD, #102 CASTLE HAYNE, NC 28429 (910)341-2280	
PROJECT SURVEYOR	
	
DOCUMENT NOT CONSIDERED FINAL UNLESS ALL SIGNATURES COMPLETED	



REVISIONS

C:\NOV-2021\5021\Projects\RI\AL_Brunswick Co\5021\Working\RW Sheets\211022 revised r.w sheets\R-5021\LS_RW26-REV.dgn
 6/2/2021 10:53 AM
 m.jduvala