

Location and Surveys

LOCATION AND SURVEYS  
DIVISION 3  
5310 BARBADOS BLVD., SUITE 102  
CASTLE HAYNE, NC 28429

PROJECT SURVEYOR



DOCUMENT NOT CONSIDERED FINAL UNLESS ALL SIGNATURES COMPLETED

I, Christopher J. Sawyer, certify that the right of way and permanent easement monumentation for this project shown herein was completed under my direct and responsible charge from an actual survey made under my supervision; that all horizontal closures had a minimum ratio of precision of 1:10,000 (Class A). Field work was performed from August 2021 to September 2021, and all coordinates are based on NAD83/NSRS 2007; That this survey was performed to meet the requirements of 21NCAC 56.1600 as applicable.

This 2nd day of November, 2021.

DocuSigned by:  
Christopher J. Sawyer  
9700082E1D21487  
Professional Land Surveyor L-4526

-Y9A-  
PI Sta 10+81.45    PI Sta 11+21.57  
Δ = 12° 49' 01.6" (LT)    Δ = 12° 43' 28.9" (RT)  
D = 31' 49" 51.6"    D = 31' 49" 51.6"  
L = 40.27'    L = 39.98'  
T = 20.22'    T = 20.07'  
R = 180.00'    R = 180.00'  
SE = SEE PLANS    SE = SEE PLANS

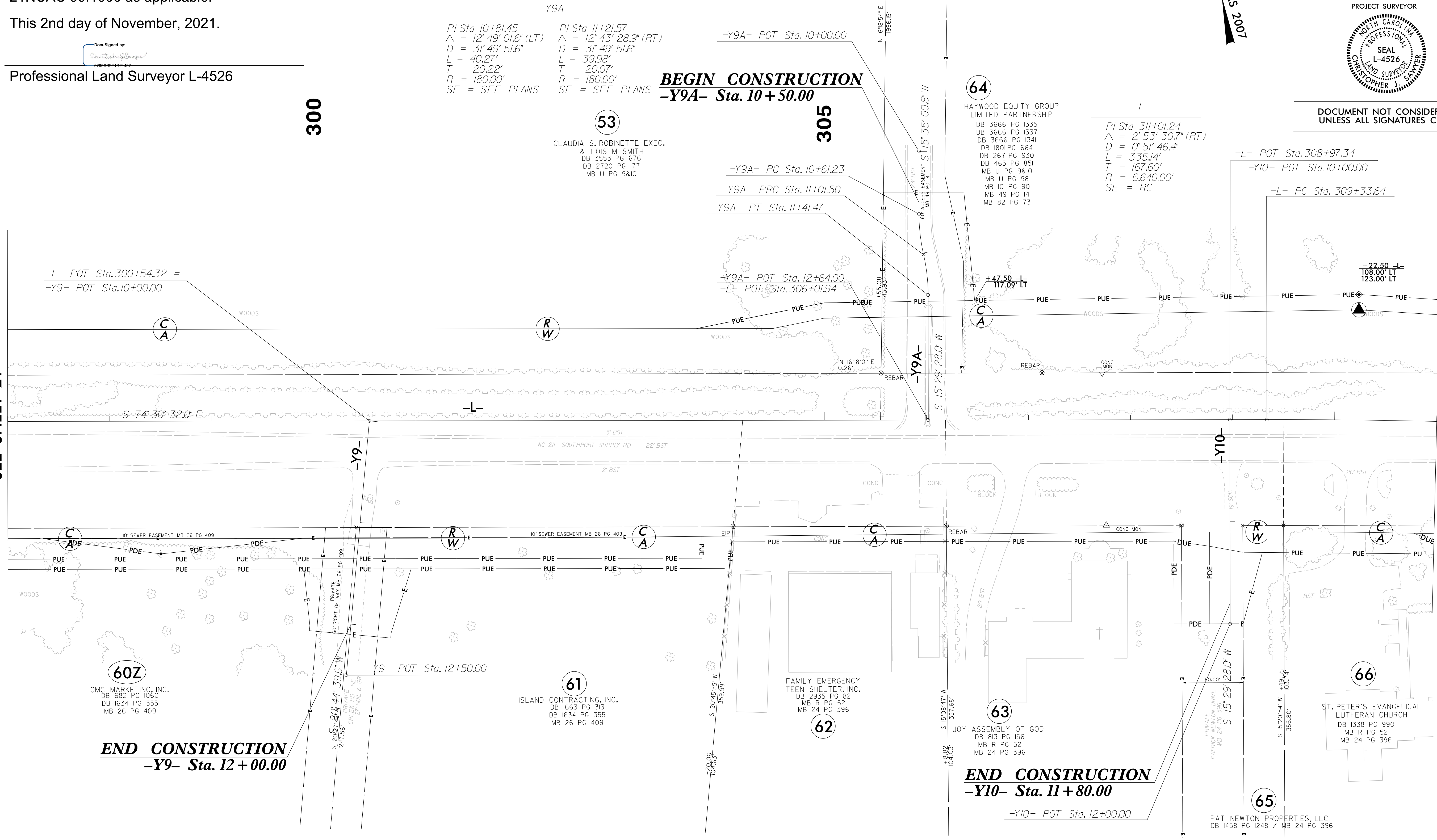
**BEGIN CONSTRUCTION**  
-Y9A- Sta. 10 + 50.00

-L-  
PI Sta 311+01.24  
Δ = 2° 53' 30.7" (RT)  
D = 0' 51" 46.4"  
L = 335.14'  
T = 167.60'  
R = 6,640.00'  
SE = RC

REVISIONS

MATCH LINE -L- STA 297 + 00.00  
SEE SHEET 21

MATCH LINE -L- STA 311 + 00.00  
SEE REVISED SHEET 23



60Z  
CMC MARKETING, INC.  
DB 682 PG 1060  
DB 1634 PG 355  
MB 26 PG 409

61  
ISLAND CONTRACTING, INC.  
DB 1663 PG 313  
DB 1634 PG 355  
MB 26 PG 409

62  
FAMILY EMERGENCY  
TEEN SHELTER, INC.  
DB 2935 PG 82  
MB R PG 52  
MB 24 PG 396

63  
JOY ASSEMBLY OF GOD  
DB 813 PG 156  
MB R PG 52  
MB 24 PG 396

**END CONSTRUCTION**  
-Y10- Sta. 11 + 80.00

65  
PAT NEWTON PROPERTIES, LLC.  
DB 1458 PG 1248 / MB 24 PG 396

66  
ST. PETER'S EVANGELICAL  
LUTHERAN CHURCH  
DB 1338 PG 990  
MB R PG 52  
MB 24 PG 396

NOTES:

1. IF FURTHER INFORMATION REGARDING PROJECT CONTROL IS NEEDED PLEASE CONTACT THE LOCATION AND SURVEYS UNIT.
2. PROJECT CONTROL WAS ESTABLISHED USING GNSS, THE GLOBAL NAVIGATION SATELLITE SYSTEM.
3. RIGHT OF WAY MONUMENTATION ESTABLISHED \_\_\_\_\_ TO \_\_\_\_\_.

C:\NOV-2021\541 Projects\RURAL\_Brunswick Co\F5021\Working\RW Sheets\_211022 revised.rw sheets\R-5021.LS.RW22\_REV#2.dgn  
 541 Projects\RURAL\_Brunswick Co\F5021\Working\RW Sheets\_211022 revised.rw sheets\R-5021.LS.RW22\_REV#2.dgn  
 m.judva