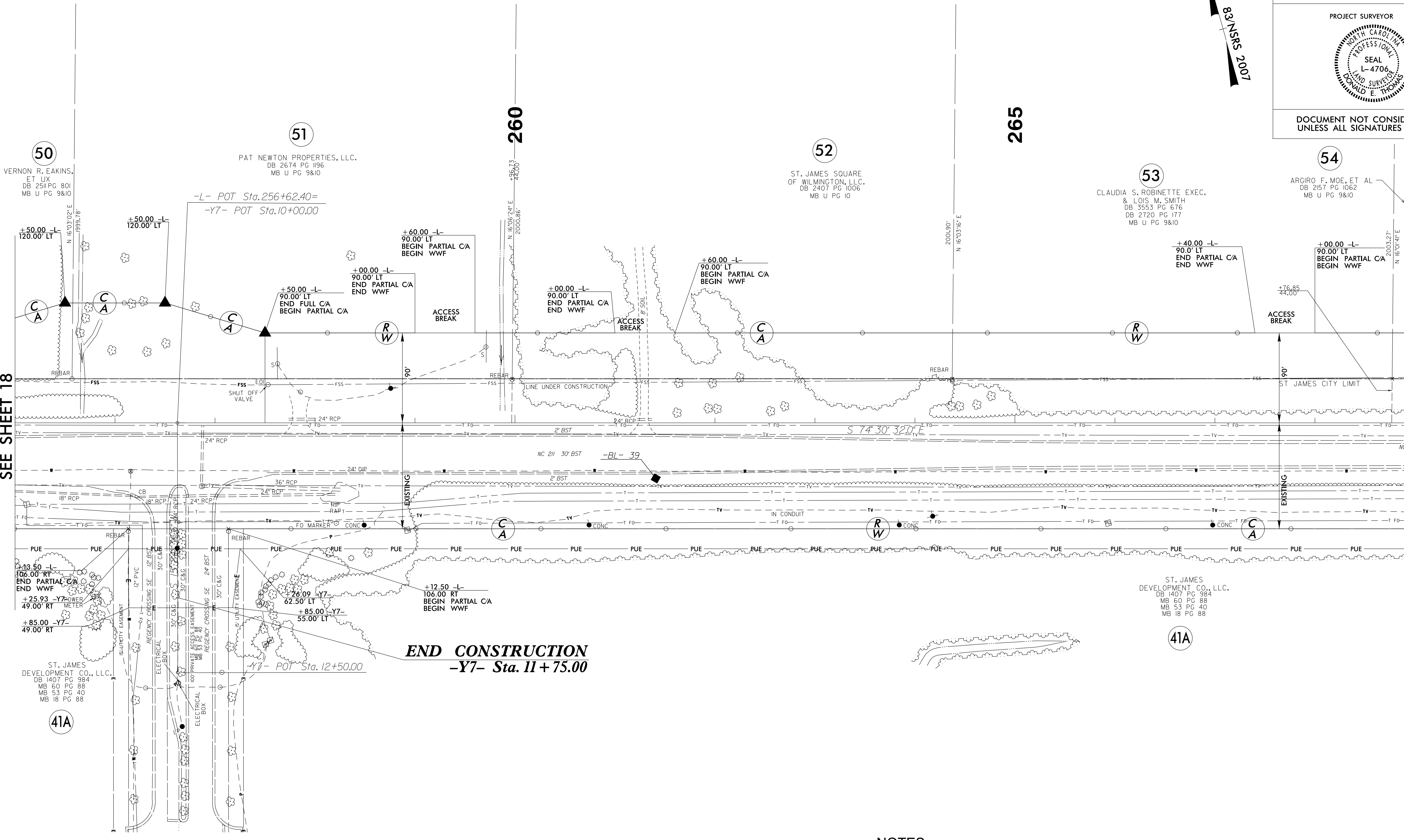


6/2/19

REVISIONS

MATCH LINE -L- STA 255+00.00  
SEE SHEET 18

MATCH LINE -L- STA 269+00.00  
SEE SHEET 20



50  
VERNON R. EAKINS,  
ET AL  
DB 2511 PG 801  
MB U PG 9&10

51  
PAT NEWTON PROPERTIES, LLC.  
DB 2674 PG 1196  
MB U PG 9&10

52  
ST. JAMES SQUARE  
OF WILMINGTON, LLC.  
DB 2407 PG 1006  
MB U PG 10

53  
CLAUDIA S. ROBINETTE EXEC.  
& LOIS M. SMITH  
DB 3553 PG 676  
DB 2720 PG 177  
MB U PG 9&10

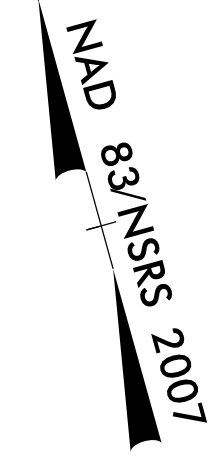
54  
ARGIRO F. MOE, ET AL  
DB 2157 PG 1062  
MB U PG 9&10

41A  
ST. JAMES  
DEVELOPMENT CO., LLC.  
DB 1407 PG 984  
MB 60 PG 88  
MB 53 PG 40  
MB 18 PG 88

41A  
ST. JAMES  
DEVELOPMENT CO., LLC.  
DB 1407 PG 984  
MB 60 PG 88  
MB 53 PG 40  
MB 18 PG 88

**END CONSTRUCTION**  
**-Y7- Sta. 11 + 75.00**

I, Donald E. Thomas, certify that the right of way and permanent easement  
monumentation for this project shown herein was completed under my direct and  
responsible charge from an actual survey made under my supervision; that all horizontal  
closures had a minimum ratio of precision of 1:10,000 (Class A). Field work was  
performed from 01/08/2020 to 04/24/2020, and all coordinates are based on NAD83/2011;  
That this survey was performed to meet the requirements of 21NCAC 56.1600 as  
applicable.  
This 24th day of April, 2020.  
Donald E. Thomas  
Professional Land Surveyor L-4706



PROJECT REFERENCE NO.	SHEET NO.
R-5021	RW19
<b>Location and Surveys</b>	
<b>ESP ASSOCIATES, INC.</b> 211 RACINE DRIVE, SUITE 101 WILMINGTON, NC 28403	
PROJECT SURVEYOR	
DOCUMENT NOT CONSIDERED FINAL UNLESS ALL SIGNATURES COMPLETED	

**NOTES:**

1. IF FURTHER INFORMATION REGARDING PROJECT CONTROL IS NEEDED PLEASE CONTACT THE LOCATION AND SURVEYS UNIT.
2. PROJECT CONTROL WAS ESTABLISHED USING GNSS, THE GLOBAL NAVIGATION SATELLITE SYSTEM.
3. RIGHT OF WAY MONUMENTATION ESTABLISHED \_\_\_\_ TO \_\_\_\_.

SYTIME  
CONDON  
SULLIVAN