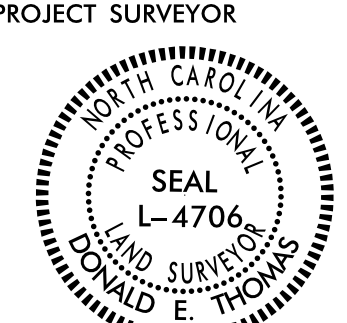


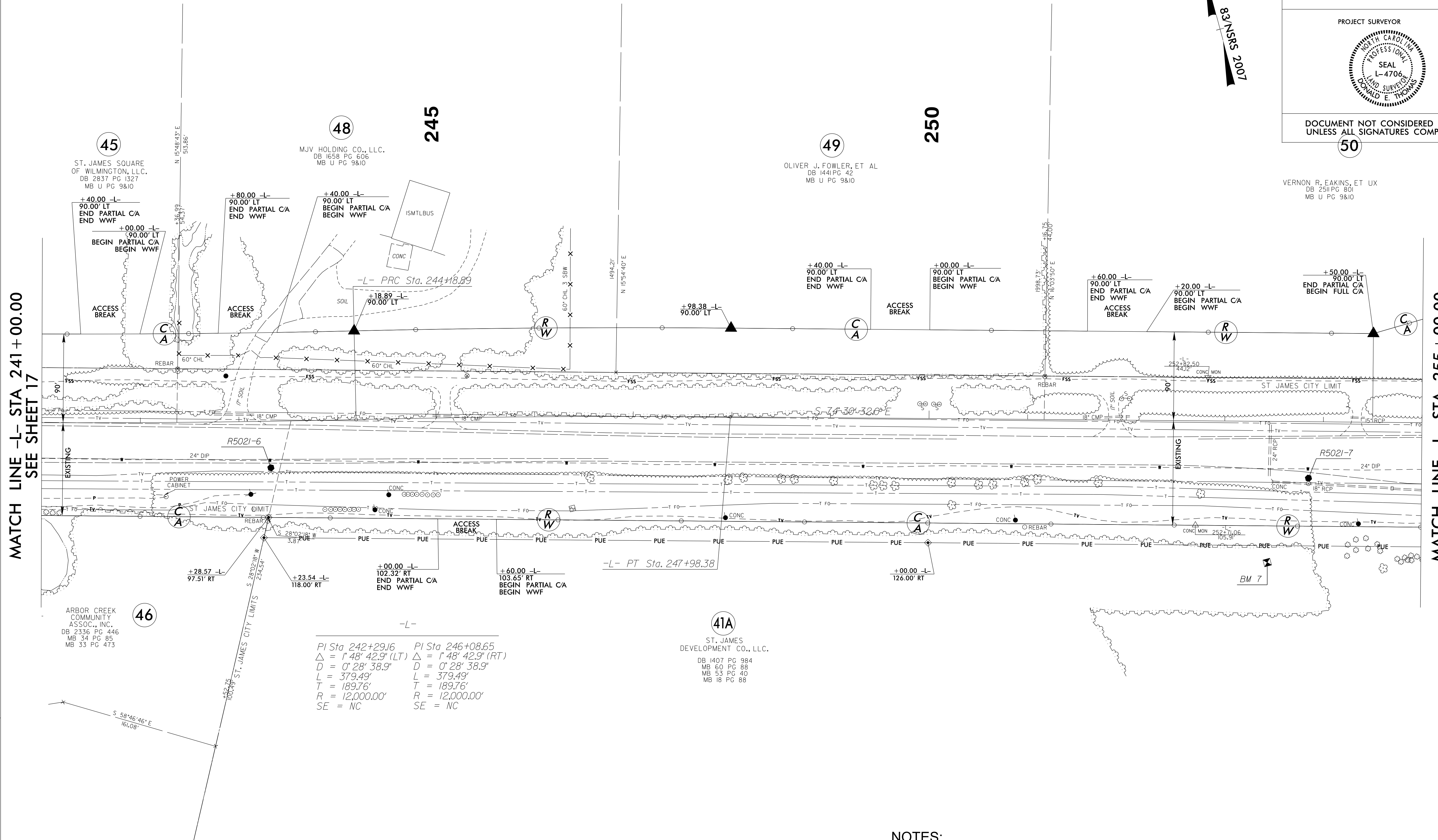
6/2/19

I, Donald E. Thomas, certify that the right of way and permanent easement monumentation for this project shown herein was completed under my direct and responsible charge from an actual survey made under my supervision; that all horizontal closures had a minimum ratio of precision of 1:10,000 (Class A). Field work was performed from 01/08/2020 to 04/24/2020, and all coordinates are based on NAD83/2011; That this survey was performed to meet the requirements of 21NCAC 56.1600 as applicable.

This 24th day of April, 2020.  
Designed by:  
Donald E. Thomas  
Professional Land Surveyor L-4706

PROJECT REFERENCE NO.	SHEET NO.
R-5021	RW18
<b>Location and Surveys</b>	
<b>ESP ASSOCIATES, INC.</b> 211 RACINE DRIVE, SUITE 101 WILMINGTON, NC 28403	
PROJECT SURVEYOR	
	
DOCUMENT NOT CONSIDERED FINAL UNLESS ALL SIGNATURES COMPLETED	
50	

VERNON R. EAKINS, ET UX  
DB 251 PG 801  
MB U PG 9810



MATCH LINE -L- STA 241 + 00.00  
SEE SHEET 17

MATCH LINE -L- STA 255 + 00.00  
SEE SHEET 19

45  
ST. JAMES SQUARE  
OF WILMINGTON, LLC.  
DB 2837 PG 1327  
MB U PG 9810

48  
MJV HOLDING CO., LLC.  
DB 1658 PG 606  
MB U PG 9810

49  
OLIVER J. FOWLER, ET AL  
DB 1441 PG 42  
MB U PG 9810

46  
ARBOR CREEK  
COMMUNITY  
ASSOC., INC.  
DB 2336 PG 446  
MB 34 PG 85  
MB 33 PG 473

-L-  
PI Sta 242+29.16    PI Sta 246+08.65  
 $\Delta = 1' 48' 42.9''$  (LT)     $\Delta = 1' 48' 42.9''$  (RT)  
 $D = 0' 28' 38.9''$      $D = 0' 28' 38.9''$   
 $L = 379.49'$      $L = 379.49'$   
 $T = 189.76'$      $T = 189.76'$   
 $R = 12,000.00'$      $R = 12,000.00'$   
 $SE = NC$      $SE = NC$

41A  
ST. JAMES  
DEVELOPMENT CO., LLC.  
DB 1407 PG 984  
MB 60 PG 88  
MB 53 PG 40  
MB 16 PG 88

NOTES:

1. IF FURTHER INFORMATION REGARDING PROJECT CONTROL IS NEEDED PLEASE CONTACT THE LOCATION AND SURVEYS UNIT.
2. PROJECT CONTROL WAS ESTABLISHED USING GNSS, THE GLOBAL NAVIGATION SATELLITE SYSTEM.
3. RIGHT OF WAY MONUMENTATION ESTABLISHED \_\_\_\_\_ TO \_\_\_\_\_.

REVISIONS

DATE  
BY  
DESCRIPTION