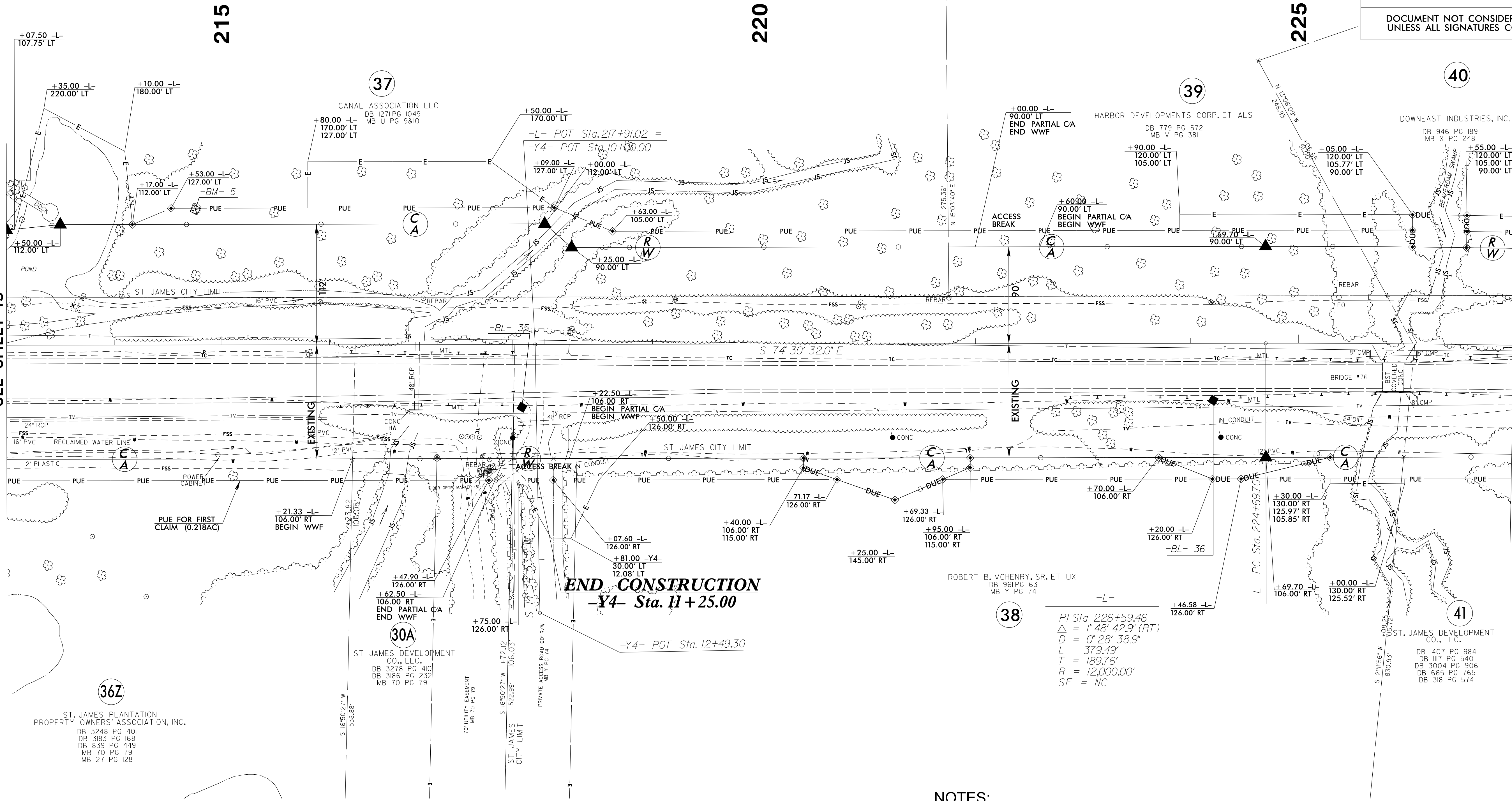


6/2/19

REVISIONS

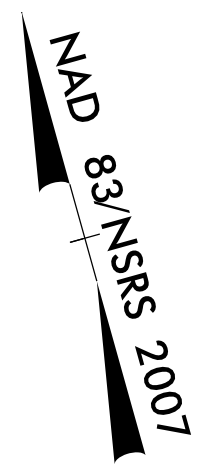
MATCH LINE -L- STA 213+00.00
SEE SHEET 15

MATCH LINE -L- STA 227+00.00
SEE SHEET 17



I, Donald E. Thomas, certify that the right of way and permanent easement monumentation for this project shown herein was completed under my direct and responsible charge from an actual survey made under my supervision; that all horizontal closures had a minimum ratio of precision of 1:10,000 (Class A). Field work was performed from 01/08/2020 to 04/24/2020, and all coordinates are based on NAD83/2011; that this survey was performed to meet the requirements of 21NCAC 56.1600 as applicable.

This 24th day of April, 2020.
 Donald E. Thomas
 Professional Land Surveyor L-4706



PROJECT REFERENCE NO.	SHEET NO.
R-5021	RW16
Location and Surveys	
ESP ASSOCIATES, INC. 211 RACINE DRIVE, SUITE 101 WILMINGTON, NC 28403	
PROJECT SURVEYOR	
DOCUMENT NOT CONSIDERED FINAL UNLESS ALL SIGNATURES COMPLETED	

END CONSTRUCTION
 -Y4- Sta. 11+25.00

ROBERT B. MCHENRY, SR. ET UX
 DB 961 PG 63
 MB Y PG 74

-L-
 PI Sta 226+59.46
 $\Delta = 1^{\circ} 48' 42.9''$ (RT)
 $D = 0^{\circ} 28' 38.9''$
 $L = 379.49'$
 $T = 189.76'$
 $R = 12,000.00'$
 $SE = NC$

36Z
 ST. JAMES PLANTATION
 PROPERTY OWNERS' ASSOCIATION, INC.
 DB 3248 PG 401
 DB 3183 PG 168
 DB 839 PG 449
 MB 70 PG 79
 MB 27 PG 128

30A
 ST. JAMES DEVELOPMENT
 CO., LLC.
 DB 3278 PG 410
 DB 3166 PG 232
 MB 70 PG 79

38

41

NOTES:

- IF FURTHER INFORMATION REGARDING PROJECT CONTROL IS NEEDED PLEASE CONTACT THE LOCATION AND SURVEYS UNIT.
- PROJECT CONTROL WAS ESTABLISHED USING GNSS, THE GLOBAL NAVIGATION SATELLITE SYSTEM.
- RIGHT OF WAY MONUMENTATION ESTABLISHED ____ TO ____.