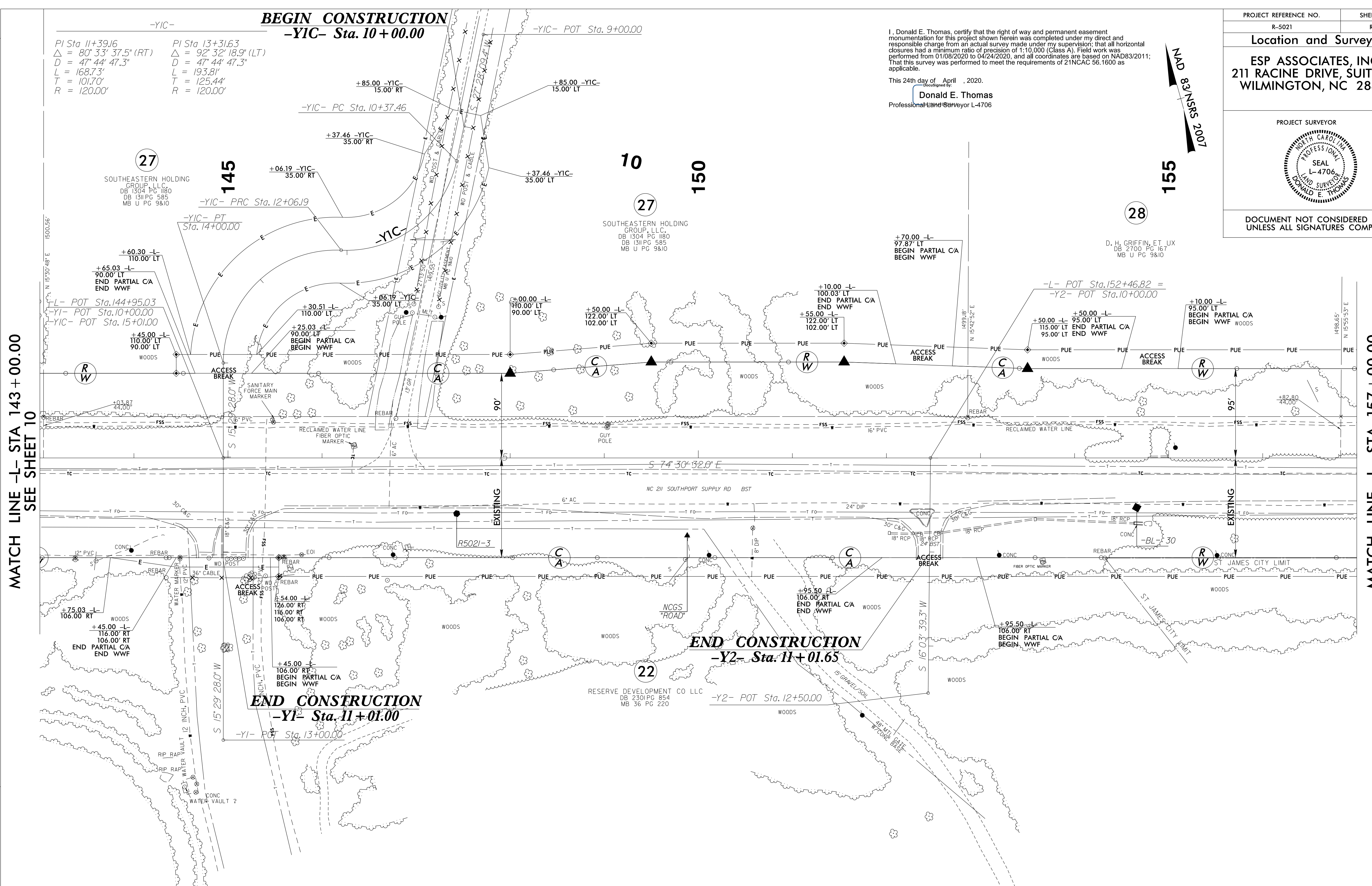


6/2/19

SYTIME
D:\PROJECTS\2019\190521\190521.dwg
S:\ADMIN\ADMIN



MATCH LINE -L- STA 143+00.00
SEE SHEET 10

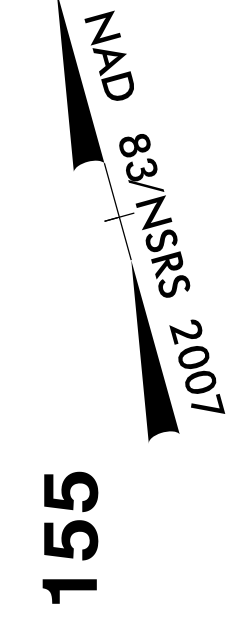
MATCH LINE -L- STA 157+00.00
SEE SHEET 12

$\Delta = 80^\circ 33' 37.5''$ (RT) $\Delta = 92^\circ 32' 18.9''$ (LT)
 $D = 47' 44'' 47.3''$ $D = 47' 44'' 47.3''$
 $L = 168.73'$ $L = 193.81'$
 $T = 101.70'$ $T = 125.44'$
 $R = 120.00'$ $R = 120.00'$

I, Donald E. Thomas, certify that the right of way and permanent easement monumentation for this project shown herein was completed under my direct and responsible charge from an actual survey made under my supervision; that all horizontal closures had a minimum ratio of precision of 1:10,000 (Class A). Field work was performed from 01/08/2020 to 04/24/2020, and all coordinates are based on NAD83/2011; That this survey was performed to meet the requirements of 21NCAC 56.1600 as applicable.

This 24th day of April, 2020.

Donald E. Thomas
Professional Land Surveyor L-4706



PROJECT REFERENCE NO.	SHEET NO.
R-5021	RW11
Location and Surveys	
ESP ASSOCIATES, INC. 211 RACINE DRIVE, SUITE 101 WILMINGTON, NC 28403	

PROJECT SURVEYOR

DOCUMENT NOT CONSIDERED FINAL
UNLESS ALL SIGNATURES COMPLETED

NOTES:

1. IF FURTHER INFORMATION REGARDING PROJECT CONTROL IS NEEDED PLEASE CONTACT THE LOCATION AND SURVEYS UNIT.
2. PROJECT CONTROL WAS ESTABLISHED USING GNSS, THE GLOBAL NAVIGATION SATELLITE SYSTEM.
3. RIGHT OF WAY MONUMENTATION ESTABLISHED ____ TO ____.