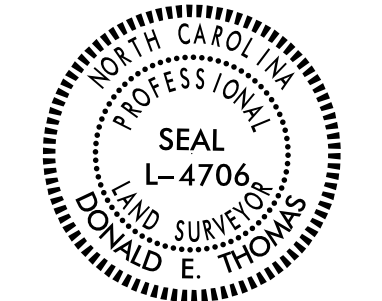


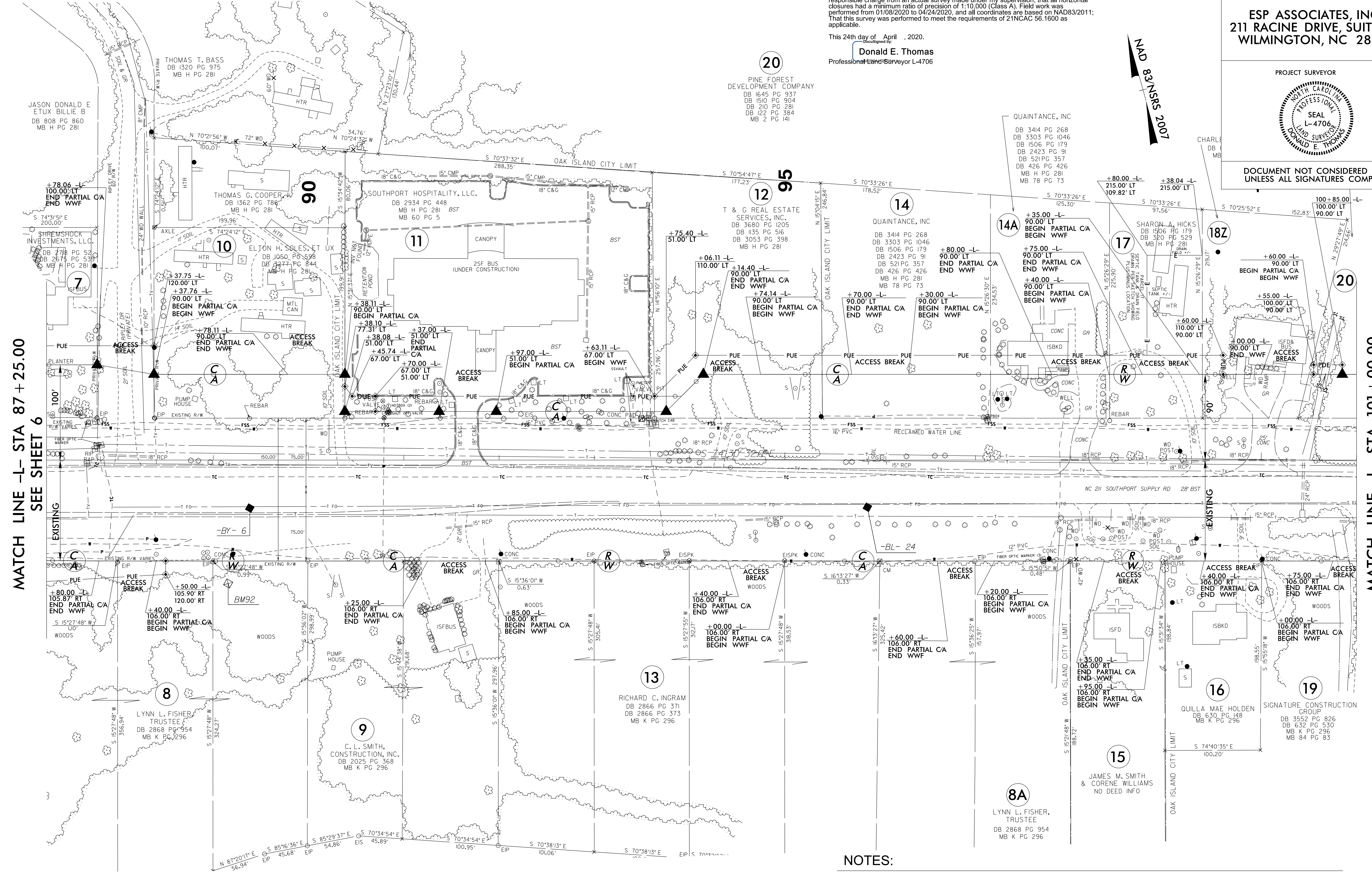
6/2/19

PROJECT REFERENCE NO.	SHEET NO.
R-5021	RW07
<b>Location and Surveys</b>	
<b>ESP ASSOCIATES, INC.</b> 211 RACINE DRIVE, SUITE 101 WILMINGTON, NC 28403	
PROJECT SURVEYOR	
	
DOCUMENT NOT CONSIDERED FINAL UNLESS ALL SIGNATURES COMPLETED	

I, Donald E. Thomas, certify that the right of way and permanent easement monumentation for this project shown herein was completed under my direct and responsible charge from an actual survey made under my supervision; that all horizontal closures had a minimum ratio of precision of 1:10,000 (Class A). Field work was performed from 01/08/2020 to 04/24/2020, and all coordinates are based on NAD83/2011; That this survey was performed to meet the requirements of 21NCAC 56.1600 as applicable.

This 24th day of April, 2020.  
 Donald E. Thomas  
 Professional Land Surveyor L-4706

NAD 83 GNSS 2007



MATCH LINE -L- STA 87 + 25.00  
SEE SHEET 6

MATCH LINE -L- STA 101 + 00.00  
SEE SHEET 8

REVISIONS

**NOTES:**

1. IF FURTHER INFORMATION REGARDING PROJECT CONTROL IS NEEDED PLEASE CONTACT THE LOCATION AND SURVEYS UNIT.
2. PROJECT CONTROL WAS ESTABLISHED USING GNSS, THE GLOBAL NAVIGATION SATELLITE SYSTEM.
3. RIGHT OF WAY MONUMENTATION ESTABLISHED \_\_\_\_ TO \_\_\_\_.

SYSTEM: 11.000  
 DATE: 06/02/19  
 USER: DONALD.E.THOMAS  
 PROJECT: R-5021