

SURVEY CONTROL SHEET

W/ EXISTING CENTERLINE ALIGNMENTS PRIOR TO CONSTRUCTION

I, CHRISTOPHER J. SAWYER, PLS, certify that the Project Control was [performed/verified] under my supervision from an actual GPS survey made under my supervision and the following information was used to perform the survey:

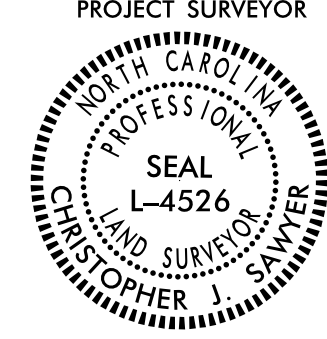
Class of survey: **AA**
 Type of GPS field procedure: NC-VRS-RTN
 Dates of survey: NOVEMBER 2009 TO SEPTEMBER 2021
 Datum/Epoch: NAD 83/NSRS 2007
 Published/Fixed-control use: [Project_Control_NA_for_RTN]
 Localized around: SOUTHPORT EAST BASE RESET 1981
 Northing: 74895.9850
 Easting: 2288816.3700
 Combined grid factor: 1.00012636797
 Geoid model: G09NC
 Units: US SURVEY FEET

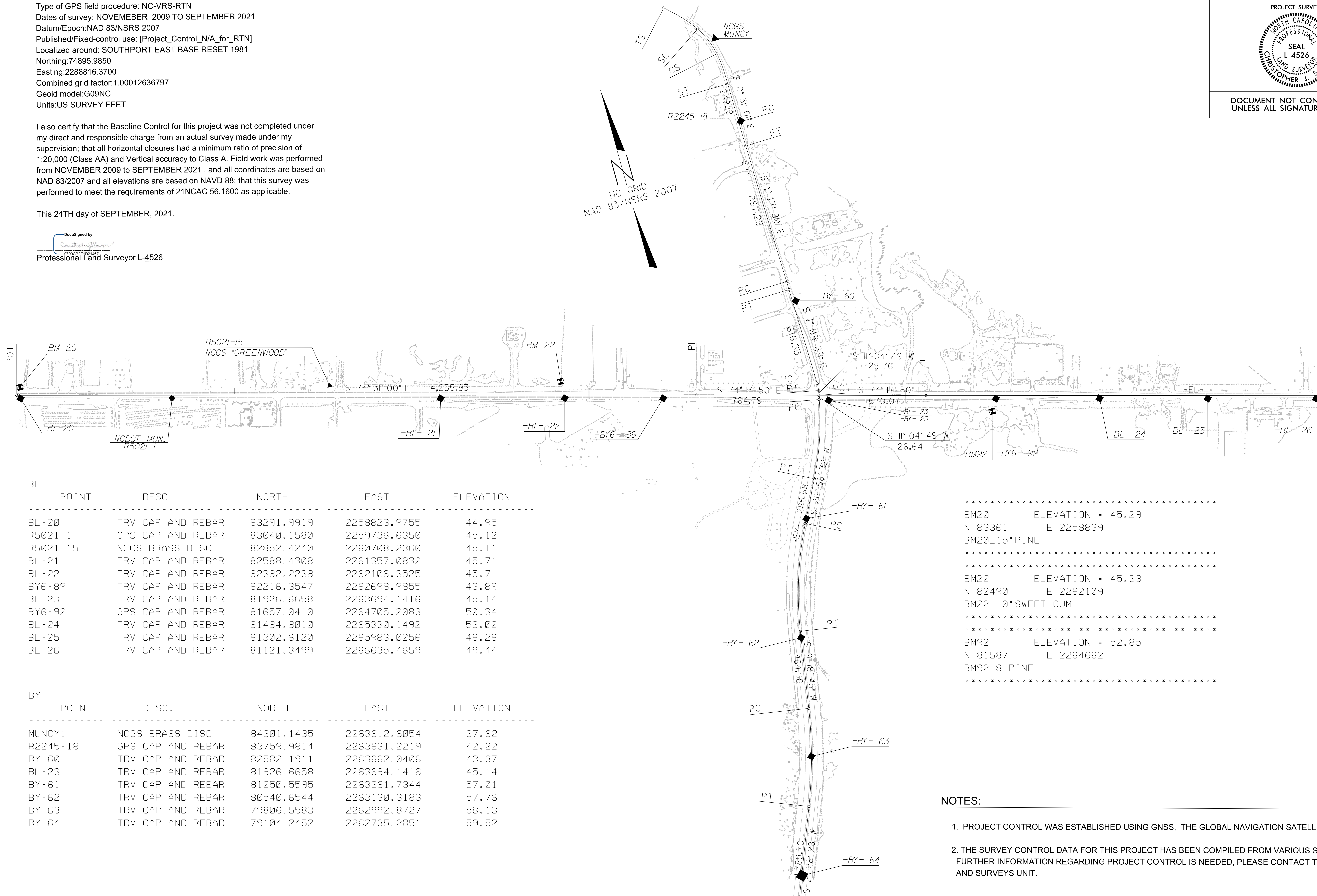
I also certify that the Baseline Control for this project was not completed under my direct and responsible charge from an actual survey made under my supervision; that all horizontal closures had a minimum ratio of precision of 1:20,000 (Class AA) and Vertical accuracy to Class A. Field work was performed from NOVEMBER 2009 to SEPTEMBER 2021, and all coordinates are based on NAD 83/2007 and all elevations are based on NAVD 88; that this survey was performed to meet the requirements of 21NCAC 56.1600 as applicable.

This 24TH day of SEPTEMBER, 2021.

DocuSigned by:

 Christopher J. Sawyer
 Professional Land Surveyor L-4526

PROJECT REFERENCE NO.	SHEET NO.
R-5021	RW02C-1
Location and Surveys	
LOCATION & SURVEYS DIVISION 3 5310 BARBADOS BLVD, #102 CASTLE HAYNE, NC 28429 (910) 341-2280	
PROJECT SURVEYOR	
	
DOCUMENT NOT CONSIDERED FINAL UNLESS ALL SIGNATURES COMPLETED	



BL	POINT	DESC.	NORTH	EAST	ELEVATION
	BL-20	TRV CAP AND REBAR	83291.9919	2258823.9755	44.95
	R5021-1	GPS CAP AND REBAR	83040.1580	2259736.6350	45.12
	R5021-15	NCGS BRASS DISC	82852.4240	2260708.2360	45.11
	BL-21	TRV CAP AND REBAR	82588.4308	2261357.0832	45.71
	BL-22	TRV CAP AND REBAR	82382.2238	2262106.3525	45.71
	BY6-89	TRV CAP AND REBAR	82216.3547	2262698.9855	43.89
	BL-23	TRV CAP AND REBAR	81926.6658	2263694.1416	45.14
	BY6-92	GPS CAP AND REBAR	81657.0410	2264705.2083	50.34
	BL-24	TRV CAP AND REBAR	81484.8010	2265330.1492	53.02
	BL-25	TRV CAP AND REBAR	81302.6120	2265983.0256	48.28
	BL-26	TRV CAP AND REBAR	81121.3499	2266635.4659	49.44

BY	POINT	DESC.	NORTH	EAST	ELEVATION
	MUNCY1	NCGS BRASS DISC	84301.1435	2263612.6054	37.62
	R2245-18	GPS CAP AND REBAR	83759.9814	2263631.2219	42.22
	BY-60	TRV CAP AND REBAR	82582.1911	2263662.0406	43.37
	BL-23	TRV CAP AND REBAR	81926.6658	2263694.1416	45.14
	BY-61	TRV CAP AND REBAR	81250.5595	2263361.7344	57.01
	BY-62	TRV CAP AND REBAR	80540.6544	2263130.3183	57.76
	BY-63	TRV CAP AND REBAR	79806.5583	2262992.8727	58.13
	BY-64	TRV CAP AND REBAR	79104.2452	2262735.2851	59.52

 BM20 ELEVATION = 45.29
 N 83361 E 2258839
 BM20-15*PINE

 BM22 ELEVATION = 45.33
 N 82490 E 2262109
 BM22-10*SWEET GUM

 BM92 ELEVATION = 52.85
 N 81587 E 2264662
 BM92-8*PINE

NOTES:

- PROJECT CONTROL WAS ESTABLISHED USING GNSS, THE GLOBAL NAVIGATION SATELLITE SYSTEM.
- THE SURVEY CONTROL DATA FOR THIS PROJECT HAS BEEN COMPILED FROM VARIOUS SOURCES. IF FURTHER INFORMATION REGARDING PROJECT CONTROL IS NEEDED, PLEASE CONTACT THE LOCATION AND SURVEYS UNIT.

REVISIONS

27-SEP-2021 11:48 S:\Units\033\Projects\RURAL\Brunswick Co\RW021\Working\RW Sheets\210907 revised rw sheets\REVISED 210924\RW021.LS.RW02C-1.dgn
 m.jduval At LS-258896

MATCHLINE
 SEE SHEET RW02C-2