

5/28/21

**HNTB** HNTB NORTH CAROLINA, P.C.  
 343 E. Six Forks Road, Suite 200  
 Raleigh, North Carolina 27609  
 NC License No: C-1554

PROJECT REFERENCE NO. <b>R-5021</b>	SHEET NO. <b>43</b>
ROADWAY DESIGN ENGINEER <i>[Signature]</i>	HYDRAULICS ENGINEER <i>[Signature]</i>

**DOCUMENT NOT CONSIDERED FINAL UNLESS ALL SIGNATURES COMPLETED**

**PIPE HYDRAULIC DATA**  
 -L- Sta. 106+64 (STR \*0804)

DRAINAGE AREA	= 23	AC
DESIGN FREQUENCY	= 50	YRS
DESIGN DISCHARGE	= 41	CFS
DESIGN HW ELEVATION	= 48.6	FT
100 YEAR DISCHARGE	= 47	CFS
100 YEAR HW ELEVATION	= 49.0	FT
OVERTOPPING FREQUENCY	= 500(+)	YRS
OVERTOPPING DISCHARGE	= 80(+)	CFS
OVERTOPPING ELEVATION	= 54.97	FT

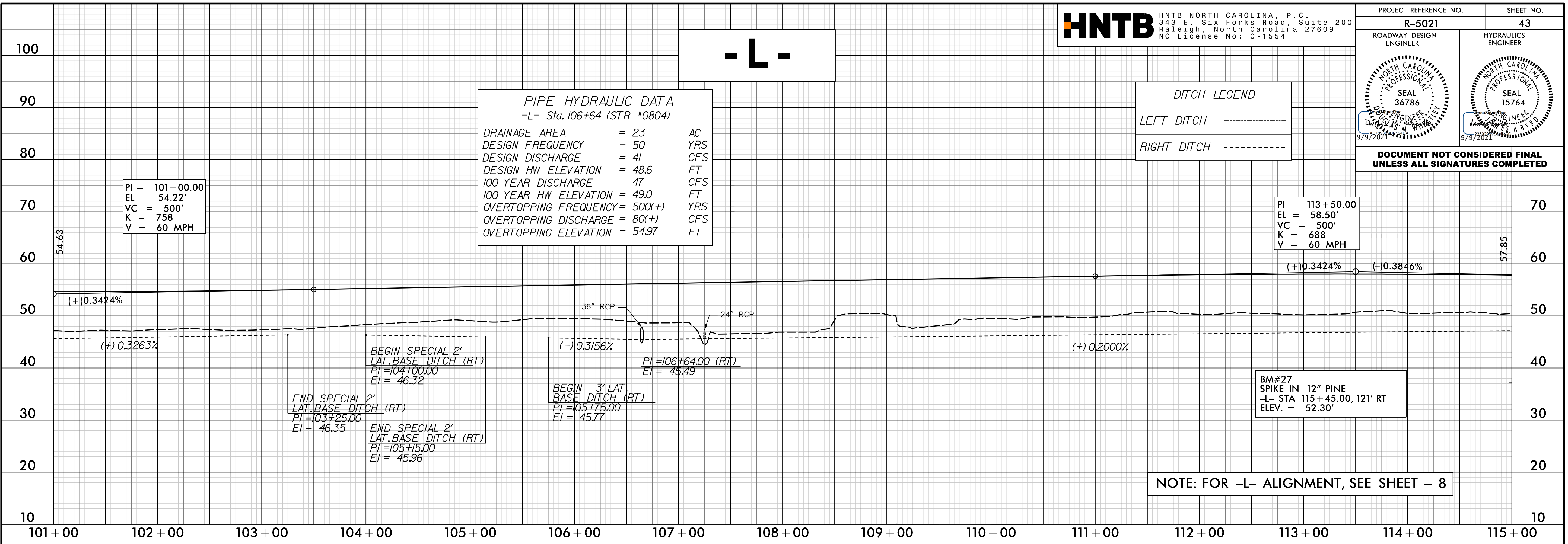
**DITCH LEGEND**

LEFT DITCH - - - - -

RIGHT DITCH - - - - -

PI = 101+00.00  
 EL = 54.22'  
 VC = 500'  
 K = 758  
 V = 60 MPH+

PI = 113+50.00  
 EL = 58.50'  
 VC = 500'  
 K = 688  
 V = 60 MPH+



BEGIN SPECIAL 2' LAT. BASE DITCH (RT)  
 PI=104+00.00  
 EI = 46.32

END SPECIAL 2' LAT. BASE DITCH (RT)  
 PI=103+25.00  
 EI = 46.35

END SPECIAL 2' LAT. BASE DITCH (RT)  
 PI=105+15.00  
 EI = 45.96

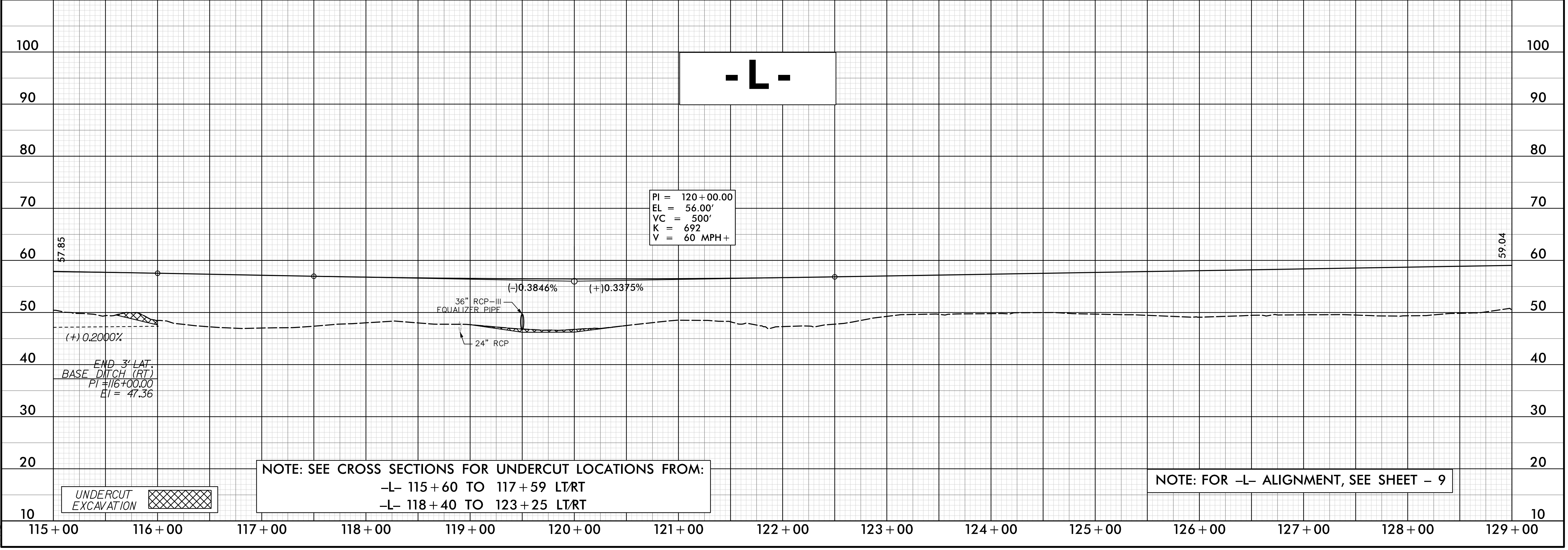
BEGIN 3' LAT. BASE DITCH (RT)  
 PI=105+75.00  
 EI = 45.77

BM#27  
 SPIKE IN 12" PINE  
 -L- STA 115+45.00, 121' RT  
 ELEV. = 52.30'

NOTE: FOR -L- ALIGNMENT, SEE SHEET - 8

22-JUL-2021 09:58  
 R:\Roadway\Projects\5021\RDY\_PFL\_PSH43.dgn

PI = 120+00.00  
 EL = 56.00'  
 VC = 500'  
 K = 692  
 V = 60 MPH+



NOTE: SEE CROSS SECTIONS FOR UNDERCUT LOCATIONS FROM:  
 -L- 115+60 TO 117+59 LTRT  
 -L- 118+40 TO 123+25 LTRT

NOTE: FOR -L- ALIGNMENT, SEE SHEET - 9