

5/28/2021

PROJECT REFERENCE NO. R-5021	SHEET NO. 42
ROADWAY DESIGN ENGINEER [Signature]	HYDRAULICS ENGINEER [Signature]

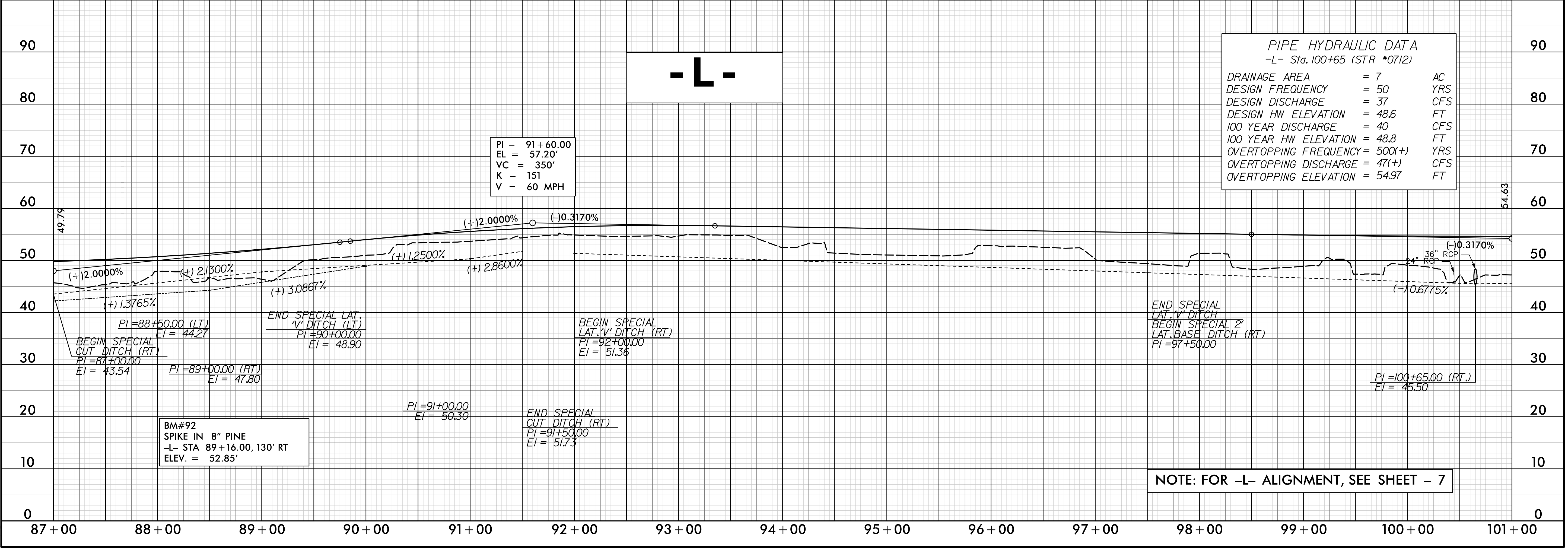
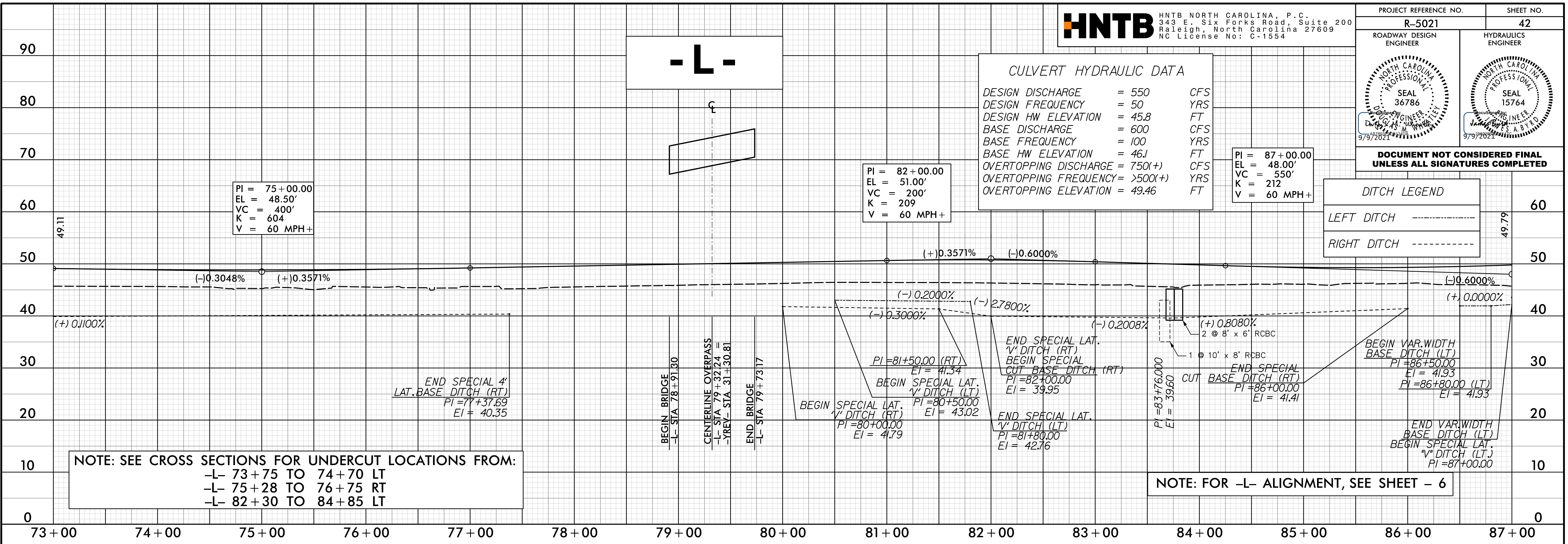
CULVERT HYDRAULIC DATA

DESIGN DISCHARGE	= 550	CFS
DESIGN FREQUENCY	= 50	YRS
DESIGN HW ELEVATION	= 45.8	FT
BASE DISCHARGE	= 600	CFS
BASE FREQUENCY	= 100	YRS
BASE HW ELEVATION	= 46.1	FT
OVERTOPPING DISCHARGE	= 750(+)	CFS
OVERTOPPING FREQUENCY	= >500(+)	YRS
OVERTOPPING ELEVATION	= 49.46	FT

PI = 87+00.00
 EL = 48.00'
 VC = 550'
 K = 212
 V = 60 MPH+

DITCH LEGEND

LEFT DITCH	-----
RIGHT DITCH	-----



22-JUL-2021 09:58
[Signature]