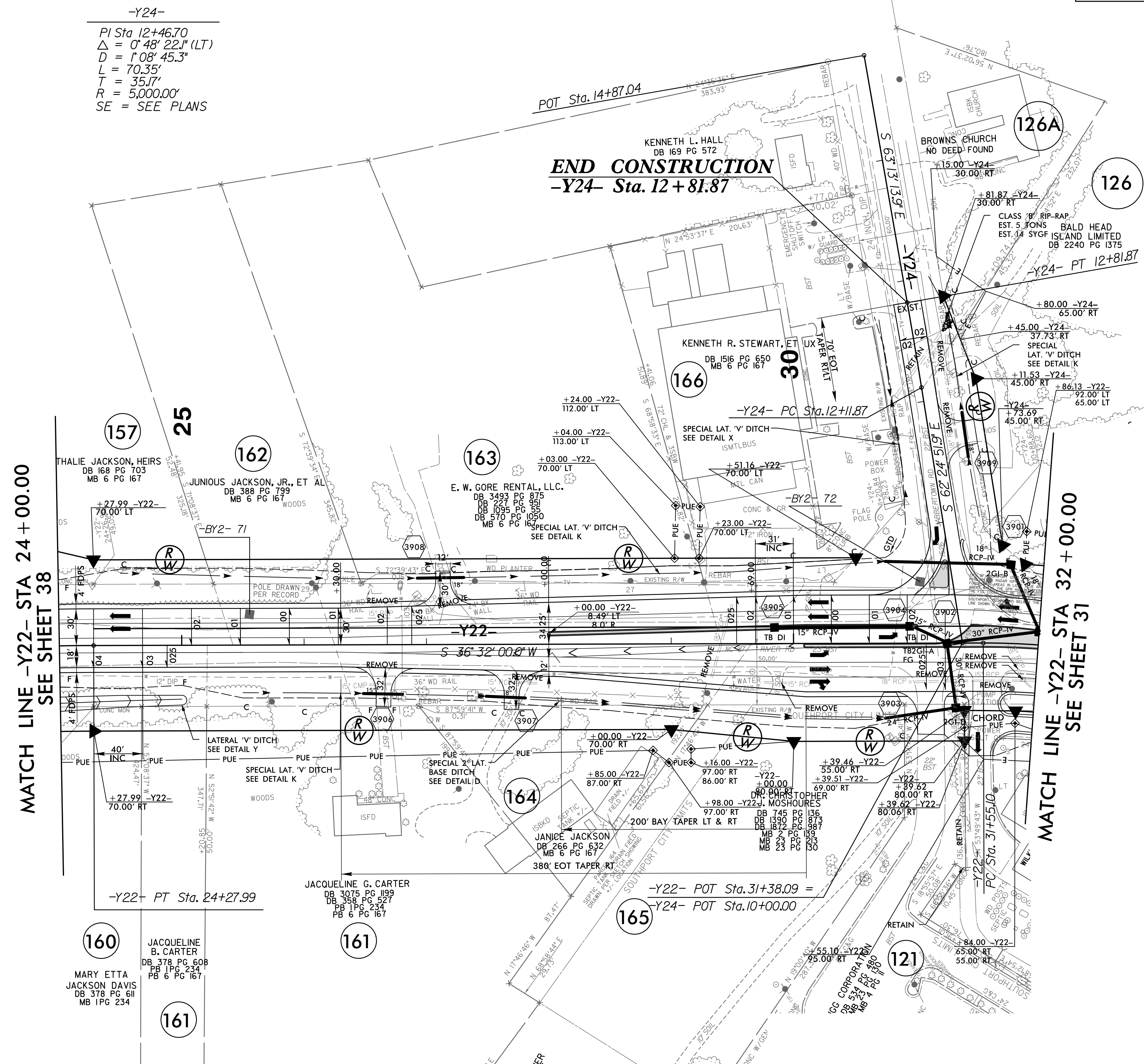
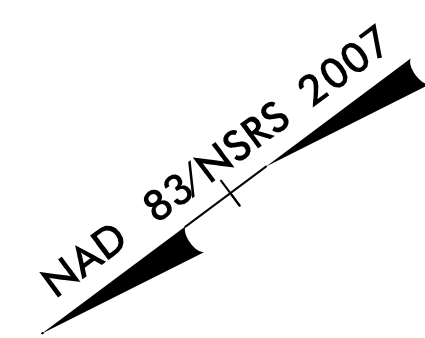


PROJECT REFERENCE NO.	SHEET NO.
R-5021	39
RW SHEET NO.	37
ROADWAY DESIGN ENGINEER	HYDRAULICS ENGINEER
<b>DOCUMENT NOT CONSIDERED FINAL UNLESS ALL SIGNATURES COMPLETED</b>	



-Y24-  
 PI Sta 12+46.70  
 $\Delta = 0' 48' 22.1''$  (LT)  
 $D = 1' 08' 45.3''$   
 $L = 70.35'$   
 $T = 35.17'$   
 $R = 5,000.00'$   
 SE = SEE PLANS

**NOTE:**

1. ALL DRIVEWAY RADII ARE 20' UNLESS NOTED ON PLANS.
2. PAVED TURNOUTS FOR SHOULDER SECTION SHOULD EXTEND 50' UNLESS NOTED ON PLANS.

FOR -Y22- PROFILE, SEE SHEETS 68 & 69  
 FOR -Y24- PROFILE, SEE SHEET 70  
 FOR DRAINAGE DETAILS, SEE SHEETS 2D-1 THRU 2D-3