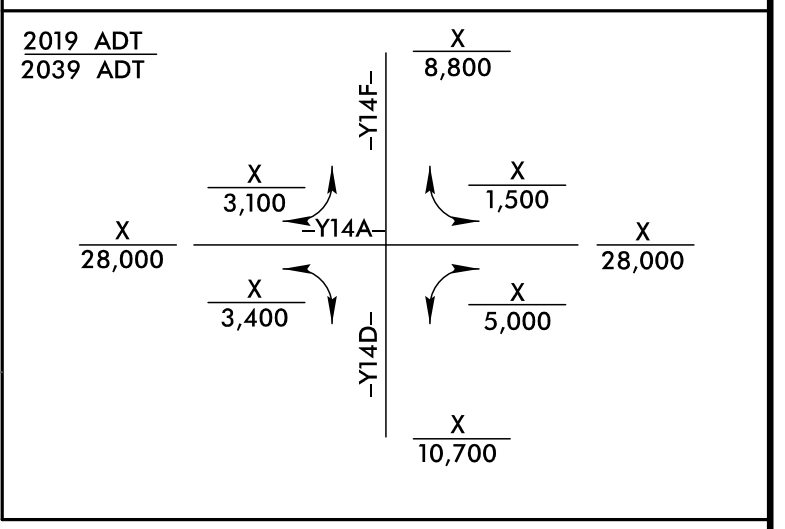


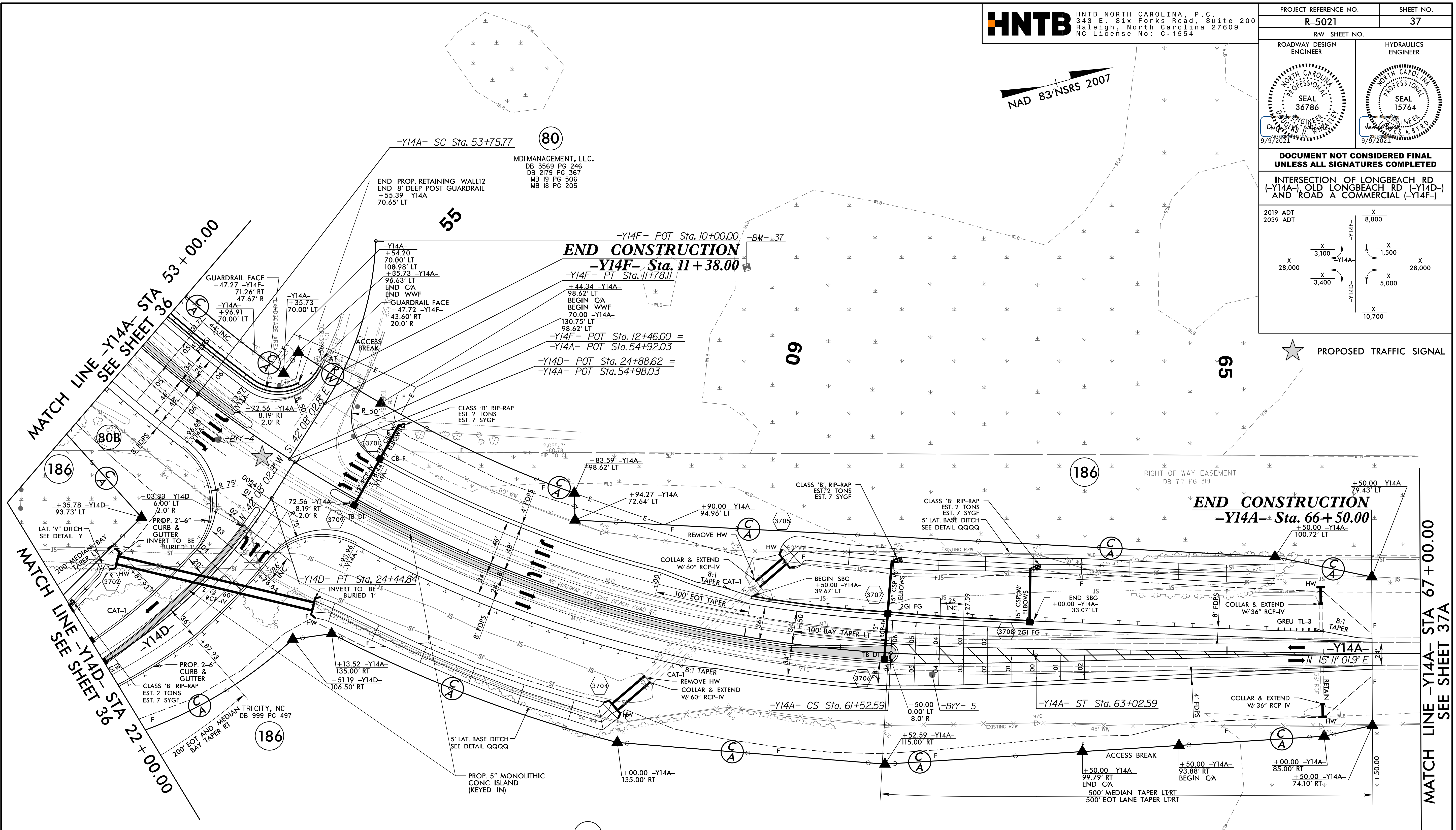
PROJECT REFERENCE NO. <b>R-5021</b>	SHEET NO. <b>37</b>
RW SHEET NO.	
ROADWAY DESIGN ENGINEER	HYDRAULICS ENGINEER

**DOCUMENT NOT CONSIDERED FINAL  
UNLESS ALL SIGNATURES COMPLETED**

**INTERSECTION OF LONGBEACH RD  
(-Y14A-), OLD LONGBEACH RD (-Y14D-)  
AND ROAD A COMMERCIAL (-Y14F-)**



★ PROPOSED TRAFFIC SIGNAL



-Y14A-		
Pls Sta 52+87.87	Pls Sta 57+76.58	Pls Sta 62+02.60
$\Delta = 5^{\circ} 54' 47.7''$	$\Delta = 34^{\circ} 47' 57.5''$ (LT)	$\Delta = 3^{\circ} 21' 35.3''$
$Ls = 264.00'$	$D = 4^{\circ} 28' 47.0''$	$Ls = 150.00'$
$LT = 176.10'$	$L = 776.82'$	$LT = 100.02'$
$ST = 88.09'$	$T = 400.81'$	$ST = 50.02'$
	$R = 1,279.00'$	
	SE = SEE PLANS	
-Y14D-		
Pls Sta 22+31.79	Pls Sta 10+91.15	
$\Delta = 49^{\circ} 01' 57.9''$ (LT)	$\Delta = 30^{\circ} 00' 52.6''$ (RT)	
$D = 10^{\circ} 44' 58.8''$	$D = 16^{\circ} 51' 06.1''$	
$L = 456.13'$	$L = 178.11'$	
$T = 243.09'$	$T = 91.15'$	
$R = 533.00'$	$R = 340.00'$	
SE = SEE PLANS	SE = SEE PLANS	

**NOTE:**

1. ALL DRIVEWAY RADII ARE 20' UNLESS NOTED ON PLANS.
2. PAVED TURNOUTS FOR SHOULDER PLAN SHOULD EXTEND 50' UNLESS NOTED ON PLANS.