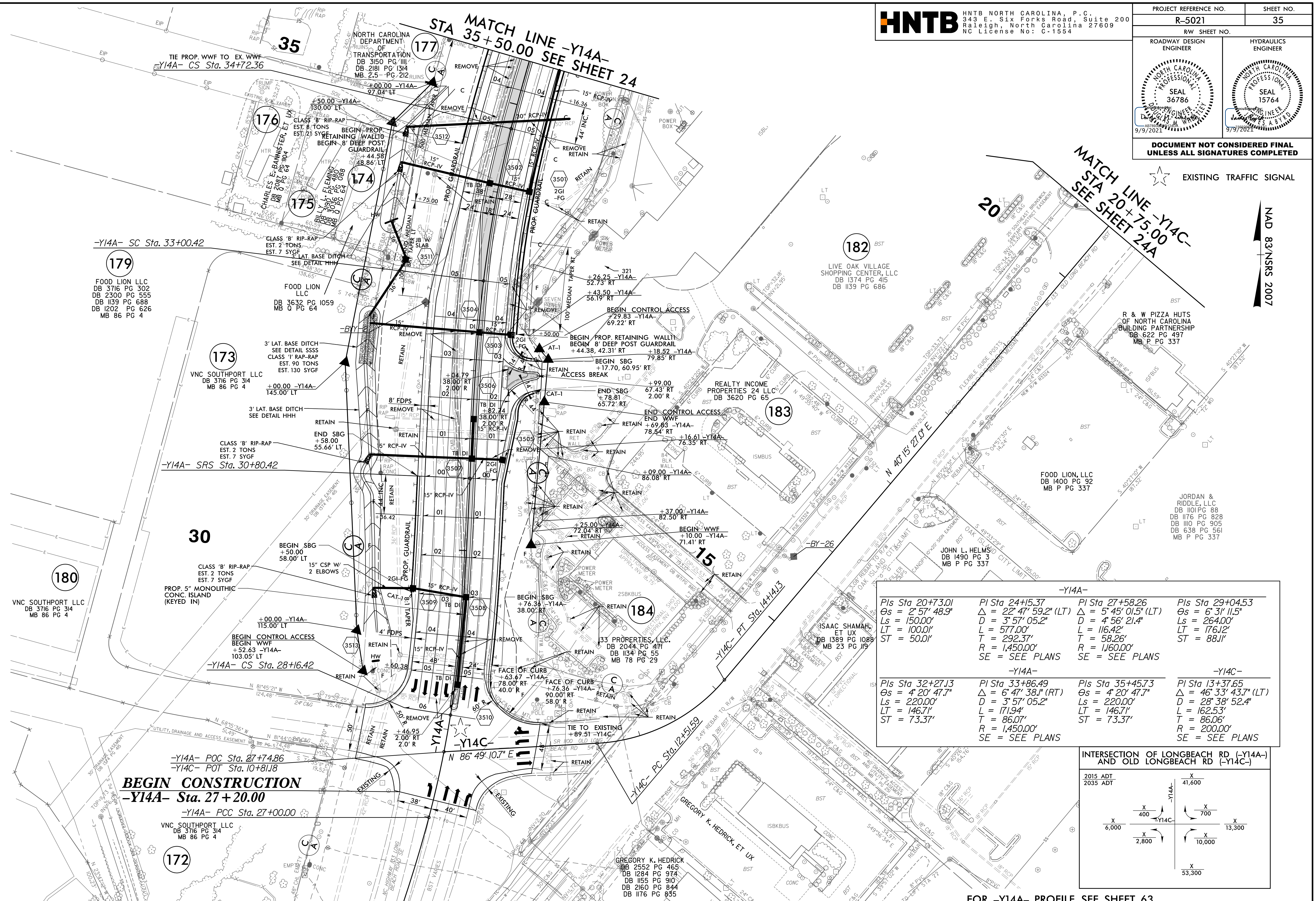


5/14/2021

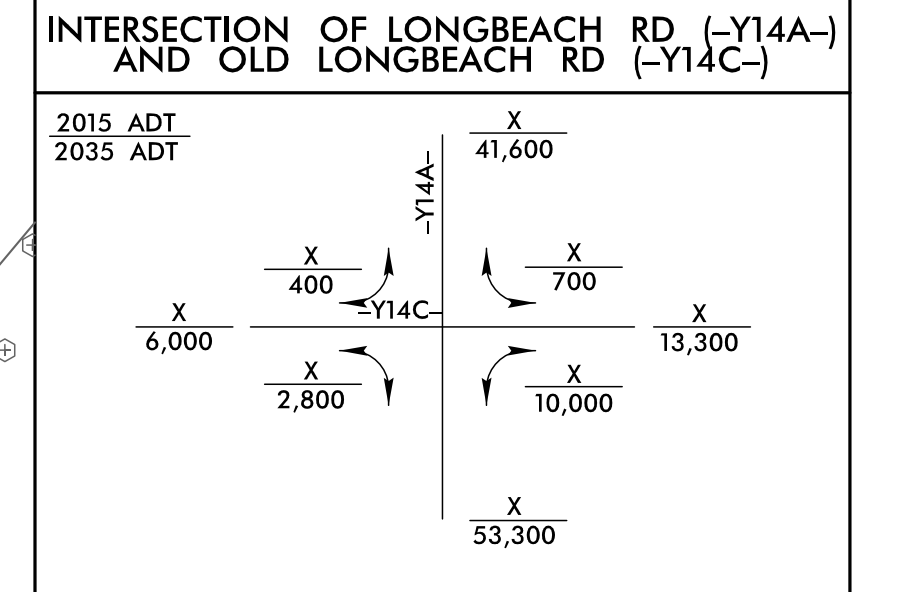
|  |                        |
|--|------------------------|
| PROJECT REFERENCE NO.<br><b>R-5021</b>                               | SHEET NO.<br><b>35</b> |
| RW SHEET NO.   |                        |
| ROADWAY DESIGN ENGINEER  | HYDRAULICS ENGINEER    |
|  |                        |
| <b>DOCUMENT NOT CONSIDERED FINAL UNLESS ALL SIGNATURES COMPLETED</b> |                        |



EXISTING TRAFFIC SIGNAL

NAD 83/NSRS 2007

| -Y14A-   |   |   |   |
|--|---|---|---|
| Pls Sta 20+73.01<br>Os = 2' 57" 48.9"<br>Ls = 150.00'<br>LT = 100.01'<br>ST = 50.01' | Pls Sta 24+15.37<br>Δ = 22' 47" 59.2" (LT)<br>D = 3' 57" 05.2"<br>L = 577.00'<br>T = 292.37'<br>R = 1,450.00' | Pls Sta 27+58.26<br>Δ = 5' 45" 01.5" (LT)<br>D = 4' 56" 21.4"<br>L = 116.42'<br>T = 58.26'<br>R = 1,160.00' | Pls Sta 29+04.53<br>Os = 6' 31" 11.5"<br>Ls = 264.00'<br>LT = 176.12'<br>ST = 88.11'                        |
| -Y14C-   |   |   |   |
| Pls Sta 32+27.13<br>Os = 4' 20" 47.7"<br>Ls = 220.00'<br>LT = 146.71'<br>ST = 73.37' | Pls Sta 33+86.49<br>Δ = 6' 47" 38.1" (RT)<br>D = 3' 57" 05.2"<br>L = 171.94'<br>T = 86.07'<br>R = 1,450.00'   | Pls Sta 35+45.73<br>Os = 4' 20" 47.7"<br>Ls = 220.00'<br>LT = 146.71'<br>ST = 73.37'                        | Pls Sta 13+37.65<br>Δ = 46' 33" 43.7" (LT)<br>D = 28' 38" 52.4"<br>L = 162.53'<br>T = 86.06'<br>R = 200.00' |



**BEGIN CONSTRUCTION**  
 -Y14A- Sta. 27+20.00  
 -Y14A- POC Sta. 27+74.86  
 -Y14C- POT Sta. 10+81.18  
 -Y14A- PCC Sta. 27+00.00

NOTE: 1. ALL DRIVEWAY RADII ARE 20' UNLESS NOTED ON PLANS.  
 2. PAVED TURNOUTS FOR SHOULDER SECTION SHOULD EXTEND 50' UNLESS NOTED ON PLANS.

FOR -Y14A- PROFILE, SEE SHEET 63  
 FOR -Y14C- PROFILE, SEE SHEET 65  
 FOR DRAINAGE DETAILS, SEE SHEETS 2D-1 THRU 2D-3  
 FOR RETAINING WALL PLANS, SEE SHEETS W-8 THRU W-17

22-JUL-2021 09:57  
R:\Roadway\Projects\R-5021\RDY\_PSH35.dgn