

8/17/99

PROJECT REFERENCE NO. <b>R-5021</b>	SHEET NO. <b>34A</b>
RW SHEET NO.	
ROADWAY DESIGN ENGINEER	HYDRAULICS ENGINEER
<b>DOCUMENT NOT CONSIDERED FINAL UNLESS ALL SIGNATURES COMPLETED</b>	

NAD 83/NSRS 2007

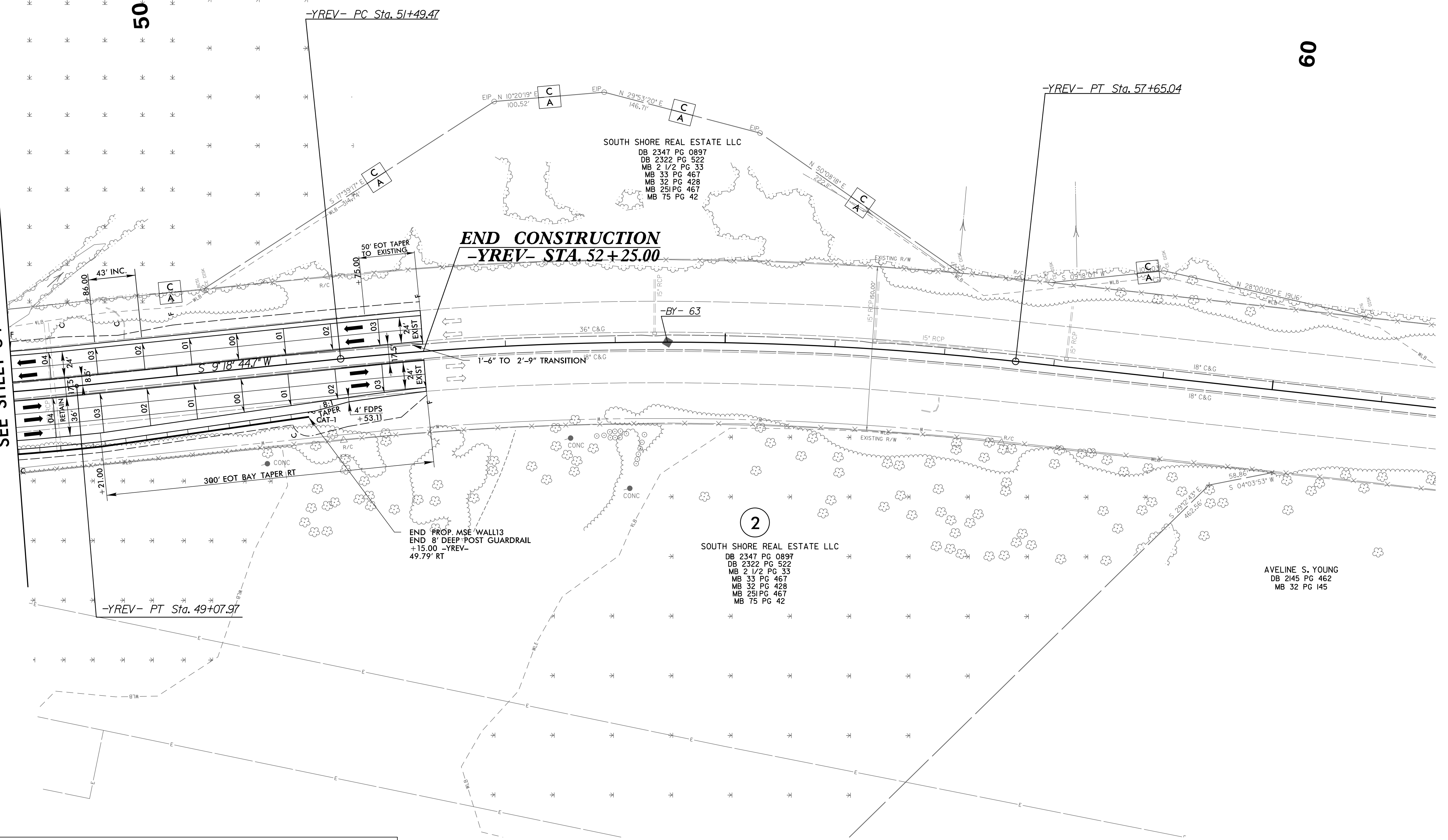
SURVEY OF  
 THE NORTH BAY  
 CONSERVATION EASEMENT  
 FOR  
 THE NORTH CAROLINA  
 DEPARTMENT OF TRANSPORTATION

**146**  
 ST. JAMES  
 PLANTATION, POA, INC  
 DB 2868 PG 618  
 DB 2307 PG 251  
 DB 2669 PG 1105  
 MB 57 PG 1-6  
 MB 56 PG 88  
 MB 34 PG 30  
 MB 42 PG 46-50

55

60

MATCH LINE -YREV- STA 48+50.00  
 SEE SHEET 34



<table border="1"> <tr><td>C</td></tr> <tr><td>A</td></tr> </table>	C	A	<p><b>SPECIAL CONTROL OF ACCESS DESIGNATION</b></p> <p>NO REVISIONS SHALL BE MADE TO THE CONTROL OF ACCESS WITHOUT APPROVAL OF NCDOT, FHWA, USEPA, AND NCDENR PER AGREEMENT AND USAGE PER PERMIT CONDITION.</p>
C			
A			

**2**  
 SOUTH SHORE REAL ESTATE LLC  
 DB 2347 PG 0897  
 DB 2322 PG 522  
 MB 2 1/2 PG 33  
 MB 33 PG 467  
 MB 32 PG 428  
 MB 25 PG 467  
 MB 75 PG 42

AVELINE S. YOUNG  
 DB 2145 PG 462  
 MB 32 PG 145

FOR -YREV- PROFILE, SEE SHEET 56  
 FOR DRAINAGE DETAILS, SEE SHEETS 2D-1 THRU 2D-3  
 FOR RETAINING WALL PLANS, SEE SHEETS W-18 THRU W-22

02-NOV-2021 14:09  
 N:\Roadway\Projects\5021\FDY\_PSH34A.dgn  
 HNTB