

5/14/2021

- NOTE:
1. ALL DRIVEWAY RADII ARE 20' UNLESS NOTED ON PLANS.
 2. PAVED TURNOUTS FOR SHOULDER SECTION SHOULD EXTEND 50' UNLESS NOTED ON PLANS.

-YREV-	
PI Sta 6+03.82 Δs = 13' 45" 00.0" Ls = 250.00' LT = 167.17' ST = 83.79'	PI Sta 7+86.81 Δ = 21' 46" 11.3" (RT) D = 11' 00" 00.0" L = 197.91' T = 100.16' R = 520.87' SE = 6% V = 40MPH
PI Sta 9+51.45 Δs = 11' 00" 00.0" Ls = 200.00' LT = 133.59' ST = 66.90'	PI Sta 18+41.89 Δ = 13' 23" 50.4" (LT) D = 1' 38" 47.1" L = 813.72' T = 408.72' R = 3,480.00' SE = 3% V = 50MPH
PI Sta 31+80.66 Δ = 47' 44" 36.4" (RT) D = 2' 42" 55.6" L = 1,758.22' T = 933.78' R = 2,110.00' SE = 4% V = 50MPH	

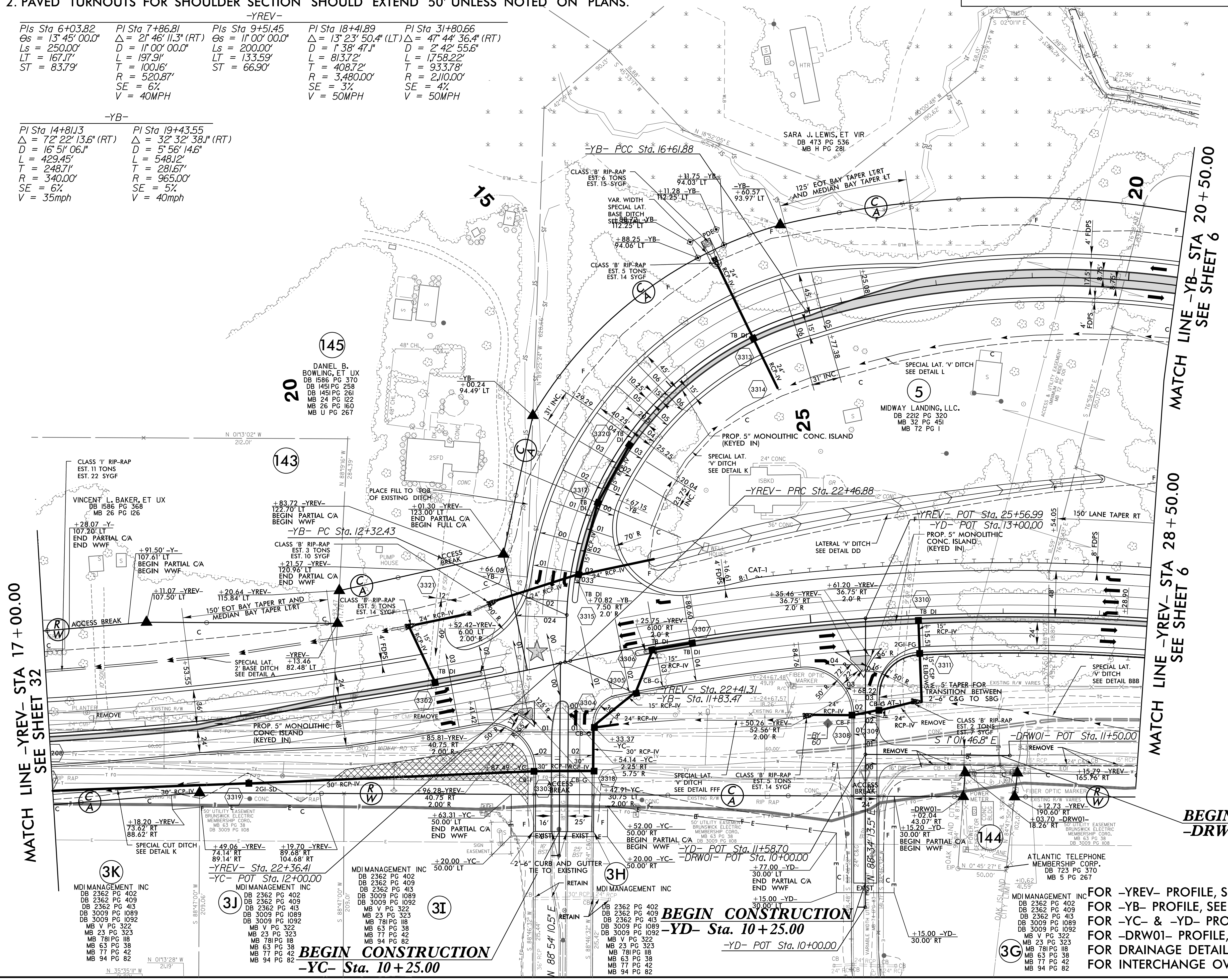
-YB-	
PI Sta 14+81.13 Δ = 72' 22" 13.6" (RT) D = 16' 51" 06.1" L = 429.45' T = 248.71' R = 340.00' SE = 6% V = 35mph	PI Sta 19+43.55 Δ = 32' 32" 38.1" (RT) D = 5' 56" 14.6" L = 548.12' T = 281.67' R = 965.00' SE = 5% V = 40mph

HNTB HNTB NORTH CAROLINA, P.C.
343 E. Six Forks Road, Suite 200
Raleigh, North Carolina 27609
NC License No: C-1554

PROJECT REFERENCE NO. R-5021	SHEET NO. 33
RW SHEET NO. 34	HYDRAULICS ENGINEER
ROADWAY DESIGN ENGINEER	HYDRAULICS ENGINEER
DOCUMENT NOT CONSIDERED FINAL UNLESS ALL SIGNATURES COMPLETED	

NAD 83/NSRS 2007

★ PROPOSED TRAFFIC SIGNAL



MATCH LINE -YREV- STA 17+00.00
SEE SHEET 32

MATCH LINE -YB- STA 20+50.00
SEE SHEET 6

22-JUL-2021 09:57
\\regway\p-co\NR-5021.LRDY_PSH33.dgn

3K
MDI MANAGEMENT INC
DB 2362 PG 402
DB 2362 PG 409
DB 2362 PG 413
DB 3009 PG 1089
DB 3009 PG 1092
MB V PG 322
MB 23 PG 323
MB 78 PG 118
MB 63 PG 38
MB 77 PG 42
MB 94 PG 82

3J
MDI MANAGEMENT INC
DB 2362 PG 402
DB 2362 PG 409
DB 2362 PG 413
DB 3009 PG 1089
DB 3009 PG 1092
MB V PG 322
MB 23 PG 323
MB 78 PG 118
MB 63 PG 38
MB 77 PG 42
MB 94 PG 82

3I
MDI MANAGEMENT INC
DB 2362 PG 402
DB 2362 PG 409
DB 2362 PG 413
DB 3009 PG 1089
DB 3009 PG 1092
MB V PG 322
MB 23 PG 323
MB 78 PG 118
MB 63 PG 38
MB 77 PG 42
MB 94 PG 82

3H
MDI MANAGEMENT INC
DB 2362 PG 402
DB 2362 PG 409
DB 2362 PG 413
DB 3009 PG 1089
DB 3009 PG 1092
MB V PG 322
MB 23 PG 323
MB 78 PG 118
MB 63 PG 38
MB 77 PG 42
MB 94 PG 82

3G
MDI MANAGEMENT INC
DB 2362 PG 402
DB 2362 PG 409
DB 2362 PG 413
DB 3009 PG 1089
DB 3009 PG 1092
MB V PG 322
MB 23 PG 323
MB 78 PG 118
MB 63 PG 38
MB 77 PG 42
MB 94 PG 82

BEGIN CONSTRUCTION
-YC- Sta. 10+25.00

BEGIN CONSTRUCTION
-YD- Sta. 10+25.00

BEGIN CONSTRUCTION
-DRW01- Sta. 11+40.00

FOR -YREV- PROFILE, SEE SHEET 55
 FOR -YB- PROFILE, SEE SHEET 57
 FOR -YC- & -YD- PROFILES, SEE SHEET 58
 FOR -DRW01- PROFILE, SEE SHEET 58
 FOR DRAINAGE DETAILS, SEE SHEETS 2D-1 THRU 2D-3
 FOR INTERCHANGE OVERVIEW, SEE SHEET 2B-7