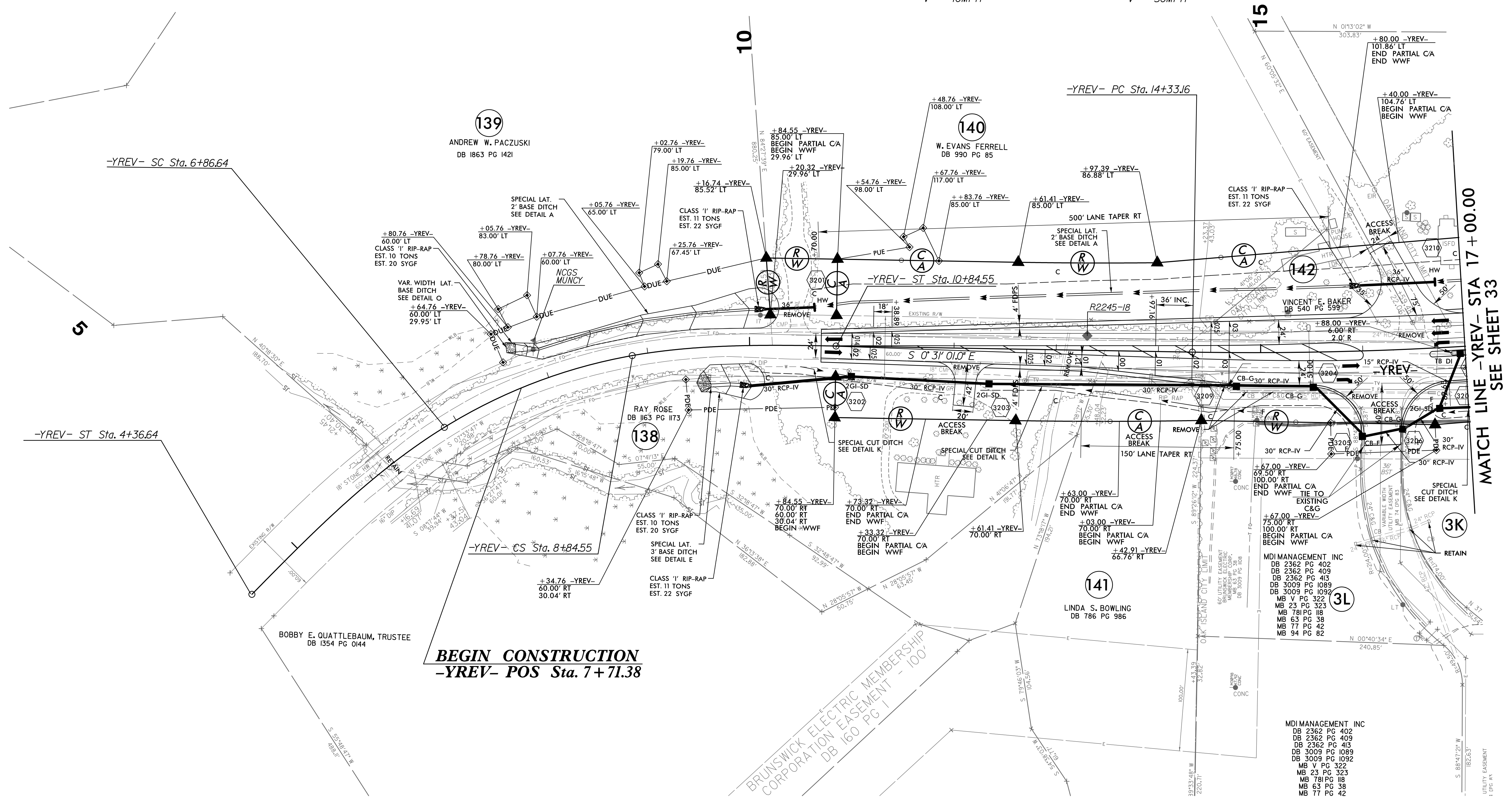


PROJECT REFERENCE NO.	SHEET NO.
R-5021	32
RW SHEET NO.	33
ROADWAY DESIGN ENGINEER	HYDRAULICS ENGINEER
<b>DOCUMENT NOT CONSIDERED FINAL UNLESS ALL SIGNATURES COMPLETED</b>	

NAD 83/NSRS 2007

-YREV-			
Pls Sta 6+03.82	Pls Sta 7+86.81	Pls Sta 9+51.45	Pls Sta 18+41.89
$\Delta s = 13^{\circ} 45' 00.0''$	$\Delta = 21^{\circ} 46' 11.3''$ (RT)	$\Delta s = 11^{\circ} 00' 00.0''$	$\Delta = 13^{\circ} 23' 50.4''$ (LT)
$L_s = 250.00'$	$D = 11^{\circ} 00' 00.0''$	$L_s = 200.00'$	$D = 1^{\circ} 38' 47.1''$
$LT = 167.17'$	$L = 197.91'$	$LT = 133.59'$	$L = 813.72'$
$ST = 83.79'$	$T = 100.16'$	$ST = 66.90'$	$T = 408.72'$
	$R = 520.87'$		$R = 3,480.00'$
	$SE = 6\%$		$SE = 3\%$
	$V = 40MPH$		$V = 50MPH$



**BEGIN CONSTRUCTION**  
 -YREV- POS Sta. 7+71.38

MATCH LINE -YREV- STA 17+00.00  
SEE SHEET 33

- NOTE:**
- ALL DRIVEWAY RADII ARE 20' UNLESS NOTED ON PLANS.
  - PAVED TURNOUTS FOR SHOULDER SECTION SHOULD EXTEND 50' UNLESS NOTED ON PLANS.

FOR -YREV- PROFILE, SEE SHEET 55  
 FOR DRAINAGE DETAILS, SEE SHEETS 2D-1 THRU 2D-3