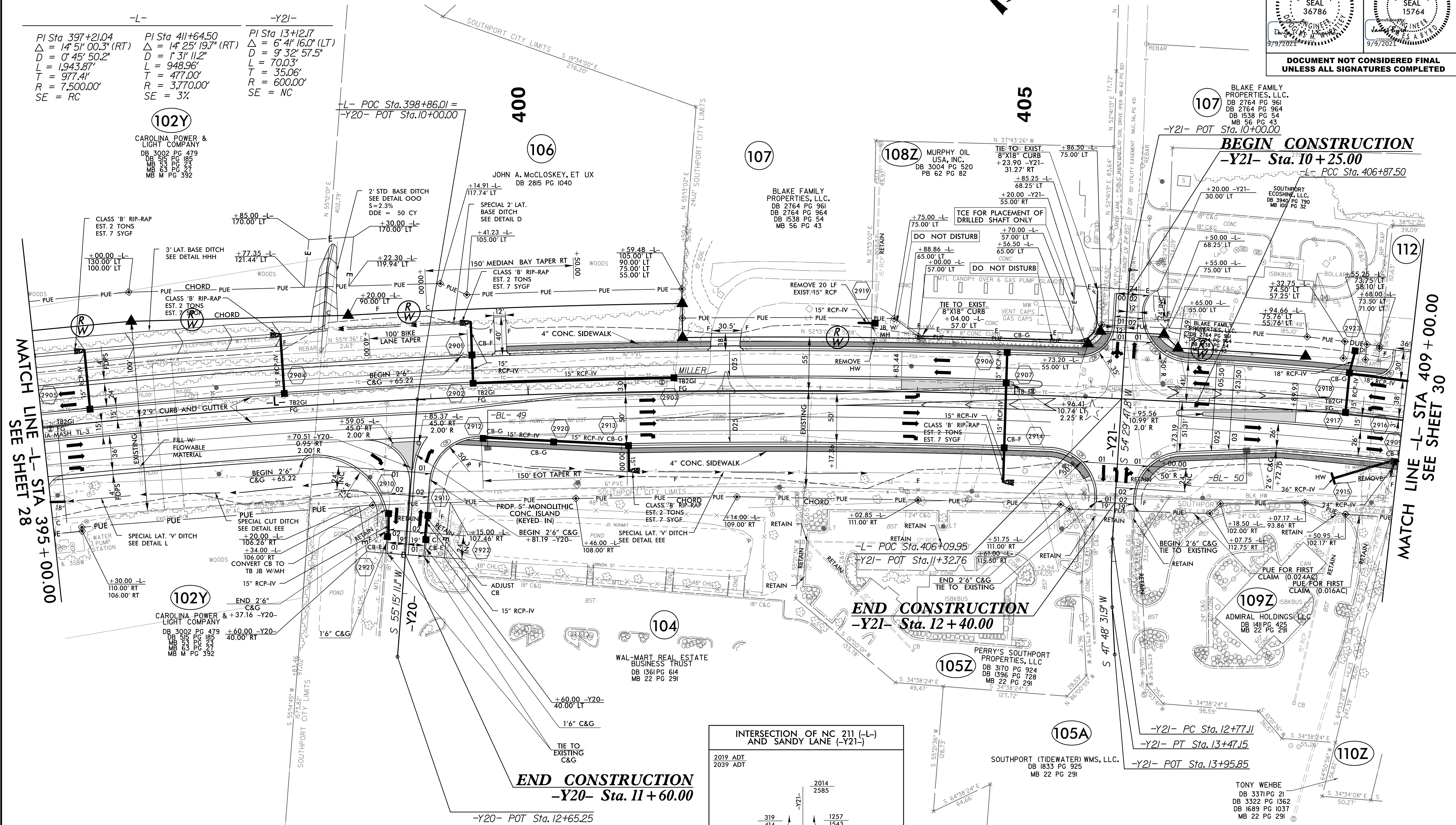


PROJECT REFERENCE NO. R-5021	SHEET NO. 29
RW SHEET NO.	
ROADWAY DESIGN ENGINEER	HYDRAULICS ENGINEER
DOCUMENT NOT CONSIDERED FINAL UNLESS ALL SIGNATURES COMPLETED	

NAD 83 NRS 2007

EXISTING TRAFFIC SIGNAL



- NOTE:**
1. ALL DRIVEWAY RADII ARE 20' UNLESS NOTED ON PLANS.
 2. PAVED TURNOUTS FOR SHOULDER SECTION SHOULD EXTEND 50' UNLESS NOTED ON PLANS.

INTERSECTION OF NC 211 (-L-) AND SANDY LANE (-Y21-)

2019 2039	ADT	ADT	2014 2585
319	414	1257	1543
22280	36185	2376	2757
		3604	5128
		6418	8513

FOR -L- PROFILE, SEE SHEET 53
 FOR -Y20- & -Y21- PROFILES, SEE SHEET 68
 FOR DRAINAGE DETAILS, SEE SHEETS 2D-1 THRU 2D-3