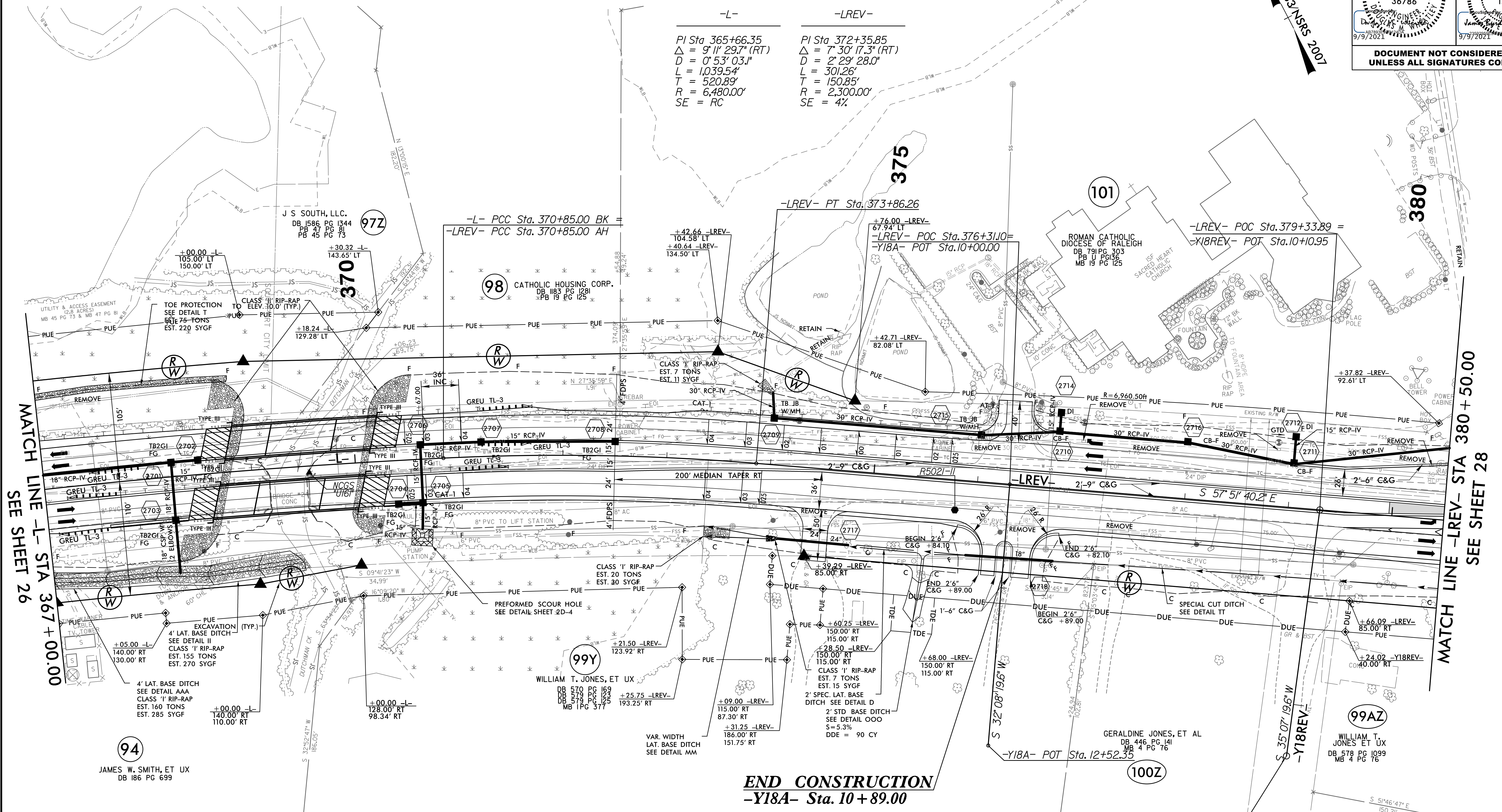
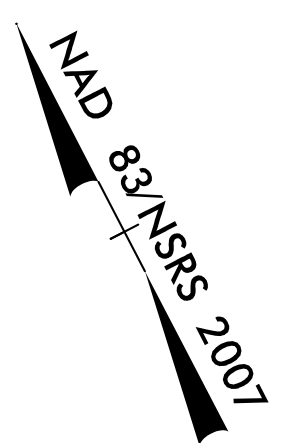
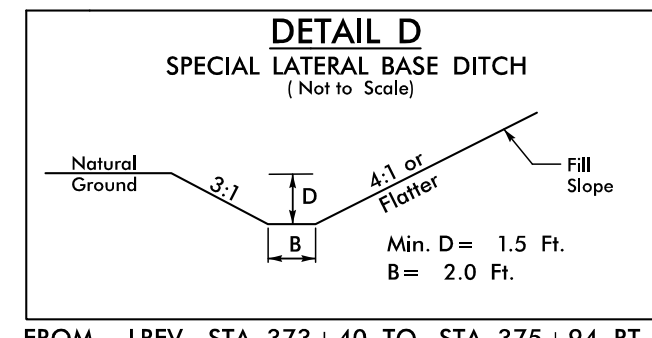
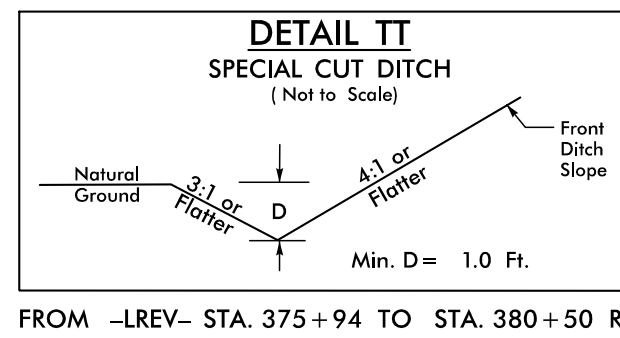


PROJECT REFERENCE NO. <b>R-5021</b>	SHEET NO. <b>27</b>
RW SHEET NO.	
ROADWAY DESIGN ENGINEER	HYDRAULICS ENGINEER
<b>DOCUMENT NOT CONSIDERED FINAL UNLESS ALL SIGNATURES COMPLETED</b>	



-L-                      -LREV-

PI Sta 365+66.35      PI Sta 372+35.85  
 $\Delta = 9' 11'' 29.7'' (RT)$        $\Delta = 7' 30'' 17.3'' (RT)$   
 $D = 0' 53'' 03.1''$                $D = 2' 29'' 28.0''$   
 $L = 1,039.54'$                    $L = 301.26'$   
 $T = 520.89'$                     $T = 150.85'$   
 $R = 6,480.00'$                   $R = 2,300.00'$   
 $SE = RC$                          $SE = 4\%$



**END CONSTRUCTION**  
 -Y18A- Sta. 10 + 89.00

**NOTE:**  
 1. ALL DRIVEWAY RADII ARE 20' UNLESS NOTED ON PLANS.  
 2. PAVED TURNOUTS FOR SHOULDER SECTION SHOULD EXTEND 50' UNLESS NOTED ON PLANS.

FOR -L- & -LREV- PROFILE, SEE SHEET 52  
 FOR -Y18A- PROFILE, SEE SHEET 67  
 FOR DRAINAGE DETAILS, SEE SHEETS 2D-1 THRU 2D-3  
 FOR STRUCTURE PLANS, SEE SHEETS S1-1 THRU S1-38  
 FOR STRUCTURE PLANS, SEE SHEETS S2-1 THRU S2-38  
 FOR BRIDGE DETAIL SKETCH, SEE SHEET 2B-6

22-JUL-2021 09:57:17 R:\Roadway\Projects\R-5021-RDY\_PSH27.dgn