

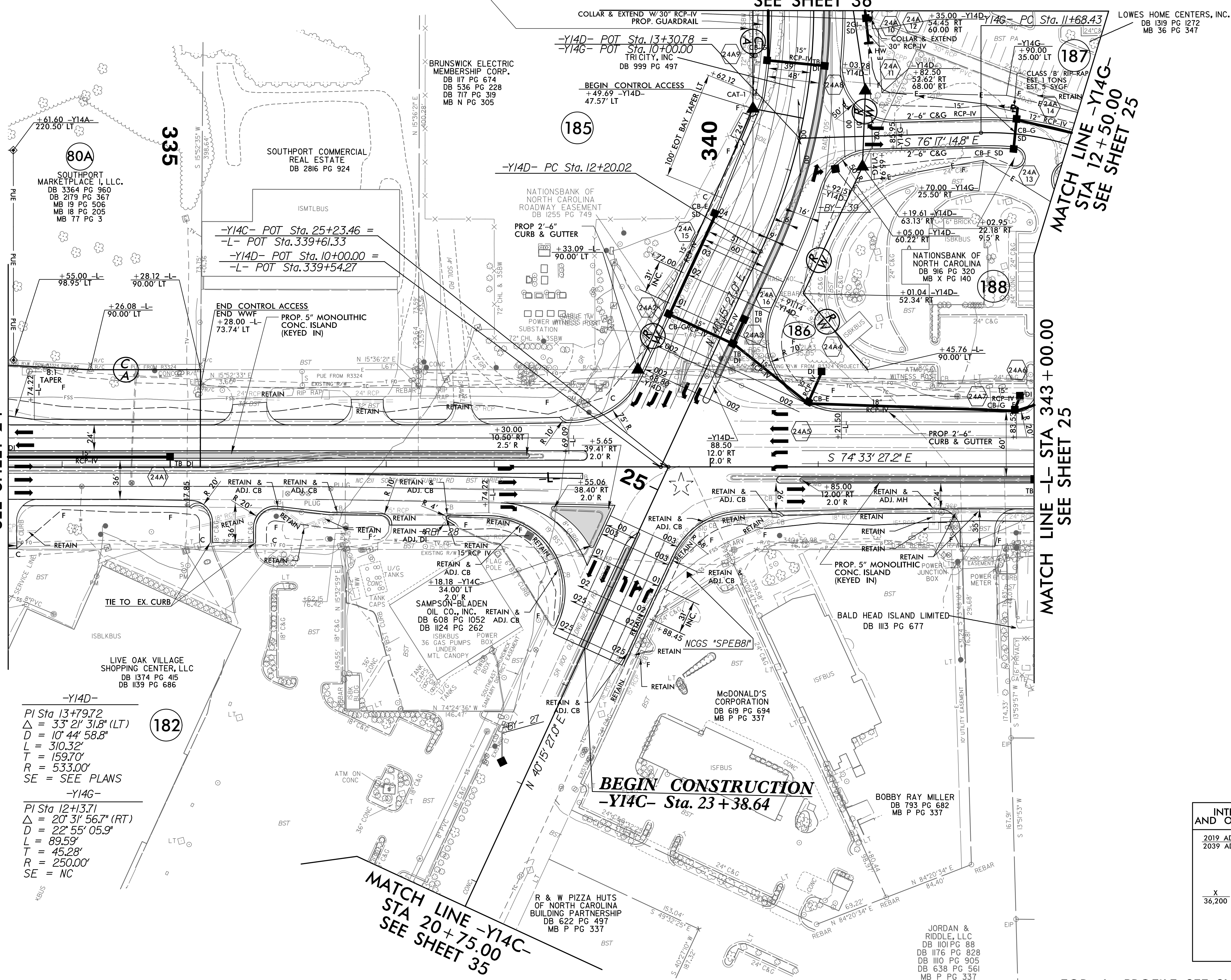
PROJECT REFERENCE NO. R-5021	SHEET NO. 24A
RW SHEET NO.	
ROADWAY DESIGN ENGINEER	HYDRAULICS ENGINEER
DOCUMENT NOT CONSIDERED FINAL UNLESS ALL SIGNATURES COMPLETED	

DO NOT DISTURB FENCE AROUND BRUNSWICK ELECTRIC PARCEL

**MATCH LINE -Y14D- STA 14+50.00
SEE SHEET 36**

**MATCH LINE -L- STA 333+50.00
SEE SHEET 24**

**MATCH LINE -L- STA 343+00.00
SEE SHEET 25**



-Y14D-
 PI Sta 13+79.72
 $\Delta = 33' 21'' 31.8''$ (LT)
 $D = 10' 44'' 58.8''$
 $L = 310.32'$
 $T = 159.70'$
 $R = 533.00'$
 SE = SEE PLANS

-Y14G-
 PI Sta 12+13.71
 $\Delta = 20' 31'' 56.7''$ (RT)
 $D = 22' 55'' 05.9''$
 $L = 89.59'$
 $T = 45.28'$
 $R = 250.00'$
 SE = NC

INTERSECTION OF NC 211 (-L-) AND OLD LONGBEACH RD (-Y14CD-)

2019 ADT				
2039 ADT				
	X	X	X	X
	13,500	28,800	8,500	38,100
	X	X	X	X
	36,200	4,500	11,400	22,700

NOTE: 1. ALL DRIVEWAY RADII ARE 20' UNLESS NOTED ON PLANS.
 2. PAVED TURNOUTS FOR SHOULDER SECTION SHOULD EXTEND 50' UNLESS NOTED ON PLANS.