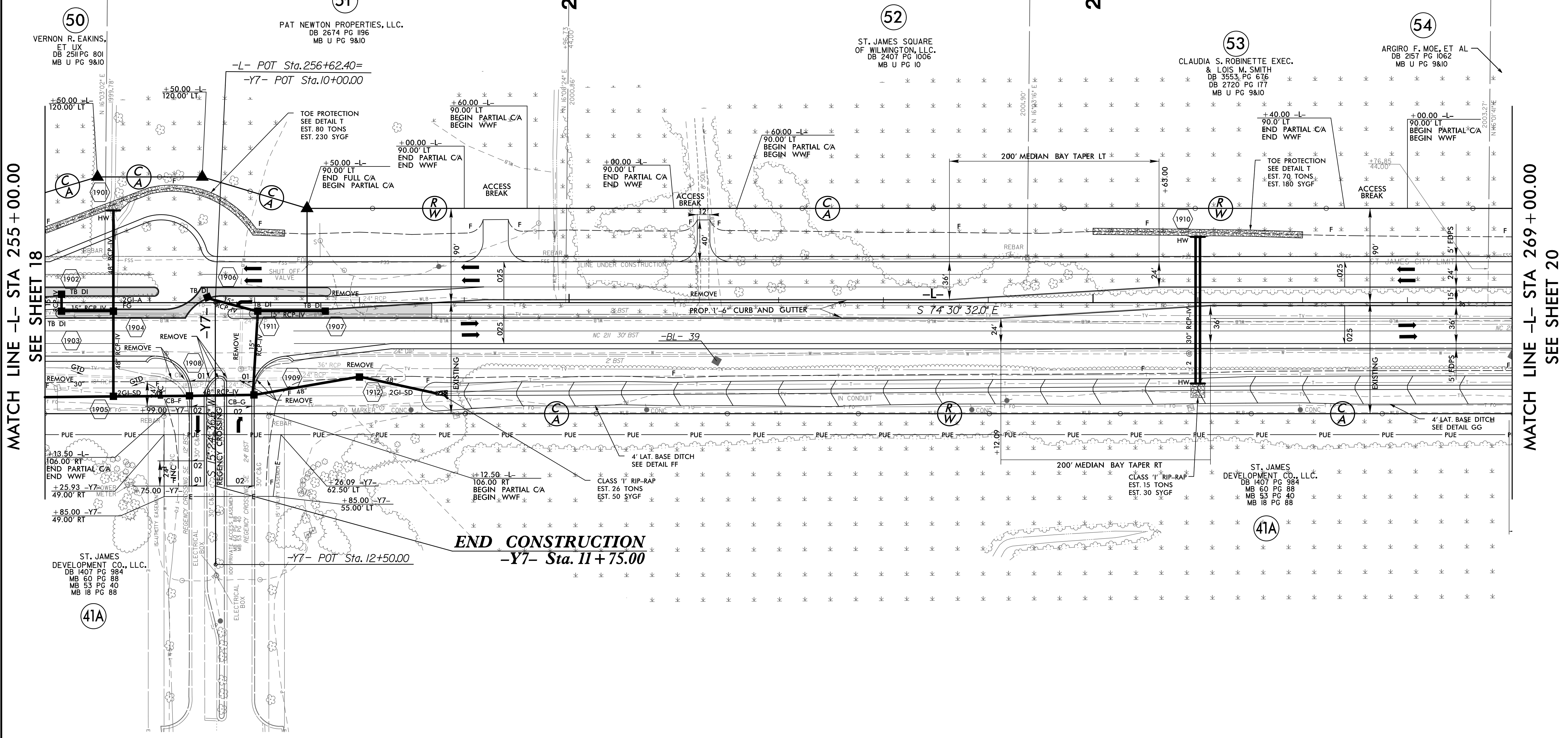
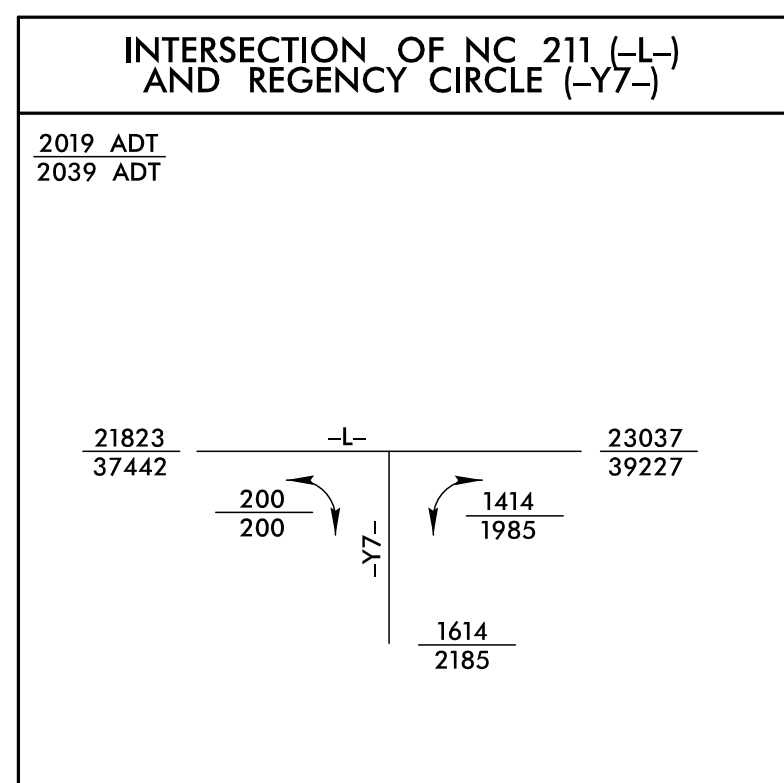


5/14/2021

PROJECT REFERENCE NO. <b>R-5021</b>	SHEET NO. <b>19</b>
RW SHEET NO.	
ROADWAY DESIGN ENGINEER	HYDRAULICS ENGINEER
<b>DOCUMENT NOT CONSIDERED FINAL UNLESS ALL SIGNATURES COMPLETED</b>	



MATCH LINE -L- STA 255 + 00.00  
SEE SHEET 18

MATCH LINE -L- STA 269 + 00.00  
SEE SHEET 20

**END CONSTRUCTION**  
**-Y7- Sta. 11 + 75.00**

**NOTE:**

1. ALL DRIVEWAY RADII ARE 20' UNLESS NOTED ON PLANS.
2. PAVED TURNOUTS FOR SHOULDER SECTION SHOULD EXTEND 50' UNLESS NOTED ON PLANS.

FOR -L- PROFILE, SEE SHEET 48  
 FOR -Y7- PROFILE, SEE SHEET 61  
 FOR INTERSECTION DETAIL AND DIRECTIONAL CROSS OVER, SEE SHEET 2B-2  
 FOR DRAINAGE DETAILS, SEE SHEETS 2D-1 THRU 2D-3

22-JUL-2021 09:45:56  
\\regway\p\o\NR-5021\RDY\_PSH19.dgn