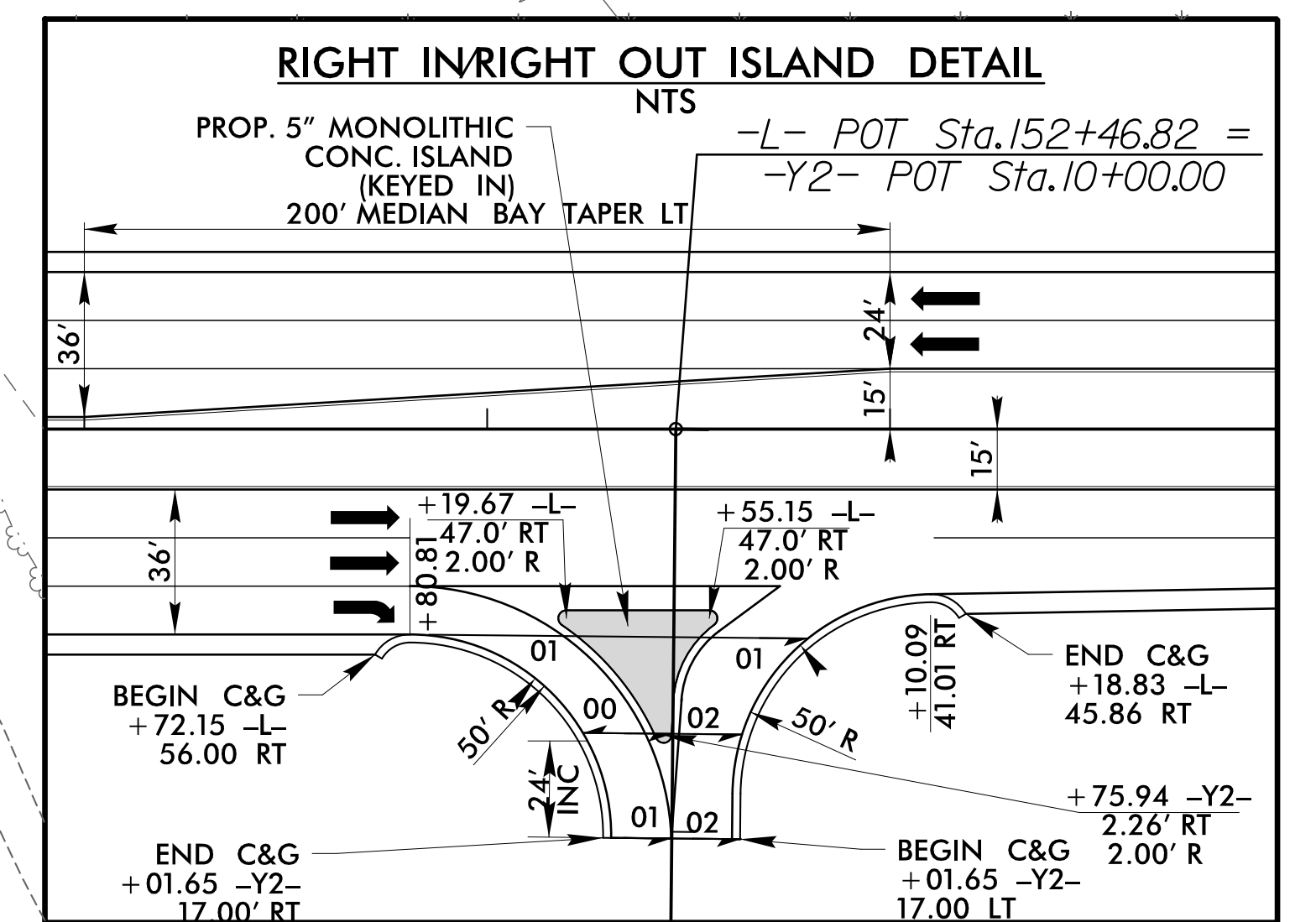
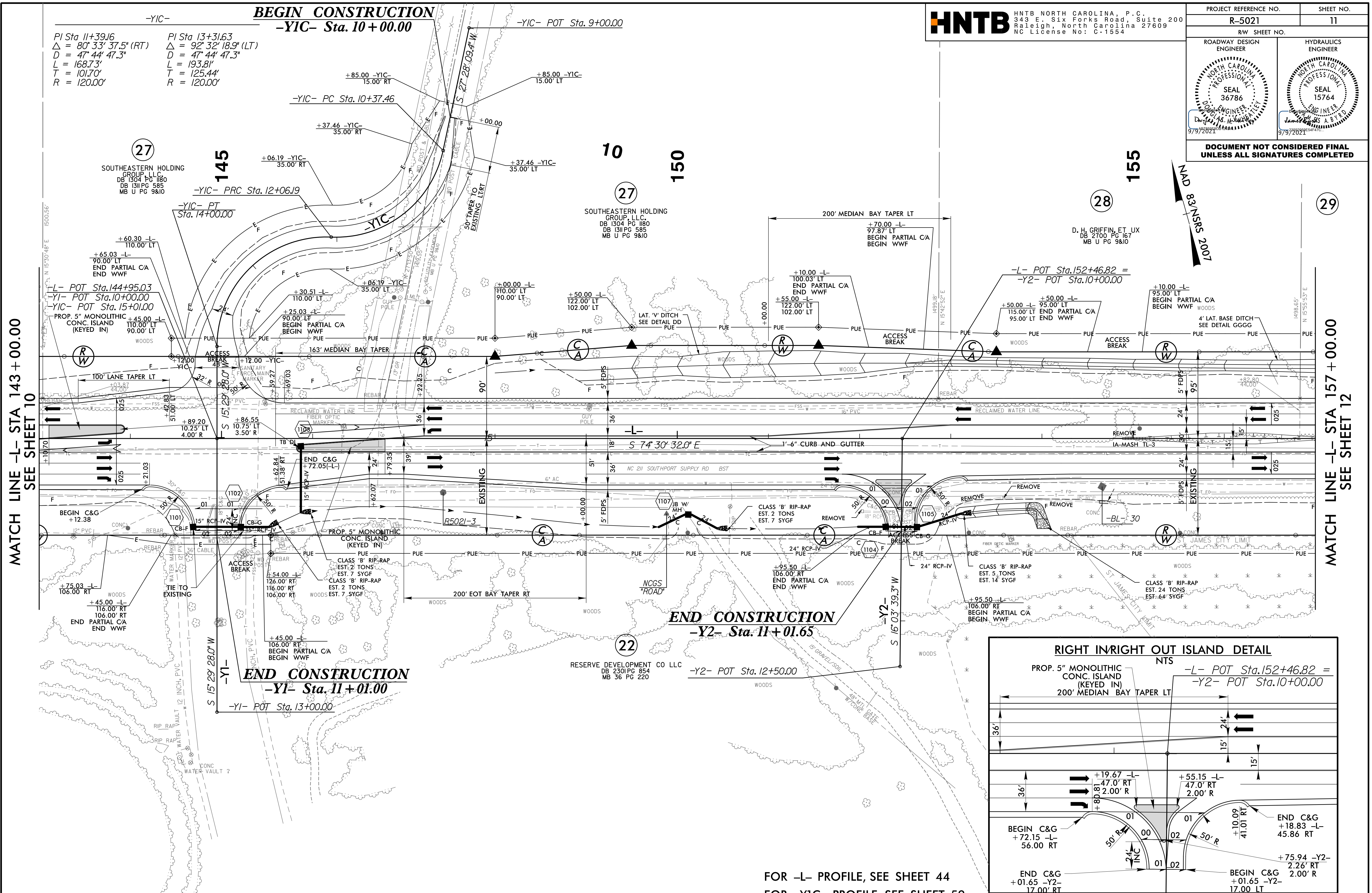


5/14/19/99

PROJECT REFERENCE NO. R-5021	SHEET NO. 11
RW SHEET NO.	
ROADWAY DESIGN ENGINEER	HYDRAULICS ENGINEER
DOCUMENT NOT CONSIDERED FINAL UNLESS ALL SIGNATURES COMPLETED	



- NOTE:**
1. ALL DRIVEWAY RADII ARE 20' UNLESS NOTED ON PLANS.
 2. PAVED TURNOUTS FOR SHOULDER SECTION SHOULD EXTEND 50' UNLESS NOTED ON PLANS.

FOR -L- PROFILE, SEE SHEET 44
 FOR -Y1C- PROFILE, SEE SHEET 59
 FOR -Y1- PROFILE, SEE SHEET 59
 FOR -Y2- PROFILE, SEE SHEET 60
 FOR DRAINAGE DETAILS, SEE SHEETS 2D-1 THRU 2D-3

22-JUL-2021 09:56
Roadway\p-co\NR-5021.RD\PSH11.dgn