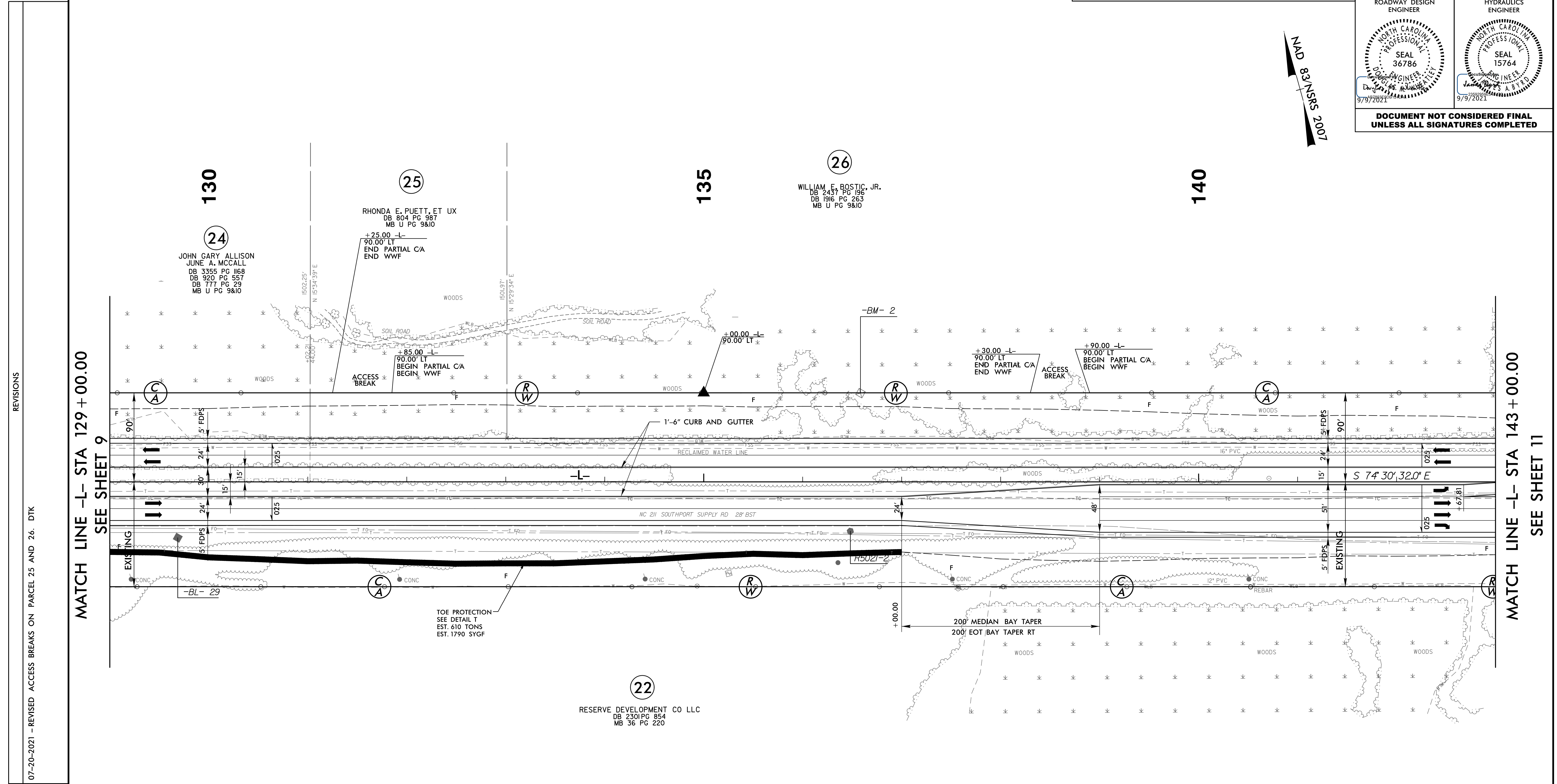


5/14/20

PROJECT REFERENCE NO. R-5021	SHEET NO. 10
RW SHEET NO.	
ROADWAY DESIGN ENGINEER	HYDRAULICS ENGINEER
DOCUMENT NOT CONSIDERED FINAL UNLESS ALL SIGNATURES COMPLETED	

MND 8/31/2007



07-20-2021 - REVISED ACCESS BREAKS ON PARCEL 25 AND 26. DTK

MATCH LINE -L- STA 129 + 00.00
SEE SHEET 9

MATCH LINE -L- STA 143 + 00.00
SEE SHEET 11

NOTE:

1. ALL DRIVEWAY RADII ARE 20' UNLESS NOTED ON PLANS.
2. PAVED TURNOUTS FOR SHOULDER SECTION SHOULD EXTEND 50' UNLESS NOTED ON PLANS.
3. DEWATERING, TURBIDITY CURTAIN AND IMPERVIOUS DIKE WILL BE USED TO DEWATER AREAS OF STANDING WATER AT STA 133+50 TO 138+50 TO ALLOW UNDERCUT AND BACKFILL TO OCCUR IN THE DRY.

FOR -L- PROFILE, SEE SHEET 44
FOR DRAINAGE DETAILS, SEE SHEETS 2D-1 THRU 2D-3

22-JUL-2021 09:56
\\regdway-proj\NR-5021-LRDY_PSH10.dgn