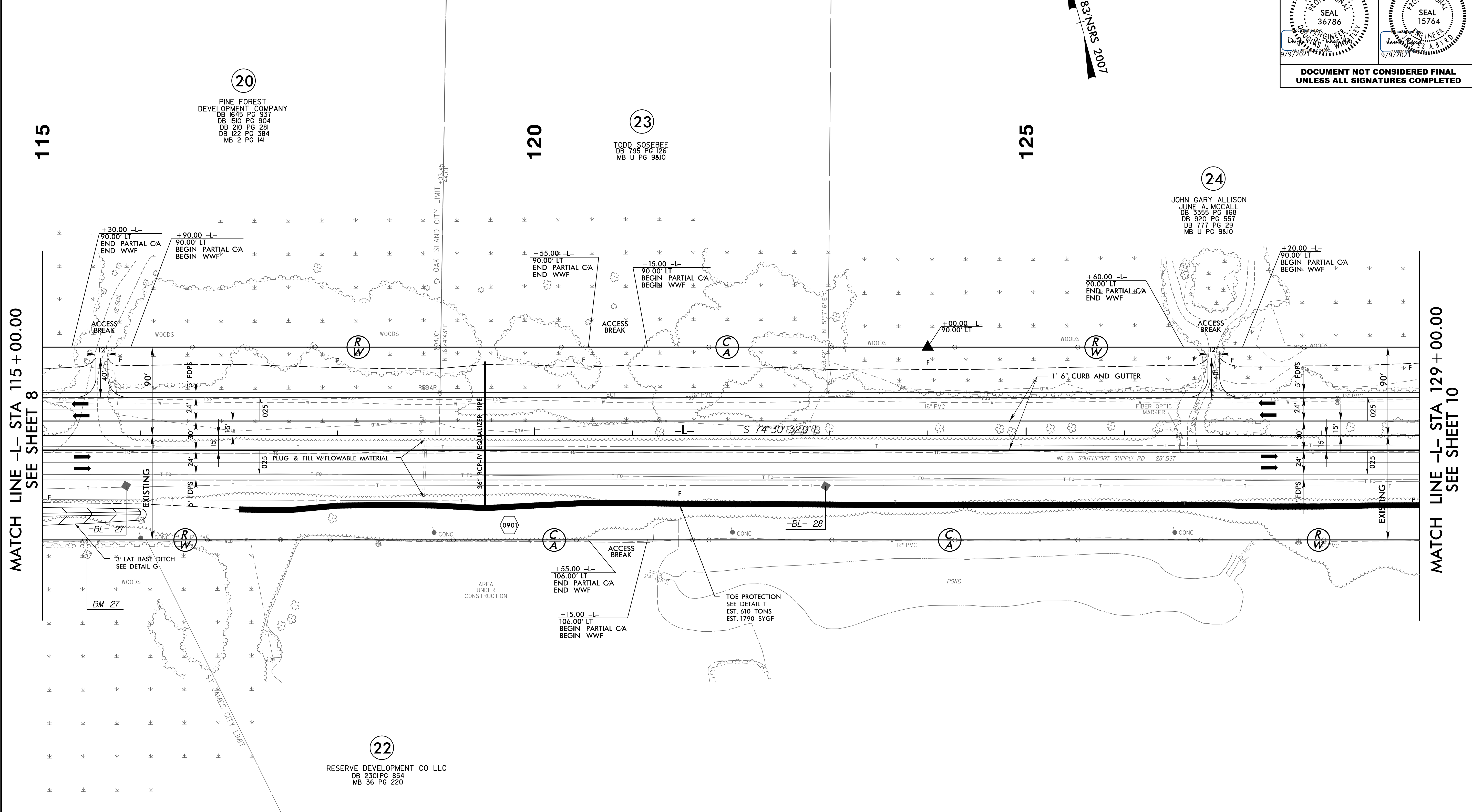
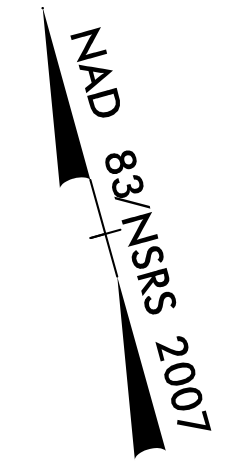


5/14/20

PROJECT REFERENCE NO. <b>R-5021</b>	SHEET NO. <b>9</b>
RW SHEET NO.	
ROADWAY DESIGN ENGINEER	HYDRAULICS ENGINEER
<b>DOCUMENT NOT CONSIDERED FINAL UNLESS ALL SIGNATURES COMPLETED</b>	



MATCH LINE -L- STA 115 + 00.00  
SEE SHEET 8

MATCH LINE -L- STA 129 + 00.00  
SEE SHEET 10

**NOTE:**

1. ALL DRIVEWAY RADII ARE 20' UNLESS NOTED ON PLANS.
2. PAVED TURNOUTS FOR SHOULDER SECTION SHOULD EXTEND 50' UNLESS NOTED ON PLANS.
3. DEWATERING, TURBIDITY CURTAIN AND IMPERVIOUS DIKE WILL BE USED TO DEWATER AREAS OF STANDING WATER AT STA 118+50 TO 123+00 TO ALLOW UNDERCUT AND BACKFILL TO OCCUR IN THE DRY.

FOR -L- PROFILE, SEE SHEET 43  
 FOR DRAINAGE DETAILS, SEE SHEETS 2D-1 THRU 2D-3

22-JUL-2021 09:56  
 \\regdway\p-co\jnr-5021\_RDY\_PSH9.dgn