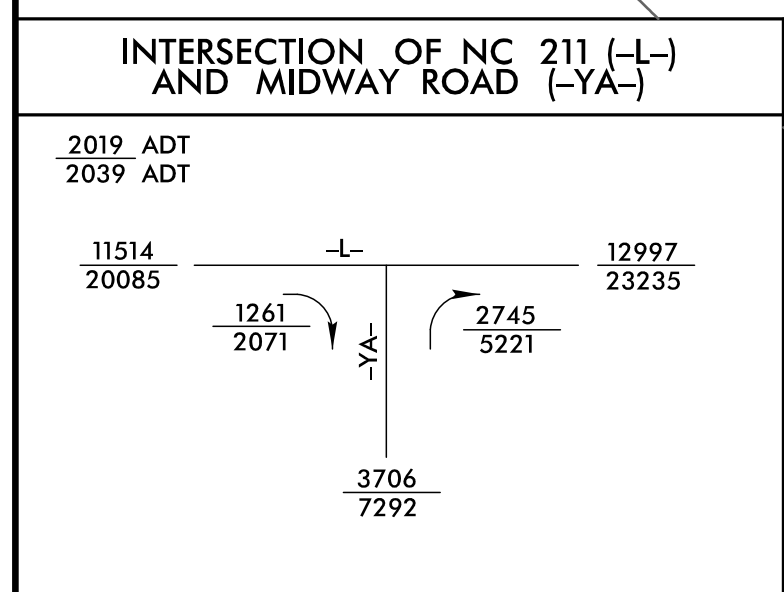
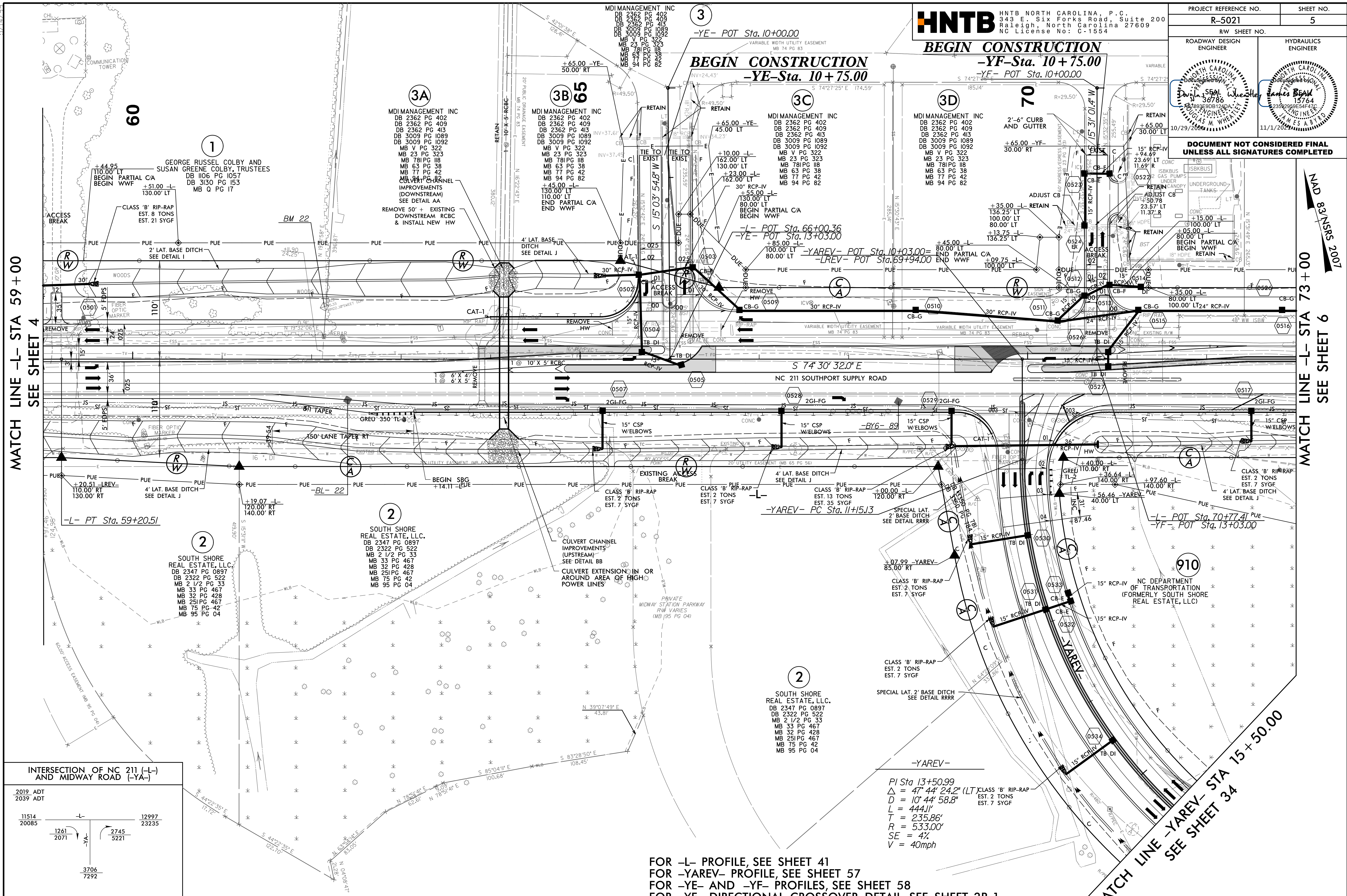


PROJECT REFERENCE NO. R-5021	SHEET NO. 5
ROADWAY DESIGN ENGINEER <i>[Signature]</i>	HYDRAULICS ENGINEER <i>[Signature]</i>
<p>DOCUMENT NOT CONSIDERED FINAL UNLESS ALL SIGNATURES COMPLETED</p>	



NOTE:
1. ALL DRIVEWAY RADII ARE 20' UNLESS NOTED ON PLANS.
2. PAVED TURNOUTS FOR SHOULDER SECTION SHOULD EXTEND 50' UNLESS NOTED ON PLANS.

FOR -L- PROFILE, SEE SHEET 41
FOR -YAREV- PROFILE, SEE SHEET 57
FOR -YE- AND -YF- PROFILES, SEE SHEET 58
FOR -YE- DIRECTIONAL CROSSOVER DETAIL, SEE SHEET 2B-1
FOR CULVERT PLANS, SEE SHEETS C1-1 THRU C1-4
FOR DRAINAGE DETAILS, SEE SHEETS 2D-1 THRU 2D-3
FOR EMERGENCY MEDIAN CROSSOVER DETAIL, SEE SHEET 2B-10

-YAREV-
PI Sta 13+50.99
Δ = 47° 44' 24.2" (LT)
D = 10' 44' 58.8"
L = 444.1'
T = 235.86'
R = 533.00'
SE = 4%
V = 40mph

30-SEP-2021 09:56: ARogdwy\pfoj\NR-5021-RD_Y_PSH5.dgn

MATCH LINE -L- STA 73+00 SEE SHEET 6

MATCH LINE -L- STA 59+00 SEE SHEET 4