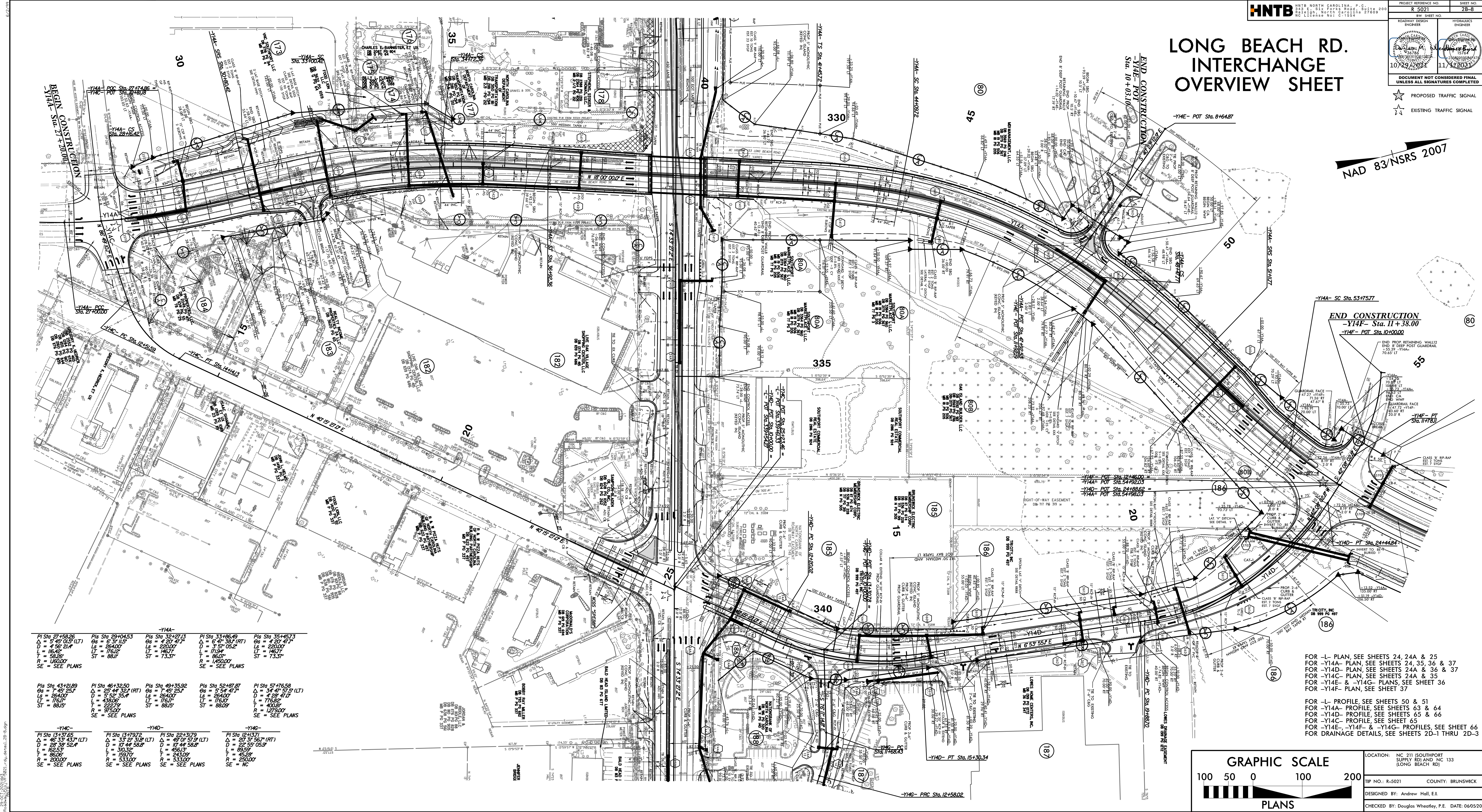


# LONG BEACH RD. INTERCHANGE OVERVIEW SHEET

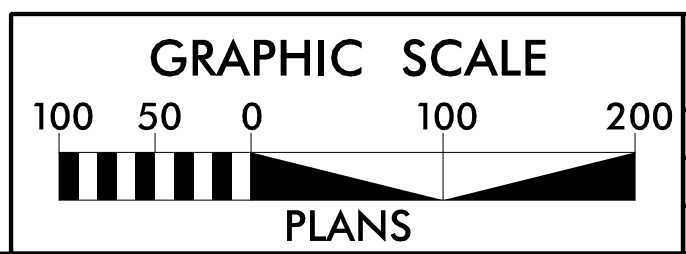
NAD 83/NSRS 2007



<p>-Y14A-</p> <p>PI Sta 27+58.26 Δ = 5° 49' 01.5" (LT) D = 459' 01.4" L = 16.42' T = 58.26' R = 1450.00' SE = SEE PLANS</p>	<p>-Y14A-</p> <p>PI Sta 29+04.53 Δ = 6° 31' 11.5" D = 284.00' L = 176.12' T = 88.17' R = 1450.00' SE = SEE PLANS</p>	<p>-Y14A-</p> <p>PI Sta 32+27.13 Δ = 4° 20' 47.7" D = 571' 05.2" L = 146.71' T = 73.31' R = 1450.00' SE = SEE PLANS</p>	<p>-Y14A-</p> <p>PI Sta 33+96.49 Δ = 6° 41' 38.1" (RT) D = 371' 05.2" L = 171.81' T = 88.17' R = 1450.00' SE = SEE PLANS</p>	<p>-Y14A-</p> <p>PI Sta 35+46.73 Δ = 4° 20' 47.7" D = 571' 05.2" L = 146.71' T = 73.31' R = 1450.00' SE = SEE PLANS</p>
<p>-Y14A-</p> <p>PI Sta 43+10.89 Δ = 7° 40' 25.7" D = 264.00' L = 176.12' T = 88.17' R = 1450.00' SE = SEE PLANS</p>	<p>-Y14A-</p> <p>PI Sta 46+32.50 Δ = 2° 44' 32.4" (RT) D = 552' 30.4" L = 438.92' T = 227.72' R = 975.00' SE = SEE PLANS</p>	<p>-Y14A-</p> <p>PI Sta 49+35.92 Δ = 7° 40' 25.7" D = 264.00' L = 176.12' T = 88.17' R = 1450.00' SE = SEE PLANS</p>	<p>-Y14A-</p> <p>PI Sta 52+10.81 Δ = 5° 54' 41.7" D = 264.00' L = 176.12' T = 88.17' R = 1450.00' SE = SEE PLANS</p>	<p>-Y14A-</p> <p>PI Sta 57+76.58 Δ = 3° 41' 51.2" (LT) D = 776.82' L = 491.81' T = 1279.00' R = 1450.00' SE = SEE PLANS</p>
<p>-Y14C-</p> <p>PI Sta 13+71.25 Δ = 48° 13' 43.7" (LT) D = 228' 39' 52.4" L = 82.53' T = 186.09' R = 2000.00' SE = SEE PLANS</p>	<p>-Y14D-</p> <p>PI Sta 13+79.72 Δ = 33° 29' 31.8" (LT) D = 10' 44' 58.8" L = 30.12' T = 159.70' R = 533.00' SE = SEE PLANS</p>	<p>-Y14E-</p> <p>PI Sta 22+13.79 Δ = 45° 01' 51.2" (LT) D = 10' 44' 58.8" L = 48.13' T = 243.00' R = 533.00' SE = SEE PLANS</p>	<p>-Y14G-</p> <p>PI Sta 12+13.71 Δ = 31° 31' 56.7" (RT) D = 222' 55' 05.5" L = 88.59' T = 45.28' R = 2500.00' SE = NC</p>	

FOR -L- PLAN, SEE SHEETS 24, 24A & 25  
FOR -Y14A- PLAN, SEE SHEETS 24, 35, 36 & 37  
FOR -Y14D- PLAN, SEE SHEETS 24A & 36 & 37  
FOR -Y14C- PLAN, SEE SHEETS 24A & 35  
FOR -Y14E- & -Y14G- PLANS, SEE SHEET 36  
FOR -Y14F- PLAN, SEE SHEET 37

FOR -L- PROFILE, SEE SHEETS 50 & 51  
FOR -Y14A- PROFILE, SEE SHEETS 63 & 64  
FOR -Y14D- PROFILE, SEE SHEETS 65 & 66  
FOR -Y14C- PROFILE, SEE SHEET 65  
FOR -Y14E-, -Y14F- & -Y14G- PROFILES, SEE SHEET 66  
FOR DRAINAGE DETAILS, SEE SHEETS 2D-1 THRU 2D-3



LOCATION: NC 211 (SOUTHPORT SUPPLY RD) AND NC 133 (LONG BEACH RD)  
TIP NO.: R-5021 COUNTY: BRUNSWICK  
DESIGNED BY: Andrew Hall, E.I.  
CHECKED BY: Douglas Wheatley, P.E. DATE: 06/05/2018