

6/2/2021

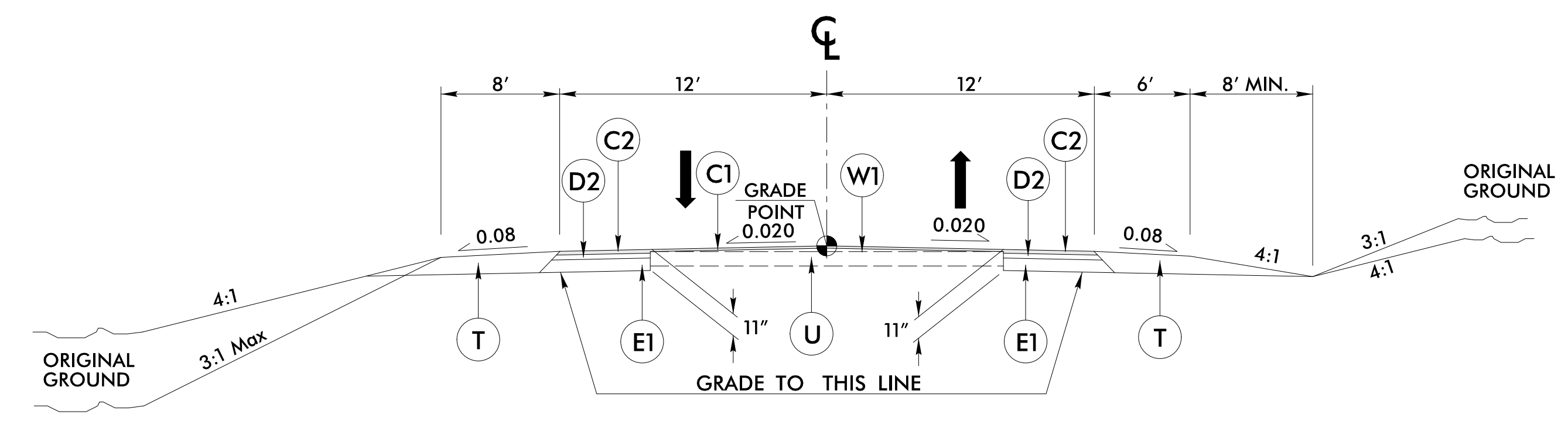
PAVEMENT SCHEDULE
(FINAL PAVEMENT DESIGN)

C1	PROP. APPROX. 1.5" ACSC, TYPE S9.5B
C2	PROP. APPROX. 3" ACSC, TYPE S9.5B
C3	PROP. VAR. DEPTH ACSC, TYPE S9.5B
C4	PROP. APPROX. 1.5" ACSC, TYPE S9.5C
C5	PROP. APPROX. 3" ACSC, TYPE S9.5C
C6	PROP. VAR. DEPTH ACSC, TYPE S9.5C
D1	PROP. APPROX. 2.5" ACIC, TYPE I19.0C
D2	PROP. APPROX. 4" ACIC, TYPE I19.0C
D3	PROP. VAR. DEPTH ACIC, TYPE I19.0C
E1	PROP. APPROX. 4" ACBC, TYPE B25.0C
E2	PROP. VAR. DEPTH ACBC, TYPE B25.0C
J1	PROP. 6" ABC
J2	PROP. 8" ABC
J3	VARIABLE DEPTH ABC
K	PROP. 5" CLASS IV AGGREGATE STABILIZATION
P	PRIME COAT
R1	2'-6" CONCRETE CURB AND GUTTER.
R2	2'-9" CONCRETE CURB AND GUTTER.
R3	1'-6" CONCRETE CURB AND GUTTER. (STD MOUNTABLE)
R4	5" MONOLITHIC CONCRETE ISLAND
R5	SHOULDER BERM GUTTER
R6	EXPRESSWAY GUTTER
R7	8"x18" CURB
R8	1'-6" CONCRETE CURB AND GUTTER. (SP 1'PAN-6" GUTTER)
R9	7" JOINTED CONCRETE (WITHOUT DOWELS REINFORCED WITH A W3.5 X W3.5 OR W5 X W5 WIRE MESH)
R10	9"x18" CONCRETE CURB
S1	4" CONCRETE SIDEWALK
T	EARTH MATERIAL
U	EXISTING PAVEMENT.
W1	WEDGING METHOD NO. 1 - SEE SHEET 2A-1
W2	WEDGING METHOD NO. 2 - SEE SHEET 2A-1

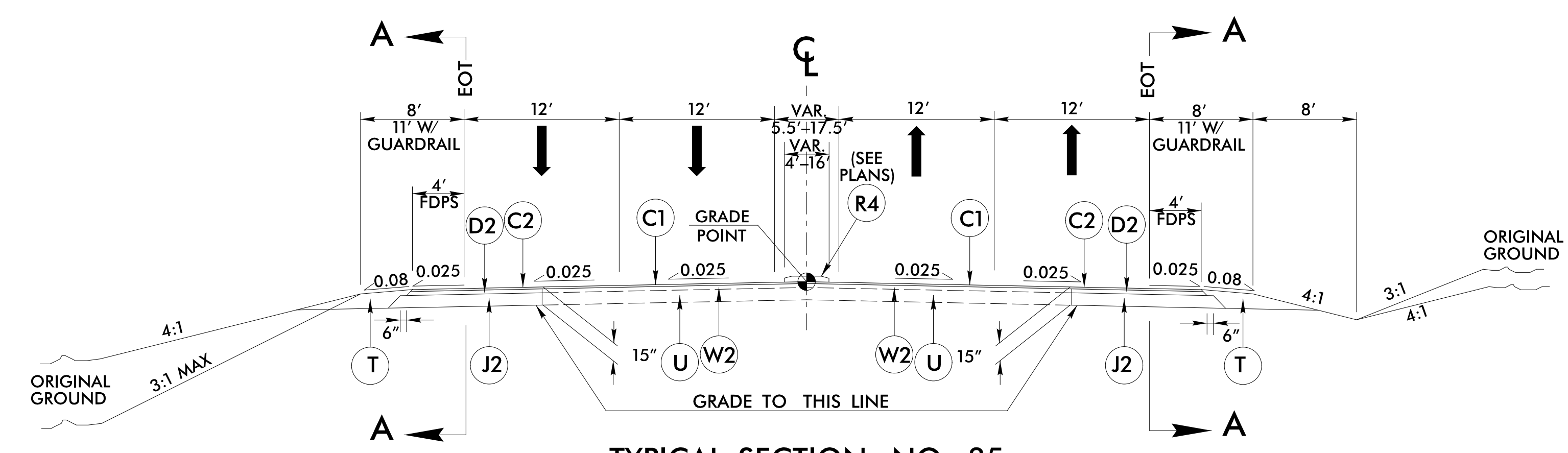
NOTE: PAVEMENT EDGE SLOPES ARE 1:1 UNLESS SHOWN OTHERWISE.



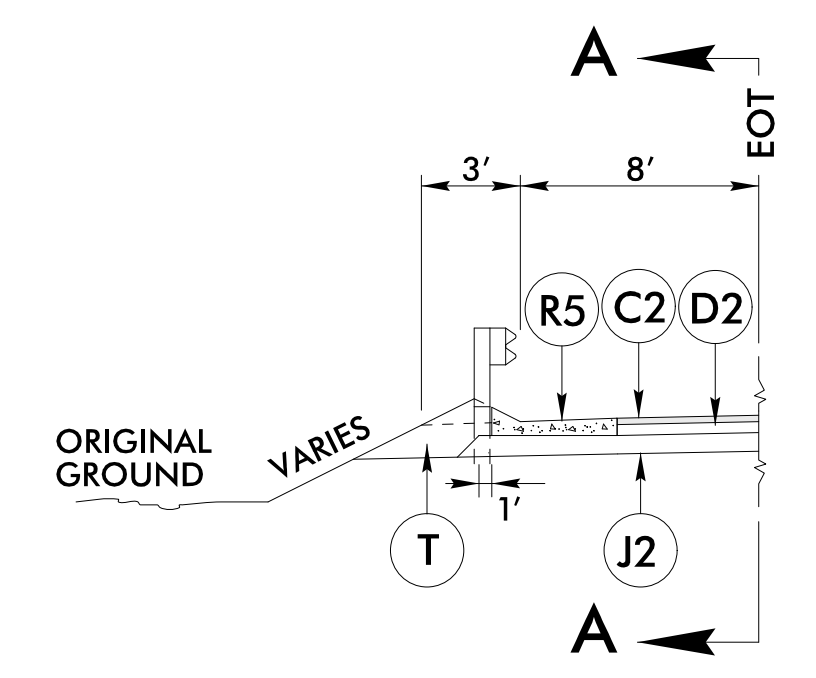
PROJECT REFERENCE NO. R-5021	SHEET NO. 2A-10
ROADWAY DESIGN ENGINEER <i>David S. Wipfler</i> 36786 11/1/2021	PAVEMENT DESIGN ENGINEER <i>Carl S. Morrison</i> 022896 11/2/2021
DOCUMENT NOT CONSIDERED FINAL UNLESS ALL SIGNATURES COMPLETED	



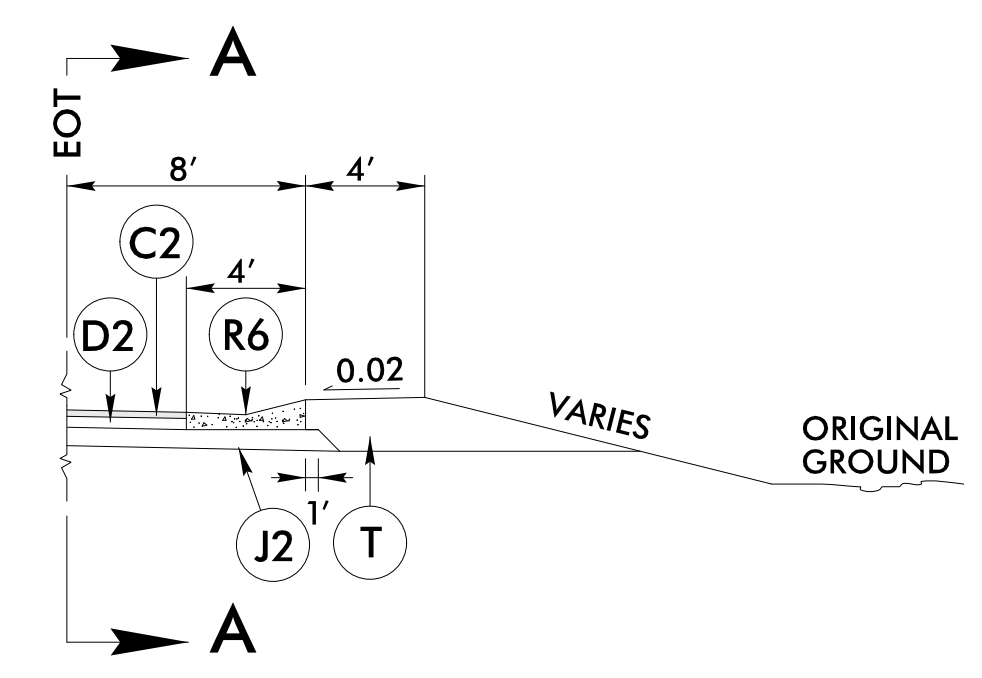
TYPICAL SECTION NO. 34
-Y12- STA. 11+55.00 TO STA. 13+21.07



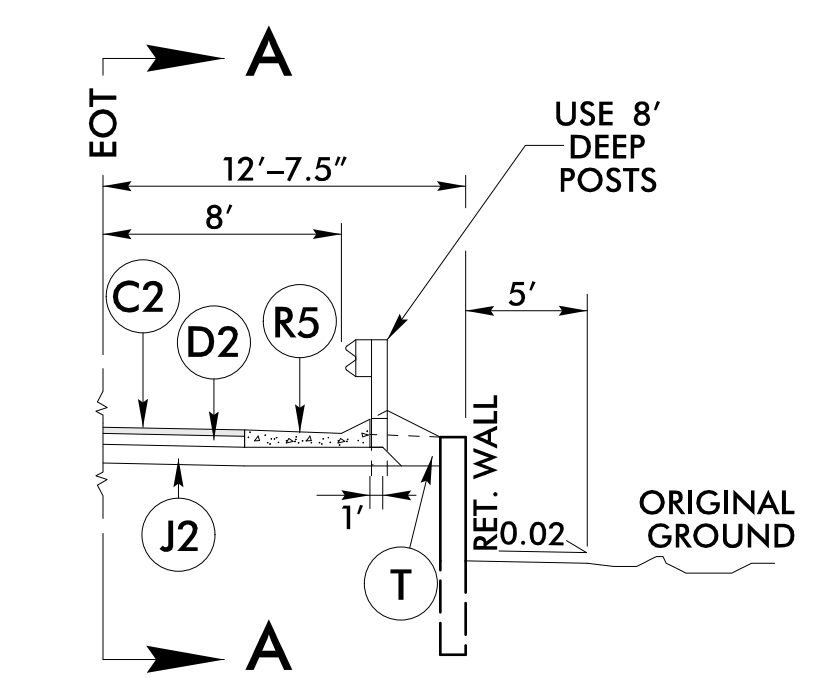
TYPICAL SECTION NO. 35
-Y14A- STA. 27+20.00 TO STA. 38+95.97 (BEG. BRIDGE)
-Y14A- STA. 40+16.47 (END BRIDGE) TO STA. 61+60.00



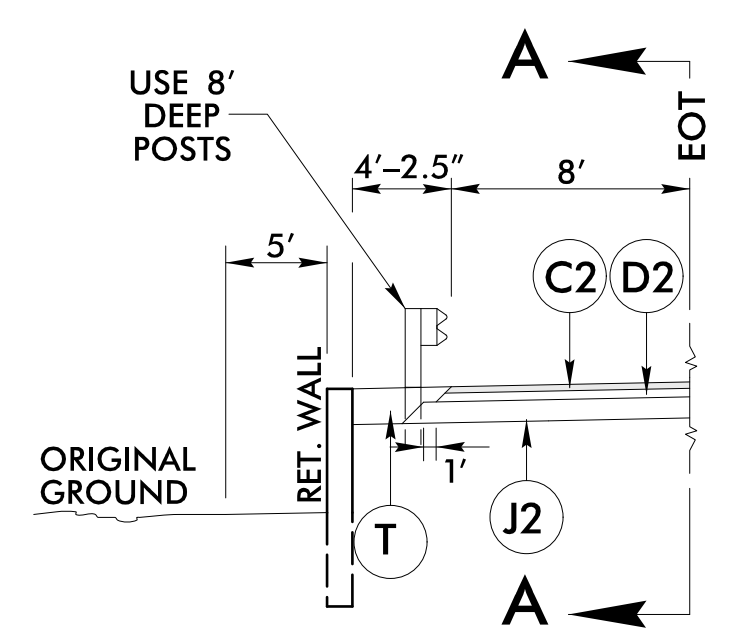
TYPICAL SECTION NO. 35A
SHOULDER BERM GUTTER LOCATIONS
USE TYPICAL SECTION NO. 35A IN CONJUNCTION WITH TYPICAL SECTION NO. 35
-Y14A- STA. 41+11.17 TO STA. 45+00.00 RT
-Y14A- STA. 29+50.00 TO STA. 30+80.42 LT



TYPICAL SECTION NO. 35B
EXPRESSWAY GUTTER LOCATIONS
USE TYPICAL SECTION NO. 35B IN CONJUNCTION WITH TYPICAL SECTION NO. 35
-Y14A- STA. 30+75.05 TO STA. 31+50.02 RT



TYPICAL SECTION NO. 35C
RETAINING WALL WITH SHOULDER BERM GUTTER LOCATIONS
USE TYPICAL SECTION NO. 35C IN CONJUNCTION WITH TYPICAL SECTION NO. 35
-Y14A- STA. 32+44.38 RT TO STA. 38+95.97 (BEG. BRIDGE)
-Y14A- STA. 40+16.47 (END BRIDGE) TO STA. 41+12.43 RT
-Y14A- STA. 36+92.57 LT TO STA. 38+95.97 (BEG. BRIDGE)
-Y14A- STA. 40+16.47 (END BRIDGE) TO STA. 41+45.72 LT
-Y14A- STA. 48+11.39 TO STA. 48+50.47 LT



TYPICAL SECTION NO. 35D
RETAINING WALL LOCATIONS
USE TYPICAL SECTION NO. 35D IN CONJUNCTION WITH TYPICAL SECTION NO. 35
-Y14A- STA. 34+44.58 TO STA. 36+92.57 LT
-Y14A- STA. 41+45.72 TO STA. 47+78.35 LT
-Y14A- STA. 48+50.47 TO STA. 54+55.39 LT

NOTE: SEE PLANS FOR SUPERELEVATIONS, TURN LANES, AUXILIARY LANES, MONOLITHIC ISLANDS, CURB & GUTTER, AND LANE TAPER LOCATIONS.

28-SEP-2021 15:49
\\p01adway\p-coj\15021-RDY-TYP.dgn
HNTB