

6/2/2021

PAVEMENT SCHEDULE
(FINAL PAVEMENT DESIGN)

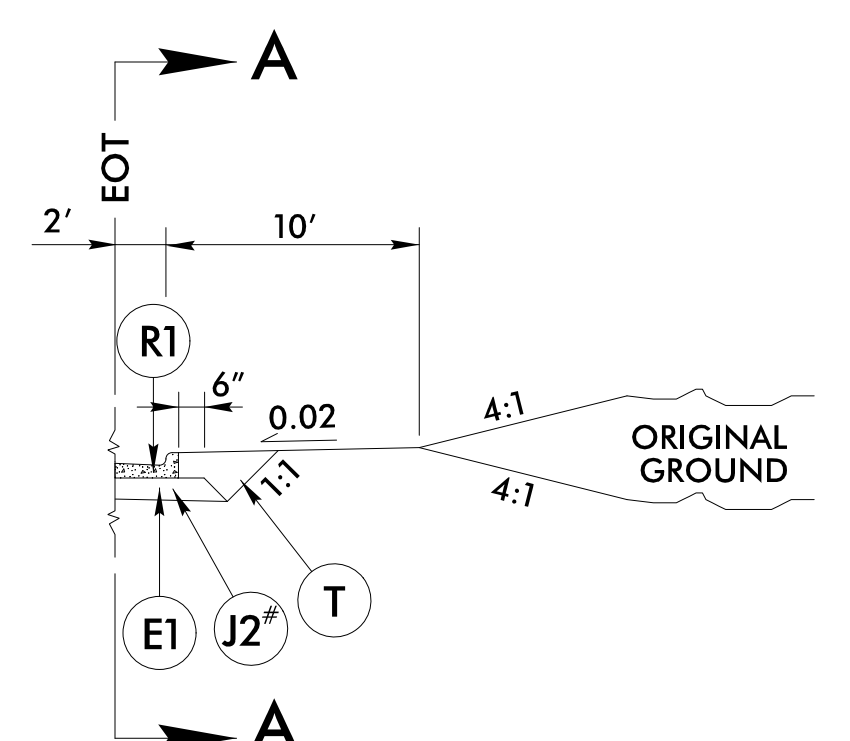
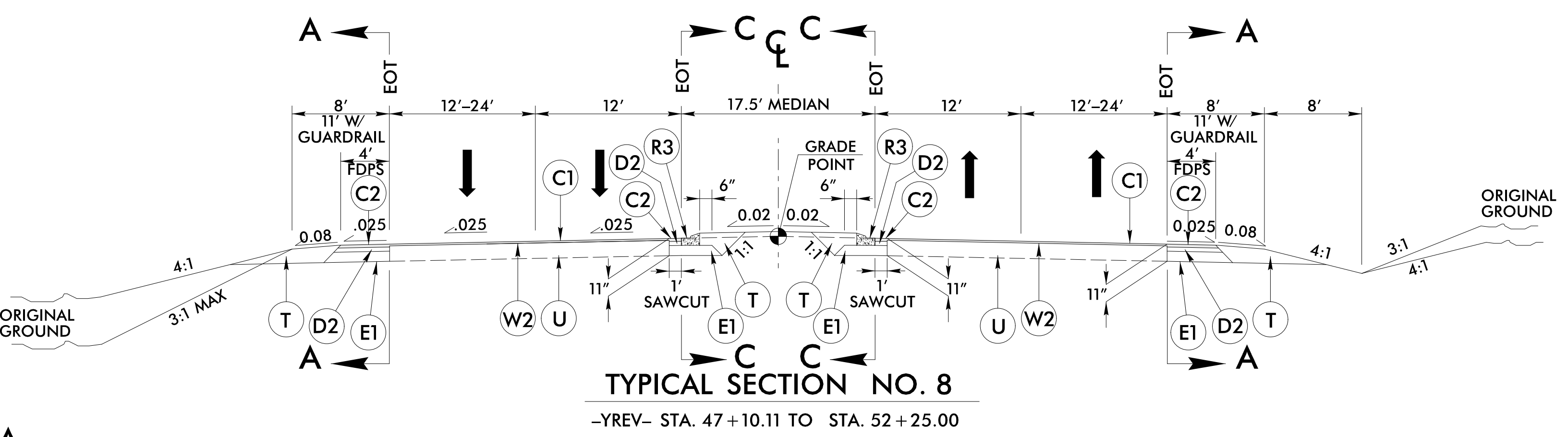
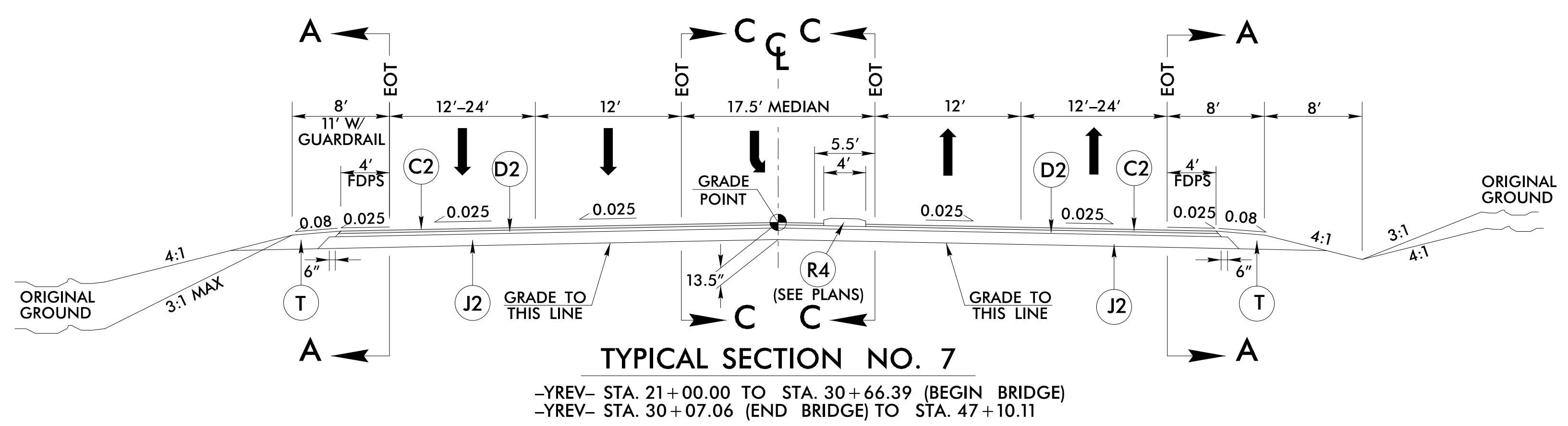
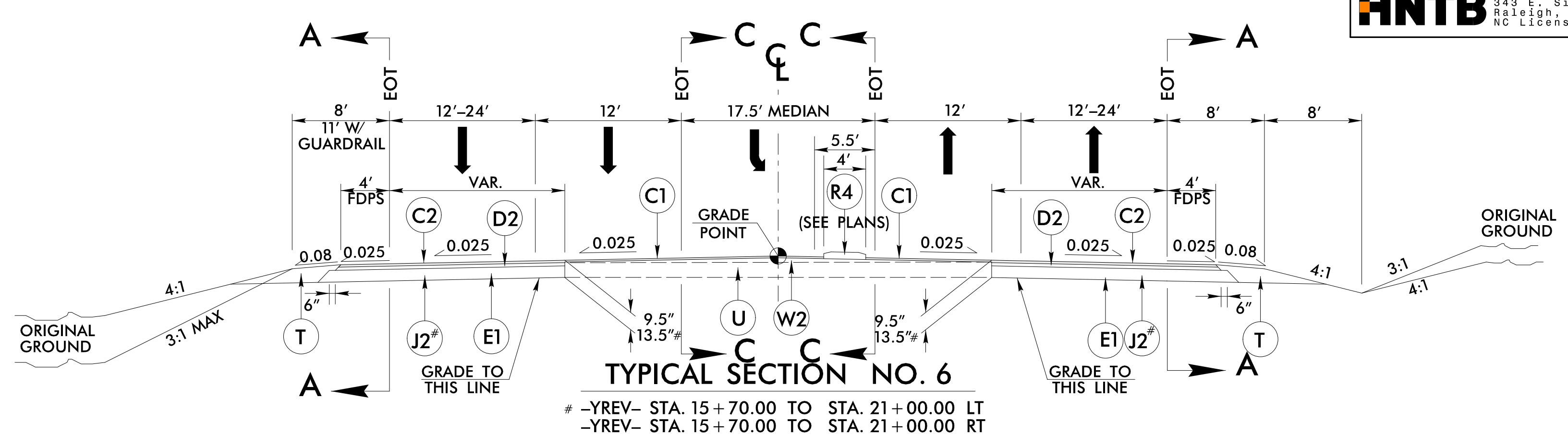
C1	PROP. APPROX. 1.5" ACSC, TYPE S9.5B
C2	PROP. APPROX. 3" ACSC, TYPE S9.5B
C3	PROP. VAR. DEPTH ACSC, TYPE S9.5B
C4	PROP. APPROX. 1.5" ACSC, TYPE S9.5C
C5	PROP. APPROX. 3" ACSC, TYPE S9.5C
C6	PROP. VAR. DEPTH ACSC, TYPE S9.5C
D1	PROP. APPROX. 2.5" ACIC, TYPE I19.0C
D2	PROP. APPROX. 4" ACIC, TYPE I19.0C
D3	PROP. VAR. DEPTH ACIC, TYPE I19.0C
E1	PROP. APPROX. 4" ACBC, TYPE B25.0C
E2	PROP. VAR. DEPTH ACBC, TYPE B25.0C
J1	PROP. 6" ABC
J2	PROP. 8" ABC
J3	VARIABLE DEPTH ABC
K	PROP. 5" CLASS IV AGGREGATE STABILIZATION
P	PRIME COAT
R1	2'-6" CONCRETE CURB AND GUTTER.
R2	2'-9" CONCRETE CURB AND GUTTER.
R3	1'-6" CONCRETE CURB AND GUTTER. (STD MOUNTABLE)
R4	5" MONOLITHIC CONCRETE ISLAND
R5	SHOULDER BERM GUTTER
R6	EXPRESSWAY GUTTER
R7	8"x18" CURB
R8	1'-6" CONCRETE CURB AND GUTTER. (SP 1'PAN-6" GUTTER)
R9	7" JOINTED CONCRETE (WITHOUT DOWELS REINFORCED WITH A W3.5 x W3.5 OR W5 x W5 WIRE MESH)
R10	9"x18" CONCRETE CURB
S1	4" CONCRETE SIDEWALK
T	EARTH MATERIAL
U	EXISTING PAVEMENT.
W1	WEDGING METHOD NO. 1 - SEE SHEET 2A-1
W2	WEDGING METHOD NO. 2 - SEE SHEET 2A-1

NOTE: PAVEMENT EDGE SLOPES ARE 1:1 UNLESS SHOWN OTHERWISE.

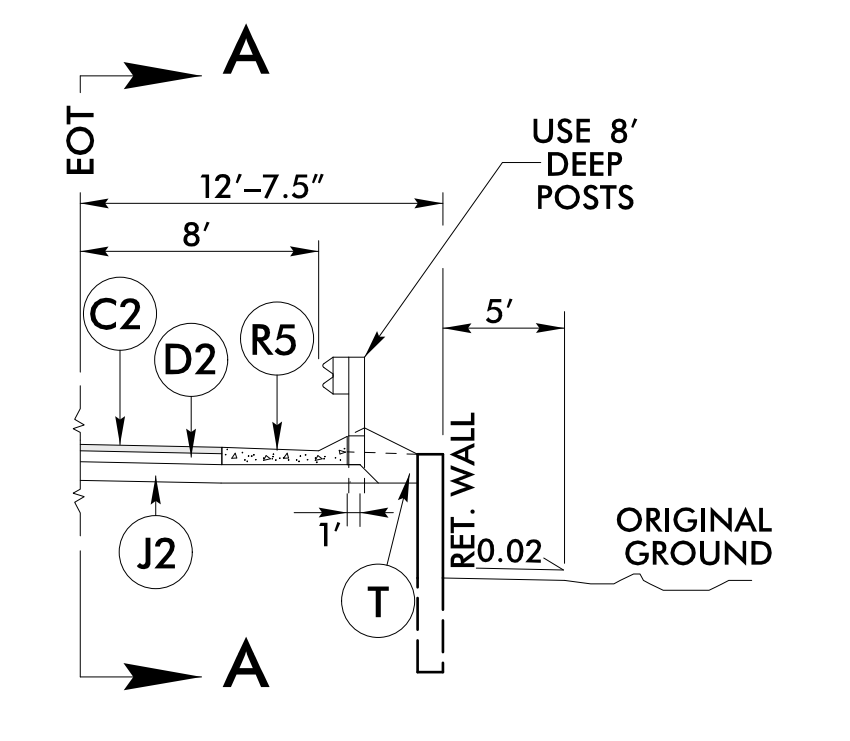
HNTB HNTB NORTH CAROLINA, P.C.
343 E. Six Forks Road, Suite 200
Raleigh, North Carolina 27609
NC License No: C-1524

PROJECT REFERENCE NO. R-5021	SHEET NO. 2A-4
ROADWAY DESIGN ENGINEER <i>Seal Wigney</i> 36786	PAVEMENT DESIGN ENGINEER <i>Carl S. Morrison</i> 022896
11/1/2021	11/2/2021

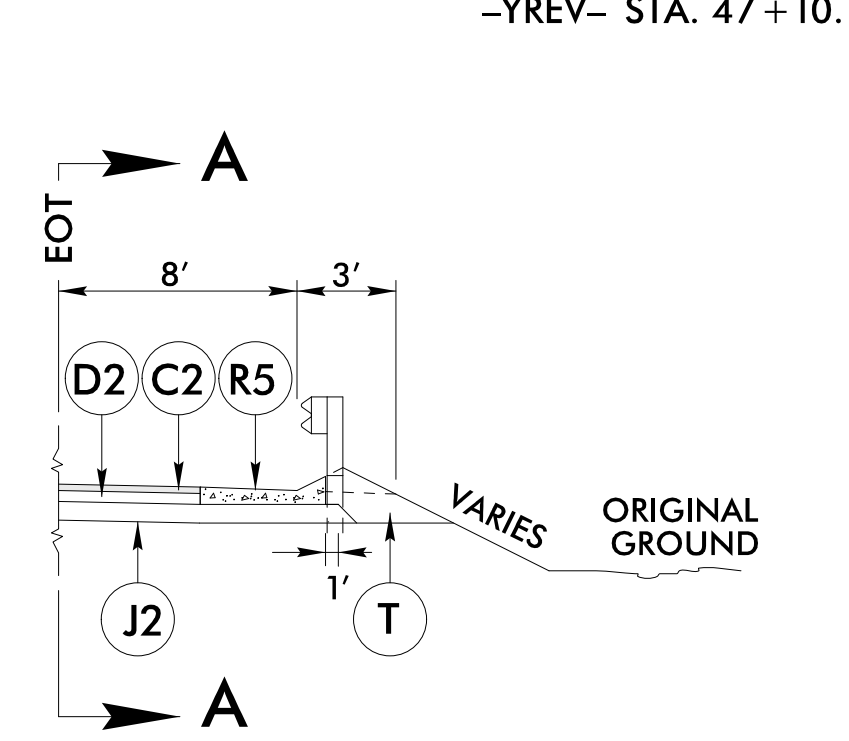
DOCUMENT NOT CONSIDERED FINAL UNLESS ALL SIGNATURES COMPLETED



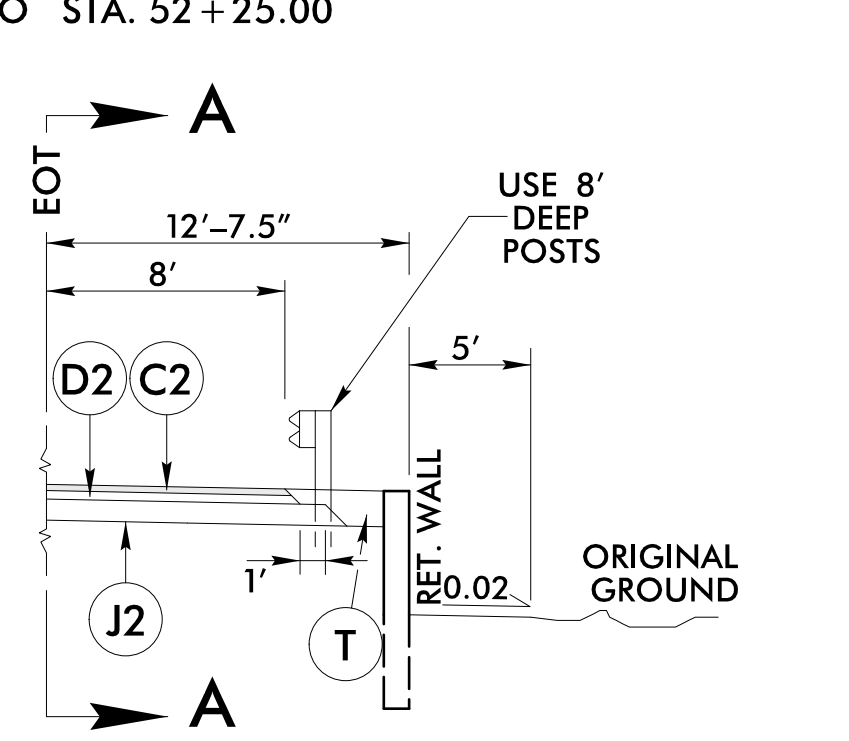
TYPICAL SECTION NO. 6A
2'-6" CURB AND GUTTER LOCATIONS
USE TYPICAL NO. 6A IN CONJUNCTION WITH TYPICAL SECTION NO. 6 & 7
-YREV- STA. 18+53.55 TO STA. 25+50.00 RT



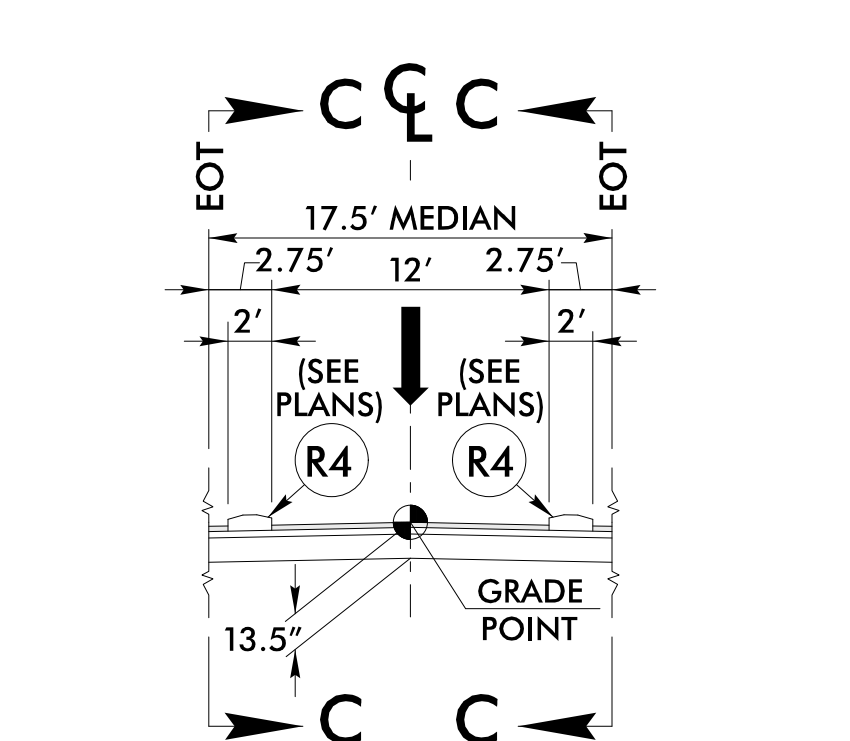
TYPICAL SECTION NO. 7A
RETAINING WALL LOCATIONS
USE TYPICAL NO. 7A IN CONJUNCTION WITH TYPICAL SECTION NO. 7 & 8
-YREV- STA. 29+65.69 TO STA. 30+36.44 RT
-YREV- STA. 32+29.25 TO STA. 33+50.33 RT
-YREV- STA. 37+95.00 TO STA. 47+66.75 LT



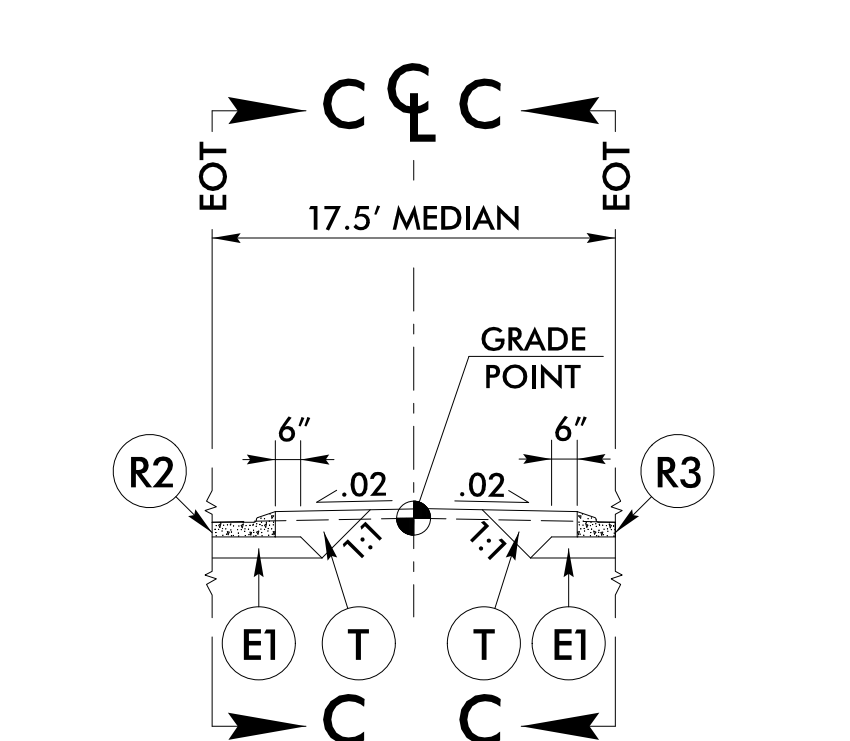
TYPICAL SECTION NO. 7B
SHOULDER BERM GUTTER LOCATIONS
USE TYPICAL NO. 7B IN CONJUNCTION WITH TYPICAL SECTION NO. 7 & 8
-YREV- STA. 25+50.00 TO STA. 29+65.90 RT
-YREV- STA. 32+29.25 TO STA. 36+50.00 RT



TYPICAL SECTION NO. 7C
RETAINING WALL LOCATIONS
USE TYPICAL NO. 7C IN CONJUNCTION WITH TYPICAL SECTION NO. 7 & 8
-YREV- STA. 29+51.83 TO STA. 30+47.72 LT
-YREV- STA. 32+33.10 TO STA. 33+44.60 LT



TYPICAL SECTION NO. 7D
GREEN-T MEDIAN ACCELERATION LANE
USE TYPICAL NO. 7D IN CONJUNCTION WITH TYPICAL SECTION NO. 7
-YREV- STA. 38+42.67 TO STA. 41+41.48



TYPICAL SECTION NO. 8A
MEDIAN CURB TO MATCH EXISTING
USE TYPICAL NO. 8A IN CONJUNCTION WITH TYPICAL SECTION NO. 8
-YREV- STA. 50+00.30 TO STA. 52+25.00

NOTE: SEE PLANS FOR SUPERELEVATIONS, TURN LANES, AUXILIARY LANES, MONOLITHIC ISLANDS, CURB & GUTTER, AND LANE TAPER LOCATIONS.

28-SEP-2021 15:49
C:\oadway\p-coj\RS021-RDY-TYP.dgn
HNTB