



NC DEPARTMENT OF TRANSPORTATION  
 DIVISION OF HIGHWAYS  
 STRUCTURE MANAGEMENT UNIT

ATTENTION: **PRIORITY ACTION REQUEST SUBMITTED  
 DATA CHANGES TO SKETCHES  
 NON NBIS STRUCTURE (NBIS = 18ft)**

# Structure Safety Report

## Routine Element Inspection

INSPECTION DATE: 05/21/2021

DIVISION: 3 COUNTY: BRUNSWICK STRUCTURE NUMBER: 090076 FREQUENCY: 24 MONTHS

FACILITY CARRIED: NC211 MILE POST: \_\_\_\_\_

LOCATION: 2.1 MI N JCT NC133

FEATURE INTERSECTED: BEAVER DAM CREEK

LATITUDE: 33° 57' 39.1" LONGITUDE: 78° 5' 1.59"

SUPERSTRUCTURE: \_\_\_\_\_

SUBSTRUCTURE: \_\_\_\_\_

SPANS: 1 SPAN. SEE SPAN PROFILE SHEET FOR SPAN DETAILS

FRACTURE CRITICAL  TEMPORARY SHORING  SCOUR CRITICAL  SCOUR PLAN OF ACTION

GRADES: (Inspector/NBI Coding) DECK 6/6 SUPERSTRUCTURE 6/6 SUBSTRUCTURE 6/6 CULVERT N/N

POSTED SV: Not Posted POSTED TTST: Not Posted

OTHER SIGNS PRESENT: NONE



LOOKING NORTH

Sign noticed issued for	Number Required
<u>NO</u> WEIGHT LIMIT	<u>0</u>
<u>NO</u> DELINEATORS	<u>0</u>
<u>NO</u> NARROW BRIDGE	<u>0</u>
<u>NO</u> ONE LANE BRIDGE	<u>0</u>
<u>NO</u> LOW CLEARANCE	<u>0</u>

DIRECTION OF INSPECTION S-N

DIRECTION MATCHES PLANS \_\_\_\_\_

INSPECTED BY BRYAN CROOM	SIGNATURE 	ASSISTED BY JASPER BENSON
-----------------------------	---------------	------------------------------

NATIONAL BRIDGE INVENTROY ----- STRUCTURE INVENTORY AND APPRAISAL

07/19/2021

**IDENTIFICATION**

(1) STATE NAME NORTH CAROLINA BRIDGE **090076**  
 (8) STRUCTURE NUMBER (FEDERAL) **0190076**  
 (5) INVENTORY ROUTE (ON/UNDER) ON **131002110**  
 (2) STATE HIGHWAY DEPARTMENT DISTRICT **3**  
 (3) COUNTY CODE (FEDERAL) **19** (4) PLACE CODE **58630**  
 (6) FEATURE INTERSECTED **BEAVER DAM CREEK**  
 (7) FACILITY CARRIED **NC211**  
 (9) LOCATION **2.1 MI N JCT NC133**  
 (11) MILEPOINT **0.0**  
 (12) BASE HIGHWAY NETWORK **0**  
 (13) LRS INVENTORY ROUTE & SUBROUTE  
 (16) LATITUDE **33° 57' 39.1"** (17) LONGITUDE **78° 5' 1.59"**  
 (98) BORDER BRIDGE STATE CODE PERCENT SHARED  
 (99) BORDER BRIDGE STRUCTURE NUMBER

SUFFICIENCY RATING **58.50**  
 STATUS = **Functionally Obsolete**

**CLASSIFICATION** **CODE**

(112) NBIS BRIDGE SYSTEM **NO**  
 (104) HIGHWAY SYSTEM **Inventory Route not on NHS 0**  
 (26) FUNCTIONAL CLASS **Urban Minor Collector 16**  
 (100) STRAHNET HIGHWAY **Not a STRAHNET Route 0**  
 (101) PARALLEL STRUCTURE **No parallel structure exists N**  
 (102) DIRECTION OF TRAFFIC **2-way traffic 2**  
 (103) TEMPORARY STRUCTURE  
 (110) DESIGNATED NATIONAL NETWORK - **on national network for trucks 0**  
 (20) TOLL **On Free Road 3**  
 (21) MAINT - **01**  
 (22) OWNER - **01**  
 (37) HISTORICAL SIGNIFICANCE - **5**

**STRUCTURE TYPE AND MATERIAL**

(43) STRUCTURE TYPE MAIN **Concrete**  
 TYPE **Slab** CODE **101**  
 (44) STRUCTURE TYPE APPROACH  
 TYPE CODE  
 (45) NUMBER OF SPANS IN MAIN UNIT **1**  
 (46) NUMBER OF SPANS IN APPROACH **0**  
 (107) DECK STRUCTURE TYPE CODE **1**  
 (108) WEARING SURFACE/PROTECTIVE SYSTEM  
 (A) TYPE OF WEARING SURFACE CODE **6**  
 (B) TYPE OF MEMBRANE CODE **0**  
 (C) TYPE OF DECK PROTECTION CODE **0**

**CONDITION** **CODE**

(58) DECK **6**  
 (59) SUPERSTRUCTURE **6**  
 (60) SUBSTRUCTURE **6**  
 (61) CHANNEL & CHANNEL PROTECTION **7**  
 (62) CULVERTS **N**

**LOAD RATING AND POSTING** **CODE**

(31) DESIGN LOAD **H 15 2**  
 (63) OPERATING RATING METHOD - **0**  
 (64) OPERATING RATING - **HS-19 35**  
 (65) INVENTORY RATING METHOD - **0**  
 (66) INVENTORY RATING **HS-15 27**  
 (70) BRIDGE POSTING **No Posting Required 5**  
 (41) STRUCTURE OPEN, POSTED, OR CLOSED  
 DESCRIPTION **Open, no restriction A**

**AGE AND SERVICE**

(27) YEAR BUILT **1922**  
 (106) YEAR RECONSTRUCTED **1952**  
 (42) TYPE OF SERVICE ON - **Highway**  
 OFF - **Waterway** CODE **15**  
 (28) LANES ON STRUCTURE **2** LANES UNDER STRUCTURE **0**  
 (29) AVERAGE DAILY TRAFFIC **25000**  
 (30) YEAR OF ADT **2019** (109) TRUCK ADT PCT **6**  
 (19) BYPASS OR DETOUR LENGTH **8.0**

**APPRAISAL** **CODE**

(67) STRUCTURAL EVALUATION **6**  
 (68) DECK GEOMETRY **2**  
 (69) UNDERCLEARANCES, VERT & HORIZ **N**  
 (71) WATERWAY ADEQUACY **6**  
 (72) APPROACH ROADWAY ALIGNMENT **2**  
 (36) TRAFFIC SAFETY FEATURES **0111**  
 (113) SCOUR CRITICAL BRIDGES **U**

**GEOMETRIC DATA**

(48) LENGTH OF MAXIMUM SPAN **19.0**  
 (49) STRUCTURE LENGTH **21.0**  
 (50) CURB OR SIDEWALK: LEFT **1.5** RIGHT **1.5**  
 (51) BRIDGE ROADWAY WIDTH, CURB TO CURB **26.3**  
 (52) DECK WIDTH OUT TO OUT **29.7**  
 (32) APPROACH ROADWAY WITH (W/ SHOULDERS) **26.0**  
 (33) BRIDGE MEDIAN **No median** CODE **0**  
 (34) SKEW **0** (35) STRUCTURE FLARED **0**  
 (10) INVENTORY ROUTE MIN VERT CLEAR **999.9**  
 (47) INVENTORY ROUTE TOTAL HORIZ CLEAR **26.3**  
 (53) MIN VERT CLEAR OVER BRIDGE RDWY **999.9**  
 (54) MIN VERT UNDERCLEAR: REFERENCE **0.0**  
 (55) MIN LAT UNDERCLEARANCE RT: REFERENCE **N 0.0**  
 (56) MIN LAT UNDERCLEARANCE LT: **0.0**

**PROPOSED IMPROVEMENTS**

(75) TYPE OF WORK CODE  
 (76) LENGTH OF STRUCTURE IMPROVEMENT  
 (94) BRIDGE IMPROVEMENT COST  
 (95) ROADWAY IMPROVEMENT COST  
 (96) TOTAL PROJECT COST  
 (97) YEAR OF IMPROVEMENT COST ESTIMATE  
 (114) FUTURE ADT **50,000** YEAR OF FUTURE ADT **2040**

**NAVIGATION DATA**

(38) NAVIGATION CONTROL - CODE **0**  
 (111) PIER PROTECTION CODE  
 (39) NAVIGATION VERTICAL CLEARANCE **0.0**  
 (116) VERT - LIFT BRIDGE NAV MIN VERT CLEAR **0.0**  
 (40) NAVIGATION HORIZONTAL CLEARANCE **0.0**

**INSPECTION**

(90) INSPECTION DATE **05/21** (91) FREQUENCY **24**  
 (92) CRITICAL FEATURE INSPECTION (93) CFI DATE  
 A) FRACTURE CRIT DETAIL A)  
 B) UNDERWATER INSP **60** B) **05/19**  
 C) OTHER SPECIAL INSP C)  
 SCOUR

## Superstructure Build Details

Span Number 1

Span Length 21.2500

Skew 90.0000

Number of Items	Type of Component	Element Name	Quantity	Protective System Applied	Quantity (Sq Ft)
2	Concrete Railing	Reinforced Concrete Bridge Railing	40 Feet		
1	Asphalt Wearing Surface	Wearing Surface	559 Square Feet		
1	Reinforced Concrete Deck Slab	Reinforced Concrete Slabs	632 Square Feet		

# Structure Element Scoring

Structure Number: 090076

Inspection Date 5/21/2021

Element Number	Parent Number	Element Name	Location	Total Quantity	Level 1 Quantity	Level 2 Quantity	Level 3 Quantity	Level 4 Quantity
38	0	Reinforced Concrete Slabs	Deck	632	279	301	52	0
215	0	Reinforced Concrete Abutment	Abutments	60	2	57	1	0
331	0	Reinforced Concrete Bridge Railing	Bridge Rail	40	6	20	14	0
510	0	Wearing Surface	Wearing Surfaces	559	292	0	267	0

# Summary of Maintenance Needs

## Maintenance By Defect

Structure Number: **090076**

Inspection Date: **05/21/2021**

<b>MMS Code</b>	<b>Element Name</b>	<b>Defect Name</b>	<b>Recommended Quantity</b>
3326	Reinforced Concrete Slabs	Delamination/Spall	3 Square Feet
3326	Reinforced Concrete Slabs	Cracking (RC and Other)	350 Square Feet
3350	Reinforced Concrete Abutment	Cracking (RC and Other)	3 Feet
3350	Reinforced Concrete Abutment	Delamination/Spall	1 Feet
3318	Reinforced Concrete Bridge Railing	Damage	40 Feet
3318	Reinforced Concrete Bridge Railing	Delamination/Spall	3 Feet
3318	Reinforced Concrete Bridge Railing	Cracking (RC and Other)	13 Feet
2816	Wearing Surface	Crack (Wearing Surface)	61 Square Feet
2816	Wearing Surface	Effectiveness (Wearing Surface)	200 Square Feet
2816	Wearing Surface	Delamination/Spall (Wearing Surfaces)	6 Square Feet

## Element Structure Maintenance Quantities

Structure Number: 090076

Inspection Date 05/21/2021

Location	MMS Code	Description	Maint Quantity	Total Quantity	Severe Quantity	Poor Quantity	Fair Quantity	Good Quantity
Abutments	3350	Maintenance of Concrete Wings and Wall	4	60	0	1	57	2
Bridge Rail	3318	Maintenance of Concrete Bridge Rail	56	40	0	14	20	6
Deck	3326	Maintenance of Concrete Deck	353	632	0	52	301	279
Wearing Surfaces	2816	Asphalt Surface Repair	267	559	0	267	0	292

# Priority Actions Request

Structure Number 090076

## Approach Guardrail and Barriers

3120      Approach  
Guardrail and  
Barriers      Approach Guardrail and Barriers

Priority Level	Defect Type	Quantity	Defect Description
2		25	NORTHEAST APPROACH RAIL DAMAGED ( 25' LONG ) 40' FROM END BENT 2 ( PRIORITY ACTION REQUEST SUBMITTED )
2		25	NORTHEAST APPROACH RAIL DAMAGED ( 25' LONG ) 75' FROM END BENT 2 ( PRIORITY ACTION REQUEST SUBMITTED )
2		1	NORTHWEST GUARDRAIL POST DAMAGED ( 25' FROM END BENT 2 ) ( PRIORITY ACTION REQUEST SUBMITTED )

## Element Condition and Maintenance Data

Structure Number: 090076

Inspection Date: 05/21/2021

### Span 1 Deck

#### Reinforced Concrete Deck Slab

Element Number	Element Name	Total Qty	CS1 Qty	CS2 Qty	CS3 Qty	CS4 Qty
38	Reinforced Concrete Slabs	632	279	301	52	0 Square Feet

Element Number	Defect Type	Defect Description	CS	CS Qty	Maint Qty
38	Cracking (RC and Other)	SCATTERED LONGITUDINAL CRACKING / MAP CRACKING ALONG UNDERSIDE OF DECK	3	50	50 Square Feet
38	Delamination/Spall	2 ( 2" ) SPALLED AREAS IN UNDERSIDE ( 6' FROM EAST SIDE )	3	1	1 Square Feet
38	Delamination/Spall	2 ( 2" ) SPALLED AREAS IN UNDERSIDE ( 6' FROM WEST SIDE )	3	1	1 Square Feet
38	Cracking (RC and Other)	MAP CRACKING ALONG EXTERIOR SIDES OF DECK UP TO .025" WIDE	2	300	300 Square Feet
38	Delamination/Spall	SHALLOW SPALL/DELAMINATION ( 6" DIAMETER ) TO UNDERSIDE AT NORTH END WEST SIDE BETWEEN SOUND PATCHES	2	1	1 Square Feet
38	Patched Area	2 SOUND PATCHES TO UNDERSIDE AT NORTH END WEST SIDE	1	8	Square Feet

**General Comments**

### Span 1 Wearing Surface

#### Asphalt Wearing Surface

Element Number	Element Name	Total Qty	CS1 Qty	CS2 Qty	CS3 Qty	CS4 Qty
510	Wearing Surface	559	292	0	267	0 Square Feet

Element Number	Defect Type	Defect Description	CS	CS Qty	Maint Qty
510	Crack (Wearing Surface)	LONGIDUTINAL CRACKING (1" WIDE ) IN RIGHT LANE	3	21	21 Square Feet
510	Crack (Wearing Surface)	TRANSVERSE CRACKING IN ASPHALT WEARING SURFACE (.250" WIDE) OVER END BENT 1	3	20	20 Square Feet
510	Crack (Wearing Surface)	TRANSVERSE CRACKING IN ASPHALT WEARING SURFACE (.250" WIDE) OVER END BENT 2	3	20	20 Square Feet
510	Delamination/Spall (Wearing Surfaces)	SPALL (6' LONG X 1' WIDE X .5" DEEP ) AT CENTERLINE AT NORTH END.	3	6	6 Square Feet
510	Effectiveness (Wearing Surface)	ASPHALT WEARING SURFACE SETTLED @ SOUTH END UP TO ( .5" TO 1" )	3	200	200 Square Feet

**General Comments**

NEAR AND FAR ENDS PAVED SINCE LAST INSPECTION

### Span 1 Left Bridge Rail

#### Concrete Railing

Element Number	Element Name	Total Qty	CS1 Qty	CS2 Qty	CS3 Qty	CS4 Qty
331	Reinforced Concrete Bridge Railing	20	5	10	5	0 Feet

Element Number	Defect Type	Defect Description	CS	CS Qty	Maint Qty
331	Cracking (RC and Other)	SCATTERED CRACKING IN CURBS (.062" WIDE)	3	5	5 Feet
331	Damage	MODERATE WEAR WITH EXPOSED AGGREGATE THROUGHOUT	2	9	20 Feet



331 Delamination/Spall SPALLED AREA (8" LONG X 5" WIDE X 1" HIGH) IN THE TOP PORTION OF THE SOUTHEAST RAIL POST 2 1 1 Feet

**General Comments**

**Span 1 Right Bridge Rail**  
**Concrete Railing**

Element Number	Element Name	Total Qty	CS1 Qty	CS2 Qty	CS3 Qty	CS4 Qty
331	Reinforced Concrete Bridge Railing	20	1	10	9	0 Feet

Element Number	Defect Type	Defect Description	CS	CS Qty	Maint Qty
331	Cracking (RC and Other)	SCATTERED CRACKING IN CURBS (.062" WIDE)	3	8	8 Feet
331	Delamination/Spall	SPALLED AREA ( 3" LONG X 5" WIDE X 5" HIGH ) NO EXPOSED REBAR IN POST # 1 EXTERIOR SIDE AT LOWER PORTION	3	1	1 Feet
331	Damage	MODERATE WEAR WITH EXPOSED AGGREGATE THROUGHOUT	2	9	20 Feet
331	Delamination/Spall	SPALLED AREA (6" LONG X 3" WIDE X 1" HIGH) THE TOP PORTION OF THE SOUTHWEST RAIL POST.	2	1	1 Feet

**General Comments**

**End Bent 1 Abutment**  
**Reinforced Concrete Abutment**

Element Number	Element Name	Total Qty	CS1 Qty	CS2 Qty	CS3 Qty	CS4 Qty
215	Reinforced Concrete Abutment	30	1	28	1	0 Feet

Element Number	Defect Type	Defect Description	CS	CS Qty	Maint Qty
215	Delamination/Spall	SPALLED AREA ( 1' LONG X 4" WIDE X 1" HIGH ) WITH NO EXPOSED REBAR AT EAST END TOP PORTION	3	1	1 Feet
215	Abrasion/Wear (PSC/RC)	LOWER PORTION OF ABUTMENTS WORN WITH EXPOSED AGGREGATE	2	15	Feet
215	Abrasion/Wear (PSC/RC)	UNDERWATER 5/29/19 COARSE AGGREGATE EXPOSED TO 3/8" AT LOWER PORTION	2		Feet
215	Cracking (RC and Other)	HORIZONTAL CRACKING (HAIRLINE TO 1/32IN) AND MAP CRACKING AT WEST AND EAST ENDS.	2	10	Feet
215	Cracking (RC and Other)	HAIRLINE VERTICAL CRACKING	2	3	3 Feet

**General Comments**

**End Bent 2 Abutment**  
**Reinforced Concrete Abutment**

Element Number	Element Name	Total Qty	CS1 Qty	CS2 Qty	CS3 Qty	CS4 Qty
215	Reinforced Concrete Abutment	30	1	29	0	0 Feet

Element Number	Defect Type	Defect Description	CS	CS Qty	Maint Qty
215	Abrasion/Wear (PSC/RC)	LOWER PORTION OF ABUTMENTS WORN WITH EXPOSED AGGREGATE	2	16	Feet
215	Abrasion/Wear (PSC/RC)	UNDERWATER 5/29/19 COARSE AGGREGATE EXPOSED TO 3/8" AT LOWER PORTION	2		Feet
215	Cracking (RC and Other)	HORIZONTAL CRACKING (HAIRLINE TO 1/32IN) AND MAP CRACKING AT WEST AND EAST ENDS.	2	10	Feet
215	Cracking (RC and Other)	HAIRLINE VERTICAL CRACKING	2	3	Feet

---

**General Comments**

## Elements Verified

<b>Location</b>	<b>Name</b>	<b>Component</b>	<b>Element Name</b>	<b>Amount</b>
Span 1	Deck	Reinforced Concrete Deck Slab	Reinforced Concrete Slabs	632
Span 1	Left Bridge Rail	Concrete Railing	Reinforced Concrete Bridge Railing	20
Span 1	Right Bridge Rail	Concrete Railing	Reinforced Concrete Bridge Railing	20
Span 1	Wearing Surface	Asphalt Wearing Surface	Wearing Surface	559
End Bent 1	Abutment	Reinforced Concrete Abutment	Reinforced Concrete Abutment	30
End Bent 2	Abutment	Reinforced Concrete Abutment	Reinforced Concrete Abutment	30

---

# General Inspection Notes

# National Bridge and NC Inspection Items

Structure Number: 090076

Inspection Date: 05/21/2021

## National Bridge Inventory Items

Item	Grade Scale	Grade
Item 58: Deck	0 - 9, N	6
Item 59: Superstructure	0 - 9, N	6
Item 60: Substructure	0 - 9, N	6
Item 61: Channel and Channel Protection	0 - 9, N	7
Item 62: Culvert	0 - 9, N	N
Item 71: Waterway Adequacy	0 - 9, N	7
Item 72: Approach Roadway Alignment	0 - 9, N	8

Note: If NBI Inspection Item is not present, code NBI item with "N"

## NC SMU Inspection Items

Item	Grade Scale	Grade	Maint. Qty.	Maint. Code
Deck Debris	G, F, P, or C	F	560	3376
Drainage System	G, F, P, or C	F	240	3332
Utilities	G, F, P, or C			
Slope Protection	G, F, P, or C		0	3352
Scour	G, F, P, or C	G		
Wingwall	G, F, P, or C	F	50	3350
Field Scour Evaluation		G		
Drift	G, F, P, or C	G	0	3366
Fender System	G, F, P, or C		0	3364
Movable Span Machinery	G, F, P, or C			
Response to Live Load	G, F, P, or C	G		
Superstructure Paint Code				

Note: If NC SMU Inspection Item is not present, leave NC SMU item blank

## Inspection Information

Item	Grade Scale	Grade
Sign Noticed Issued	YES/NO	N
Priority Maintenance Request Submitted	YES/NO	Y
Inspection Time	Hours	8
Traffic Control Time	Hours	
Snooper Time	Hours	
Ladder Used	YES/NO	N
Bucket Truck Used	YES/NO	N
Boat Used	YES/NO	Y
Other Equipment Used	YES/NO	N
Portion of Structure in > 3' of water	YES/NO	Y

# National Bridge and NC SMU Inspection Item Details

Structure Number: 090076

Inspection Date: 05/21/2021

<b>Item</b>	Presently Posted	<b>Grade</b>	N	<b>Maint Code</b>		<b>Qty.</b>	0
<b>Details</b>	NOT POSTED						
<b>Item</b>	Deck Debris	<b>Grade</b>	F	<b>Maint Code</b>	3376	<b>Qty.</b>	560
<b>Details</b>	GROWTH AND DEBRIS ALONG WEST AND EAST RAILS BLOCKING DRAINS						
<b>Item</b>	Drainage System	<b>Grade</b>	F	<b>Maint Code</b>	3332	<b>Qty.</b>	240
<b>Details</b>	EROSION ( 8' LONG X 10' WIDE X 1.5' DEEP ) @ SOUTHWEST APPROACH CORNER DRAIN EROSION ( 8" LONG X 10' WIDE 1' TO 1.5' DEEP ) AT SOUTHEAST CORNER WING WALL GROWTH AND DEBRIS ALONG WEST AND EAST RAILS BLOCKING DRAINS SINK HOLE ( 2' DIAMETER 1' DEEP ) BEHIND SOUTHWEST WING WALL						
<b>Item</b>	Wingwalls	<b>Grade</b>	F	<b>Maint Code</b>	3350	<b>Qty.</b>	50
<b>Details</b>	DECAY IN TOP PORTION OF VERTICAL WING WALL BOARDS ( 4" HIGH ) NORTHWEST WING PILE #2 DECAYED ( 1/2 CIRCUMFERENCE X 6" HIGH ) NORTHEAST WING PILE #2 DECAYED ( 1/2 CIRCUMFERENCE X 6" HIGH )						
<b>Item</b>	General Comments and Misc Items	<b>Grade</b>	F	<b>Maint Code</b>		<b>Qty.</b>	0
<b>Details</b>	SPALL AREA ( 6" LONG X 4" WIDE X 4 " HIGH ) IN EAST CURB AT SOUTH END WITH NO EXPOSED REBAR MAP CRACKING ( .020" WIDE ) WITH EFFLORESCENCE IN WEST AND EAST ENDS OF SOUTH AND NORTH ABUTMENTS SPALL AREA ( 4" LONG X 6" WIDE X 4 " HIGH ) IN WEST CURB AT NORTH END WITH NO EXPOSED REBAR NORTHEAST APPROACH RAIL DAMAGED ( 25' LONG ) 75' FROM END BENT 2 ( PRIORITY ACTION REQUEST SUBMITTED ) NORTHEAST APPROACH RAIL DAMAGED ( 25' LONG ) 40' FROM END BENT 2 ( PRIORITY ACTION REQUEST SUBMITTED ) NORTHWEST GUARDRAIL POST DAMAGED ( 25' FROM END BENT 2 ) ( PRIORITY ACTION REQUEST SUBMITTED )						
<b>Item</b>	Portion of structure in > 3' of water (Y or N)	<b>Grade</b>	Y	<b>Maint Code</b>		<b>Qty.</b>	0
<b>Details</b>	SOUTH ABUTMENT						



EROSION ( 8' LONG X 10' WIDE X 1.5' DEEP ) @ SOUTHWEST APPROACH CORNER DRAIN



ASPHALT WEARING SURFACE SETTLED @ SOUTH END UP TO ( .5" TO 1" )



TRANSVERSE CRACKING IN ASPHALT WEARING SURFACE (.250" WIDE) OVER END BENT 1



Span 1 Left Bridge Rail: SPALLED AREA (8" LONG X 5" WIDE X 1" HIGH) IN THE TOP PORTION OF THE SOUTHEAST RAIL POST





Span 1 Right Bridge Rail: SPALLED AREA (6" LONG X 3" WIDE X 1" HIGH) THE TOP PORTION OF THE SOUTHWEST RAIL POST.



End Bent 1 Abutment: SPALLED AREA ( 1' LONG X 4" WIDE X 1" HIGH ) WITH NO EXPOSED REBAR AT EAST END TOP PORTION



SPALL AREA ( 6" LONG X 4" WIDE X 4 " HIGH ) IN EAST CURB AT SOUTH END WITH NO EXPOSED REBAR



EROSION ( 8" LONG X 10' WIDE 1' TO 1.5' DEEP ) AT SOUTHEAST CORNER WING WALL



Span 1 Right Rail: SPALLED AREA ( 3" LONG X 5" WIDE X 5" HIGH ) NO EXPOSED REBAR IN POST # 1 EXTERIOR SIDE AT LOWER PORTION



MAP CRACKING ( .020" WIDE ) WITH EFFLORESCENCE IN WEST AND EAST ENDS OF SOUTH AND NORTH ABUTMENTS ( EAST END OF SOUTH ABUTMENT SHOWN )



Span 1 Deck: MAP CRACKING ALONG EXTERIOR SIDES OF DECK UP TO .025" WIDE



End Bent 1 Abutment: LOWER PORTION OF ABUTMENTS WORN WITH EXPOSED AGGREGATE



End Bent 2 Abutment: LOWER PORTION OF ABUTMENTS WORN WITH EXPOSED AGGREGATE



TRANSVERSE CRACKING IN ASPHALT WEARING SURFACE (.250" WIDE) OVER END BENT 2



NORTHEAST APPROACH RAIL DAMAGED ( 25' LONG ) 75' FROM END BENT 2 ( PRIORITY ACTION REQUEST SUBMITTED )



NORTHEAST APPROACH RAIL DAMAGED ( 25' LONG ) 40' FROM END BENT 2 ( PRIORITY ACTION REQUEST SUBMITTED )



MODERATE WEAR WITH EXPOSED AGGREGATE THROUGHOUT WEST AND EAST RAILS



SPALL AREA ( 4" LONG X 6" WIDE X 4" HIGH ) IN WEST CURB AT NORTH END WITH NO EXPOSED REBAR



Wearing Surface: LONGIDUTINAL CRACKING (1" WIDE ) IN RIGHT LANE



Span 1 Wearing Surface: SPALL (6' LONG X 1' WIDE X .5" DEEP ) AT CENTERLINE AT NORTH END.





GROWTH AND DEBRIS ALONG WEST AND EAST RAILS BLOCKING DRAINS



DECAY IN TOP PORTION OF VERTICAL WING WALL BOARDS ( 4" HIGH ) ( SOUTHEAST CORNER SHOWN )



SCATTERED LONGITUDINAL CRACKING / MAP CRACKING ALONG UNDERSIDE OF DECK



2 SOUND PATCHES TO UNDERSIDE AT NORTH END WEST SIDE



Span 1 Deck: 2 ( 2" ) SPALLED AREAS IN UNDERSIDE ( 6' FROM WEST SIDE )



Span 1 Deck: 2 ( 2" ) SPALLED AREAS IN UNDERSIDE ( 6' FROM EAST SIDE )



End Bent 2 Abutment: HAIRLINE VERTICAL CRACKING



End Bent 1 Abutment: HAIRLINE VERTICAL CRACKING



SINK HOLE ( 2' DIAMETER 1' DEEP ) BEHIND SOUTHWEST WING WALL



Span 1 Left Bridge Rail: SCATTERED CRACKING IN CURBS (.062" WIDE)



NORTHWEST WING PILE #2 DECAYED ( 1/2 CIRCUMFERENCE X 6" HIGH )



NORTHWEST GUARDRAIL POST DAMAGED ( 25' FROM END BENT 2 ) ( PRIORITY ACTION REQUEST SUBMITTED )



NORTHEAST WING PILE #2 DECAYED ( 1/2 CIRCUMFERENCE X 6" HIGH )



HORIZONTAL CRACKING (HAIRLINE TO 1/32IN) AND MAP CRACKING AT WEST AND EAST ENDS OF SOUTH AND NORTH ABUTMENTS ( NORTH ABUTMENT EAST END SHOWN )



Span 1 Deck: SHALLOW SPALL/DELAMINATION ( 6" DIAMETER ) TO UNDERSIDE AT NORTH END WEST SIDE  
BETWEEN SOUND PATCHES



# Stream Bed Soundings

(Profile diagram on following sheet)

County **BRUNSWICK**

Structure Number: **090076**

Inspection Date **05/24/2021**

Sounding recorded from: **Top of Bridge Rail**

Highwater Mark Distance

Location of Highwater Mark

Distance (Station) ft.	Downstream Sounding ft.	Upstream Sounding ft.	Description
0.000	2.100	0.000	TOP OF BACK WALL
1.625	2.100	0.000	TOP OF BACK WALL
1.626	4.700	0.000	BRIDGE SEAT
1.627	11.000	0.000	WSWE
1.628	13.700	14.700	GROUND AT CAP
7.000	15.400	0.000	
14.000	14.800	0.000	
19.622	13.300	11.300	GROUND AT CAP
19.623	11.000	0.000	WSWE
19.624	4.700	0.000	BRIDGE SEAT
19.625	2.100	0.000	TOP OF BACK WALL
21.250	2.100	0.000	TOP OF BACK WALL

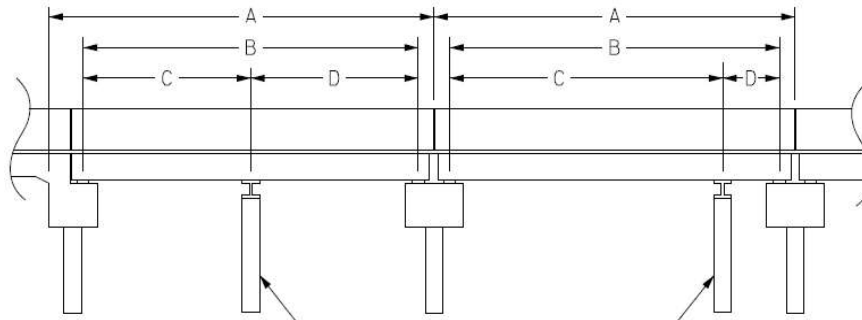


# Structure Data Worksheet

## Span Profile

County: **BRUNSWICK**

Structure Number: **090076**



A: SPAN LENGTH  
 B: BEARING TO BEARING  
 C: DISTANCE FROM NEAR BEARING  
 D: DISTANCE TO FAR BEARING

Span Number	Span Length	Bearing to Bearing	Crutch/ Helper Bent	Distance to Near Bearing	Distance to Far Bearing
1	21.250	19.250			



SOUTHWEST GUARDRAIL END TERMINAL ( SOUTHEAST , NORTHWEST SIMILAR )



LOOKING NORTH



SIMILAR GUARDRAIL CONNECTION ( SOUTHWEST SHOWN )



SIMILAR GUARDRAIL POST SPACES ( SOUTHWEST SHOWN )



DOWNSTREAM WEST



LOOKING NORTH OFF STRUCTURE



LOOKING SOUTH OFF STRUCTURE



UPSTREAM EAST



EAST SIDE



END BENT 1





SPAN 1 UNDERSIDE



LOOKING SOUTH



NORTHEAST GUARDRAIL END TERMINAL



WEST SIDE



BOAT



END BENT 2




# BRIDGE INSPECTOR'S RECOMMENDATION FOR MAINTENANCE REPAIRS

Bridge: 090076

County BRUNSWICK

Date:


**These Repairs Should Be Made Within Twelve Months From Date Of This Inspection**

MMS Code	Description of Function	Unit	Quantity	Remarks	Est. Cost
 3120	Repair/Maintain Barriers	LF	25	NORTHEAST APPROACH RAIL DAMAGED ( 25' LONG ) 40' FROM END BENT 2 ( PRIORITY ACTION REQUEST SUBMITTED )	
 3120	Repair/Maintain Barriers	LF	25	NORTHEAST APPROACH RAIL DAMAGED ( 25' LONG ) 75' FROM END BENT 2 ( PRIORITY ACTION REQUEST SUBMITTED )	
 3120	Repair/Maintain Barriers	LF	1	NORTHWEST GUARDRAIL POST DAMAGED ( 25' FROM END BENT 2 ) ( PRIORITY ACTION REQUEST SUBMITTED )	

**Key**

 Priority Maintenance Item

 Critical Finding Item

 Priority Maintenance Level Not Determined

## BRIDGE INSPECTOR'S RECOMMENDATION FOR PRIORITY MAINTENANCE REPAIRS

Bridge: 090076

County BRUNSWICK

THE FOLLOWING MAINTENANCE ITEMS HAVE BEEN SUBMITTED IN CONJUNCTION WITH A PRIORITY MAINTENANCE REQUEST

MMS Code	MMS Description	Quantity
3120	Repair/Maintain Barriers	25 LF
Location:		
Bent/Span No.		
Priority Level	Status	
	Request Awaiting Assignment	
Submitted Date:	Submitted By:	Assisted By:
05/25/2021	BRYAN CROOM	
Details		
NORTHEAST APPROACH RAIL DAMAGED ( 25' LONG ) 40' FROM END BENT 2 ( PRIORITY ACTION REQUEST SUBMITTED )		

MMS Code	MMS Description	Quantity
3120	Repair/Maintain Barriers	25 LF
Location:		
Bent/Span No.		
Priority Level	Status	
	Request Awaiting Assignment	
Submitted Date:	Submitted By:	Assisted By:
05/25/2021	BRYAN CROOM	
Details		
NORTHEAST APPROACH RAIL DAMAGED ( 25' LONG ) 75' FROM END BENT 2 ( PRIORITY ACTION REQUEST SUBMITTED )		

**BRIDGE INSPECTOR'S RECOMMENDATION FOR PRIORITY MAINTENANCE REPAIRS**

Bridge: 090076                      County BRUNSWICK

THE FOLLOWING MAINTENANCE ITEMS HAVE BEEN SUBMITTED IN CONJUNCTION WITH A PRIORITY MAINTENANCE REQUEST

MMS Code	MMS Description	Quantity
3120	Repair/Maintain Barriers	1            LF
Location:		
Bent/Span No.		
Priority Level	Status	
	Request Awaiting Assignment	
Submitted Date:	Submitted By:	Assisted By:
05/25/2021	BRYAN CROOM	
Details		
NORTHWEST GUARDRAIL POST DAMAGED ( 25' FROM END BENT 2 ) ( PRIORITY ACTION REQUEST SUBMITTED )		

# Bridge Inspection Field Sketch

DELETED SKETCH

**Title**

DELETED SKETCH

**Description**

DELETED SKETCH

**Bridge No:** 090076

**Drawn By:**

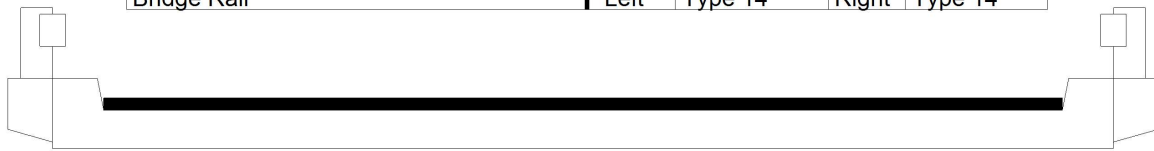
**Date:**

**File Name:**S0042000460

# Bridge Inspection Field Sketch

## CLRDWY MEASUREMENTS TAKEN BETWEEN CURBS AT END BENT 1

Deck Width/Out to Out	31.667ft	Between Rails	29.417ft
Clear Roadway	26.333ft	Wearing Surface	0.333ft
Median Width		Median Height	
Curb Height		Left	0.417ft
Sidewalk Width		Right	0.417ft
Clear Roadway (Rail to Median)		Left	
Guardrail Width		Right	
Top of Rail to Deck/Wearing Surface		Left	1.125ft
Bridge Rail		Right	1.125ft
		Left	2.5ft
		Right	2.5ft
		Left	Type 14
		Right	Type 14



Measurements for Span #	1		
Deck Thickness	1.833	Left Overhang	1.833
Top of Rail to Bottom of Beam	4.667	Right Overhang	1.833

Number of Slabs	Slab Width	Slab Height	Comments
1	28ft	1.833ft	

BC CHECKED 5-21-21

**Title**

SPAN 1 SUPERSTRUCTURE

**Description**

LOOKING NORTH

Bridge No: 090076

Drawn By: **BC**

Date: 03/18/2005

File Name: S0042000461



# Bridge Inspection Field Sketch

DELETED SKETCH

**Title**

DELETED SKETCH 2

**Description**

DELETED SKETCH 2

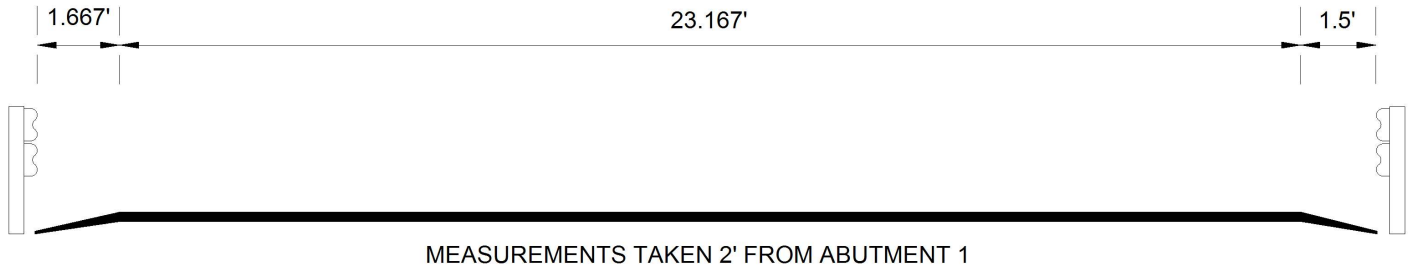
Bridge No: 090076

Drawn By:

Date:

File Name: S0042060853

# Bridge Inspection Field Sketch

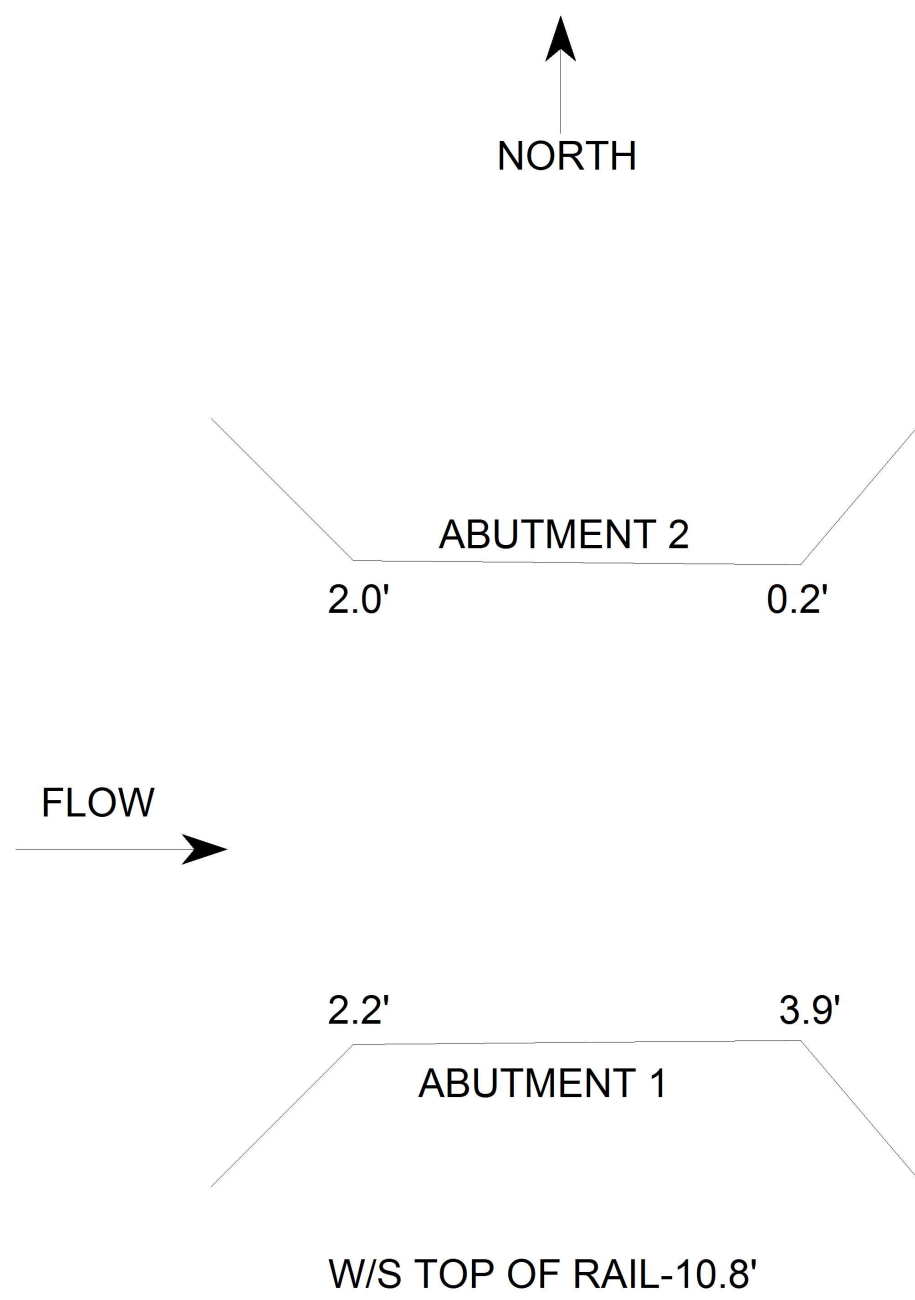


Roadway	23.167ft Wide	2 Paved Lanes	Looking North
Left Shoulder	1.667ft Wide	1.667ft Paved	
Right Shoulder	1.5ft Wide	1.5ft Paved	
Left Guardrail	1.667ft from road		
Right Guardrail	1.5ft from road		

BC CHECKED 5-21-21

<b>Title</b> ROADWAY		<b>Description</b> LOOKING NORTH	
<b>Bridge No:</b> 090076	<b>Drawn By:</b> rgm	<b>Date:</b> 06/05/2007	<b>File Name:</b> S0042060854

# Bridge Inspection Field Sketch



<b>Title</b> PLAN VIEW		<b>Description</b> TOPO VIEW	
<b>Bridge No:</b> 090076	<b>Drawn By:</b> PGR	<b>Date:</b> 6/26/2019	<b>File Name:</b> S0174013584