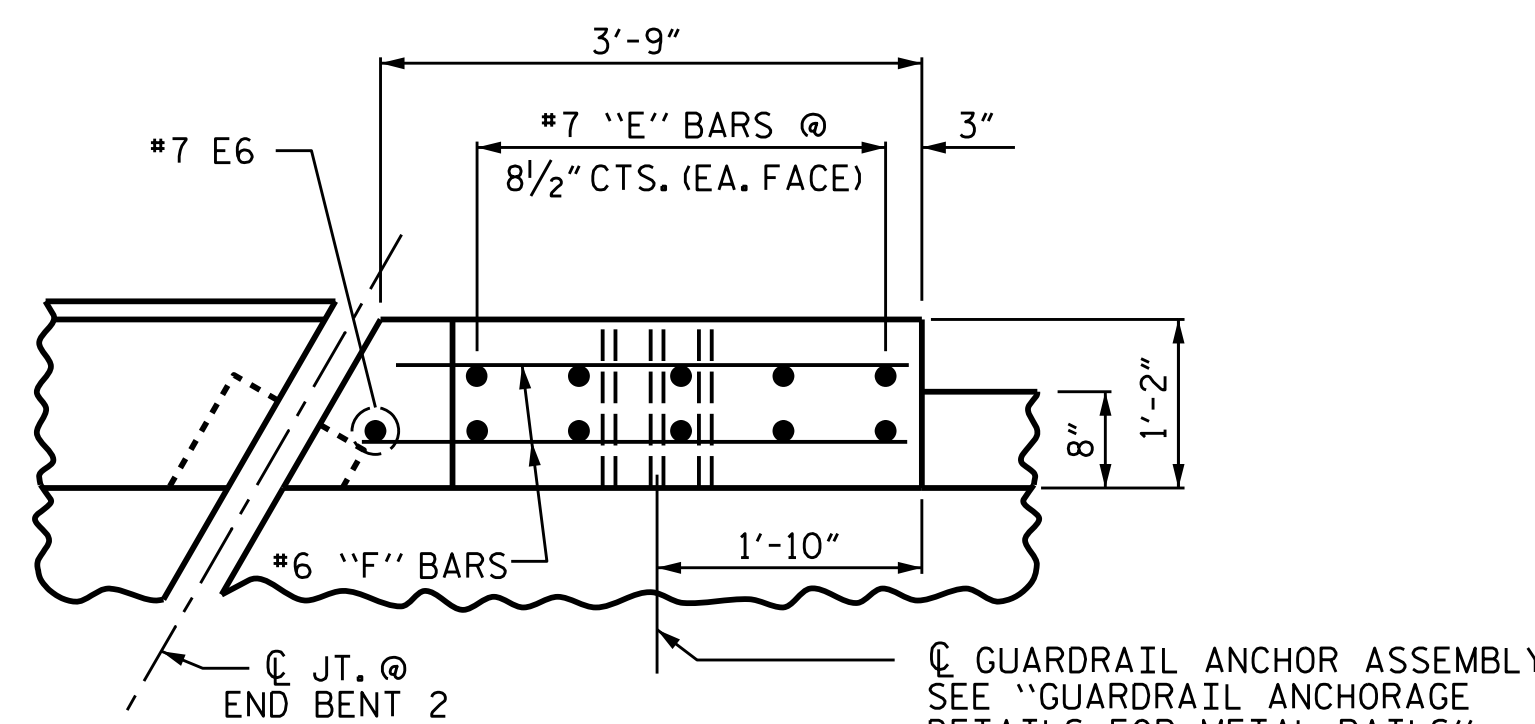


GUARDRAIL ANCHOR ASSEMBLY  
SEE "GUARDRAIL ANCHORAGE  
DETAILS FOR METAL RAILS"  
SHEET (TYP.)

PLAN OF END POST

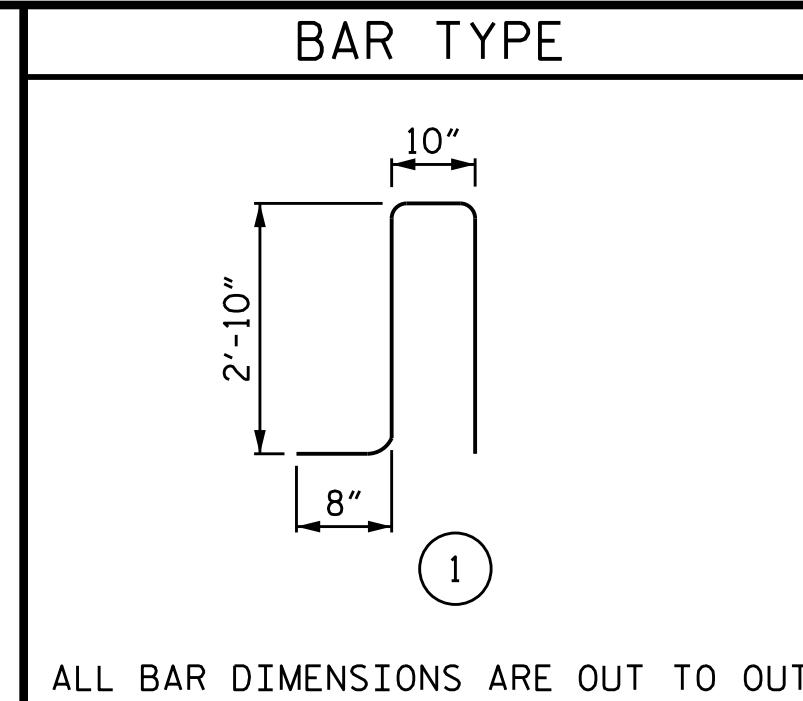
END BENT 1 STAGE II SHOWN, END BENT 1 STAGE I SIMILAR



GUARDRAIL ANCHOR ASSEMBLY  
SEE "GUARDRAIL ANCHORAGE  
DETAILS FOR METAL RAILS"  
SHEET (TYP.)

PLAN OF END POST

END BENT 2 STAGE II SHOWN, END BENT 2 STAGE I SIMILAR



ALL BAR DIMENSIONS ARE OUT TO OUT

APPROACH SLAB @ EB 1 (STAGE I)						APPROACH SLAB @ EB 1 (STAGE II)					
BILL OF MATERIAL FOR 1 END POST						BILL OF MATERIAL FOR 1 END POST					
BAR	NO.	SIZE	TYPE	LENGTH	WEIGHT	BAR	NO.	SIZE	TYPE	LENGTH	WEIGHT
*E1	2	#7	STR	2'-6"	10	*E1	2	#7	STR	2'-6"	10
*E2	2	#7	STR	2'-11"	12	*E2	2	#7	STR	2'-11"	12
*E3	2	#7	STR	3'-3"	13	*E3	2	#7	STR	3'-3"	13
*E4	2	#7	STR	3'-10"	16	*E4	2	#7	STR	3'-10"	16
*E5	2	#7	STR	4'-2"	17	*E5	2	#7	STR	4'-2"	17
*E6	3	#7	STR	4'-5"	27	*E6	3	#7	STR	4'-5"	27
*F1	4	#6	STR	3'-5"	21	*F1	4	#6	STR	3'-5"	21
*F2	1	#6	STR	2'-11"	4	*F2	1	#6	STR	2'-11"	4
*F3	1	#6	STR	1'-6"	2	*F3	1	#6	STR	1'-6"	2
*F4	1	#6	STR	3'-9"	6	*F4	1	#6	STR	3'-9"	6
*F5	4	#6	STR	3'-11"	24	*F5	4	#6	STR	3'-11"	24
*F6	1	#6	STR	3'-5"	5	*F6	1	#6	STR	3'-5"	5
*F7	1	#6	STR	2'-0"	3	*F7	1	#6	STR	2'-0"	3
*F8	1	#6	STR	4'-5"	7	*F8	1	#6	STR	4'-5"	7
*S1	4	#5	1	7'-2"	30	*S1	4	#5	1	7'-2"	30
*EPOXY COATED REINFORCING STEEL	LBS.	197				*EPOXY COATED REINFORCING STEEL	LBS.	197			
CLASS AA CONCRETE	CU.YDS.	0.7				CLASS AA CONCRETE	CU.YDS.	0.7			

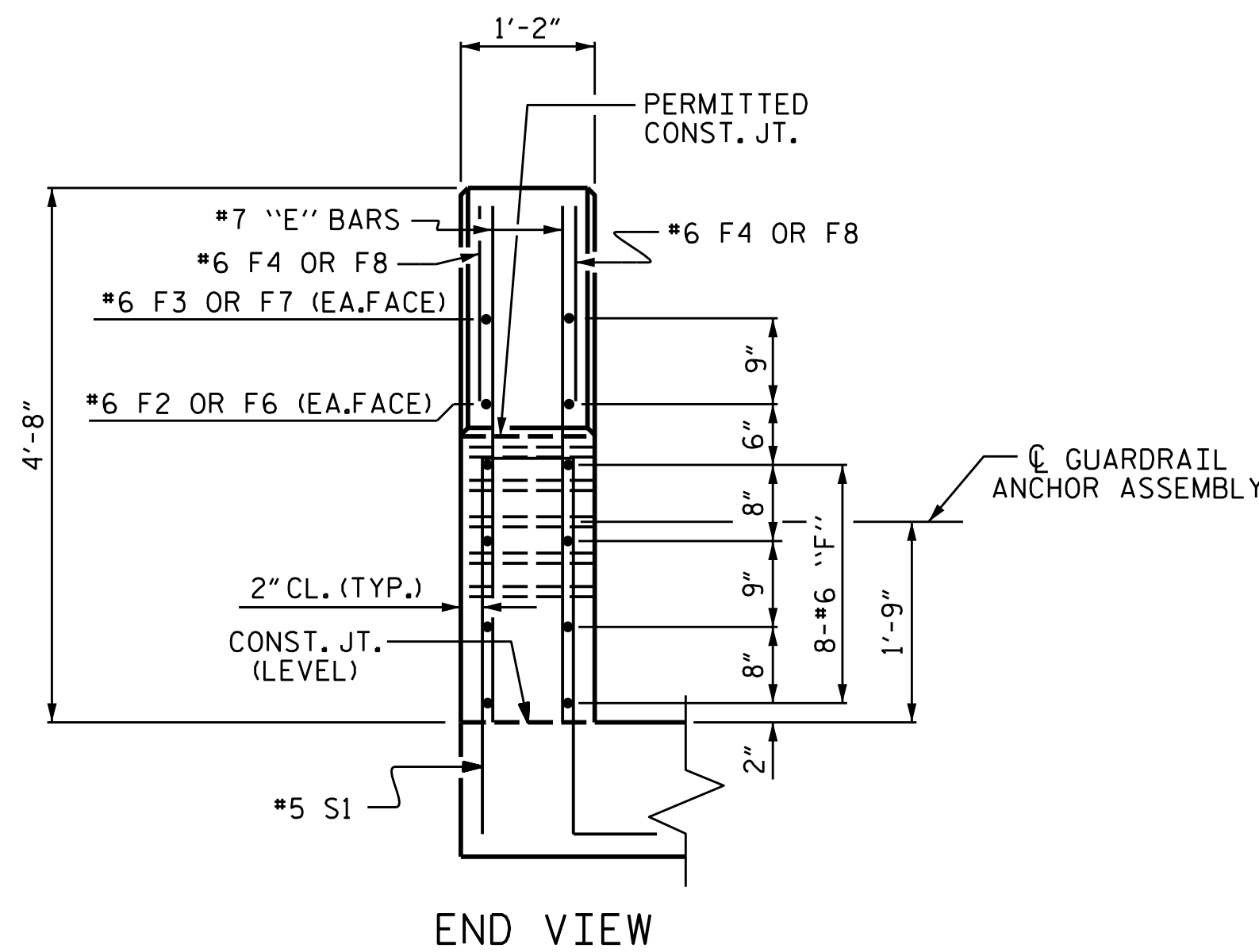
APPROACH SLAB @ EB 2 (STAGE I)						APPROACH SLAB @ EB 2 (STAGE II)					
BILL OF MATERIAL FOR 1 END POST						BILL OF MATERIAL FOR 1 END POST					
BAR	NO.	SIZE	TYPE	LENGTH	WEIGHT	BAR	NO.	SIZE	TYPE	LENGTH	WEIGHT
*E1	2	#7	STR	2'-6"	10	*E1	2	#7	STR	2'-6"	10
*E2	2	#7	STR	2'-11"	12	*E2	2	#7	STR	2'-11"	12
*E3	2	#7	STR	3'-3"	13	*E3	2	#7	STR	3'-3"	13
*E4	2	#7	STR	3'-10"	16	*E4	2	#7	STR	3'-10"	16
*E5	2	#7	STR	4'-2"	17	*E5	2	#7	STR	4'-2"	17
*E6	1	#7	STR	4'-5"	9	*E6	1	#7	STR	4'-5"	9
*F1	4	#6	STR	3'-5"	21	*F1	4	#6	STR	3'-5"	21
*F2	1	#6	STR	2'-11"	4	*F2	1	#6	STR	2'-11"	4
*F3	1	#6	STR	1'-6"	2	*F3	1	#6	STR	1'-6"	2
*F4	1	#6	STR	3'-5"	5	*F4	1	#6	STR	3'-5"	5
*F5	4	#6	STR	3'-8"	22	*F5	4	#6	STR	3'-8"	22
*F6	1	#6	STR	3'-3"	5	*F6	1	#6	STR	3'-3"	5
*F7	1	#6	STR	1'-10"	3	*F7	1	#6	STR	1'-10"	3
*F8	1	#6	STR	4'-1"	6	*F8	1	#6	STR	4'-1"	6
*S1	4	#5	1	7'-2"	30	*S1	4	#5	1	7'-2"	30
*EPOXY COATED REINFORCING STEEL	LBS.	175				*EPOXY COATED REINFORCING STEEL	LBS.	175			
CLASS AA CONCRETE	CU.YDS.	0.7				CLASS AA CONCRETE	CU.YDS.	0.7			

NOTES

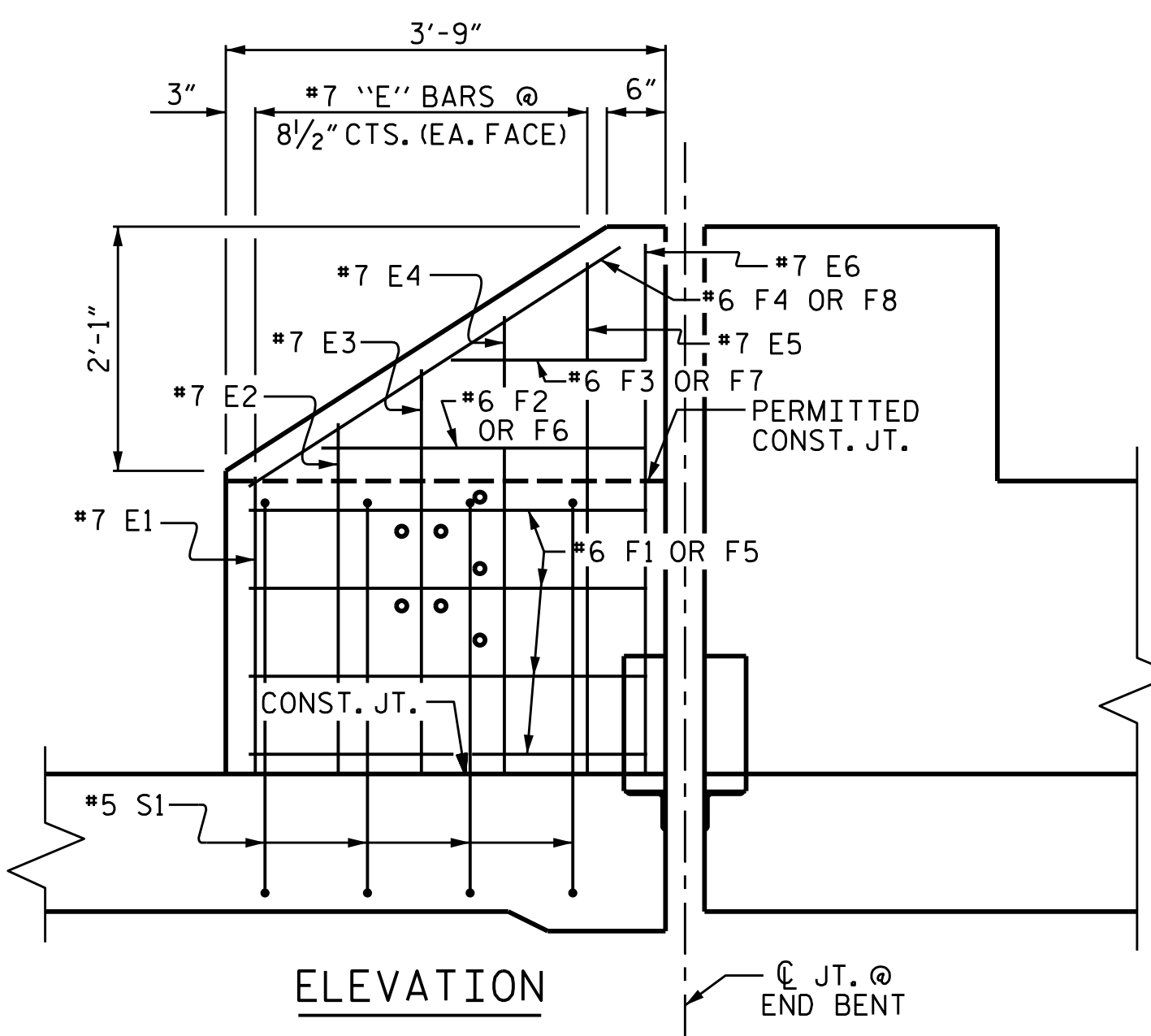
THE COST OF THE END POST ON THE APPROACH SLAB SHALL BE INCLUDED IN THE LINEAR FOOT CONTRACT PRICE BID FOR "1'-2" X 2'-6" CONCRETE PARAPET".

THE END POST ON EACH APPROACH SLAB SHALL NOT BE CAST UNTIL ALL APPROACH SLAB CONCRETE HAS BEEN CAST AND HAS REACHED A MINIMUM COMPRESSIVE STRENGTH OF 3,000 PSI.

ALL REINFORCING STEEL IN END POSTS SHALL BE EPOXY COATED.

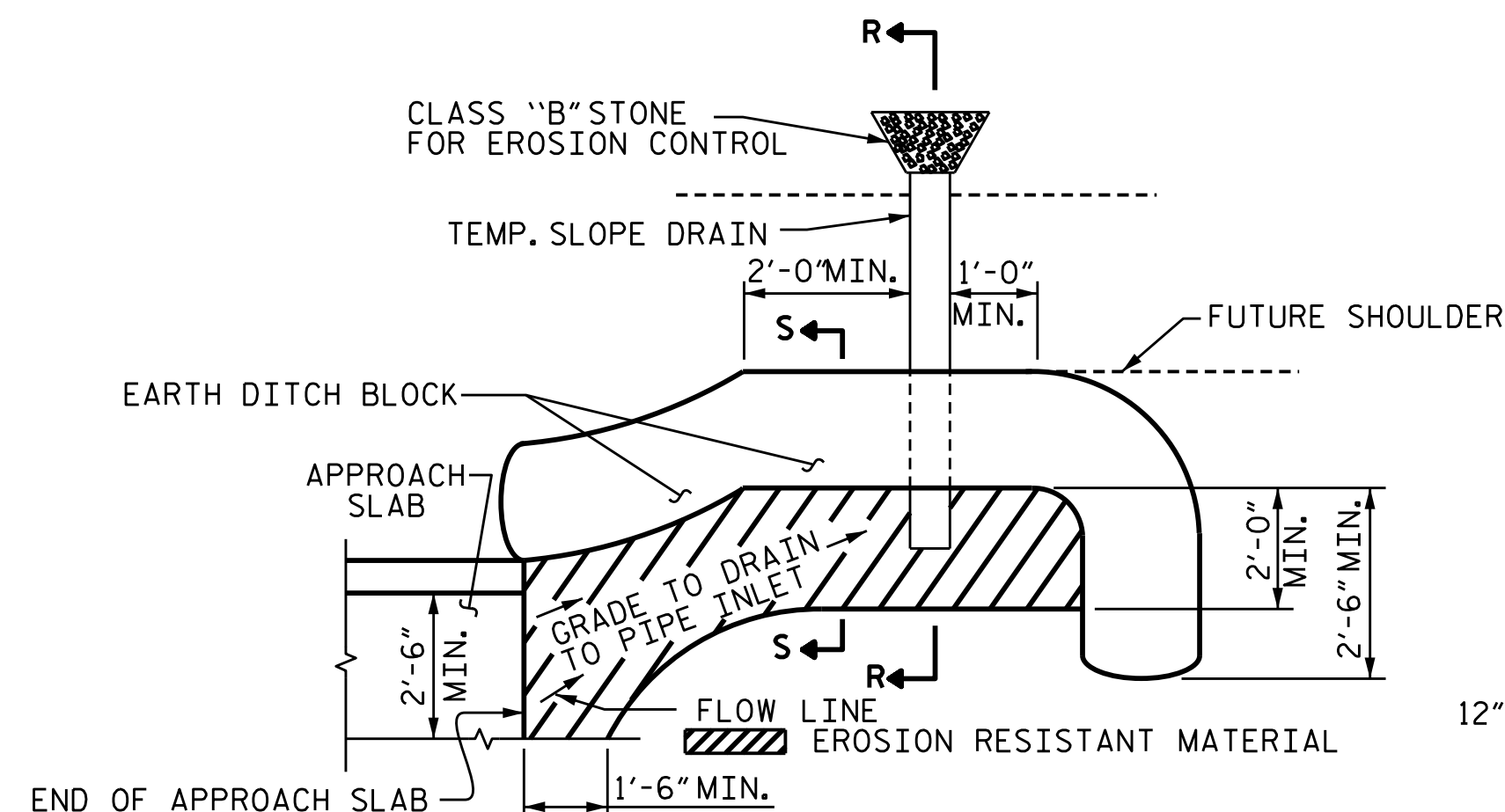


END VIEW

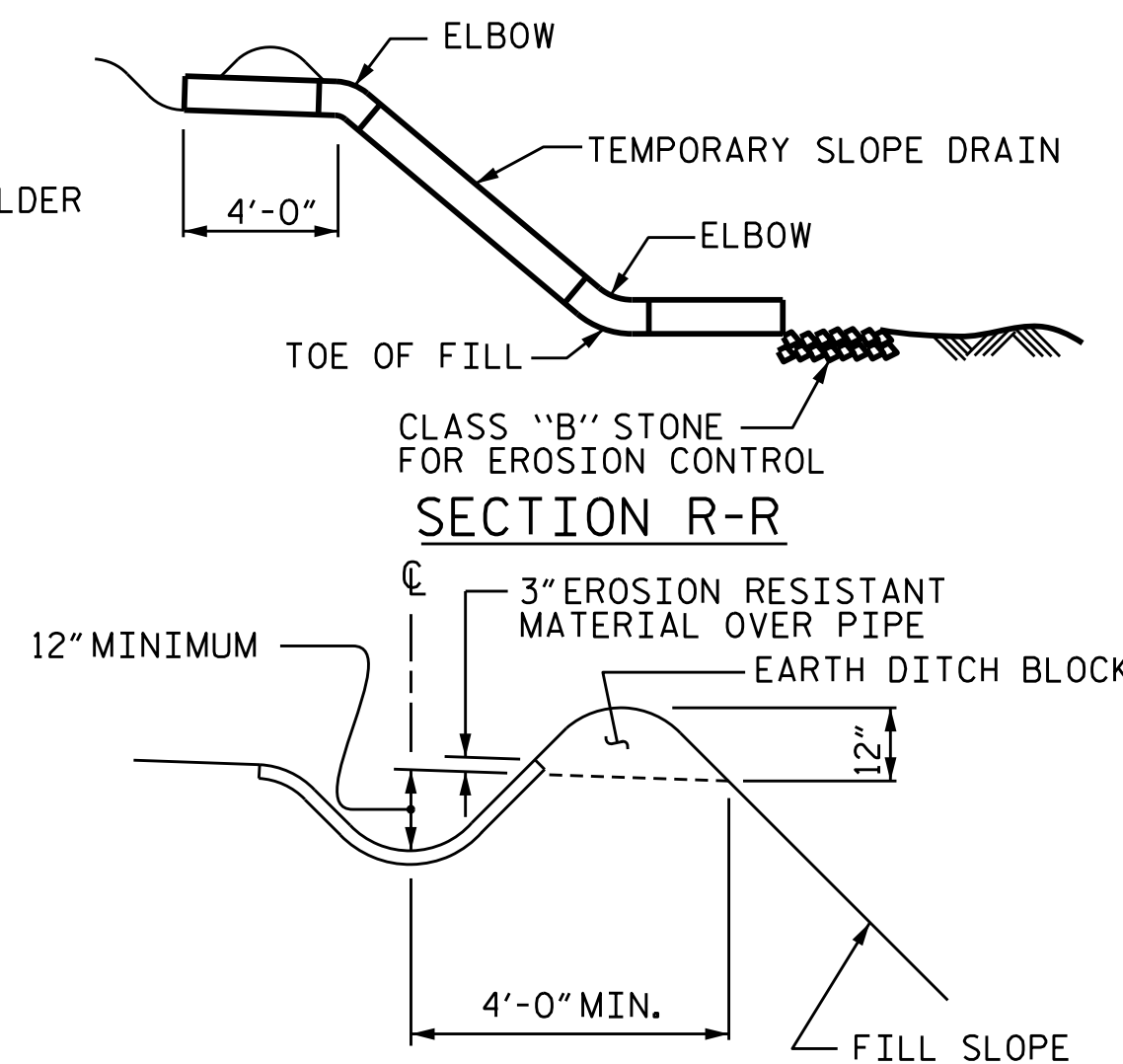


ELEVATION

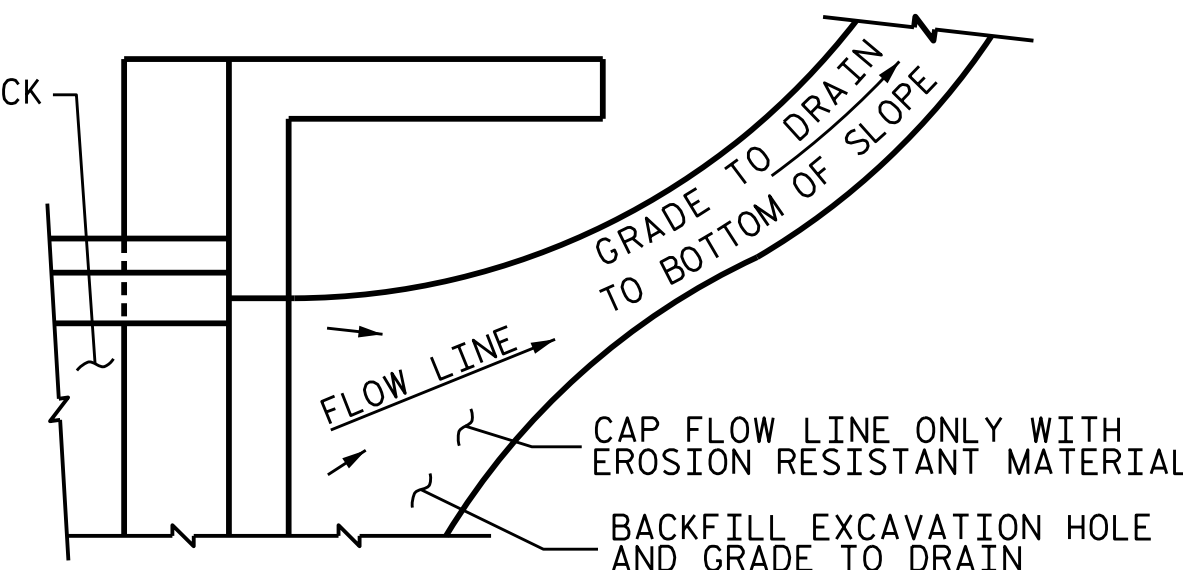
END POST FOR TWO BAR RAIL



PLAN VIEW



SECTION R-R



TEMPORARY DRAINAGE DETAIL

NOTE: IMMEDIATELY AFTER THE CONSTRUCTION OF THE APPROACH SLAB, THE CONTRACTOR SHALL PROVIDE TEMPORARY BERM AND SLOPE DRAIN. CONTRACTOR SHALL GRADE TO PIPE INLET AND PROVIDE EROSION RESISTANT MATERIAL AS SHOWN. THE EROSION RESISTANT MATERIAL SHALL BE EITHER 1) ASPHALT PLANT MIX, TYPE 1 OR TYPE 2, MIN. 2" DEPTH, 2) EROSION CONTROL MAT, OR 3) CONCRETE, AS DIRECTED BY THE ENGINEER. THE SLOPE DRAIN SHALL CONSIST OF A NON-PERFORATED TEMPORARY DRAINAGE PIPE, 12 INCHES IN DIAMETER.

NOTE: IF THE APPROACH SLAB IS NOT CONSTRUCTED IMMEDIATELY AFTER THE BACKFILLING OF THE END BENT EXCAVATION, GRADE TO DRAIN TO THE BOTTOM OF THE SLOPE AND PROVIDE EROSION RESISTANT MATERIAL, SUCH AS FIBERGLASS ROVING OR AS DIRECTED BY THE ENGINEER TO PREVENT SOIL EROSION AND TO PROTECT THE AREA ADJACENT TO THE STRUCTURE. THE CONTRACTOR WILL BE REQUIRED TO REMOVE THESE MATERIALS PRIOR TO CONSTRUCTION OF THE APPROACH SLAB.

PROJECT NO. R-2566BA  
WATAUGA COUNTY  
STATION: 164+30.00 -L-

SHEET 4 OF 4



STATE OF NORTH CAROLINA  
DEPARTMENT OF TRANSPORTATION  
RALEIGH

STANDARD

BRIDGE APPROACH  
SLAB DETAILS

ASSEMBLED BY : STM DATE : 06/21  
CHECKED BY : S.B. WILLIAMS DATE : 06/21

DRAWN BY : FCJ 11/88 MAA/GM  
CHECKED BY : ARB 11/88 REV. 12/17 MAA/THC  
REV. 5/18 MAA/THC

7/29/2021  
X:\NCDOT\R-2566BA\Structures\Final plans\DCN files\401.159.R-2566BA.SMU. AS4.S79.940005.dgn  
User:zsm11h

TEMPORARY BERM AND SLOPE DRAIN DETAILS

(TO BE USED WHEN SHOULDER BERM CUTTER IS REQUIRED)

DOCUMENT NOT CONSIDERED FINAL  
UNLESS ALL SIGNATURES COMPLETED

REVISIONS

NO.	BY:	DATE:	NO.	BY:	DATE:
1			3		
2			4		

SHEET NO.

S-79  
TOTAL SHEETS 79

STD. NO. BAS4(SHT 6b)