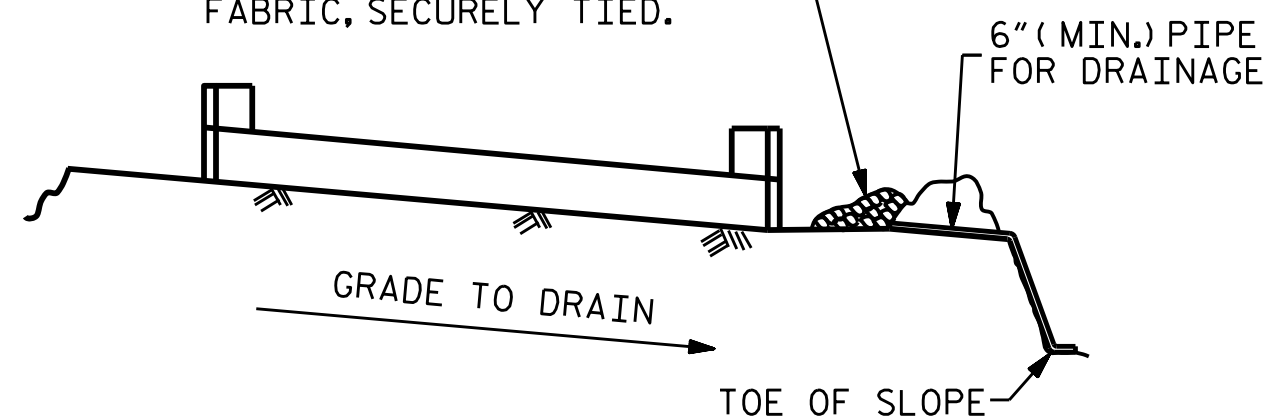


MINIMUM OF 3- ONE CUBIC FOOT BAGS OF #78M STONE. BAGS SHALL BE OF POROUS FABRIC, SECURELY TIED.

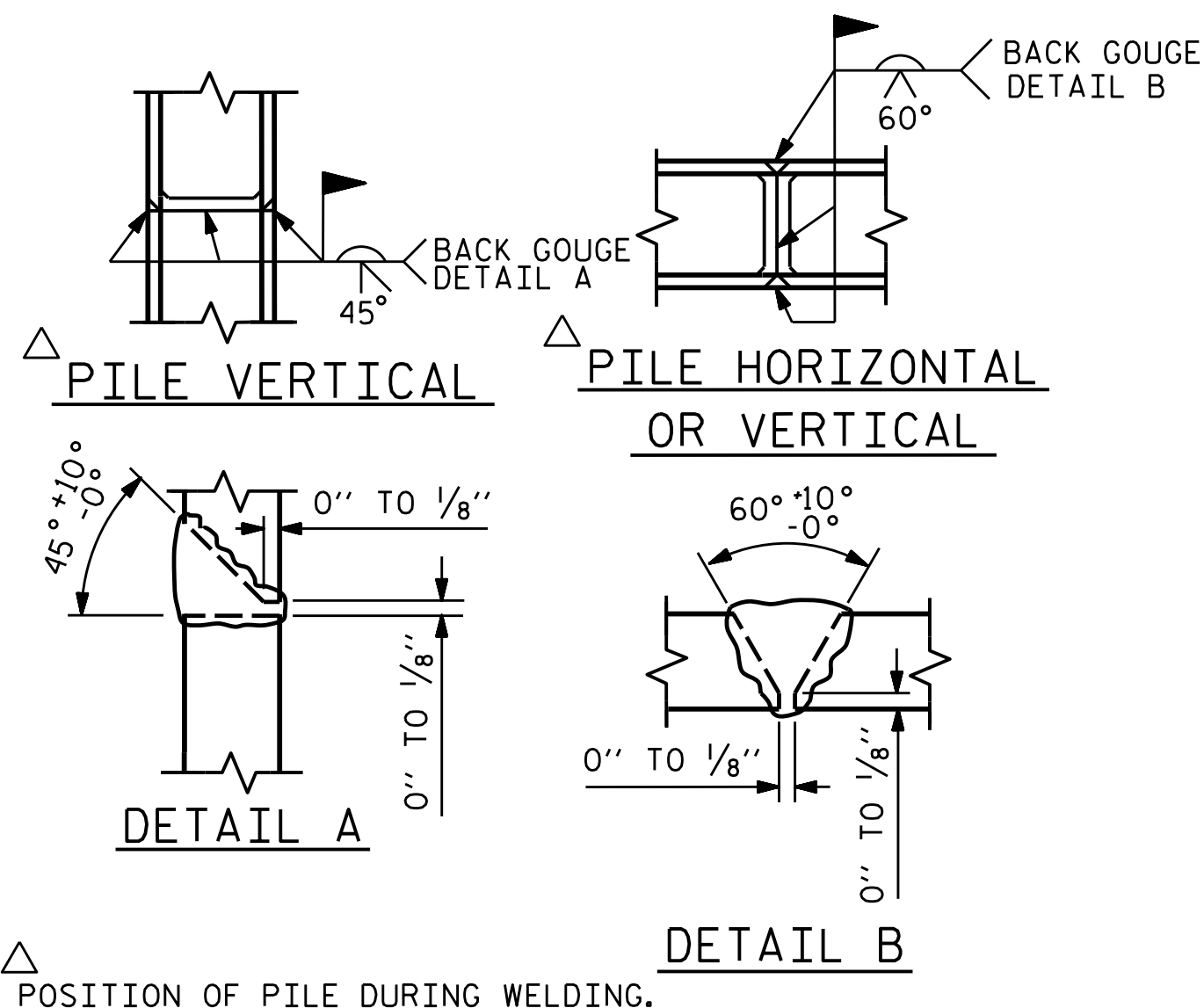


BAGGED STONE AND PIPE SHALL BE PLACED IMMEDIATELY AFTER COMPLETION OF END BENT EXCAVATION. PIPE MAY BE EITHER CONCRETE, CORRUGATED STEEL, CORRUGATED ALUMINUM ALLOY, OR CORRUGATED PLASTIC. PERFORATED PIPE WILL NOT BE ALLOWED.

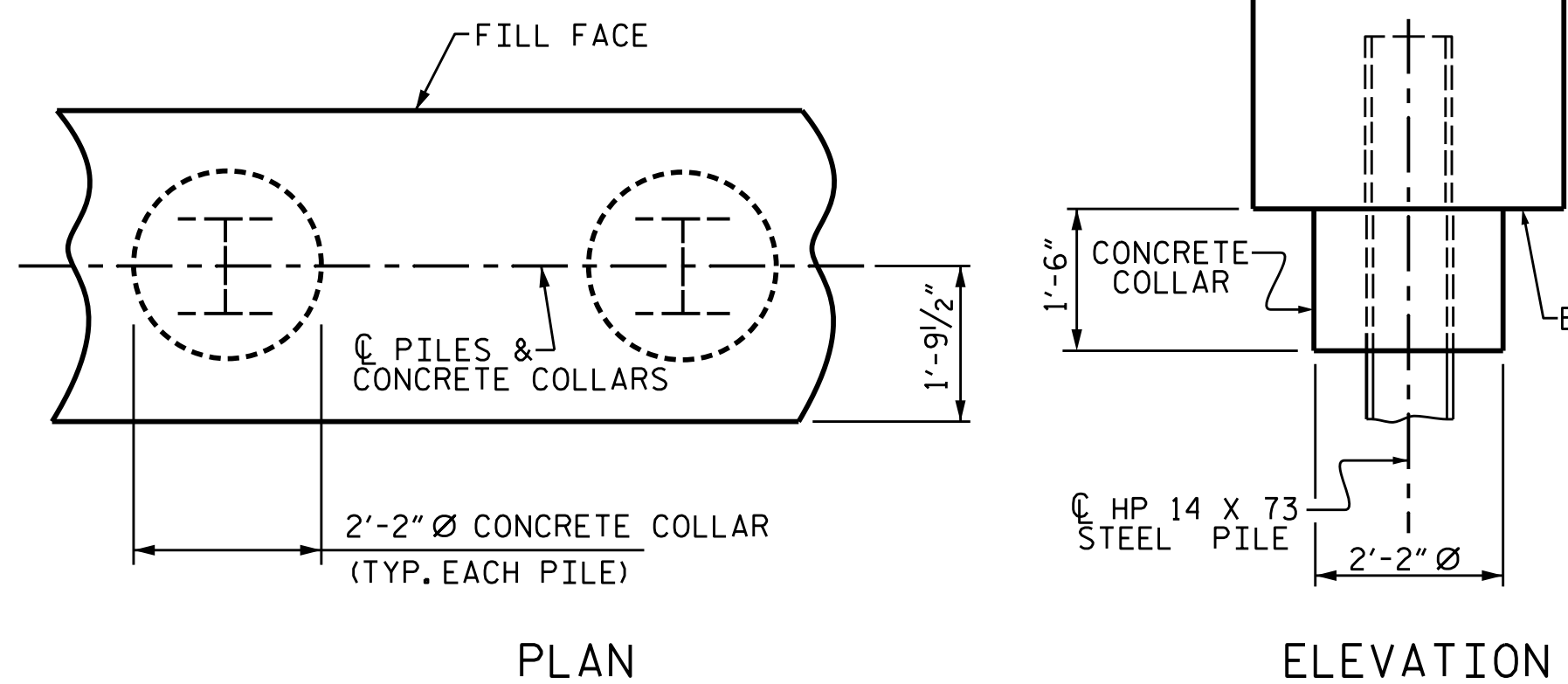
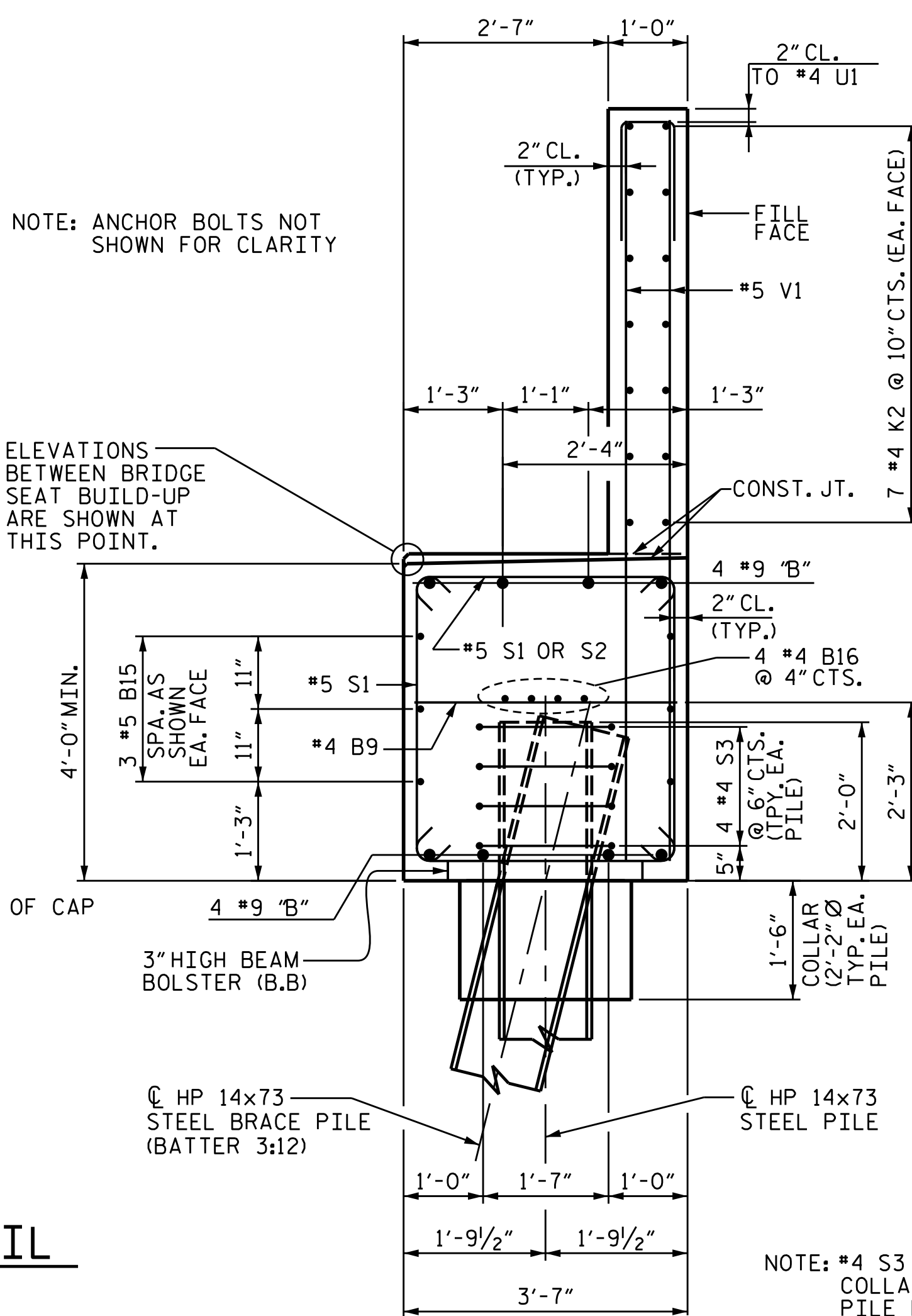
BAGGED STONE SHALL REMAIN IN PLACE UNTIL THE ENGINEER DIRECTS THAT IT BE REMOVED. THE CONTRACTOR SHALL REMOVE AND DISPOSE OF SILT ACCUMULATIONS AT BAGGED STONE WHEN SO DIRECTED BY THE ENGINEER. BAGS SHALL BE REMOVED AND REPLACED WHENEVER THE ENGINEER DETERMINES THAT THEY HAVE DETERIORATED AND LOST THEIR EFFECTIVENESS.

NO SEPARATE PAYMENT WILL BE MADE FOR THIS WORK AND THE ENTIRE COST OF THIS WORK SHALL BE INCLUDED IN THE UNIT CONTRACT PRICE BID FOR THE SEVERAL PAY ITEMS.

TEMPORARY DRAINAGE AT END BENT



PILE SPLICE DETAILS



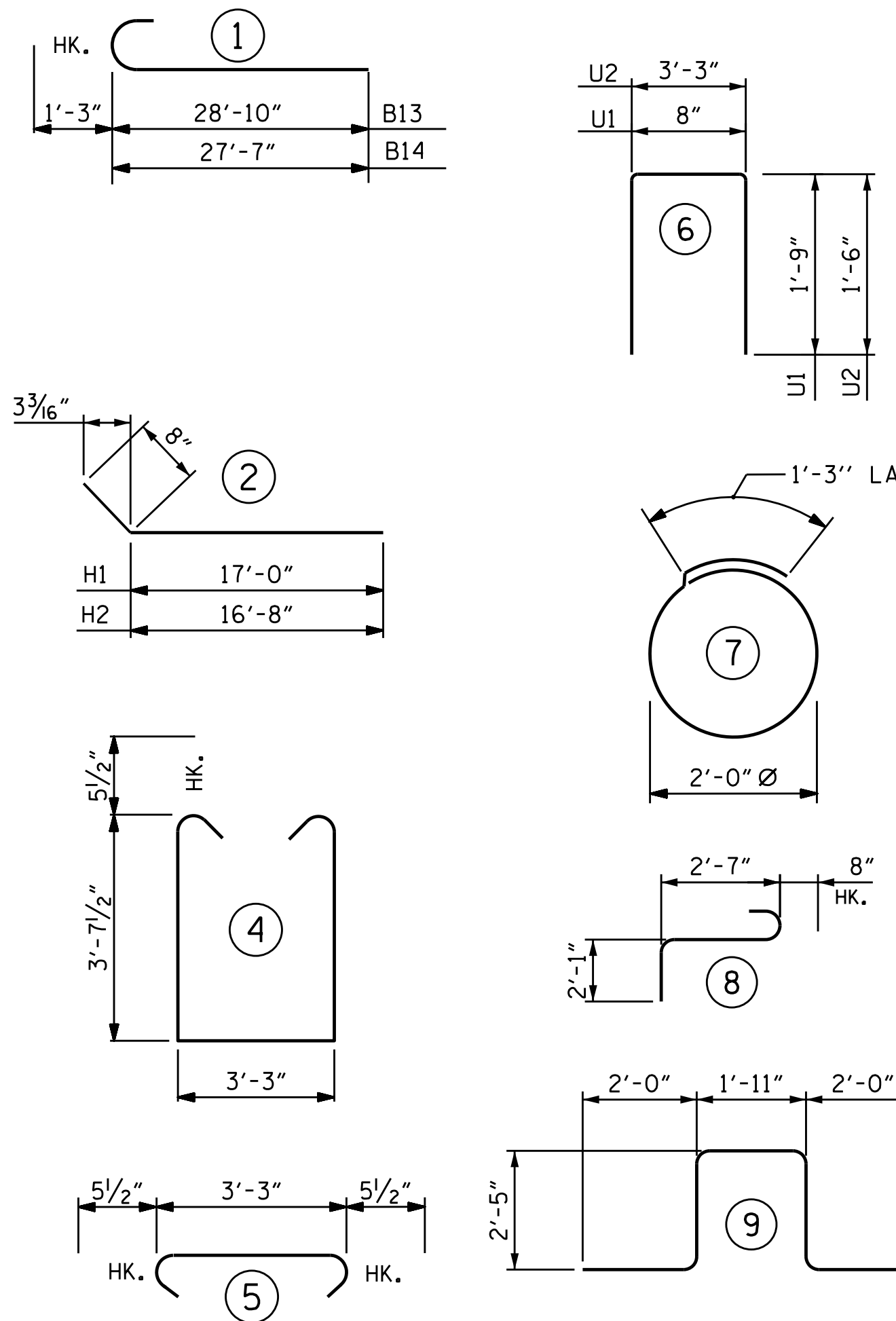
CORROSION PROTECTION FOR STEEL PILES DETAIL

SECTION THRU CAP

NOTE: #4 S3 BARS AND CONCRETE COLLAR NOT SHOWN ON BRACE PILE FOR CLARITY.

BAR TYPES

ALL BAR DIMENSIONS ARE OUT TO OUT.



TOTAL END BENT 2 QUANTITIES

REINFORCING STEEL	14,423 LBS.
CLASS A CONCRETE	113.3 C.Y.
HP 14 X 73 STEEL PILES	355 LIN. FT.
PILE DRIVING EQUIPMENT SETUP FOR HP 14 X 73 STEEL PILES	8 EA.
PILE EXCAVATION IN SOIL	78.00 LIN. FT.
PILE EXCAVATION NOT IN SOIL	25.00 LIN. FT.

BILL OF MATERIAL

END BENT 2 STAGE II

BAR NO.	SIZE	TYPE	LENGTH	WEIGHT	
B9	19	#4	STR.	3'-3"	41
B10	28	#4	STR.	6'-10"	128
B12	8	#9	STR.	50'-0"	1360
B13	4	#9	1	30'-1"	409
B14	4	#9	1	28'-10"	392
B15	12	#5	STR.	38'-9"	485
B16	8	#4	STR.	38'-2"	204
H1	12	#4	2	17'-8"	142
H2	12	#4	2	17'-4"	139
K2	28	#4	STR.	38'-2"	714
K12	4	#4	STR.	3'-1"	8
S1	174	#5	4	11'-5"	2072
S2	56	#5	5	4'-2"	243
S3	40	#4	7	7'-7"	203
S4	3	#6	9	10'-9"	48
S5	3	#6	8	5'-4"	24
U1	71	#4	6	4'-2"	198
U2	35	#4	6	6'-3"	146
V1	142	#5	STR.	10'-0"	1481
V2	42	#5	STR.	11'-3"	493

REINFORCING STEEL 8,930 LBS.

CLASS A CONCRETE BREAKDOWN

POUR #1 CAP, LOWER PART OF WING & COLLARS 47.7 C.Y.

POUR #2 BACKWALL AND UPPER PART OF WING 20.9 C.Y.

TOTAL CLASS A CONCRETE 68.6 C.Y.

HP 14 X 73 STEEL PILES NO: 11 LIN. FT. = 235

PILE DRIVING EQUIPMENT SETUP FOR HP 14 X 73 STEEL PILES EACH = 8

PILE EXCAVATION IN SOIL 21.27 L.F.
PILE EXCAVATION NOT IN SOIL 6.82 L.F.

PROJECT NO. R-2566BA

WATAUGA COUNTY

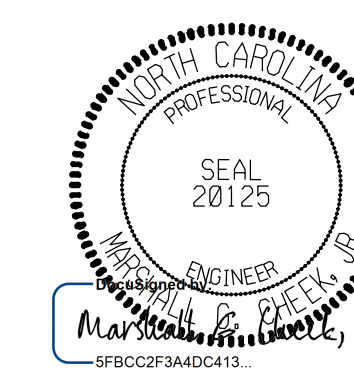
STATION: 164+30.00-L-

SHEET 10 OF 10

STATE OF NORTH CAROLINA
DEPARTMENT OF TRANSPORTATION
RALEIGH

SUBSTRUCTURE

END BENT 2
STAGE II DETAILS



9/30/2021 | 1:43 PM EDT

DOCUMENT NOT CONSIDERED FINAL UNLESS ALL SIGNATURES COMPLETED

REVISIONS

NO.	BY:	DATE:	NO.	BY:	DATE:
1			3		
2			4		

SHEET NO.

S-74

TOTAL SHEETS

79

DRAWN BY: NMW DATE: 3/19
CHECKED BY: RAR DATE: 6/19
DESIGN ENGINEER OF RECORD: TBE DATE: 6/19

TGS ENGINEERS
804-C N. LAFAYETTE ST
SHELBY, NC 28150
PH (704) 476-0003
CORP. LICENSE NO.: C-0275