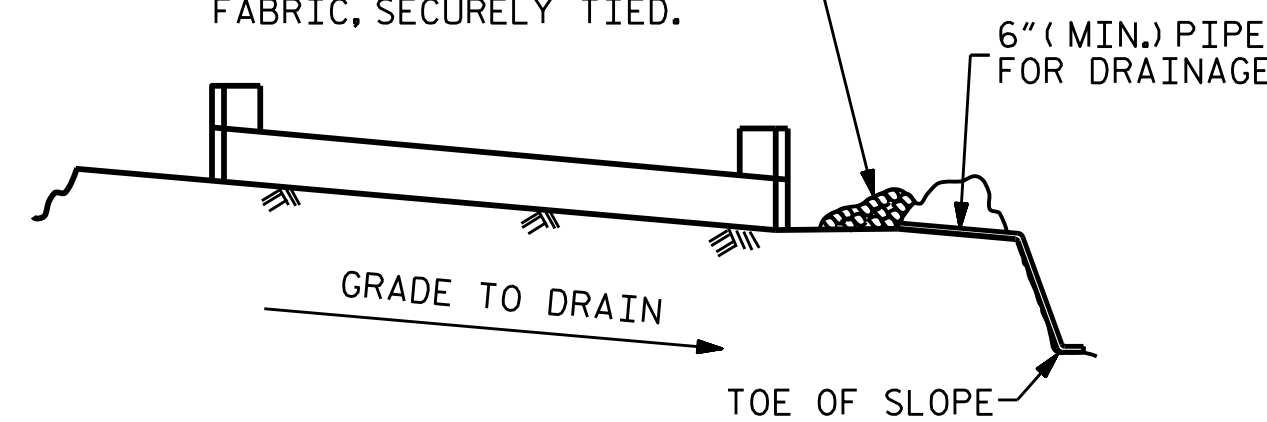


MINIMUM OF 3- ONE CUBIC FOOT BAGS OF #78M STONE. BAGS SHALL BE OF POROUS FABRIC, SECURELY TIED.

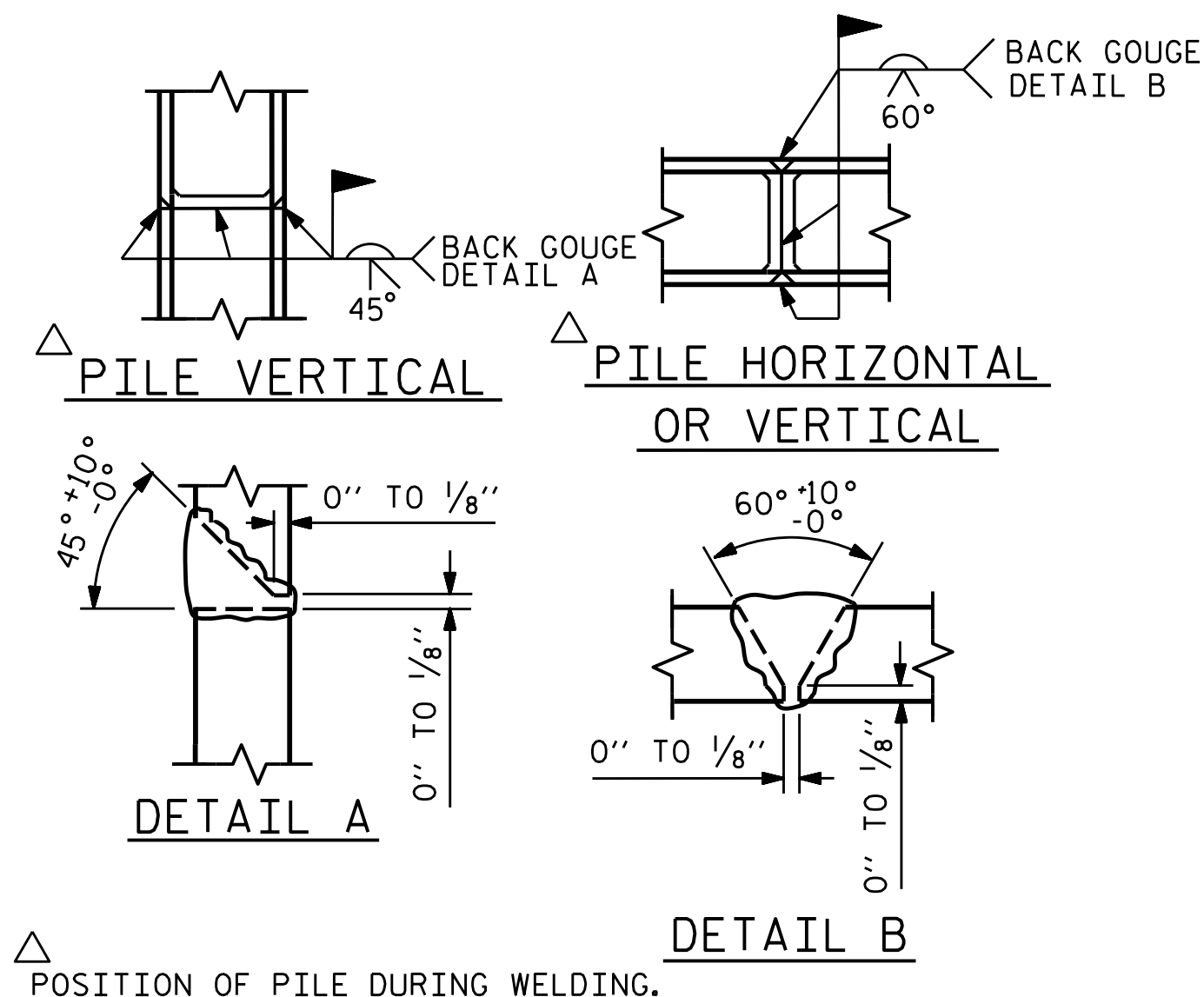


BAGGED STONE AND PIPE SHALL BE PLACED IMMEDIATELY AFTER COMPLETION OF END BENT EXCAVATION. PIPE MAY BE EITHER CONCRETE, CORRUGATED STEEL, CORRUGATED ALUMINUM ALLOY, OR CORRUGATED PLASTIC. PERFORATED PIPE WILL NOT BE ALLOWED.

BAGGED STONE SHALL REMAIN IN PLACE UNTIL THE ENGINEER DIRECTS THAT IT BE REMOVED. THE CONTRACTOR SHALL REMOVE AND DISPOSE OF SILT ACCUMULATIONS AT BAGGED STONE WHEN SO DIRECTED BY THE ENGINEER. BAGS SHALL BE REMOVED AND REPLACED WHENEVER THE ENGINEER DETERMINES THAT THEY HAVE DETERIORATED AND LOST THEIR EFFECTIVENESS.

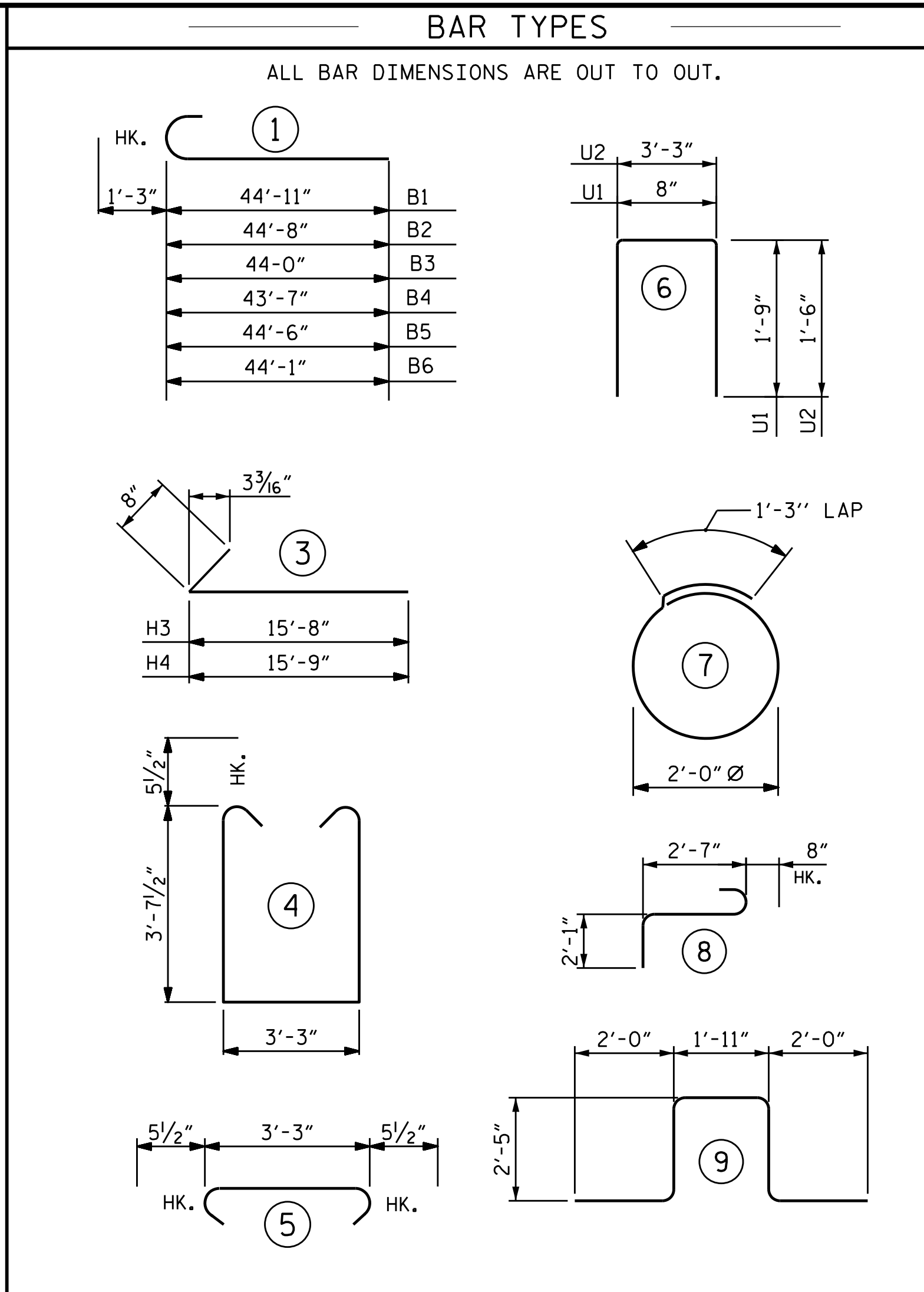
NO SEPARATE PAYMENT WILL BE MADE FOR THIS WORK AND THE ENTIRE COST OF THIS WORK SHALL BE INCLUDED IN THE UNIT CONTRACT PRICE BID FOR THE SEVERAL PAY ITEMS.

TEMPORARY DRAINAGE AT END BENT

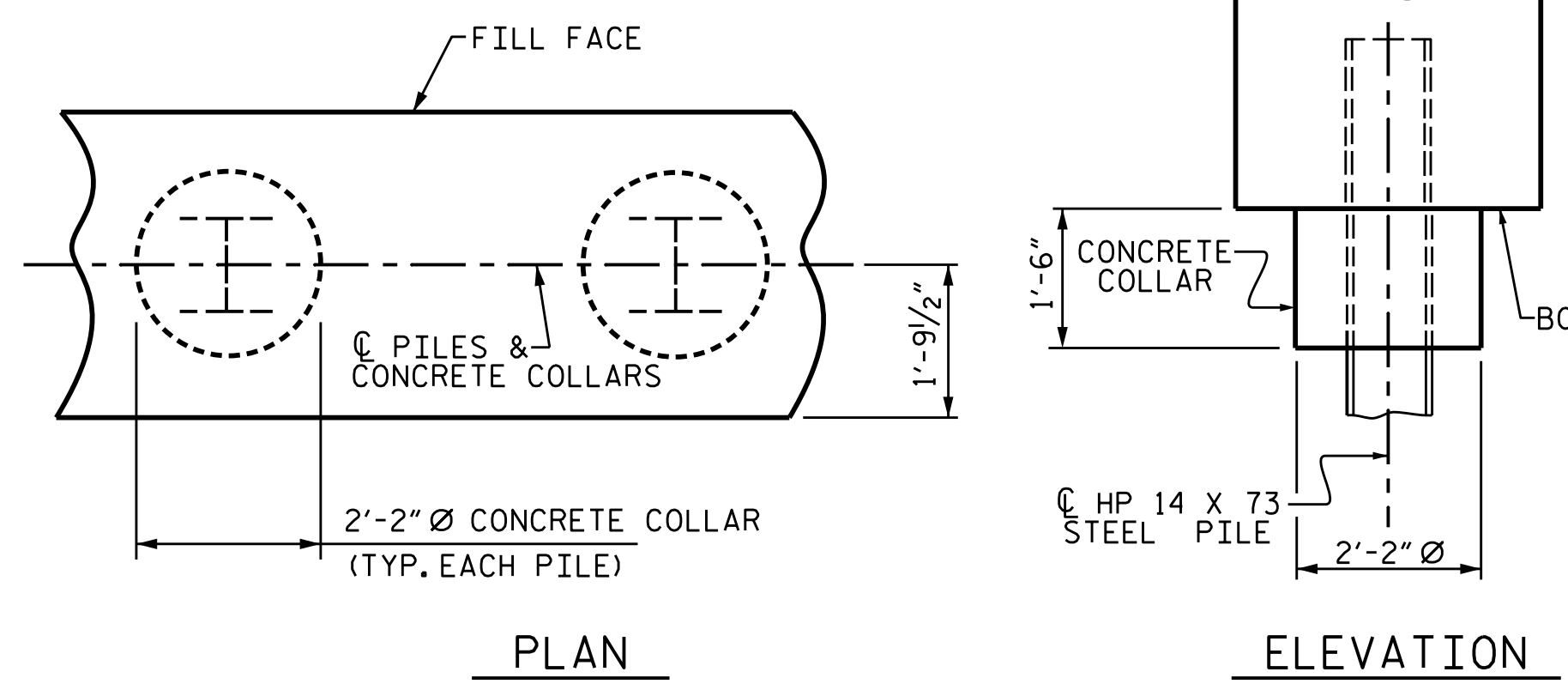
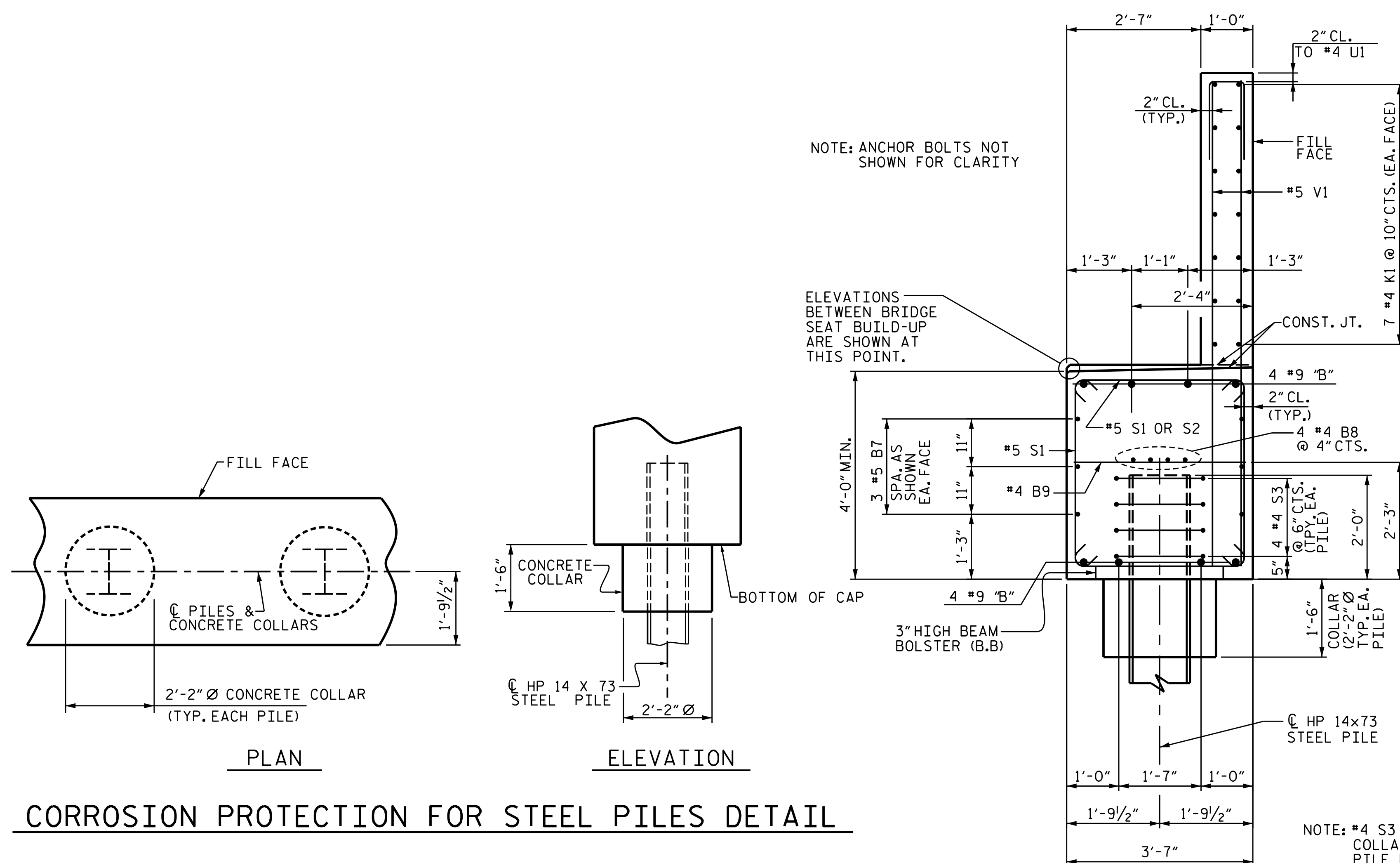


POSITION OF PILE DURING WELDING.

PILE SPLICE DETAILS



BILL OF MATERIAL					
END BENT 2 STAGE I					
BAR NO.	SIZE	TYPE	LENGTH	WEIGHT	
B1	#9	1	46'-2"	314	
B2	#9	1	45'-11"	156	
B3	#9	1	45'-3"	154	
B4	#9	1	44'-10"	305	
B5	#9	1	45'-9"	156	
B6	#9	1	45'-4"	154	
B7	#5	STR.	25'-0"	313	
B8	#4	STR.	24'-4"	130	
B9	#4	STR.	3'-3"	24	
B10	#4	STR.	6'-10"	55	
B11	#4	STR.	13'-0"	35	
H3	#4	3	16'-4"	142	
H4	#4	3	16'-5"	143	
K1	#4	STR.	23'-9"	444	
K11	#4	STR.	2'-8"	7	
S1	#5	4	11'-5"	1143	
S2	#5	5	4'-2"	87	
S3	#4	7	7'-7"	142	
S4	#6	9	10'-9"	48	
S5	#6	8	5'-4"	24	
U1	#4	6	4'-2"	111	
U2	#4	6	6'-3"	96	
V1	#5	STR.	10'-0"	834	
V3	#5	STR.	12'-0"	476	
REINFORCING STEEL				5,493	LBS.
CLASS A CONCRETE BREAKDOWN					
POUR #1 CAP, LOWER PART OF WING & COLLARS				30.7	C.Y.
POUR #2 BACKWALL AND UPPER PART OF WING				14.0	C.Y.
TOTAL CLASS A CONCRETE				44.7	C.Y.
HP 14 X 73 STEEL PILES					
NO: 8				120	LIN. FT.
PILE EXCAVATION IN SOIL				56.73	L.F.
PILE EXCAVATION NOT IN SOIL				18.18	L.F.



CORROSION PROTECTION FOR STEEL PILES DETAIL

SECTION THRU CAP

NOTE: #4 S3 BARS AND CONCRETE COLLAR NOT SHOWN ON BRACE PILE FOR CLARITY.

PROJECT NO. R-2566BA
 WATAUGA COUNTY
 STATION: 164+30.00-L-
 SHEET 5 OF 10

STATE OF NORTH CAROLINA
 DEPARTMENT OF TRANSPORTATION
 RALEIGH
 SUBSTRUCTURE
 END BENT 2
 STAGE I DETAILS

9/30/2021 | 1:43 PM EDT
 DOCUMENT NOT CONSIDERED FINAL UNLESS ALL SIGNATURES COMPLETED

TGS ENGINEERS
 804-C N. LAFAYETTE ST
 SHELBY, NC 28150
 PH (704) 476-0003
 CORP. LICENSE NO.: C-0275

REVISIONS						SHEET NO.
NO.	BY:	DATE:	NO.	BY:	DATE:	S-69
1			3			TOTAL SHEETS 79
2			4			

DRAWN BY : NMW DATE : 3/19
 CHECKED BY : RAR DATE : 6/19
 DESIGN ENGINEER OF RECORD : TBE DATE : 6/19