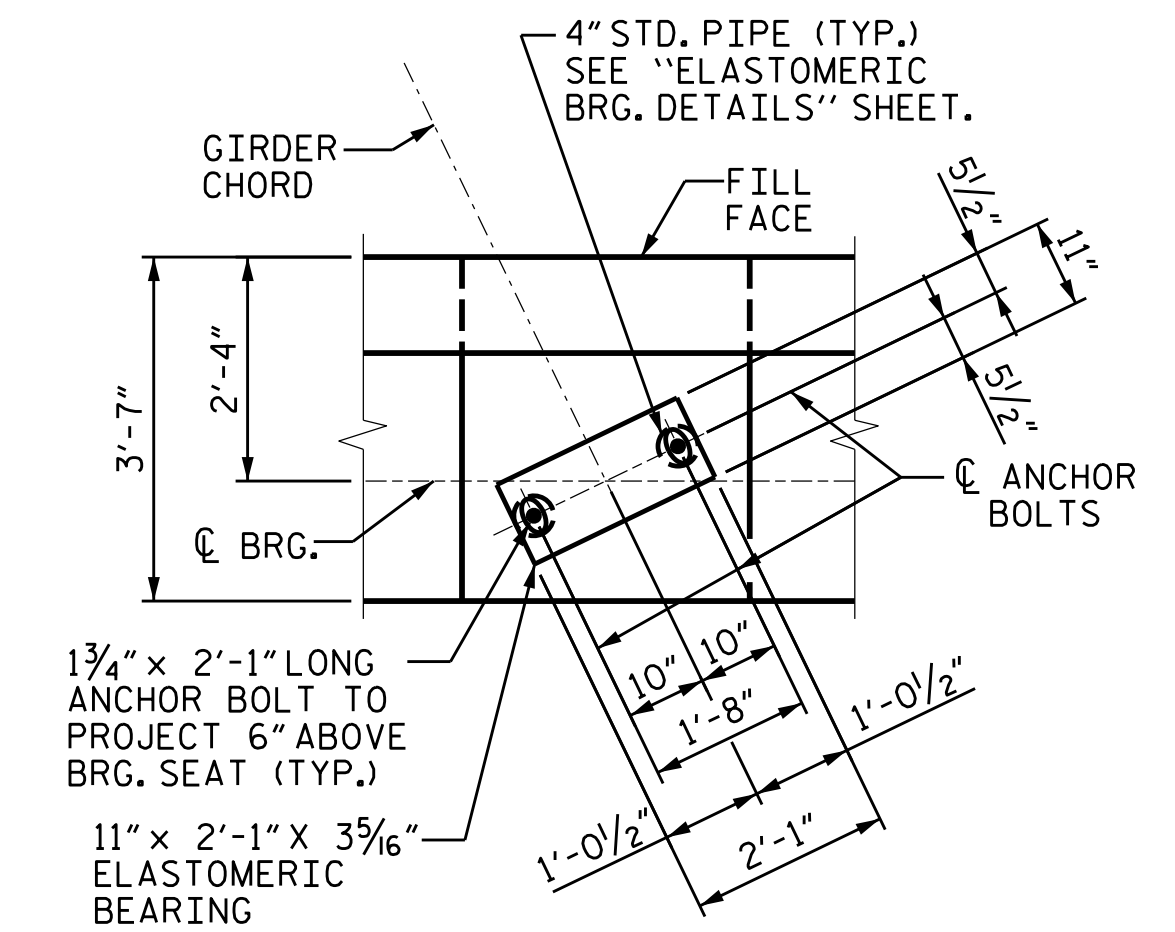


PLAN

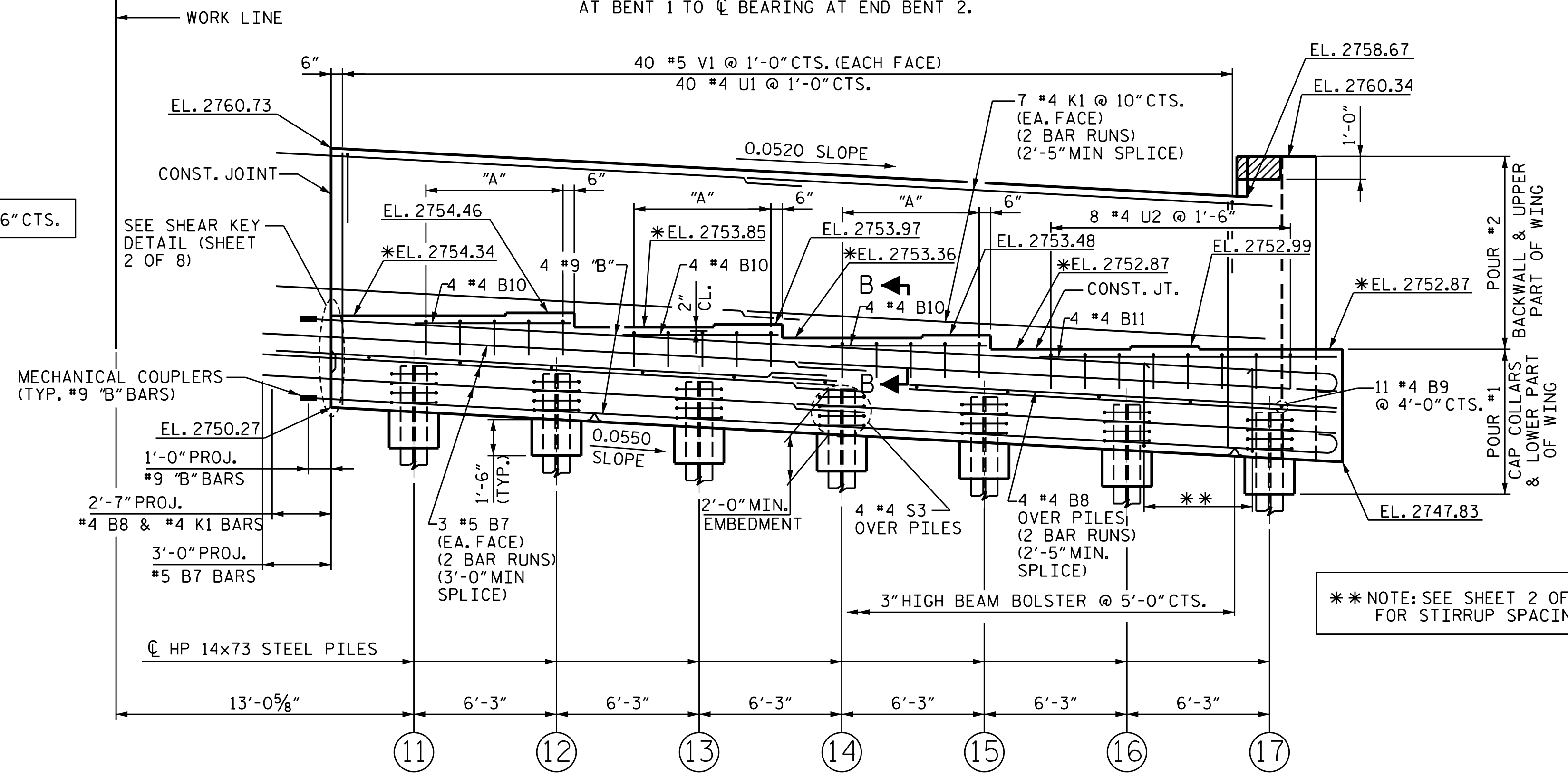
NOTE: GIRDER CHORDS SHOWN REPRESENT CHORD FROM C BEARING AT BENT 1 TO C BEARING AT END BENT 2.

NOTES :

- STIRRUPS IN CAP MAY BE SHIFTED AS NECESSARY TO CLEAR ANCHOR BOLTS.
- FOR PILE SPLICE DETAILS, SEE SHEET 5 OF 10.
- BACKWALL SHALL BE PLACED BEFORE APPLYING THE EPOXY PROTECTIVE COATING.
- THE TOP SURFACE AREAS OF THE END BENT CAP SHALL BE CURED IN ACCORDANCE WITH THE STANDARD SPECIFICATIONS EXCEPT THAT THE MEMBRANE CURING COMPOUND METHOD SHALL NOT BE USED.
- THE TOP SURFACE OF THE END BENT CAP EXCEPT THE BRIDGE SEAT BUILDUPS SHALL BE SLOPED TRANSVERSELY FROM THE FILL FACE TO THE BACK FACE AT THE RATE OF 2%.
- THE CONCRETE IN THE SHADED AREA OF THE WING SHALL BE POURED AFTER THE PARAPET IS POURED IF SLIP FORMING IS USED.
- FOR PIPE INSERT DETAILS, SEE BEARINGS SHEET.



DETAIL "A"



ELEVATION

(WING NOT SHOWN FOR CLARITY)
FOR SECTION B-B AND C-C SEE SHEET 3 OF 10
* FOR LOCATION OF ELEVATION BETWEEN BRIDGE SEAT BUILD-UPS, SEE TYPICAL SECTION

TOP OF PILE ELEVATIONS	
11	2752.13
12	2751.79
13	2751.46
14	2751.12
15	2750.78
16	2750.44
17	27450.11

PROJECT NO. R-2566BA
WATAUGA COUNTY
STATION: 164+30.00-L-

SHEET 1 OF 10

STATE OF NORTH CAROLINA
DEPARTMENT OF TRANSPORTATION
RALEIGH

SEAL 20125
ENGINEER
MARSHALL G. CHEEK, JR.
9/30/2021 | 1:43 PM EDT

DOCUMENT NOT CONSIDERED FINAL UNLESS ALL SIGNATURES COMPLETED

TGS ENGINEERS
804-C N. LAFAYETTE ST
SHELBY, NC 28150
PH (704) 476-0003
CORP. LICENSE NO.: C-0275

REVISIONS						SHEET NO.
NO.	BY:	DATE:	NO.	BY:	DATE:	S-65
1			3			TOTAL SHEETS
2			4			79

DRAWN BY : NMW DATE : 3/19
CHECKED BY : RAR DATE : 6/19
DESIGN ENGINEER OF RECORD : TBE DATE : 6/19