

131'-6" (TOTAL END BENT LENGTH)

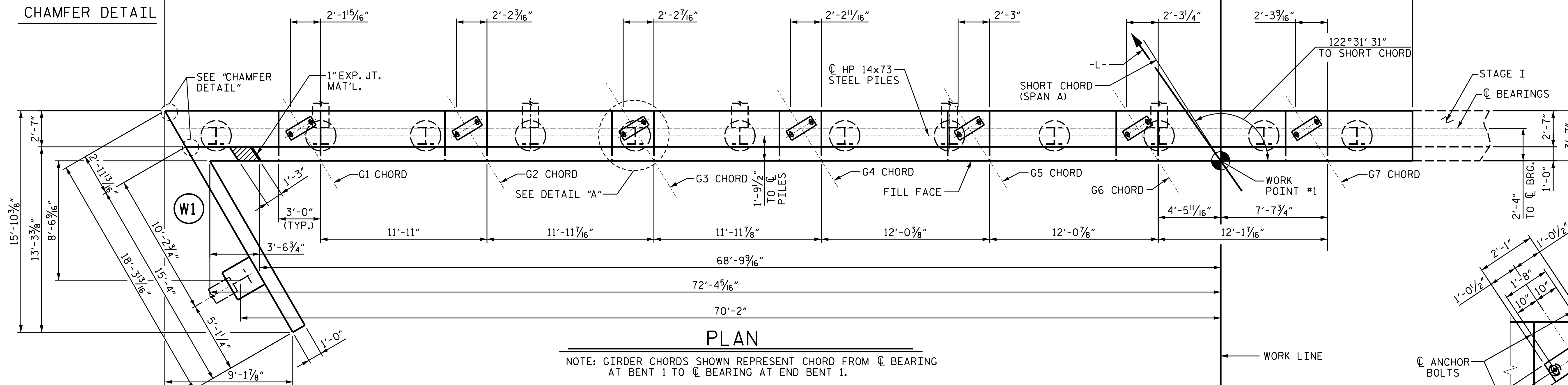
89'-3 3/4" (STAGE II)

75'-7"

13'-8 3/4"

INDICATES 3:12 PILE BATTER IN DIRECTION SHOWN.

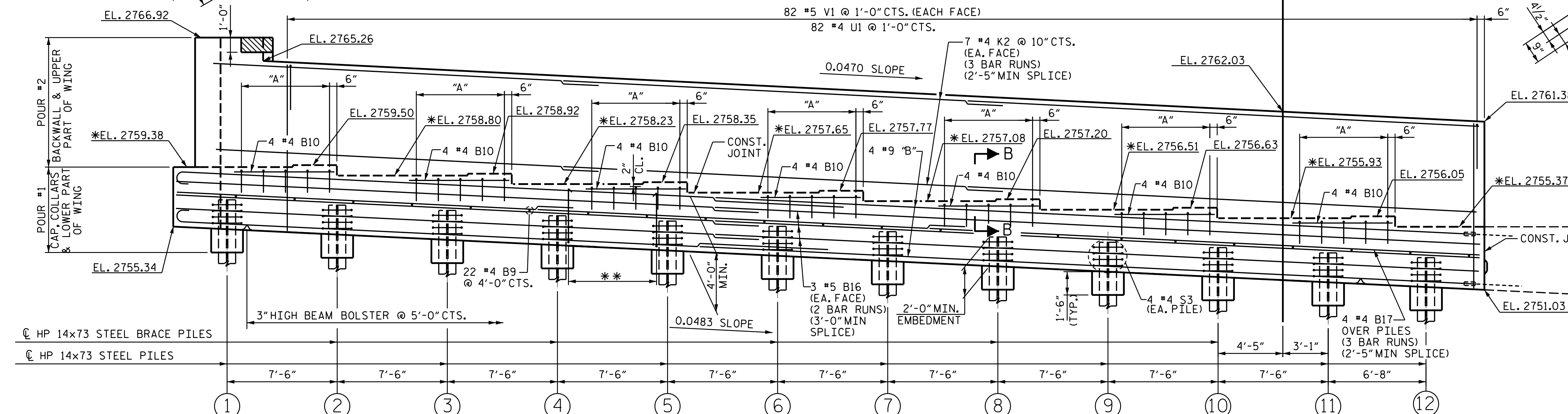
CHAMFER DETAIL



PLAN

NOTE: GIRDER CHORDS SHOWN REPRESENT CHORD FROM C BEARING AT BENT 1 TO C BEARING AT END BENT 1.

82 #5 V1 @ 1'-0" CTS. (EACH FACE)
82 #4 U1 @ 1'-0" CTS.



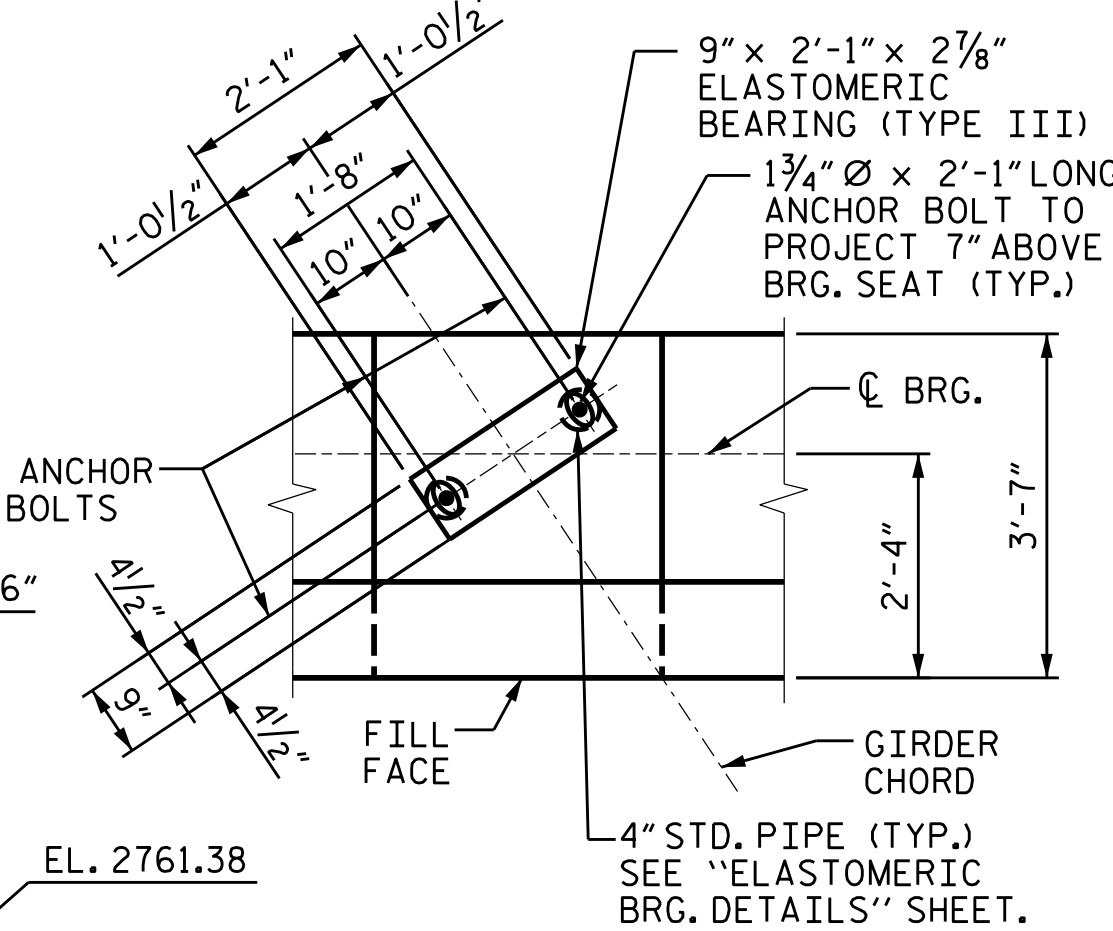
ELEVATION

(WING NOT SHOWN FOR CLARITY)
FOR SECTION B-B SEE SHEET 8 OF 10

* FOR LOCATION OF ELEVATION BETWEEN BRIDGE SEAT BUILD-UPS, SEE TYPICAL SECTION

** NOTE: SEE SHEET 7 OF 10 FOR STIRRUP SPACING

TOP OF PILE ELEVATIONS			
①	2757.19	⑦	2755.02
②	2756.83	⑧	2754.66
③	2756.47	⑨	2754.29
④	2756.10	⑩	2753.93
⑤	2755.74	⑪	2753.57
⑥	2755.38	⑫	2753.25

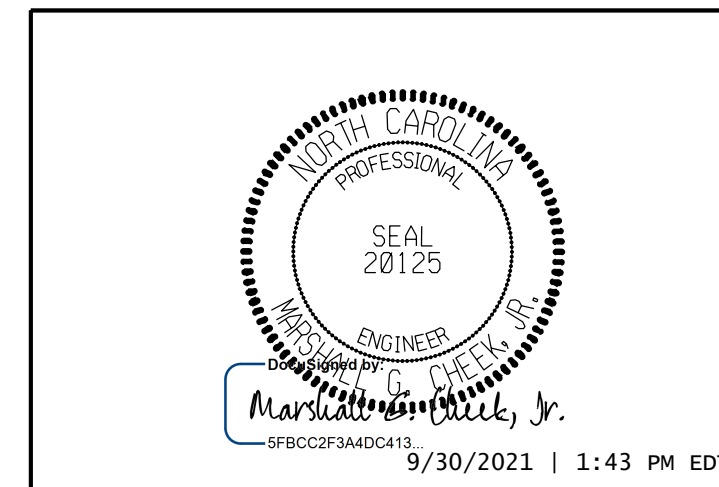


DETAIL "A"

(TYP. EA. GIRDER)
"A" = 5 #4 U2 BARS @ 1'-6" CTS.

PROJECT NO. R-2566BA
WATAUGA COUNTY
STATION: 164+30.00-L-

SHEET 6 OF 10



STATE OF NORTH CAROLINA
DEPARTMENT OF TRANSPORTATION
RALEIGH
SUBSTRUCTURE
END BENT 1
STAGE II

DRAWN BY : NMW DATE : 3/19
CHECKED BY : RAR DATE : 6/19
DESIGN ENGINEER OF RECORD : TBE DATE : 6/19

DOCUMENT NOT CONSIDERED FINAL UNLESS ALL SIGNATURES COMPLETED
TGS ENGINEERS
804-C N. LAFAYETTE ST
SHELBY, NC 28150
PH (704) 476-0003
CORP. LICENSE NO.: C-0275

REVISIONS						SHEET NO.
NO.	BY:	DATE:	NO.	BY:	DATE:	S-56
1			3			TOTAL SHEETS 79
2			4			