

**PLAN**

NOTE: GIRDER CHORDS SHOWN REPRESENT CHORD FROM C BEARING AT BENT 1 TO C BEARING AT END BENT 1.

**NOTES :**

STIRRUPS IN CAP MAY BE SHIFTED AS NECESSARY TO CLEAR ANCHOR BOLTS.

FOR PILE SPLICE DETAILS, SEE SHEET 5 OF 10.

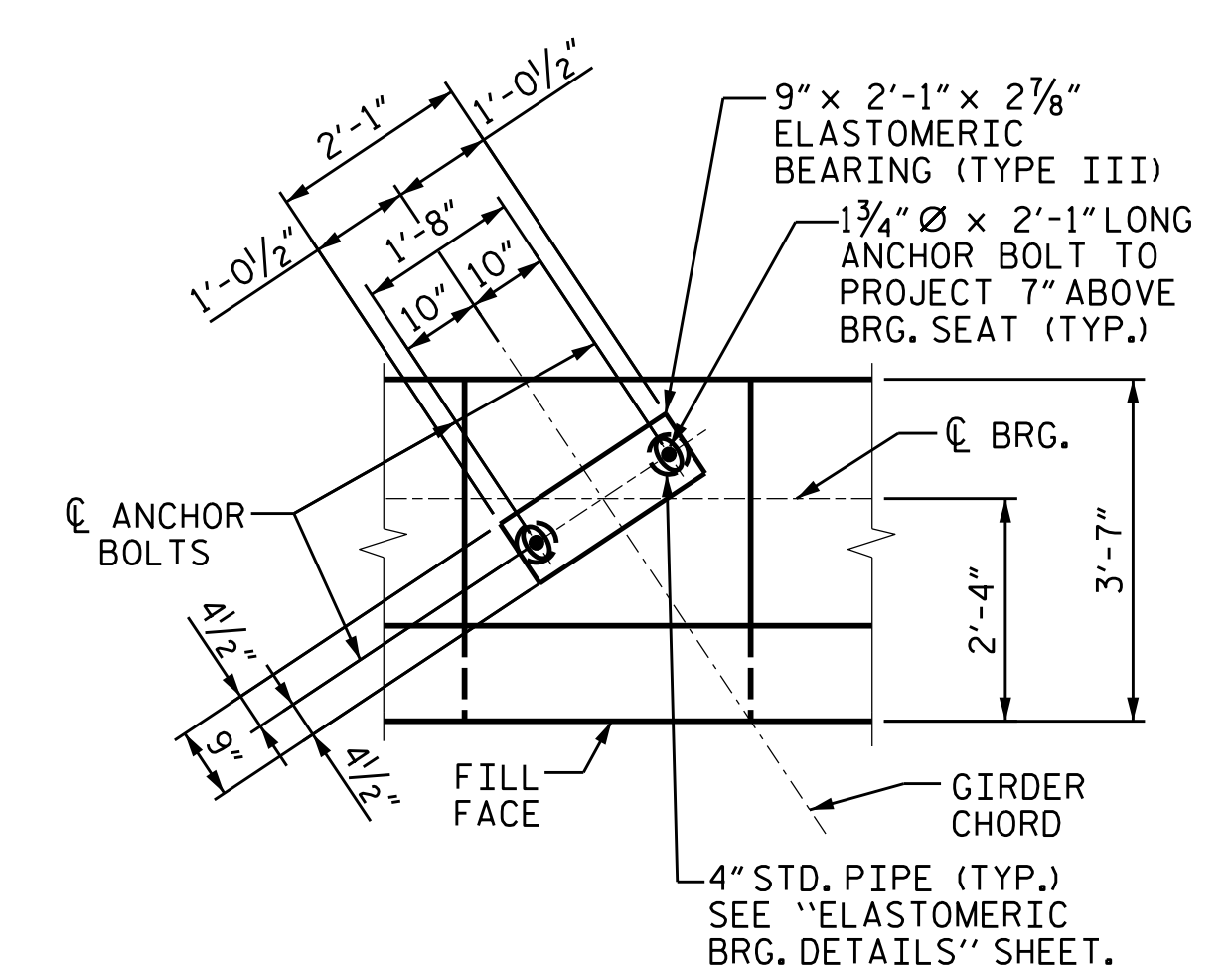
BACKWALL SHALL BE PLACED BEFORE APPLYING THE EPOXY PROTECTIVE COATING.

THE TOP SURFACE AREAS OF THE END BENT CAP SHALL BE CURED IN ACCORDANCE WITH THE STANDARD SPECIFICATIONS EXCEPT THAT THE MEMBRANE CURING COMPOUND METHOD SHALL NOT BE USED.

THE TOP SURFACE OF THE END BENT CAP EXCEPT THE BRIDGE SEAT BUILDUPS SHALL BE SLOPED TRANSVERSELY FROM THE FILL FACE TO THE BACK FACE AT THE RATE OF 2%.

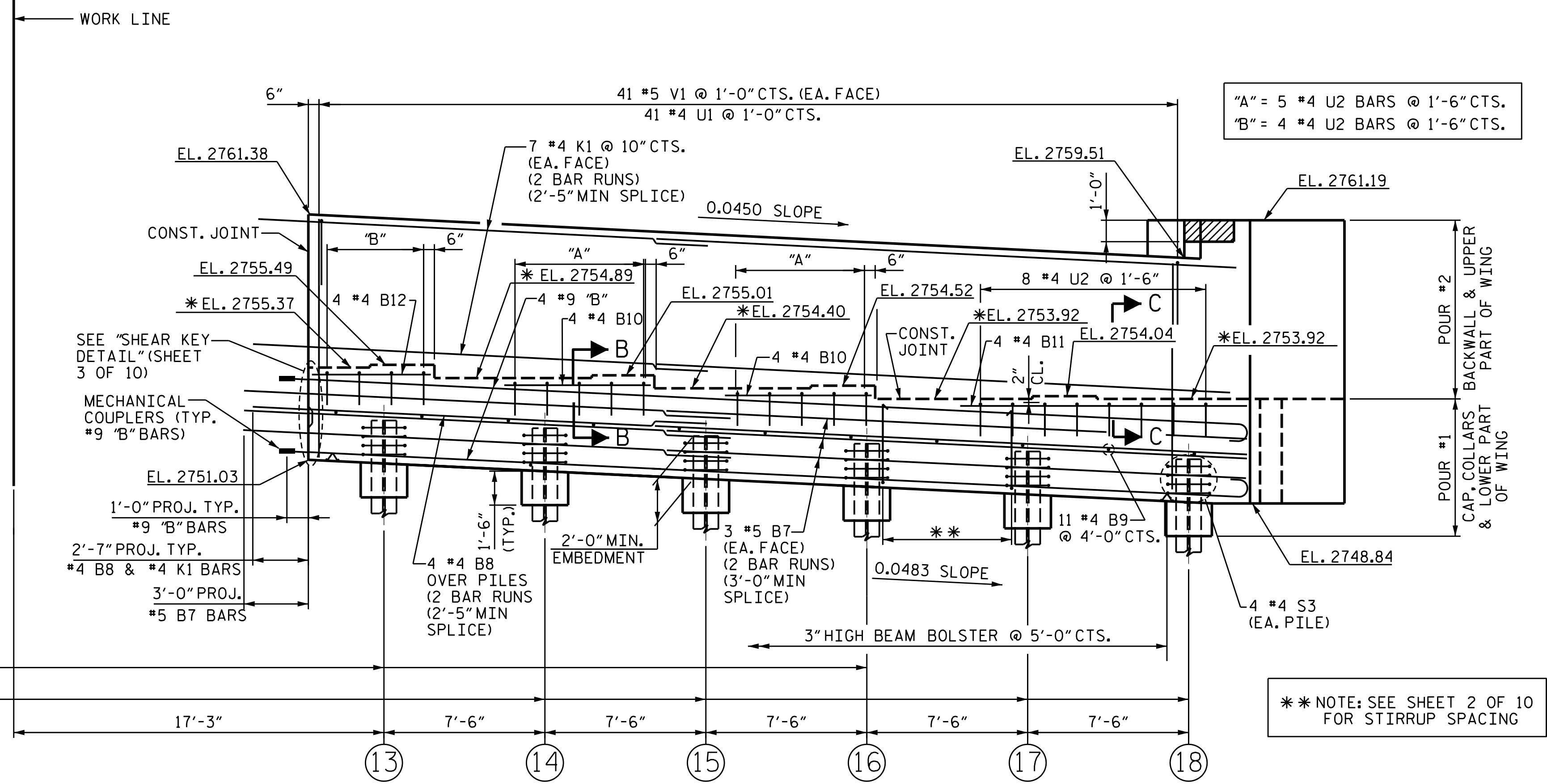
THE CONCRETE IN THE SHADED AREA OF THE WING SHALL BE POURED AFTER THE PARAPET IS POURED IF SLIP FORMING IS USED.

FOR PIPE INSERT DETAILS, SEE BEARINGS SHEET.



**DETAIL "A"**  
(TYP. EA. GIRDER)

| TOP OF PILE ELEVATIONS |         |
|------------------------|---------|
| 13                     | 2752.88 |
| 14                     | 2752.52 |
| 15                     | 2752.16 |
| 16                     | 2751.80 |
| 17                     | 2751.44 |
| 18                     | 2751.07 |



**ELEVATION**

(WING NOT SHOWN FOR CLARITY)  
FOR SECTION B-B AND C-C SEE SHEET 3 OF 10  
\*FOR LOCATION OF ELEVATION BETWEEN BRIDGE SEAT BUILD-UPS, SEE TYPICAL SECTION

PROJECT NO. R-2566BA  
WATAUGA COUNTY  
STATION: 164+30.00-L-  
SHEET 1 OF 10

STATE OF NORTH CAROLINA  
DEPARTMENT OF TRANSPORTATION  
RALEIGH

PROFESSIONAL ENGINEER  
SEAL 20125  
MARSHALL C. CHEEK, JR.  
9/30/2021 | 1:43 PM EDT

DOCUMENT NOT CONSIDERED FINAL UNLESS ALL SIGNATURES COMPLETED

TGS ENGINEERS  
804-C N. LAFAYETTE ST  
SHELBY, NC 28150  
PH (704) 476-0003  
CORP. LICENSE NO.: C-0275

| REVISIONS |     |       |     |     |       | SHEET NO.    |
|-----------|-----|-------|-----|-----|-------|--------------|
| NO.       | BY: | DATE: | NO. | BY: | DATE: | S-51         |
| 1         |     |       | 3   |     |       | TOTAL SHEETS |
| 2         |     |       | 4   |     |       | 79           |

DRAWN BY : NMW DATE : 3/19  
CHECKED BY : RAR DATE : 6/19  
DESIGN ENGINEER OF RECORD : TBE DATE : 6/19