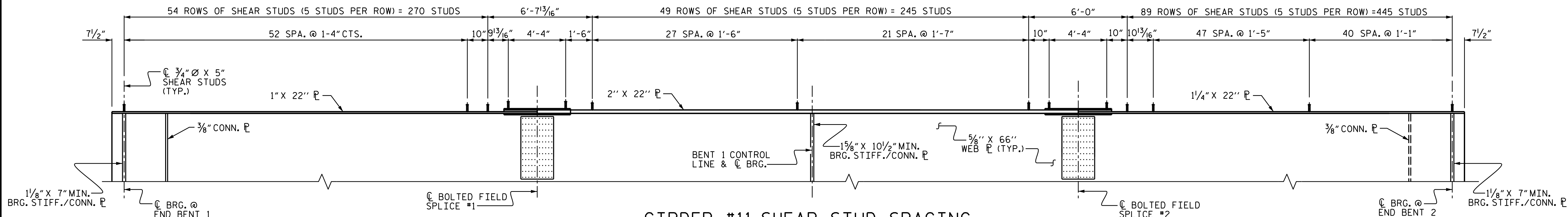


GIRDER #10 SHEAR STUD SPACING

FOR STUDS ON BOLTED FIELD SPLICE PLATE, SEE "BOLTED FIELD SPLICE DETAILS" SHEET 5 OR 6 OF 10.

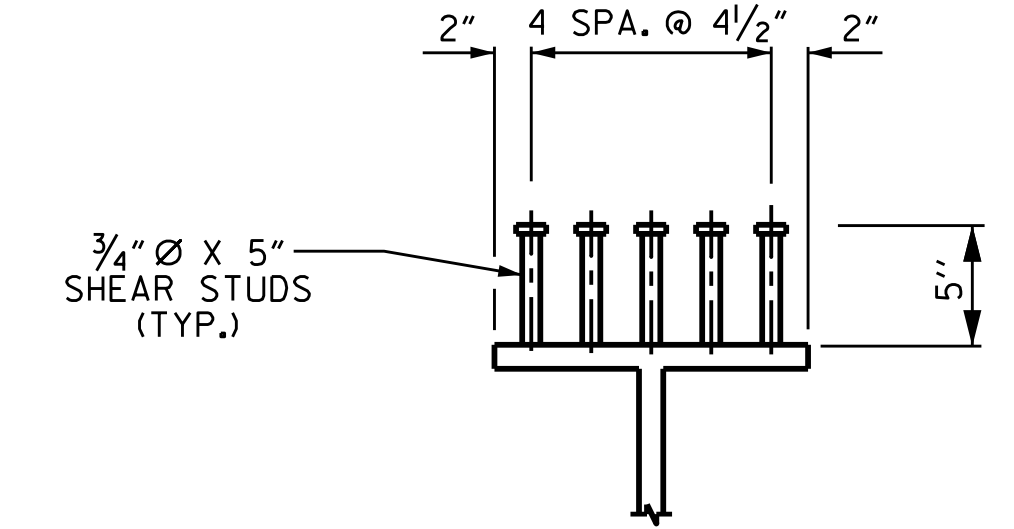


GIRDER #11 SHEAR STUD SPACING

FOR STUDS ON BOLTED FIELD SPLICE PLATE, SEE "BOLTED FIELD SPLICE DETAILS" SHEET 5 OR 6 OF 10.

NOTES

- ALL STRUCTURAL STEEL SHALL BE AASHTO M270 GRADE 50W AND PAINTED IN ACCORDANCE WITH SYSTEM 5 OR SYSTEM 6 OF THE STRUCTURAL STEEL SHOP COATINGS PROGRAM AND SECTION 442-8 OF THE STANDARD SPECIFICATIONS UNLESS OTHERWISE NOTED ON THE PLANS.
- ALL DIMENSIONS SHOWN ARE HORIZONTAL OR VERTICAL, UNLESS OTHERWISE NOTED.
- ALL FIELD CONNECTIONS TO BE 7/8" DIA. HIGH STRENGTH BOLTS UNLESS OTHERWISE NOTED.
- BEARING STIFFENERS ARE TO BE PLACED NORMAL TO THE WEB OF THE GIRDER AND SHALL BE PLUMB.
- SHOP SPLICES ARE PERMITTED TO LIMIT THE MAXIMUM REQUIRED FLANGE PIECE LENGTHS TO 60 FEET AND WEB PIECE LENGTHS TO 45 FEET. PERMITTED FLANGE AND WEB SHOP SPLICES SHALL NOT BE LOCATED WITHIN 15 FEET OF MAXIMUM DEAD LOAD DEFLECTION (NOR WITHIN 15 FEET OF INTERMEDIATE BEARINGS OF CONTINUOUS UNITS). KEEP 2 FEET MINIMUM BETWEEN WEB AND FLANGE SHOP SPLICES. KEEP 6" MINIMUM BETWEEN CONNECTOR PLATE OR TRANSVERSE STIFFENER WELDS AND WEB OR FLANGE SHOP SPLICES.
- STUDS ON GIRDERS MAY BE SHIFTED UP TO 1" IF NECESSARY TO CLEAR FLANGE SPLICE WELD.
- TENSION ON THE AASHTO A325 BOLTS SHALL BE CALIBRATED USING DIRECT TENSION INDICATOR WASHERS.
- END OF GIRDERS SHALL BE PLUMB.
- BEARING STIFFENER MAY REQUIRE COPING IF WIDER THAN BOTTOM FLANGE TO AVOID INTERFERENCE WITH THE ANCHOR BOLT.
- THE CONTRACTOR SHALL MAINTAIN STABILITY OF THE CURVED GIRDERS UNTIL ALL BOLTED FIELD SPLICES AND DIAPHRAGM CONNECTIONS HAVE BEEN COMPLETED.
- NUTS ON BOLTS FOR CONNECTING DIAPHRAGM TO CONNECTOR PLATE IN BAY 7 SHALL REMAIN LOOSE FOR PURPOSE OF ADJUSTMENT UNTIL BOTH SIDES OF SLAB HAVE BEEN POURED.



SHEAR STUD DETAILS

PROJECT NO. R-2566BA
WATAUGA COUNTY
 STATION: 164+30.00 -L-

SHEET 10 OF 10

STATE OF NORTH CAROLINA
 DEPARTMENT OF TRANSPORTATION
 RALEIGH

SEAL 20125
 ENGINEER
 M. B. CHECK, JR.
 9/30/2021 1:43 PM EDT

DOCUMENT NOT CONSIDERED FINAL UNLESS ALL SIGNATURES COMPLETED

TGS ENGINEERS
 706 HILLSBOROUGH STREET
 SUITE 200
 RALEIGH, NC 27603
 PH (919) 773-8887
 CORP. LICENSE NO.: C-0275

| REVISIONS | | | | | | SHEET NO. |
|-----------|-----|-------|-----|-----|-------|-----------------|
| NO. | BY: | DATE: | NO. | BY: | DATE: | S-26 |
| 1 | | | 3 | | | TOTAL SHEETS 79 |
| 2 | | | 4 | | | |

| | | | |
|----------------------------|----------------|--------|------|
| DRAWN BY : | S. B. WILLIAMS | DATE : | 4-19 |
| CHECKED BY : | MGC | DATE : | 5-19 |
| DESIGN ENGINEER OF RECORD: | RDE | DATE : | 9-21 |