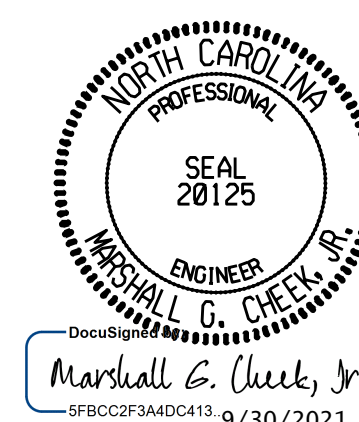


ERECTION NOTES

INITIAL SET WILL REQUIRE PLACEMENT OF TWO ADJACENT GIRDERS WITH DIAPHRAGMS.
 THE STRUCTURAL STEEL SHALL BE SUPPORTED DURING ERECTION IN ITS CAMBERED POSITION. TEMPORARY BENT MAY BE USED IN SPAN "A".
 TEMPORARY BENT SHALL SUPPORT ALL GIRDERS IN THE TYPICAL SECTION.
 TEMPORARY BENT SHALL REMAIN IN PLACE UNTIL ALL CROSSFRAMES ARE IN PLACE AND HIGH STRENGTH BOLTS ARE TIGHTENED.
 THE CONTRACTOR'S ERECTION PLANS SHALL INCLUDE A METHOD OF TEMPORARY BENT REMOVAL THAT WILL UNIFORMLY APPLY THE STRUCTURAL STEEL WEIGHT TO THE GIRDERS AND DIAPHRAGMS.
 THE CONTRACTOR MAY SUBMIT ALTERNATE ERECTION METHODS. PLANS FOR SUCH ERECTION METHODS SHALL BE APPROVED BY THE ENGINEER.
 PLANS FOR TEMPORARY BENT, ERECTION SEQUENCE, AND TEMPORARY BENT REMOVAL SHALL BE SUBMITTED TO THE ENGINEER FOR REVIEW.
 DURING THE GIRDER ERECTION PROCEDURE, THE CONTRACTOR IS RESPONSIBLE FOR PROVIDING TEMPORARY LATERAL BRACING AND OTHER MEANS OF SUPPORTING, AS REQUIRED, TO ENSURE STABILITY OF THE GIRDERS, TO AVOID UPLIFT OF THE GIRDERS AT THE TEMPORARY BENT AND TO MAINTAIN PLUMBNESS OF THE GIRDER WEBS.
 THE CONTRACTOR IS RESPONSIBLE FOR DESIGNING THE TEMPORARY BENT, THE DESIGN SHALL FOLLOW THE AASHTO GUIDE DESIGN SPECIFICATIONS FOR BRIDGE TEMPORARY WORKS, 1995 AND SHALL BE COMPLETED BY A PROFESSIONAL ENGINEER REGISTERED IN NORTH CAROLINA. THE CONTRACTOR SHALL SUBMIT SIGNED AND SEALED WORKING DRAWINGS AND CALCULATIONS FOR APPROVAL BY THE ENGINEER.
 NO SEPARATE MEASUREMENT OR PAYMENT WILL BE MADE FOR PROVIDING THE TEMPORARY BENT. THE COST FOR ALL MATERIALS, EQUIPMENT, TOOLS, LABOR AND ANY INCIDENTALS NECESSARY TO PROVIDE THE TEMPORARY BENT SHALL BE CONSIDERED INCIDENTAL TO THE BID PRICE FOR STRUCTURAL STEEL.
 FOR TEMPORARY BENT, SEE SPECIAL PROVISIONS.

PROJECT NO. R-2566BA
WATAUGA COUNTY
 STATION: 164+30.00 -L-



STATE OF NORTH CAROLINA
 DEPARTMENT OF TRANSPORTATION
 RALEIGH
**GIRDER ERECTION
 DETAILS**

DRAWN BY : STM DATE : 04/19
 CHECKED BY : MGC DATE : 05/19
 DESIGN ENGINEER OF RECORD: RDE DATE : 9/21

DOCUMENT NOT CONSIDERED FINAL
 UNLESS ALL SIGNATURES COMPLETED
TGS ENGINEERS
 706 HILLSBOROUGH STREET
 SUITE 200
 RALEIGH, NC 27603
 PH (919) 773-8887
 CORP. LICENSE NO.: C-0275

REVISIONS						SHEET NO.
BY:	DATE:	NO.	BY:	DATE:		
		3				S-6
		4				TOTAL SHEETS 79