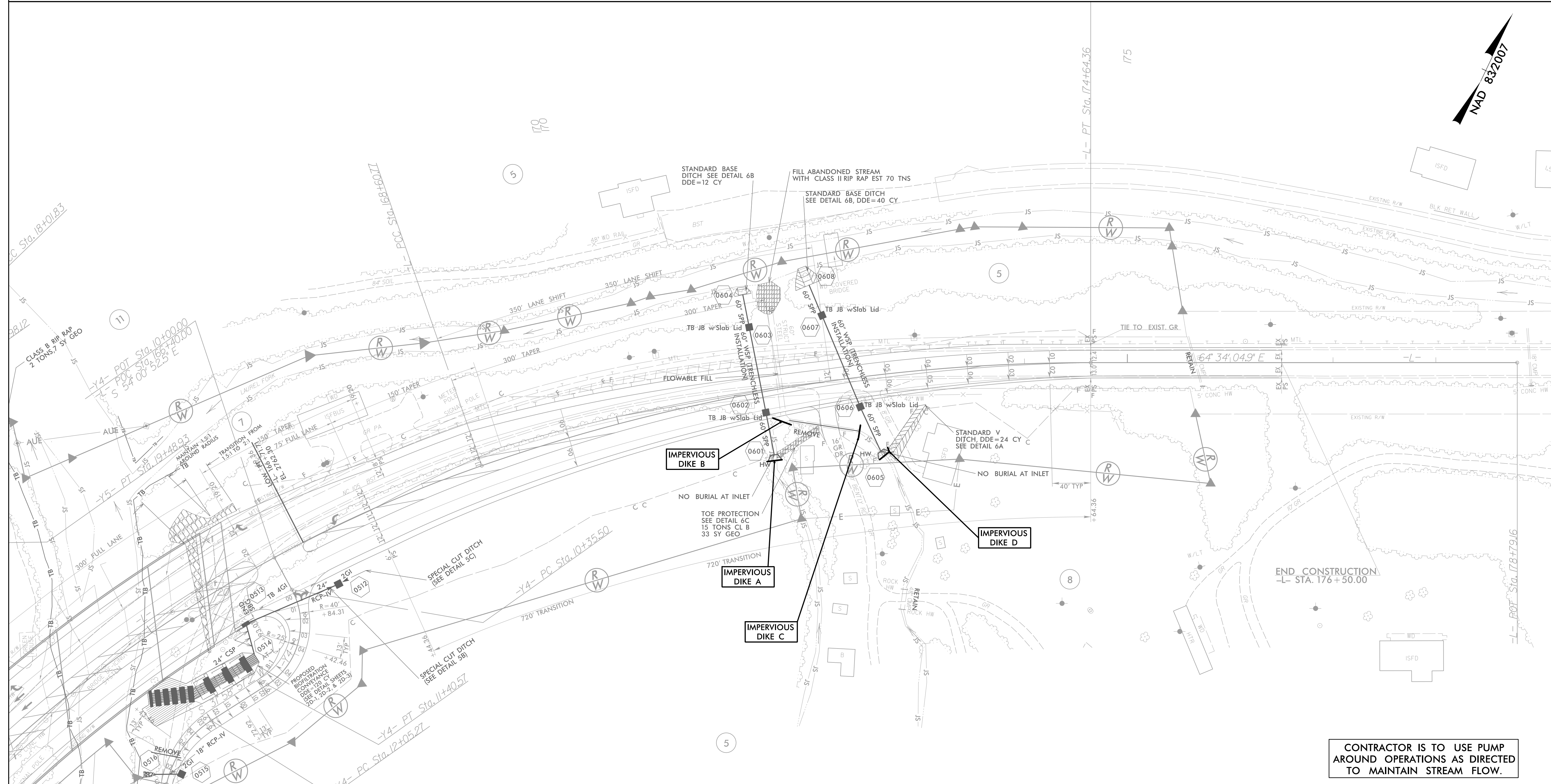


PROJECT REFERENCE NO. R-2566BA	SHEET NO. EC-07/CONST.6
RW SHEET NO.	
ROADWAY DESIGN ENGINEER	HYDRAULICS ENGINEER

PIPE CONSTRUCTION SEQUENCE STA. 171+61 -L-

- UTILIZE SPECIAL STILLING BASIN(S) AS NEEDED THROUGHOUT PIPE CONSTRUCTION.
- INSTALL BOTH PROPOSED 60" WSPs (TRENCHLESS INSTALLATION). CONSTRUCT TB JBs WITH SLAB LIDS, INSTALL DOWNSTREAM END 60" SPPs, AND CONSTRUCT OUTLET CHANNEL STANDARD BASE DITCHES.
- CONSTRUCT IMPERVIOUS DIKES A AND B. UTILIZE A PUMP AROUND OPERATION TO MAINTAIN STREAM FLOW THROUGH THE EXISTING 60" SSP.
- INSTALL WESTERN 60" UPSTREAM END SPP AND HEADWALL.
- REMOVE IMPERVIOUS DIKE A, ALLOWING FLOW THROUGH THE COMPLETED WESTERN PIPE INSTALLATION.
- CONSTRUCT IMPERVIOUS DIKES C AND D. UTILIZE A PUMP AROUND OPERATION TO MAINTAIN STREAM FLOW THROUGH THE EXISTING 36" CMP AND EXISTING 60" SPP.
- INSTALL EASTERN 60" UPSTREAM END SPP AND HEADWALL.
- REMOVE IMPERVIOUS DIKES B, C, AND D, ALLOWING FLOW THROUGH THE COMPLETED EASTERN PIPE INSTALLATION.
- REMOVE ANY REMAINING SPECIAL STILLING BASIN(S), AND COMPLETE ROADWAY.



CONTRACTOR IS TO USE PUMP AROUND OPERATIONS AS DIRECTED TO MAINTAIN STREAM FLOW.