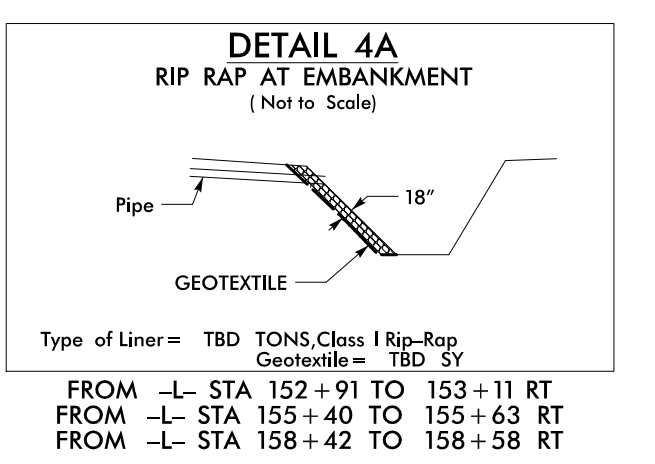
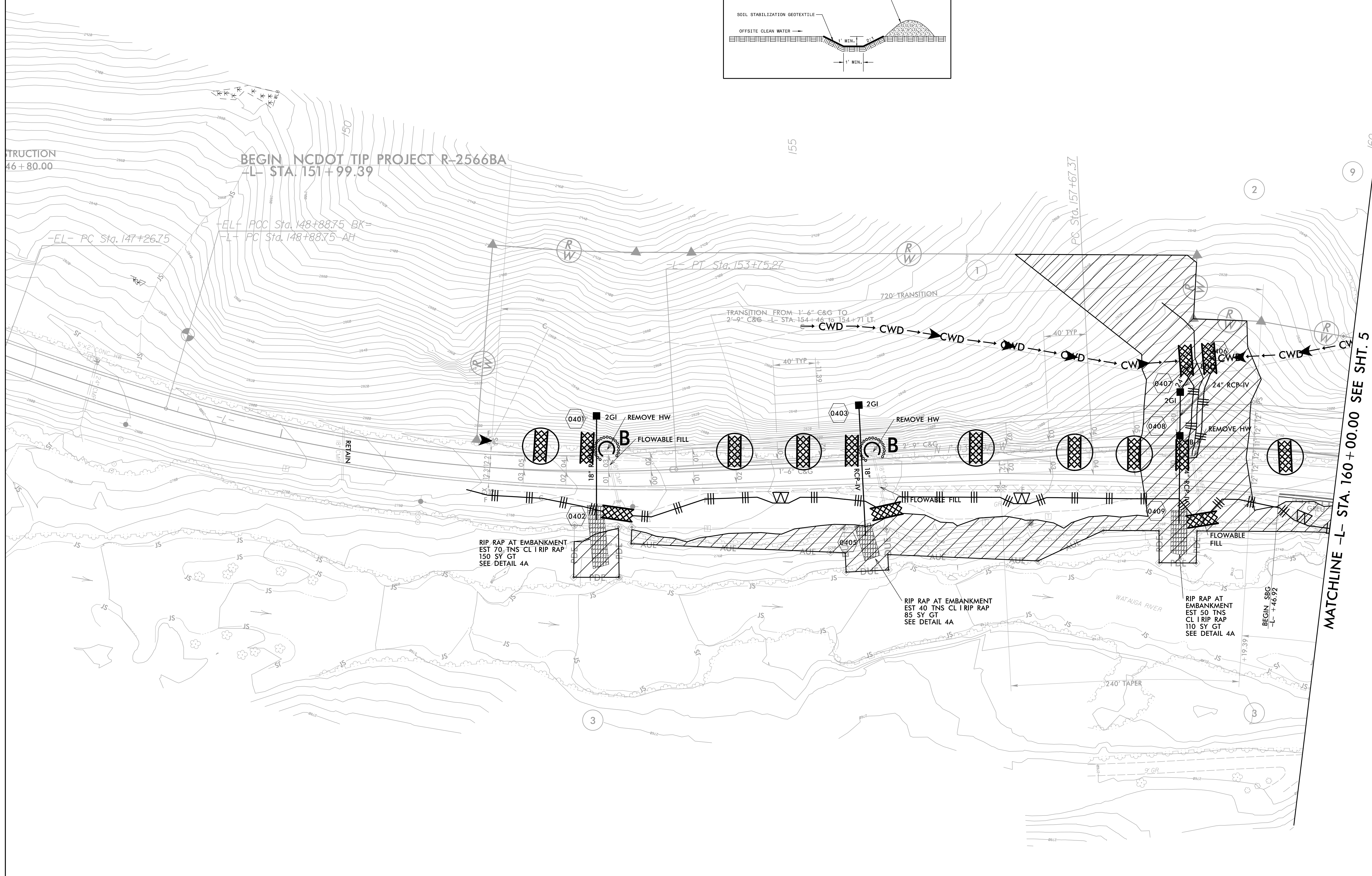
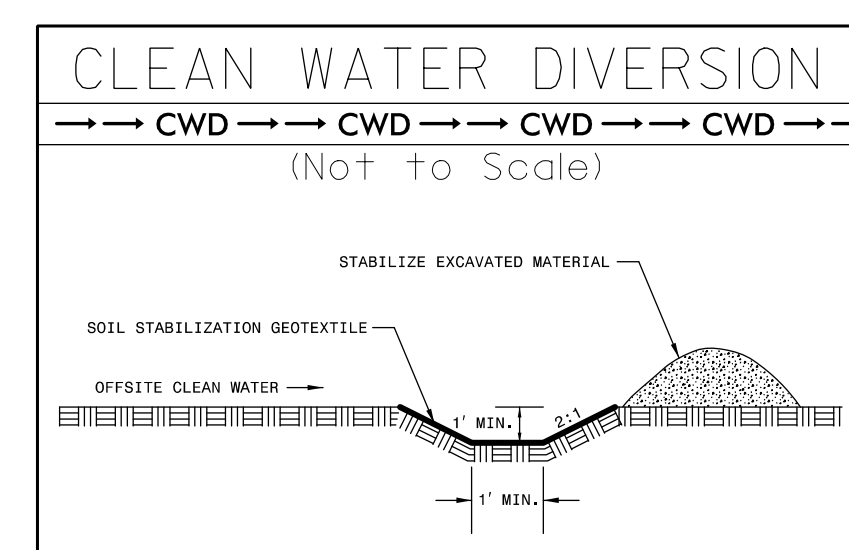


NAD 83/2007

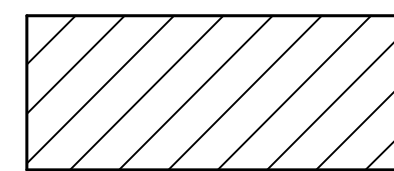


-EL-	-L-	-L-
PI Sta 148+07.77	PI Sta 151+34.38	PI Sta 163+46.06
$\Delta = 3^{\circ} 23' 59.8''$ (LT)	$\Delta = 19^{\circ} 29' 36.7''$ (LT)	$\Delta = 46^{\circ} 24' 19.4''$ (RT)
D = 2' 05' 55.5"	D = 4' 00' 24.1"	D = 4' 14' 38.9"
L = 162.00'	L = 486.52'	L = 1,093.40'
T = 81.02'	T = 245.64'	T = 578.69'
R = 2,730.00'	R = 1,430.00'	R = 1,350.00'
SE = EXIST.	SE = 0.06 FT/FT	SE = 0.06 FT/FT
RO = EXIST.	RO = SEE PLANS	RO = SEE PLANS

**CLEARING AND GRUBBING EROSION CONTROL FOR CONSTRUCTION SHEET 4**

**NOTE:** PLACE TEMPORARY ROCK SEDIMENT DAMS TYPE - B AND TEMPORARY ROCK SILT CHECKS TYPE - A AT DRAINAGE OUTLETS.

**INSTALL PIPE(S) IN JURISDICTIONAL AREAS WITHOUT IMPACTING STREAM UNTIL AREA STABILIZED AND ACCORDING TO NCDOT BEST MANAGEMENT PRACTICES FOR CONSTRUCTION AND MAINTENANCE ACTIVITIES MANUAL.**



**ENVIRONMENTALLY SENSITIVE AREA**  
SEE PROJECT SPECIAL PROVISIONS