

-Y5-		
PI Sta 16+59.54	PI Sta 17+55.18	PI Sta 18+51.22
$\Delta = 9^{\circ}01'25.6"$ (RT)	$\Delta = 20^{\circ}47'33.1"$ (RT)	$\Delta = 31^{\circ}31'28.0"$ (RT)
D = 9'23' 33.9"	D = 22'02' 12.6"	D = 32'44' 25.6"
L = 96.07'	L = 94.35'	L = 96.29'
T = 48.14'	T = 47.70'	T = 49.40'
R = 610.00'	R = 175.00'	R = 175.00'
SE = 0.06 FT/FT	SE = 0.06 FT/FT	SE = 0.06 FT/FT
RO = SEE PLANS	RO = SEE PLANS	RO = SEE PLANS
-Y5-		
PI Sta 19+23.61	PI Sta 21+24.63	
$\Delta = 1^{\circ}38'44.0"$ (RT)	$\Delta = 43^{\circ}15'37.0"$ (LT)	
D = 22'55' 05.9"	D = 60'18' 40.8"	
L = 50.81'	L = 71.73'	
T = 25.49'	T = 37.67'	
R = 250.00'	R = 95.00'	
SE = EXIST.	SE = 0.02 FT/FT	
RO = SEE PLANS	RO = SEE PLANS	

-Y4-	
PI Sta 11+00.77	PI Sta 12+46.08
$\Delta = 85^{\circ}59'49.7"$ (RT)	$\Delta = 44^{\circ}23'57.2"$ (LT)
D = 81'51' 04.0"	D = 57'17' 44.8"
L = 105.07'	L = 77.49'
T = 65.27'	T = 40.81'
R = 70.00'	R = 100.00'
SE = 0.04 FT/FT	SE = 0.04 FT/FT
RO = SEE PLANS	RO = SEE PLANS

PI Sta 163+46.06	PI Sta 171+65.43
$\Delta = 46^{\circ}24'19.4"$ (RT)	$\Delta = 19^{\circ}12'46.1"$ (RT)
D = 4'14' 38.9"	D = 3'10' 59.2"
L = 1.093.40'	L = 603.59'
T = 578.69'	T = 304.65'
R = 1,350.00'	R = 1,800.00'
SE = 0.06 FT/FT	SE = 0.06 FT/FT
RO = SEE PLANS	RO = SEE PLANS

- NOTES:**
- IF FURTHER INFORMATION REGARDING PROJECT CONTROL IS NEEDED, PLEASE CONTACT THE LOCATION AND SURVEYS UNIT.
 - PROJECT CONTROL WAS ESTABLISHED USING GNSS, THE GLOBAL NAVIGATION SATELLITE SYSTEM.

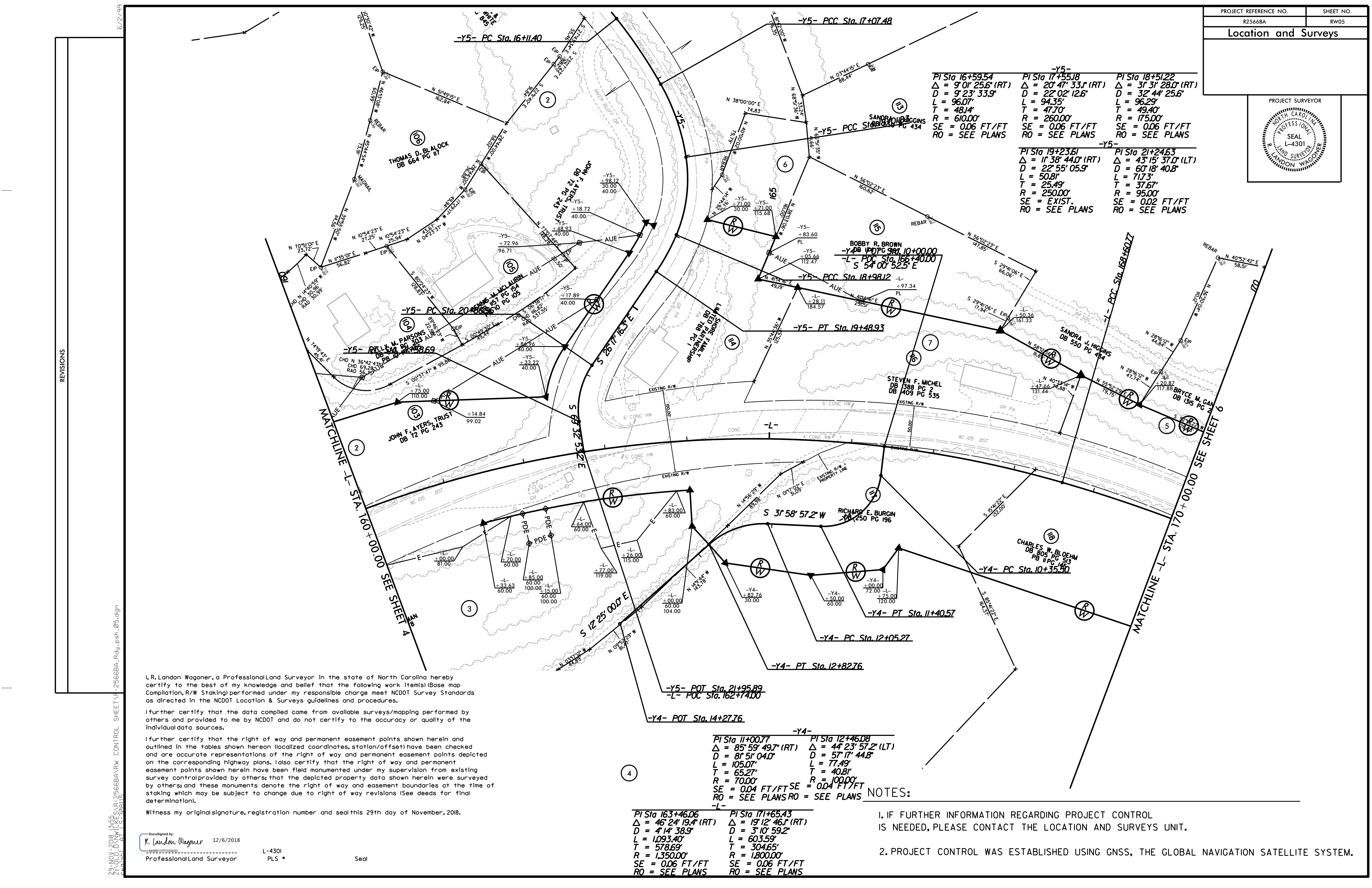
I, R. Landon Wagoner, a Professional Land Surveyor in the state of North Carolina hereby certify to the best of my knowledge and belief that the following work item(s) (Base map Compilation, R/W Staking) performed under my responsible charge meet NCDOT Survey Standards as directed in the NCDOT Location & Surveys guidelines and procedures.

I further certify that the data compiled came from available surveys/mapping performed by others and provided to me by NCDOT and do not certify to the accuracy or quality of the individual data sources.

I further certify that the right of way and permanent easement points shown herein and outlined in the tables shown hereon (localized coordinates, station/offset) have been checked and are accurate representations of the right of way and permanent easement points depicted on the corresponding highway plans. I also certify that the right of way and permanent easement points shown herein have been field monumented under my supervision from existing survey control provided by others; that the depicted property data shown herein were surveyed by others; and these monuments denote the right of way and easement boundaries at the time of staking which may be subject to change due to right of way revisions (See deeds for final determination).

Witness my original signature, registration number and seal this 29th day of November, 2018.

DocuSigned by:
R. Landon Wagoner 12/6/2018
 L-4301
 Professional Land Surveyor PLS Seal



REVISIONS

6/2/199
 29-NOV-2018 13:45 R:\2566BA\RW CONTROL SHEET\F-2566BA-RW-psh_05.dgn
 2566BA-RW-2018-11-29 13:45 R:\2566BA\RW CONTROL SHEET\F-2566BA-RW-psh_05.dgn