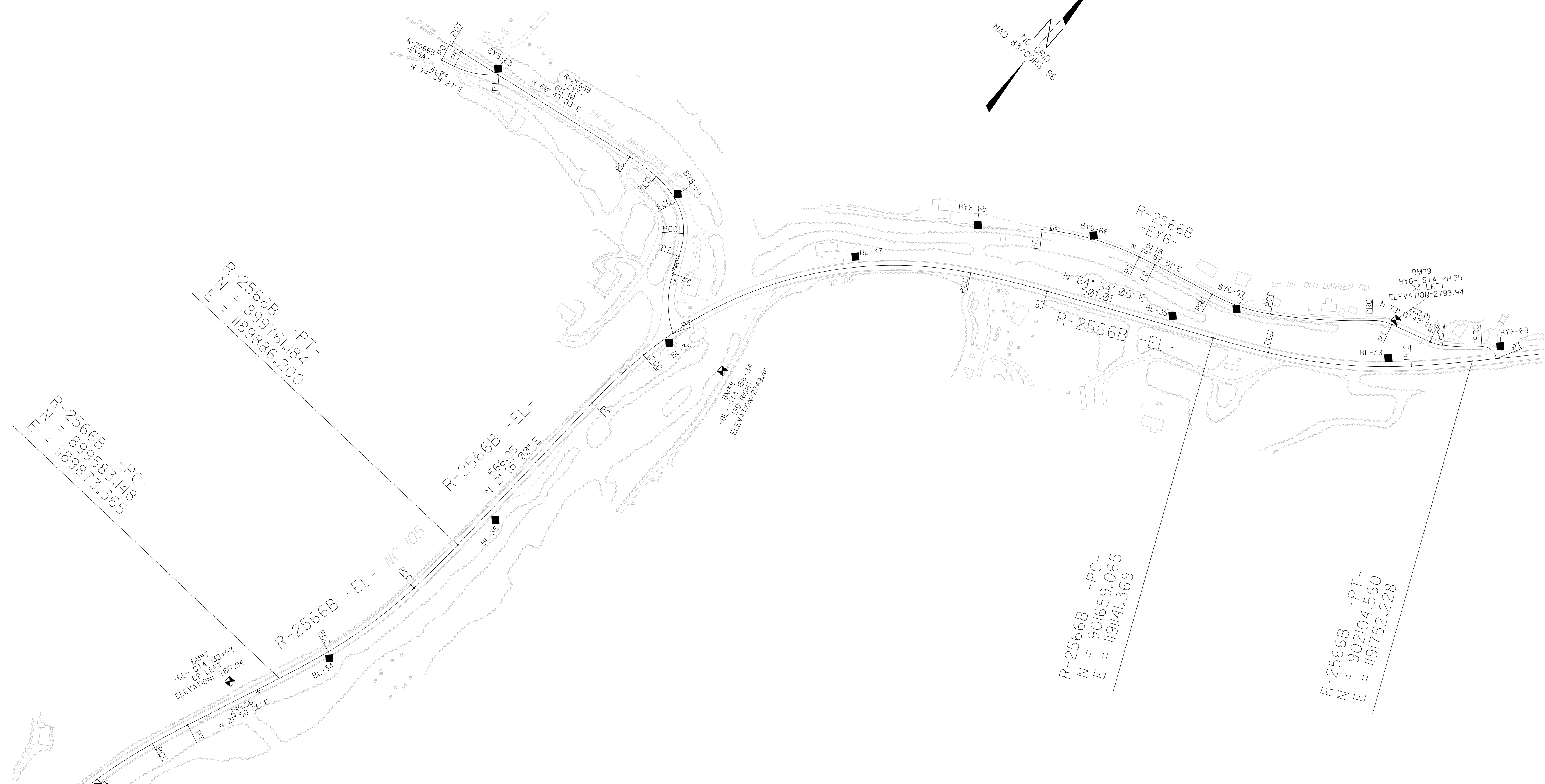
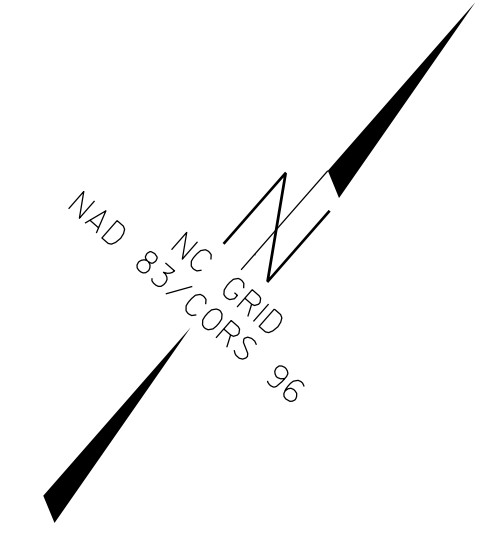


# SURVEY CONTROL SHEET

**W/ EXISTING CENTERLINE ALIGNMENTS PRIOR TO CONSTRUCTION**

6/2/19

REVISIONS



03 JUN 2021 10:40  
 25666BA control sheet\25666BA\_1s\_RW02C-1.dgn  
 6/2/19 3:00 PM  
 6/2/19

- NOTES:**
1. PROJECT CONTROL WAS ESTABLISHED USING GNSS, THE GLOBAL NAVIGATION SATELLITE SYSTEM.
  2. THE SURVEY CONTROL DATA FOR THIS PROJECT HAS BEEN COMPILED FROM VARIOUS SOURCES. IF FURTHER INFORMATION REGARDING PROJECT CONTROL IS NEEDED, PLEASE CONTACT THE LOCATION AND SURVEYS UNIT.