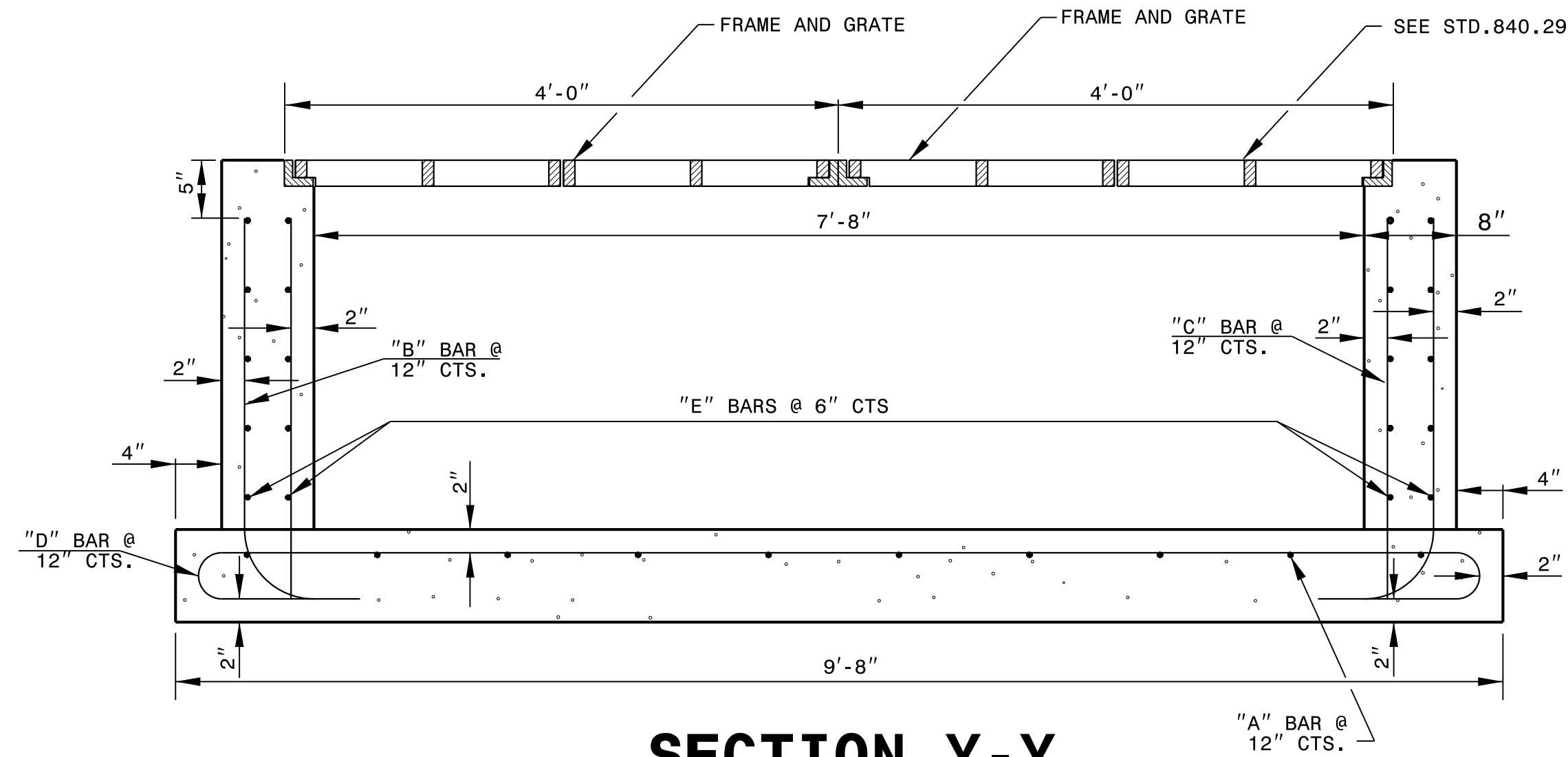
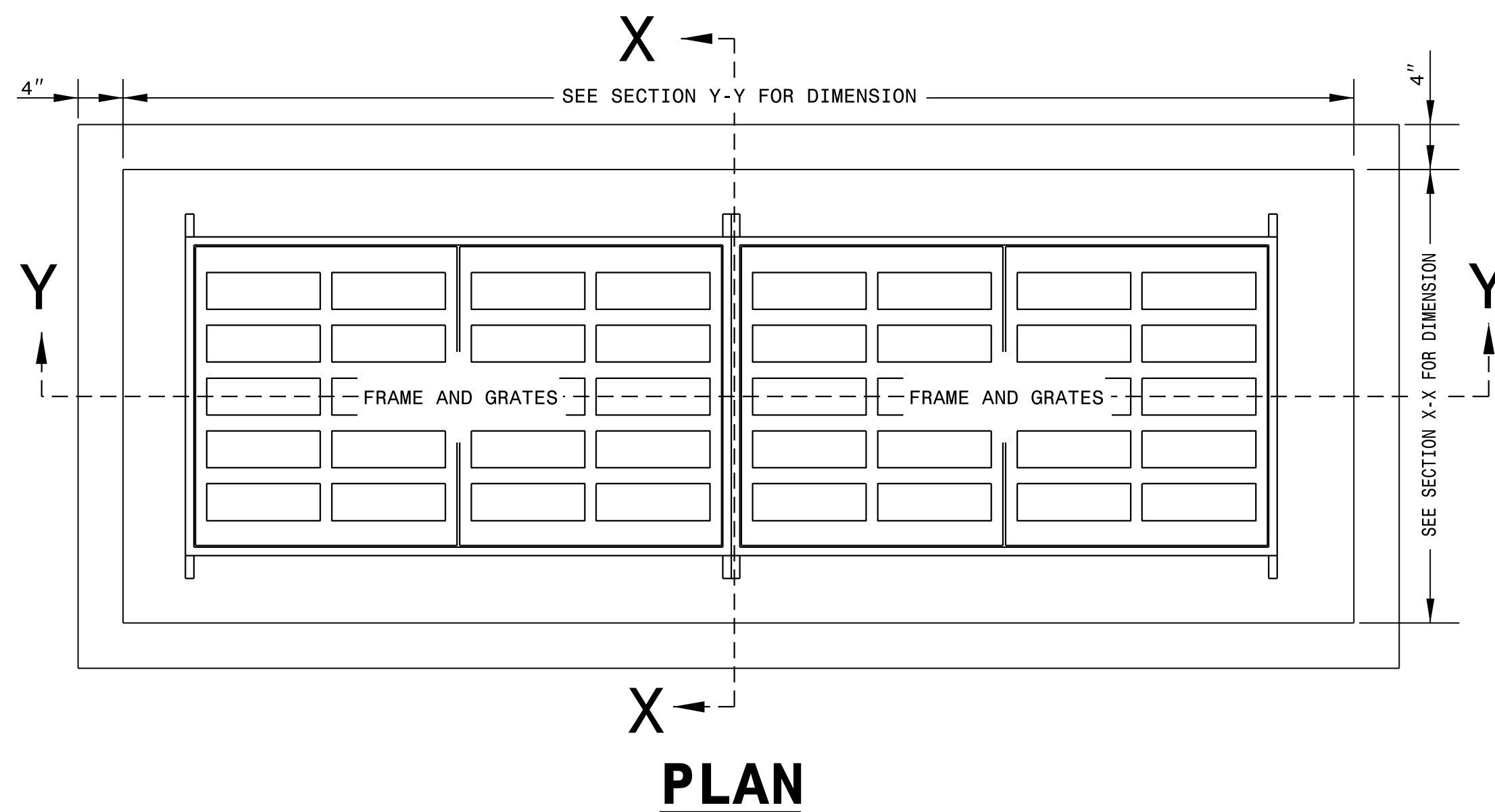


**SECTION X-X**

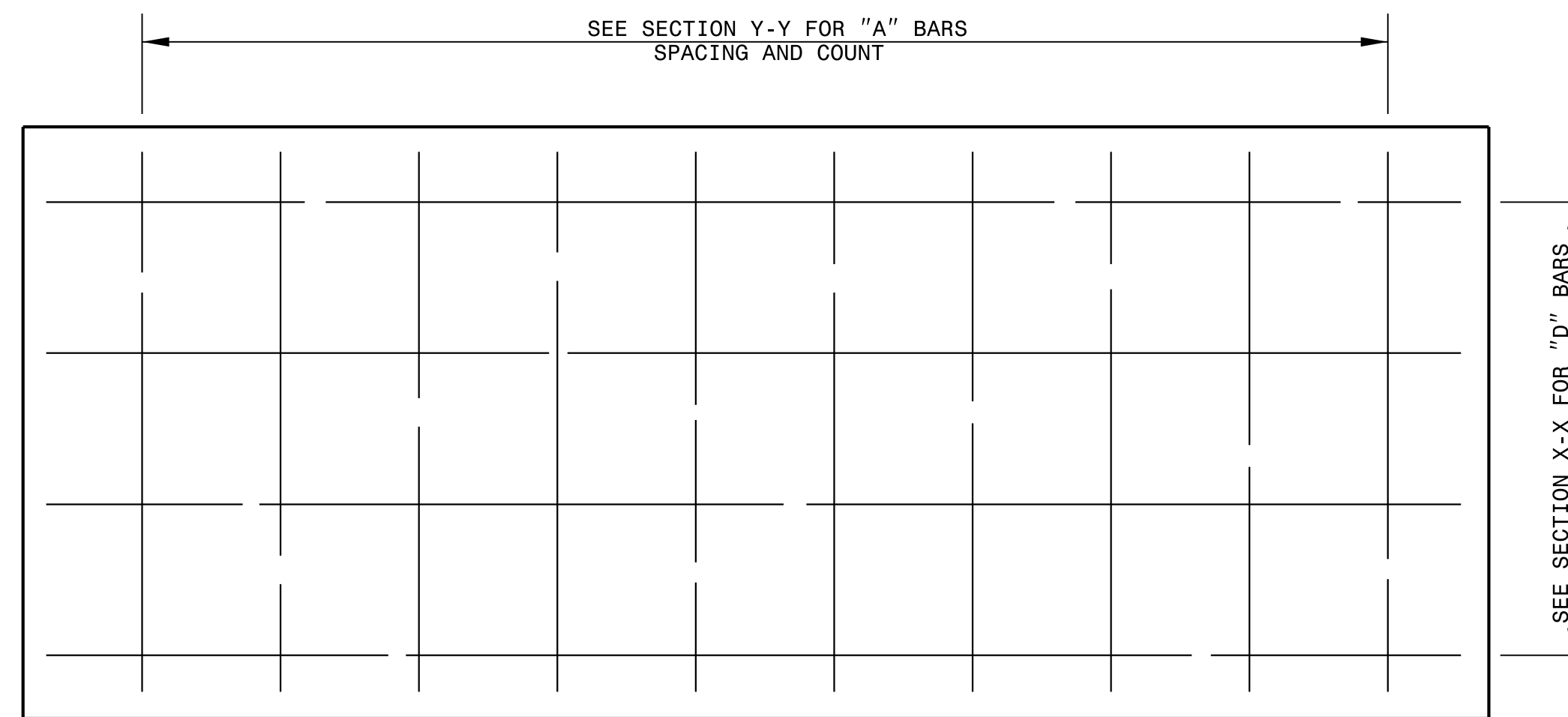


**SECTION Y-Y**

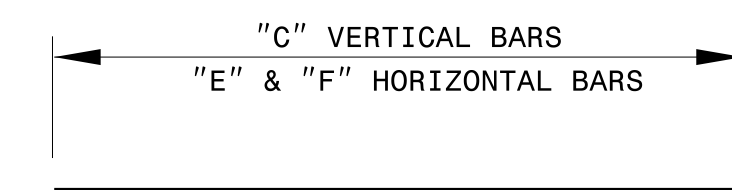
**GENERAL NOTES:**  
 -ALL EXPOSED CONCRETE CORNERS SHALL BE CHAMFERED 1".  
 -FORMS SHALL BE USED TO CONSTRUCT THE BOTTOM SLAB.  
 -IF PIPES ARE SET IN THE BASE SHALL FOLLOW CONSTRUCTION PROCEDURE SHOWN BY STD. DWG. 840.00.  
 -PRECAST UNITS MADE OF CLASS "AA" CONCRETE MAY BE USED IN LIEU OF BRICK MASONRY CONSTRUCTION.  
 -REINFORCING STEEL COST SHALL BE INCLUSIVE IN THE UNIT OR PER METER BID PRICE FOR "MASONRY DRAINAGE STRUCTURE".  
 -REFERENCE STD. DWG. 840.25 FOR FRAME ANCHORAGE.  
 -DROP INLETS OVER 3'-6" DEEP SHALL BE PROVIDED WITH STEPS AS DIRECTED BY STD. DWG. 840.66.  
 -FRAME AND GRATES SHALL BE SEPARATE CONTRACT ITEM.  
 -HORIZONTAL AND VERTICAL DIMENSION MAY BE ADJUSTED AS THE FIELD CONDITIONS AND/OR ALTERNATE DESIGN REQUIRE.  
 -MAXIMUM HEIGHT FOR THIS STRUCTURE SHALL BE 15'.  
 -ALL ADJUSTMENTS ARE TO BE MADE AS DIRECTED BY THE ENGINEER.  
 -DEPTH OF STEEL GRATE WILL REQUIRE DEEPER SEAT ALONG SHORT WALLS.



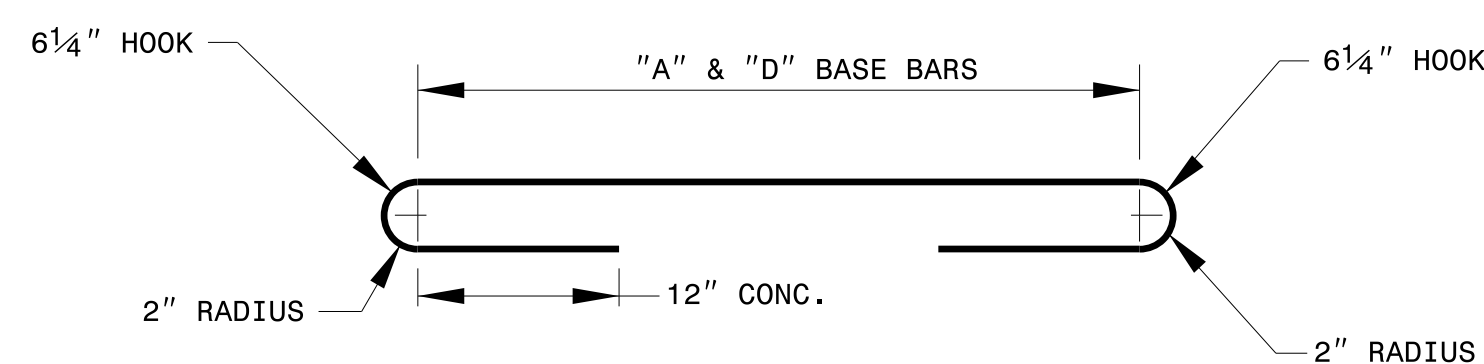
**PLAN**



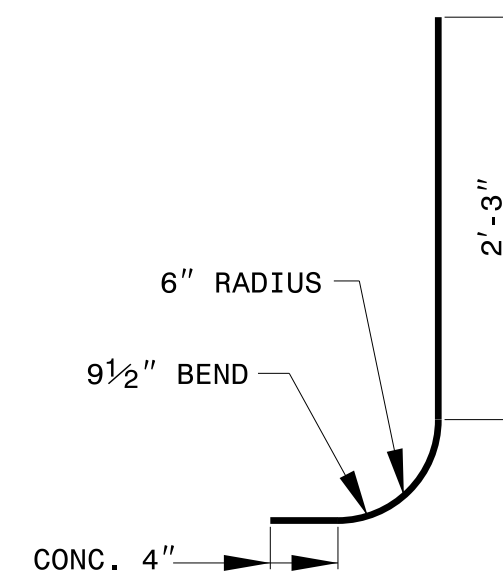
**PLAN OF BASE**



**STRAIGHT BARS**



**BASE BARS**



**CORNER BARS**

BILL OF MATERIALS				
COMMON		CONCRETE ALT.		
BAR	SIZE	LENGTH	QUANTITY	WEIGHT
A	#5	6'-4 1/2"	10	67
B	#5	3'-4 1/2"	24	84
C	#5	2'-8"	24	67
D	#5	12'-6"	4	22
E	#5	3'-0"	20	62
F	#5	8'-6"	20	179
REINF. STEEL (TOTAL WEIGHT LBS.)				481
CONCRETE IN BASE (CU.YDS.)				0.93
CONCRETE IN WALLS (CU.YDS.)				1.42
CONCRETE TOTAL (CU.YDS.)				2.35
CONC. CU.YDS. PER WALL/FOOT OF HEIGHT				1.74
LBS. OF REINF. STEEL IN WALL/FOOT OF HEIGHT				494



**CONTRACT STANDARDS AND DEVELOPMENT UNIT**  
 Office 919-707-6950 FAX 919-250-4119

**TRAFFIC BEARING 4GI**

ORIGINAL BY: \_\_\_\_\_ DATE: \_\_\_\_\_  
 MODIFIED BY: rnbritt DATE: 6-15-16  
 CHECKED BY: \_\_\_\_\_ DATE: \_\_\_\_\_  
 FILE SPEC: details/nbritt/english/urban./u2810ctb4gi.dgn

DOCUMENT NOT CONSIDERED FINAL UNLESS ALL SIGNATURES COMPLETED