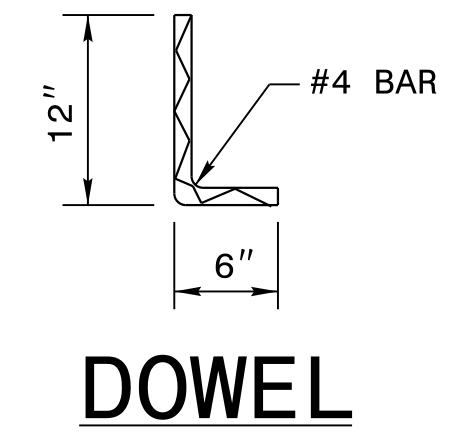
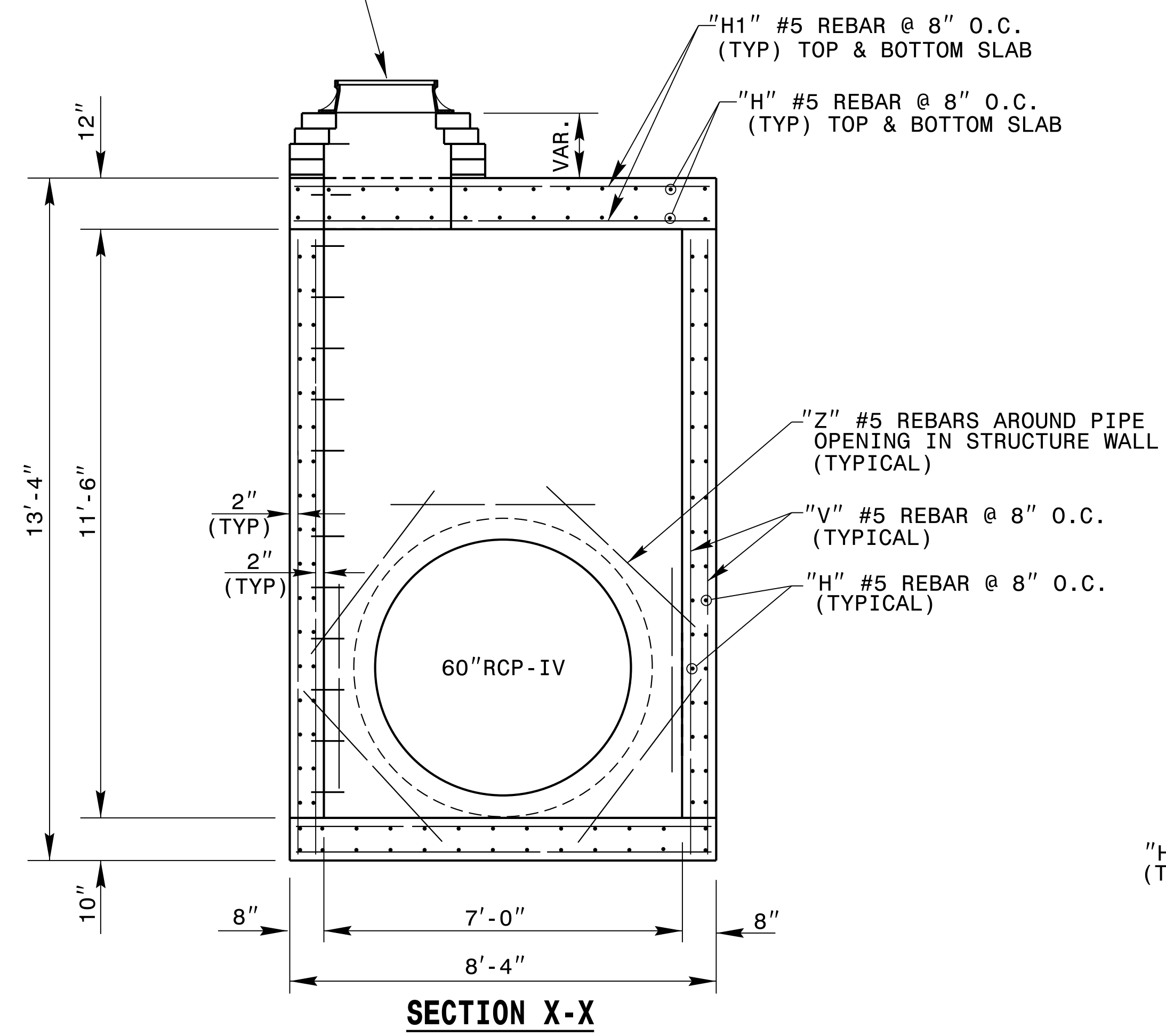


SEE STANDARD 840.54
FOR MANHOLE COVER & FRAME

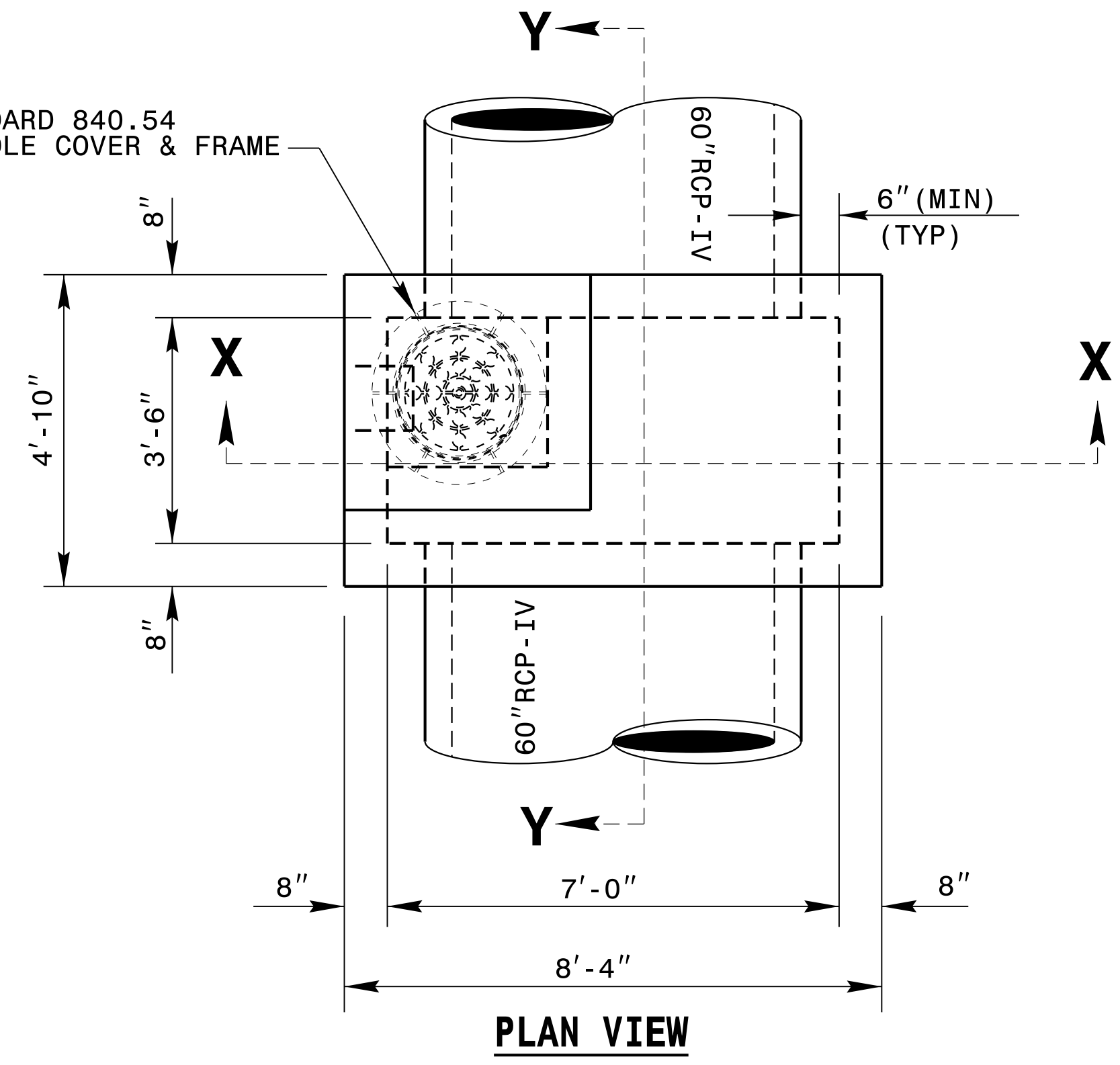


GENERAL NOTES:
 USE CLASS "AA" CONCRETE THROUGHOUT.
 PROVIDE ALL JUNCTION BOXES OVER 3'-6" IN DEPTH WITH STEPS 12" ON CENTER. USE STEPS WHICH COMPLY WITH STD. DRAWING 840.66.
 OPTIONAL CONSTRUCTION - MONOLITHIC POUR, 2" KEYWAY, OR #4 BAR DOWELS AT 12" CENTERS AS DIRECTED BY THE ENGINEER.
 DIMENSIONS MAY BE ADJUSTED AS DIRECTED BY THE ENGINEER.
 INSTALL MANHOLE IN POSITION AS DIRECTED BY THE ENGINEER. CUT AND BEND ALL REBAR CROSSING THIS OPENING TO ALLOW 2" MINIMUM CONCRETE COVERAGE.
 CHAMFER ALL EXPOSED CORNERS 1".
 2" MINIMUM CONCRETE COVERAGE ON ALL REBAR.

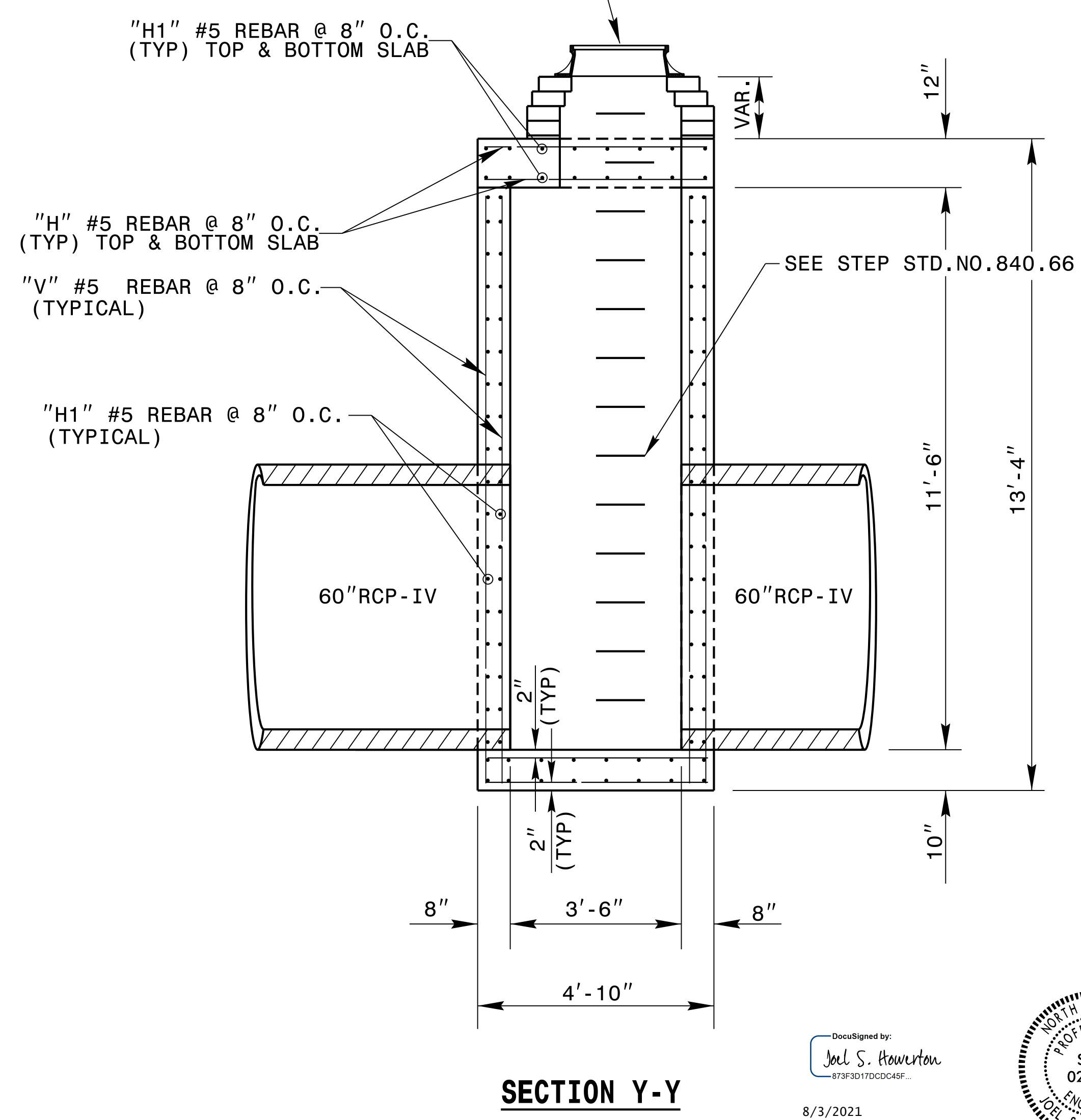
BILL OF MATERIALS				
BAR	NO.	SIZE	LENGTH	WEIGHT
H	120	#5	4'-6"	563
H1	100	#5	8'-0"	834
V	76	#5	12'-0"	951
Z	28	#5	4'-0"	117
TOTAL REINF. STEEL (LBS.)				2465
TOTAL CONC. (CU. YDS.)				9.5

* 0.30 CU. YD. PER FOOT OF RISER HEIGHT
 * 1.30 CU. YD. DEDUCTION FOR 2-60" RC PIPE
 * NO DEDUCTION HAS BEEN MADE FOR PIPES

SEE STANDARD 840.54
FOR MANHOLE COVER & FRAME



SEE STANDARD 840.54
FOR MANHOLE COVER & FRAME



23-OCT-2018 10:33
 S:\Contracts\Projects\Special Details\kkempf\english\U4751_60-tbjb-mh.dgn
 Jhowerton AT_CSD-292595

**DOCUMENT NOT CONSIDERED FINAL
UNLESS ALL SIGNATURES COMPLETED**

**CONTRACT STANDARDS & DEVELOPMENT UNIT
STANDARDS AND SPECIAL DESIGN**
 Office 919-707-6950 FAX 919-250-4119

**TRAFFIC BEARING JUNCTION BOX
FOR 60"RCP-IV**

ORIGINAL BY: _____ DATE: _____
 MODIFIED BY: kkempf DATE: 07/13/17
 CHECKED BY: _____ DATE: _____
 FILE SPEC.: detail/kkempf/english/U4751_60-tbjb-mh.dgn

DocuSigned by:
 Joel S. Howerton
 873F3D7DCC46F...

8/3/2021

