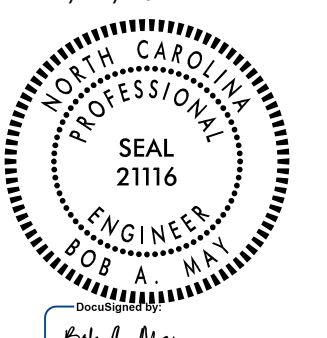




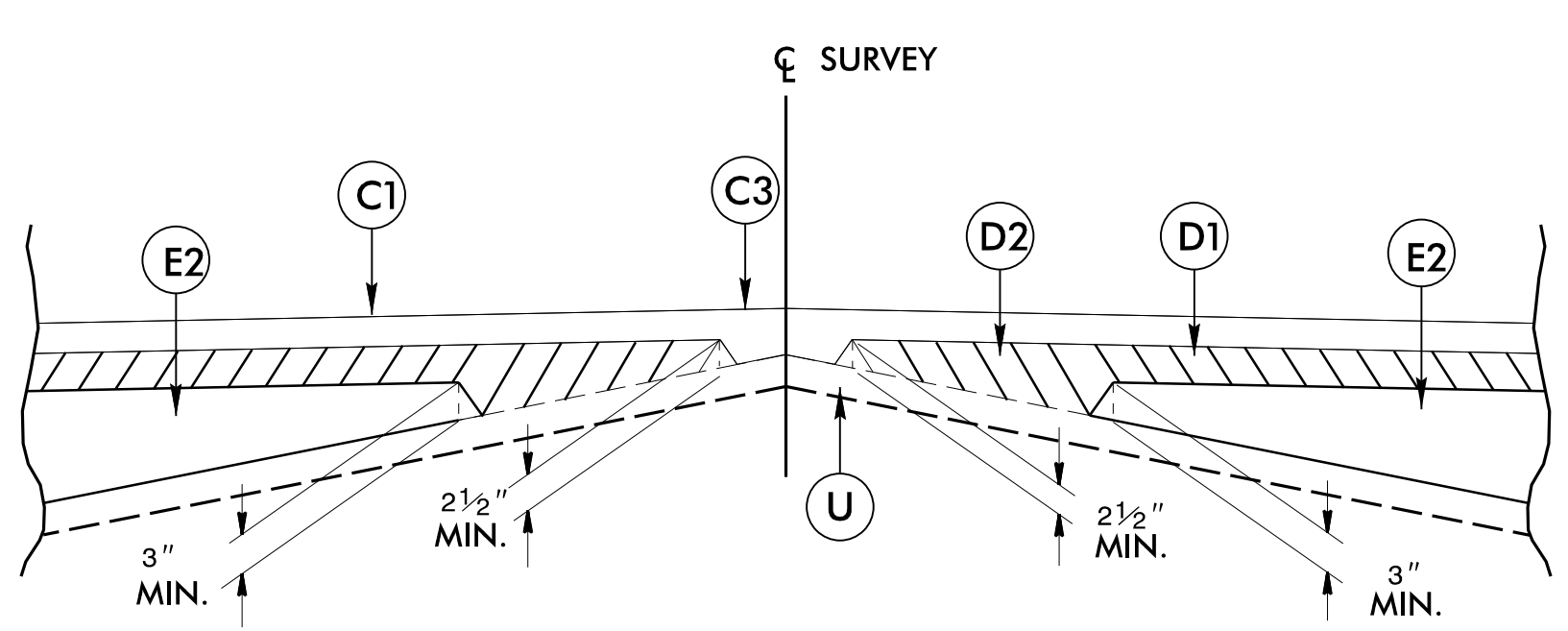
6/2/2021

PAVEMENT SCHEDULE

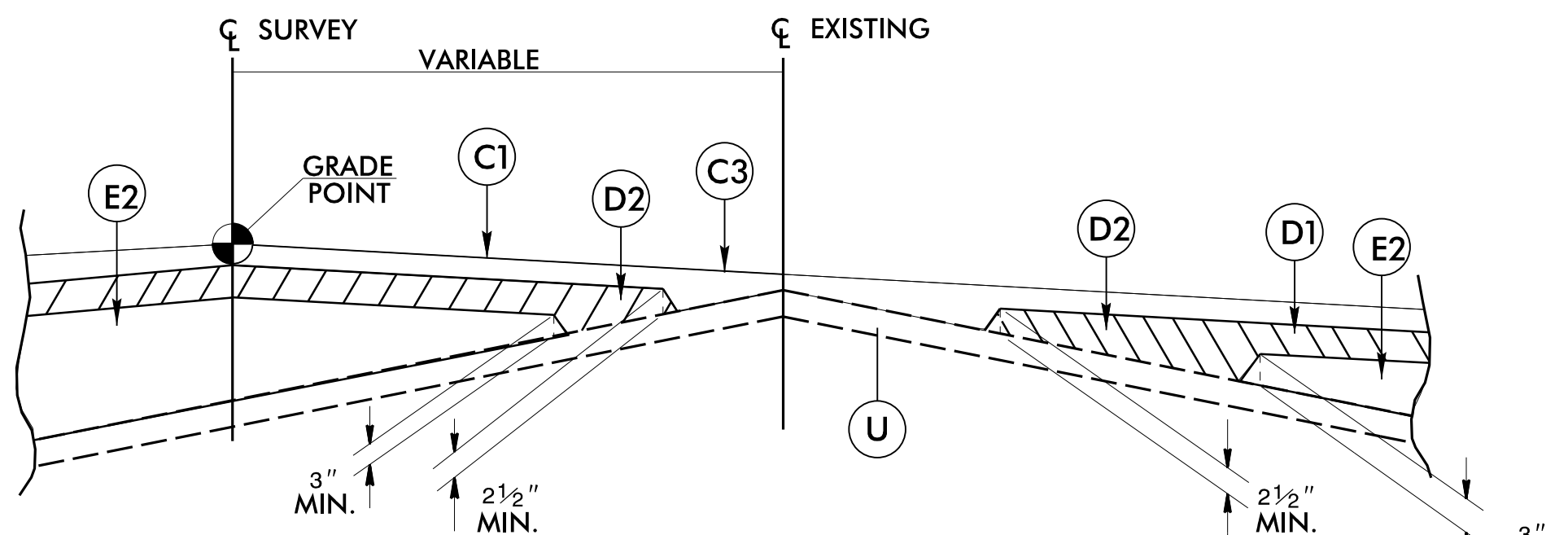
FINAL PAVEMENT DESIGN

C1	PROP. APPROX. 1.5" ASPHALT CONCRETE SURFACE COURSE, TYPE S9.5B, AT AN AVERAGE RATE OF 165 LBS. PER SQ. YD.	E1	PROP. APPROX. 4" ASPHALT CONCRETE BASE COURSE, TYPE B25.0C, AT AN AVERAGE RATE OF 456 LBS. PER SQ. YD.	R4	SHOULDER BERM GUTTER
C2	PROP. APPROX. 3" ASPHALT CONCRETE SURFACE COURSE, TYPE S9.5B, AT AN AVERAGE RATE OF 165 LBS. PER SQ. YD. IN EACH OF TWO LAYERS.	E2	PROP. VAR. DEPTH ASPHALT CONCRETE BASE COURSE, TYPE B25.0C, AT AN AVERAGE RATE OF 114 LBS. PER SQ. YD. PER 1" DEPTH. TO BE PLACED IN LAYERS NOT LESS THAN 3" IN DEPTH OR GREATER THAN 5 1/2" IN DEPTH.	R6	SINGLE FACED CONCRETE BARRIER
C3	PROP. VAR. DEPTH ASPHALT CONCRETE SURFACE COURSE, TYPE S9.5B, AT AN AVERAGE RATE OF 110 LBS. PER SQ. YD. PER 1" DEPTH. TO BE PLACED IN LAYERS NOT TO EXCEED 1 1/2" IN DEPTH.	E3	PROP. APPROX. 10" ASPHALT CONCRETE BASE COURSE, TYPE B25.0C, AT AN AVERAGE RATE OF 570 LBS. PER SQ. YD. IN EACH OF TWO LAYERS	T	EARTH MATERIAL.
D1	PROP. APPROX. 4" ASPHALT CONCRETE INTERMEDIATE COURSE, TYPE I19.0C, AT AN AVERAGE RATE OF 456 LBS. PER SQ. YD.	J1	PROP. 8" AGGREGATE BASE COURSE.	U	EXISTING PAVEMENT.
D2	PROP. VAR. DEPTH ASPHALT CONCRETE INTERMEDIATE COURSE, TYPE I19.0C, AT AN AVERAGE RATE OF 114 LBS. PER SQ. YD. PER 1" DEPTH, TO BE PLACED IN LAYERS NOT LESS THAN 2 1/2" IN DEPTH OR GREATER THAN 4" IN DEPTH.	R1	1'-6" CONCRETE CURB AND GUTTER.	V	MILLING BITUMINOUS PAVEMENT. 1.5" DEPTH.
NOTE: PAVEMENT EDGE SLOPES ARE 1:1 UNLESS SHOWN OTHERWISE.		R3	2'-9" CONCRETE CURB AND GUTTER.	W	VARIABLE DEPTH ASPHALT PAVEMENT (SEE STANDARD WEDGING DETAIL SHEET No. 2A-1)

PROJECT REFERENCE NO. R-2566BA	SHEET NO. 2A-1
ROADWAY DESIGN ENGINEER 7/21/2021 	PAVEMENT DESIGN ENGINEER 7/21/2021 
DOCUMENT NOT CONSIDERED FINAL UNLESS ALL SIGNATURES COMPLETED	
 WETHERILL ENGINEERING	
1223 Jones Franklin Rd. Raleigh, N.C. 27606 License No. F-0377 Bus: 919 851 8077 Fax: 919 851 8107	
TRANSPORTATION PLANNING/DESIGN - BRIDGE/STRUCTURE DESIGN CIVIL/SITE DESIGN - GIS/GPS - CONSTRUCTION OBSERVATION	



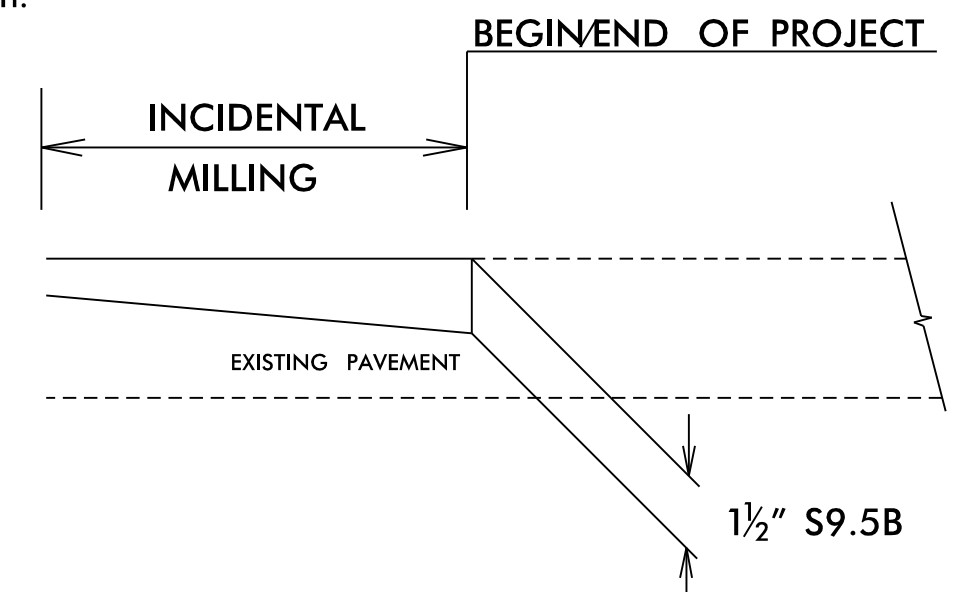
Detail Showing Method of Wedging



Detail Showing Method Of Wedging

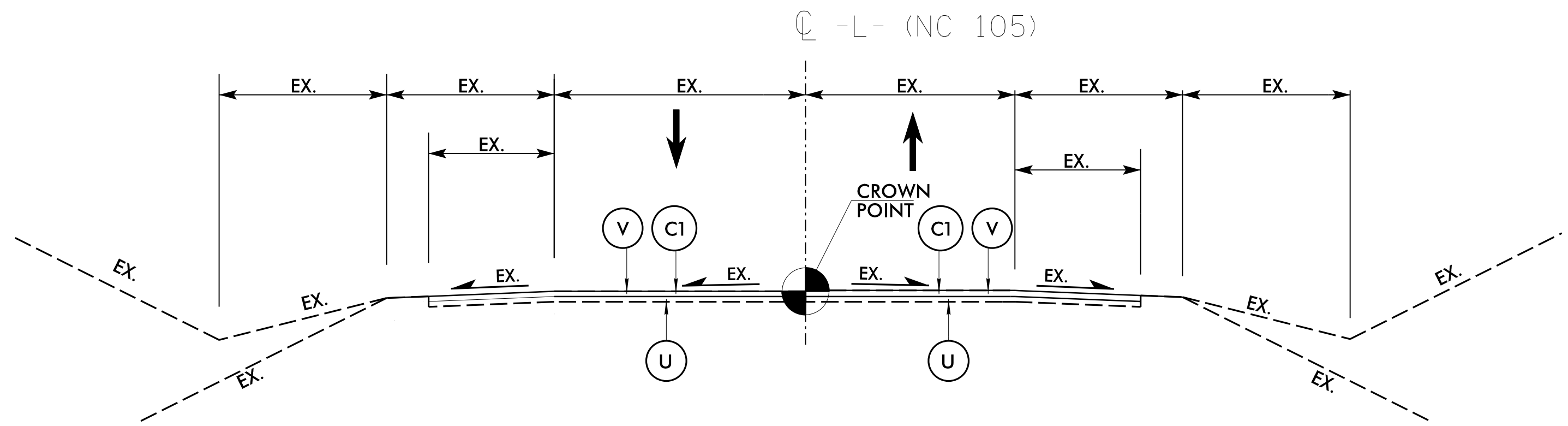
NOTES TO CONTRACTOR

Perform the work in accordance with Section 607 of the January 2018 North Carolina Department of Transportation Standard Specifications for Roads and Structures. Resurfacing will be accomplished at the same time as the milling operation.



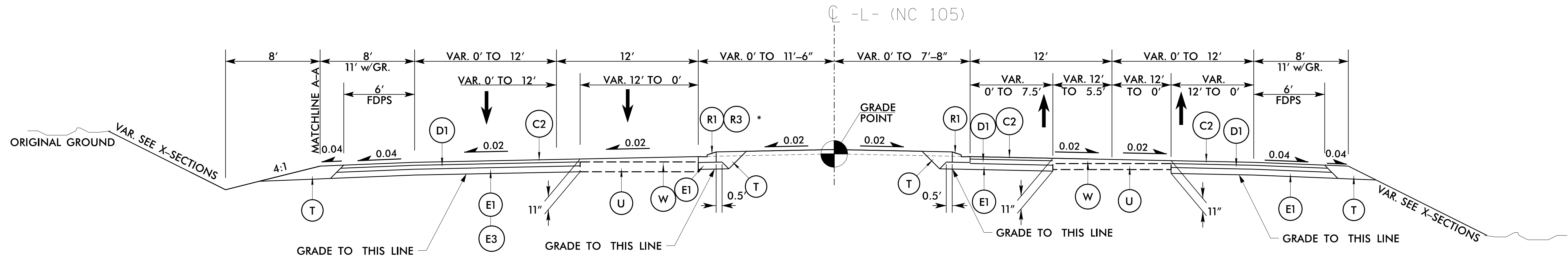
NOTE: UTILIZE INCIDENTAL MILLING TO MAKE PAVEMENT TIE-INS

- L- STA. 151+99.39 TO -L- STA. 152+49.39
- L- STA. 174+14.36 TO -L- STA. 174+64.36
- Y5- STA. 19+00.00 TO -Y5- STA. 19+50.00



MILLING TYPICAL
USE MILLING TYPICAL SECTION

- EL- STA. 146 + 80.00 TO -EL- STA. 148 + 88.75 LB
- L- STA. 148 + 88.75 LA TO -L- STA. 151 + 99.39
- L- STA. 174 + 64.36 TO -L- STA. 176 + 50.00



TYPICAL SECTION NO. 1

USE TYPICAL SECTION NO. 1
-L- STA. 151+99.39 TO -L- STA. 162+95.00 (BEGIN BRIDGE)

** NOTE: UTILIZE E3 FROM -L- STA. 157+50 TO 159+50 LEFT.

- * USE 2'-9" CURB & GUTTER
-L- STA. 154 + 71.00 TO -L- STA. 162 + 05.48
- * TRANSITION FROM 1'-6" C&G TO 2'-9" C&G -L- STA. 154 + 46 to 154 + 71 LT.

6/2/2021 R-2566BA_Rd.dwg 02A-1.txd