

See Sheet 1A For Index of Sheets
See Sheet 1B For Conventional Plan Sheet Symbols

STATE OF NORTH CAROLINA
DIVISION OF HIGHWAYS

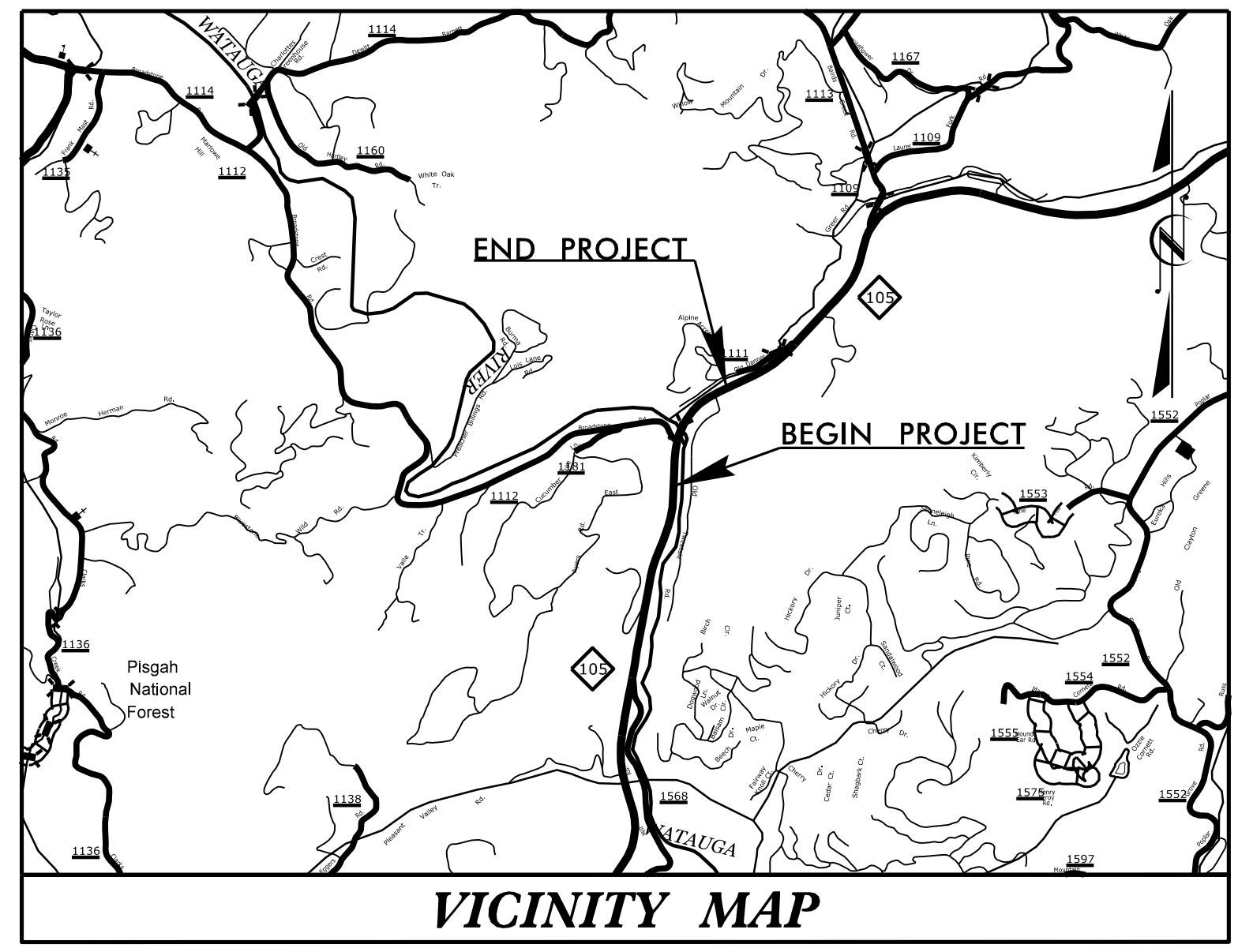
WATAUGA COUNTY

LOCATION: NC 105 - CONSTRUCT NEW BRIDGE OVER WATAUGA RIVER AND LEFT-TURN LANE AT SR 1112 (BROADSTONE RD.) WITHIN THE LIMITS OF R-2566B

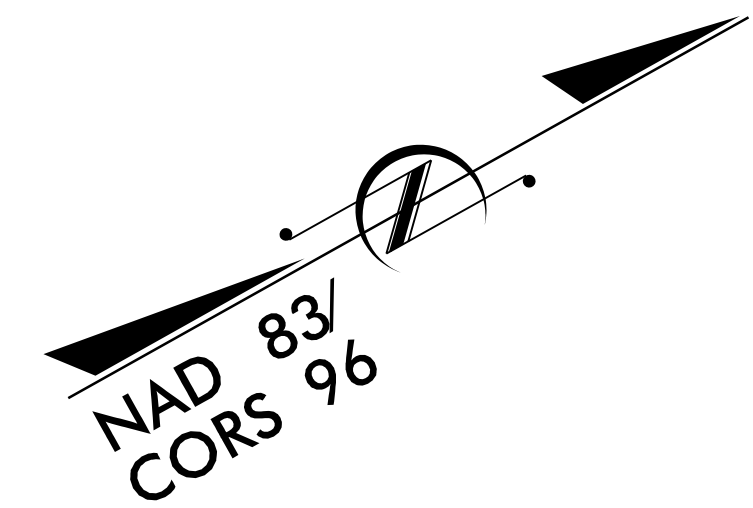
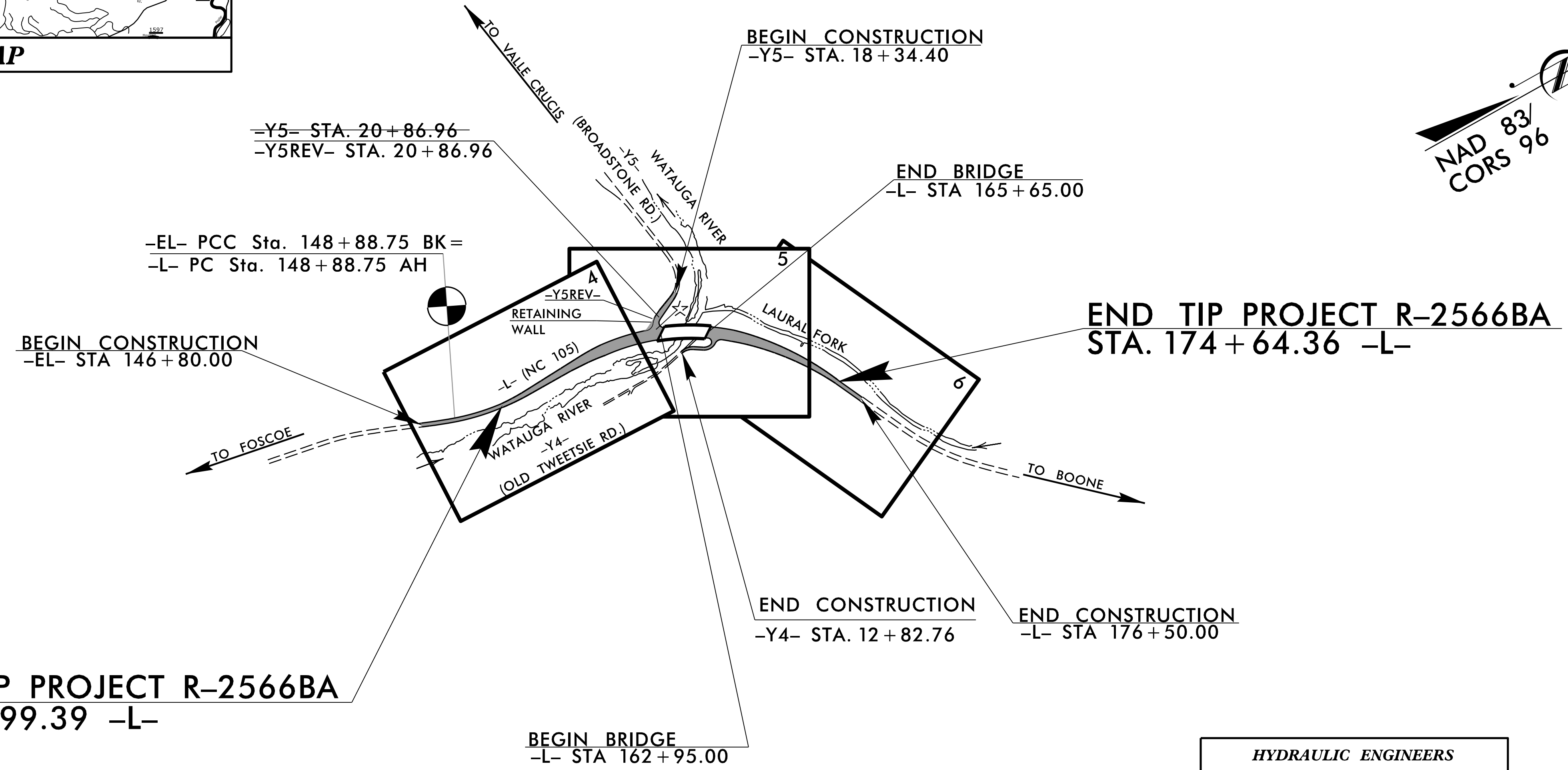
TYPE OF WORK: DRAINAGE, GRADING, PAVING, SIGNALS & STRUCTURE

STATE	STATE PROJECT REFERENCE NO.	SHEET NO.	TOTAL SHEETS
N.C.	R-2566BA	1	
STATE PROJ. NO.	F.A. PROJ. NO.	DESCRIPTION	
37512.1.4	NHP-0105(005)	PE	
37512.2.3		UTIL., ROW	
37512.3.3		CONST.	
DOCUMENT NOT CONSIDERED FINAL UNLESS ALL SIGNATURES COMPLETED			

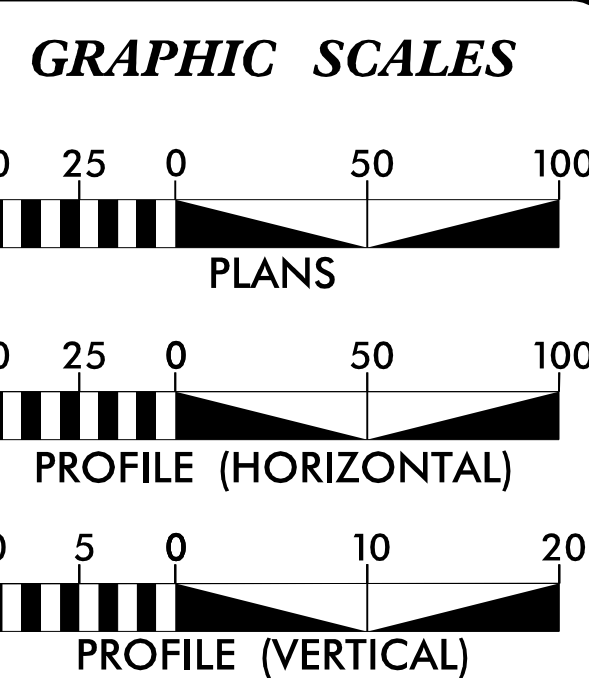
TIP PROJECT: R-2566BA



VICINITY MAP



CONTRACT: C204355



DESIGN DATA

ADT 2021 =	15,500
ADT 2045 =	21,400
K =	7 %
D =	65 %
T =	4 % *
V =	60 MPH
* TTST =	1% DUAL = 3%
FUNC CLASS = ARTERIAL	
STATEWIDE TIER	

PROJECT LENGTH

LENGTH ROADWAY TIP PROJECT R-2566BA	=	0.378 MILES
LENGTH STRUCTURE TIP PROJECT R-2566BA	=	0.051 MILES
TOTAL LENGTH OF TIP PROJECT R-2566BA	=	0.429 MILES

Prepared for the North Carolina Department of Transportation in the Office of:

WETHERILL ENGINEERING
1223 JONES FRANKLIN ROAD
RALEIGH, N.C. 27606
License No. F-0377
Exp: 9/9/2022

2018 STANDARD SPECIFICATIONS

RIGHT OF WAY DATE: SEPTEMBER 21, 2018

LETTING DATE: NOVEMBER 16, 2021

NCDOT CONTACT: NATHAN N. ADIMA, PE
ROADWAY DESIGN PROJECT ENGINEER

EDWARD G. WETHERILL, PE
PROJECT ENGINEER

BOB A. MAY, PE
PROJECT DESIGN ENGINEER

HYDRAULIC ENGINEERS

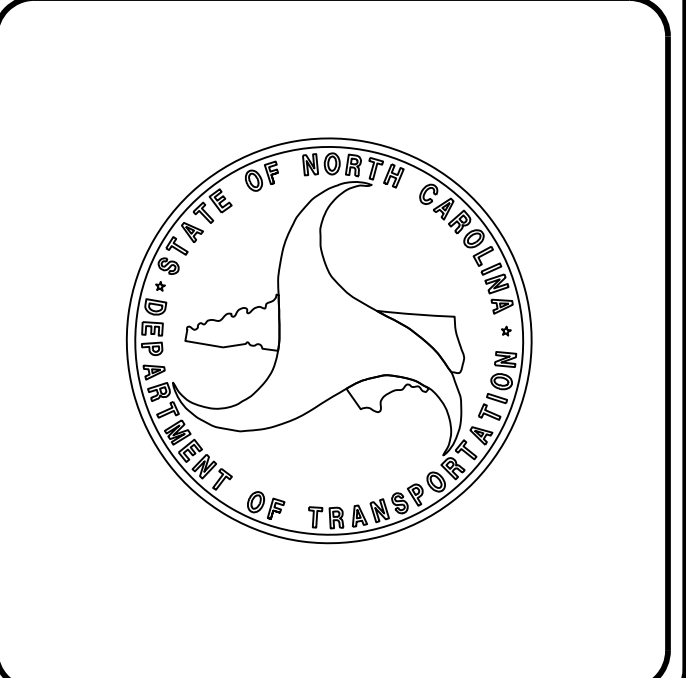
TGS ENGINEERS
706 HILLSBOROUGH ST., SUITE 200
RALEIGH, NC 27603
PH (919) 773-8887
CORP. LICENSE NO.: C-0275

HYDRAULICS ENGINEER
8/4/2021

DocuSigned by:
David B. Petty
SIGNATURE: 2022080408

ROADWAY DESIGN ENGINEER
8/4/2021

DocuSigned by:
Bob A. May
SIGNATURE: 2022080408



8/4/2021 11:51:15 AM R-2566BA_Rdy_psh_01.fsh.dgn USER:BMGY