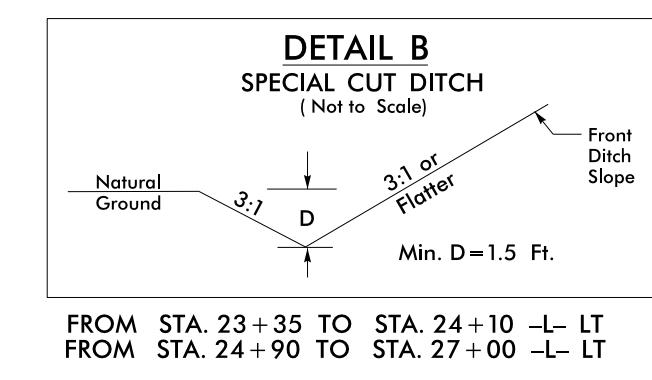
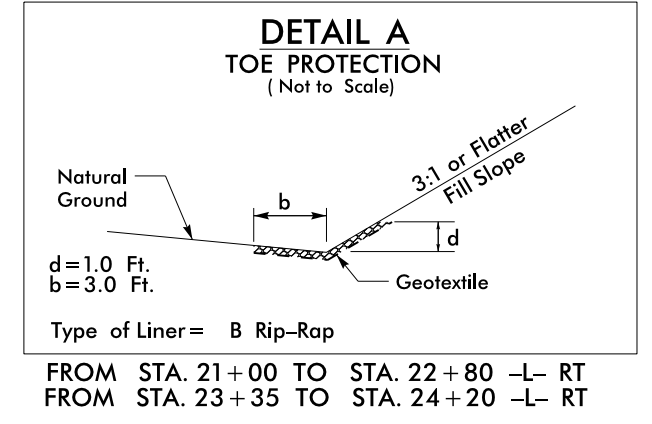
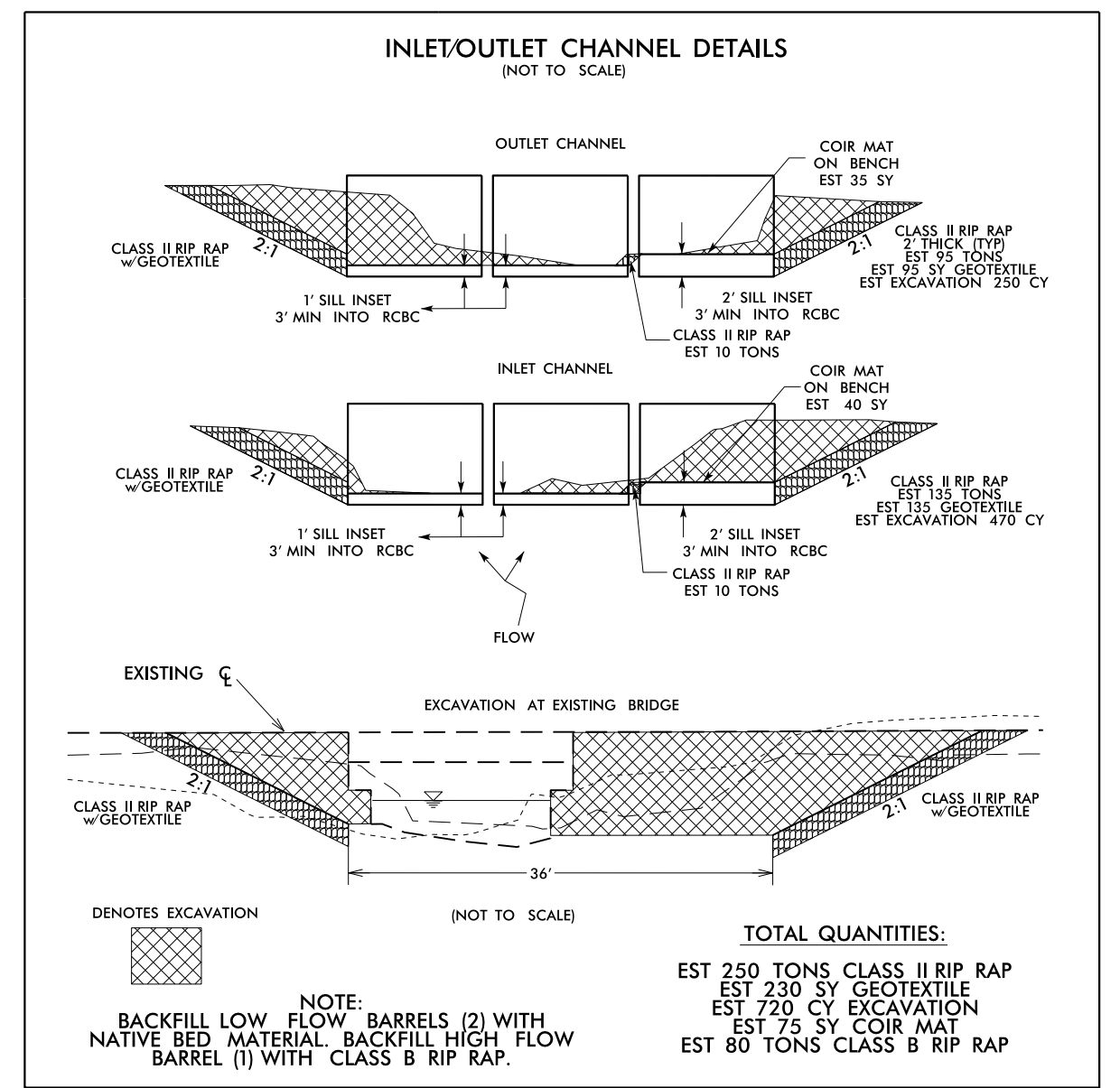
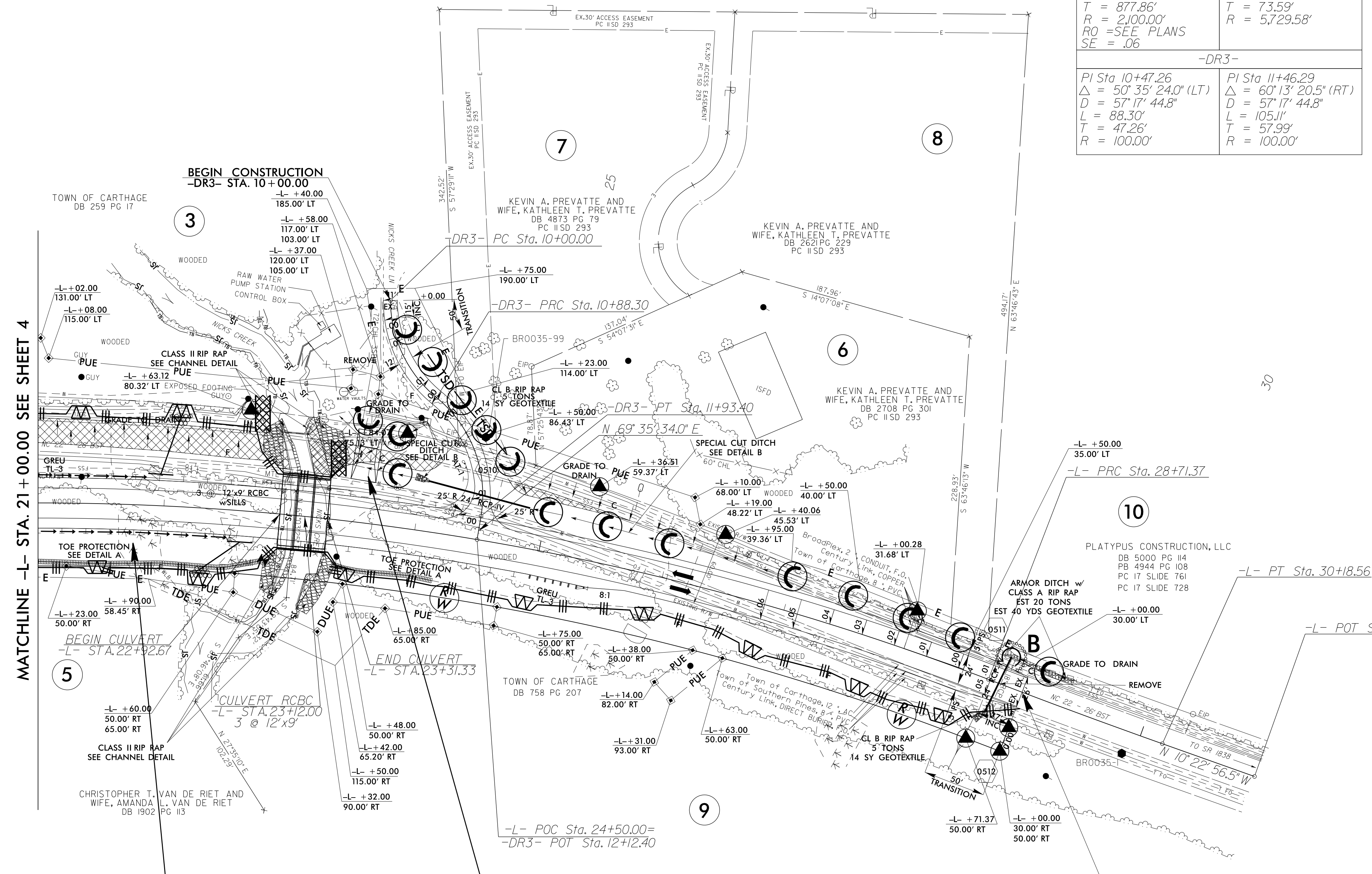
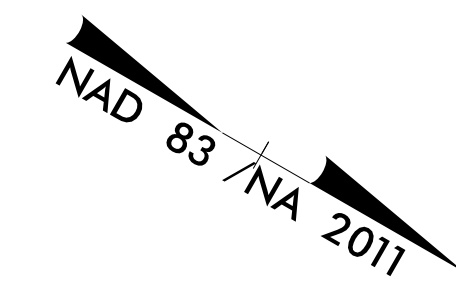


Place Matting for Erosion Control on Slope as Work Allows. Sta. 21+00 to Sta. 23+00 LT

-L-	
PI Sta 20+86.24 Δ = 45° 22' 21.6" (RT) D = 2° 43' 42.1" L = 1,663.00' T = 877.86' R = 2,100.00' RO = SEE PLANS SE = .06	PI Sta 29+44.97 Δ = 1° 28' 18.5" (LT) D = 1° 00' 00.0" L = 147.18' T = 73.59' R = 5,729.58'
-DR3-	
PI Sta 10+47.26 Δ = 50° 35' 24.0" (LT) D = 57° 17' 44.8" L = 88.30' T = 47.26' R = 100.00'	PI Sta 11+46.29 Δ = 60° 13' 20.5" (RT) D = 57° 17' 44.8" L = 105.11' T = 57.99' R = 100.00'



MATCHLINE -L- STA. 21+00.00 SEE SHEET 4

REVISIONS

Place Matting for Erosion Control on Slopes Adjacent to Permitted Wetlands as Work Allows.

20 x 40 x 3
1.5 inch Skimmer
with 0.750 inch
Orifice Diameter
4 ft. weir
ID 5.1

Place Matting for Erosion Control on Slope as Work Allows. Sta. 21+00 to Sta. 28+50 RT

END TIP BR-0035
-L- STA. 29+00.00

NOTE:
UTILIZE TEMPORARY SEDIMENT BASIN OR SPECIAL STILLING BASIN(S) AS STILLING BASIN WHERE APPLICABLE.

8/17/99

C:\PROJECTS\BR-0035\DRAWING\EC-7.CONST.5.DWG