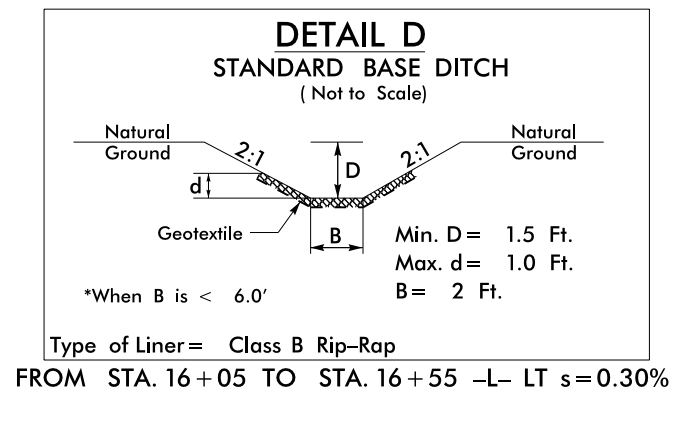
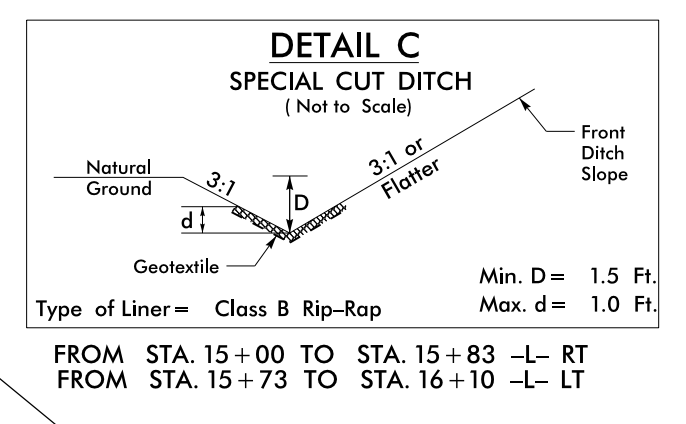
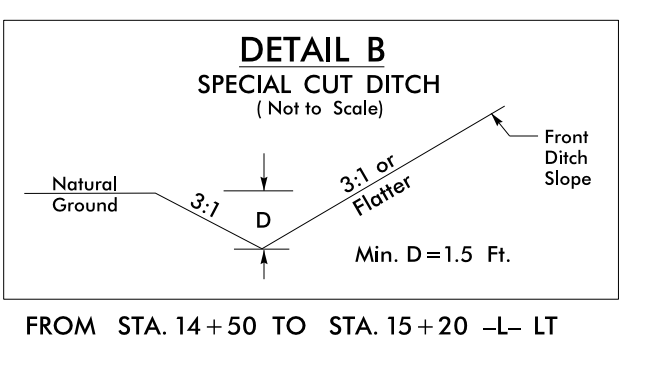
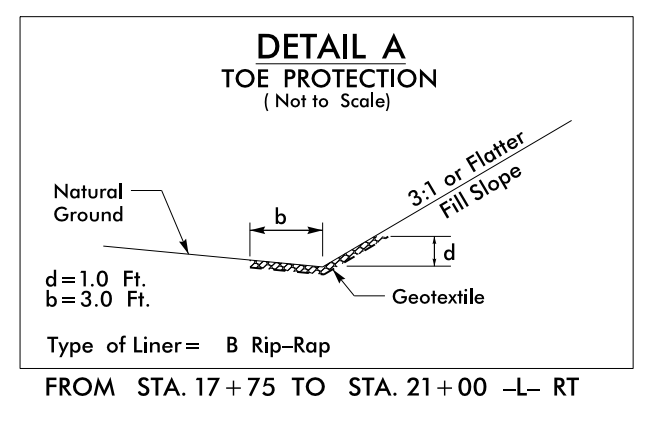
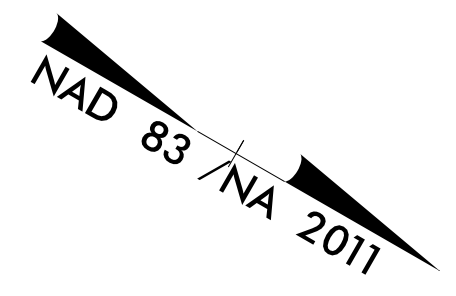


PROJECT REFERENCE NO. BR-0035	SHEET NO. EC-6/CONST.4
RW SHEET NO.	
ROADWAY DESIGN ENGINEER	HYDRAULICS ENGINEER



-L-	-DR2-
PI Sta 20+86.24 Δ = 45° 22' 21.6" (RT) D = 2° 43' 42.1" L = 1,663.00' T = 877.86' R = 2,100.00' RO = SEE PLANS SE = .06	PI Sta 10+36.29 Δ = 14° 30' 38.7" (LT) D = 38° 11' 49.9" L = 37.99' R = 19.10' T = 150.00'
-DRI-	
PI Sta 10+99.84 Δ = 19° 05' 15.8" (LT) D = 28° 38' 52.4" L = 66.63' T = 33.63' R = 200.00'	

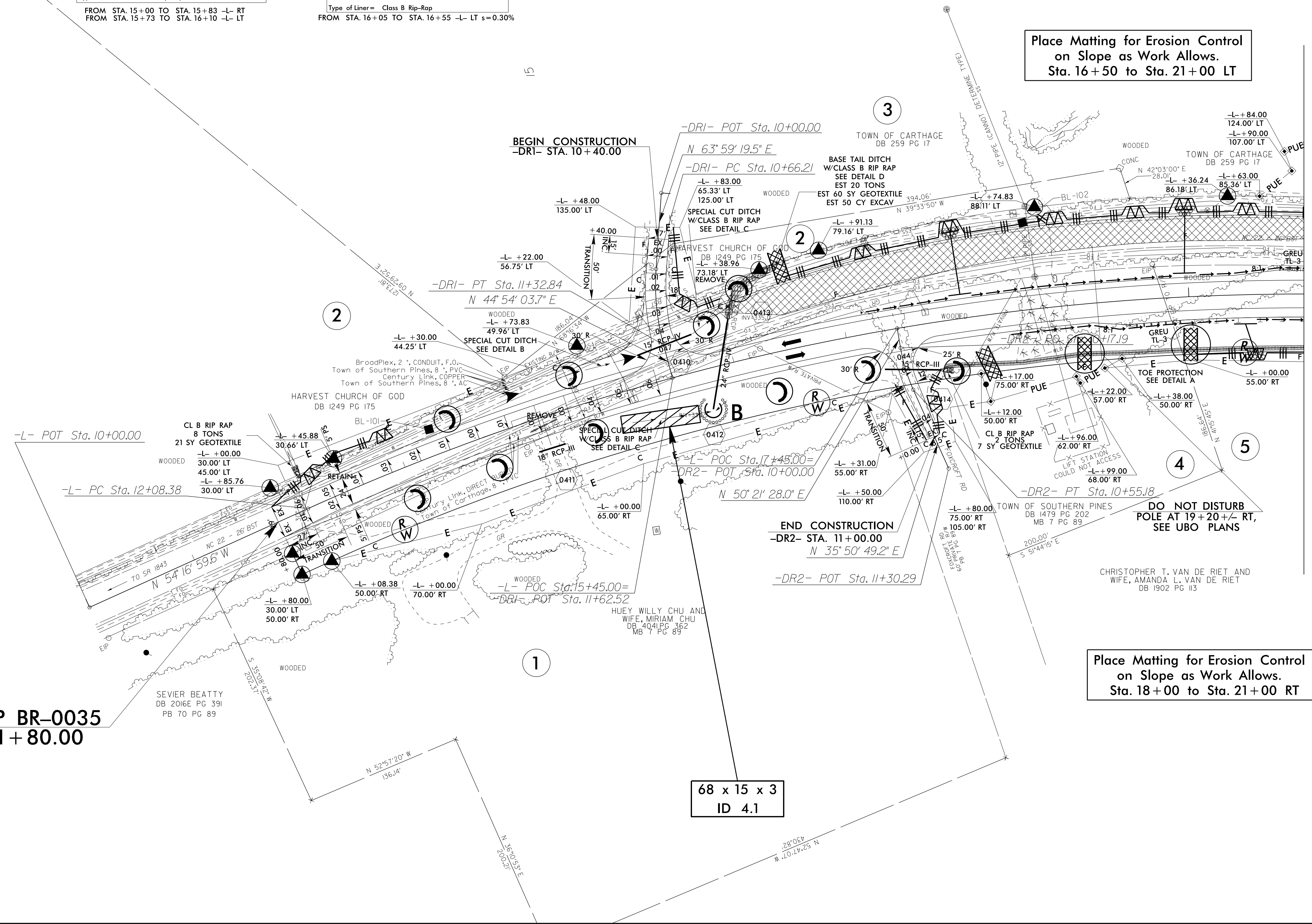


Place Matting for Erosion Control on Slope as Work Allows. Sta. 16+50 to Sta. 21+00 LT

Place Matting for Erosion Control on Slope as Work Allows. Sta. 18+00 to Sta. 21+00 RT

BEGIN TIP BR-0035 -L- STA. 11+80.00

68 x 15 x 3  
ID 4.1



REVISIONS

MATCHLINE -L- STA. 21+00.00 SEE SHEET 5

8/17/99

CONSTRUCTION