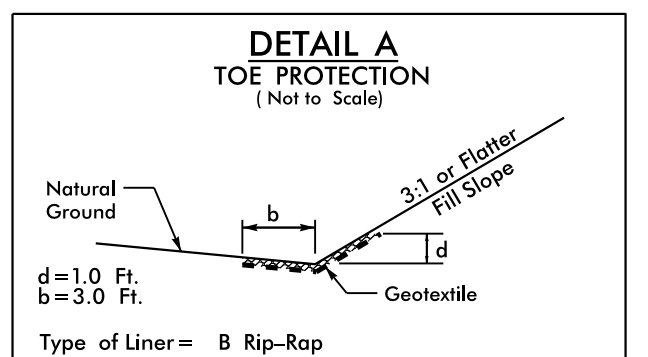
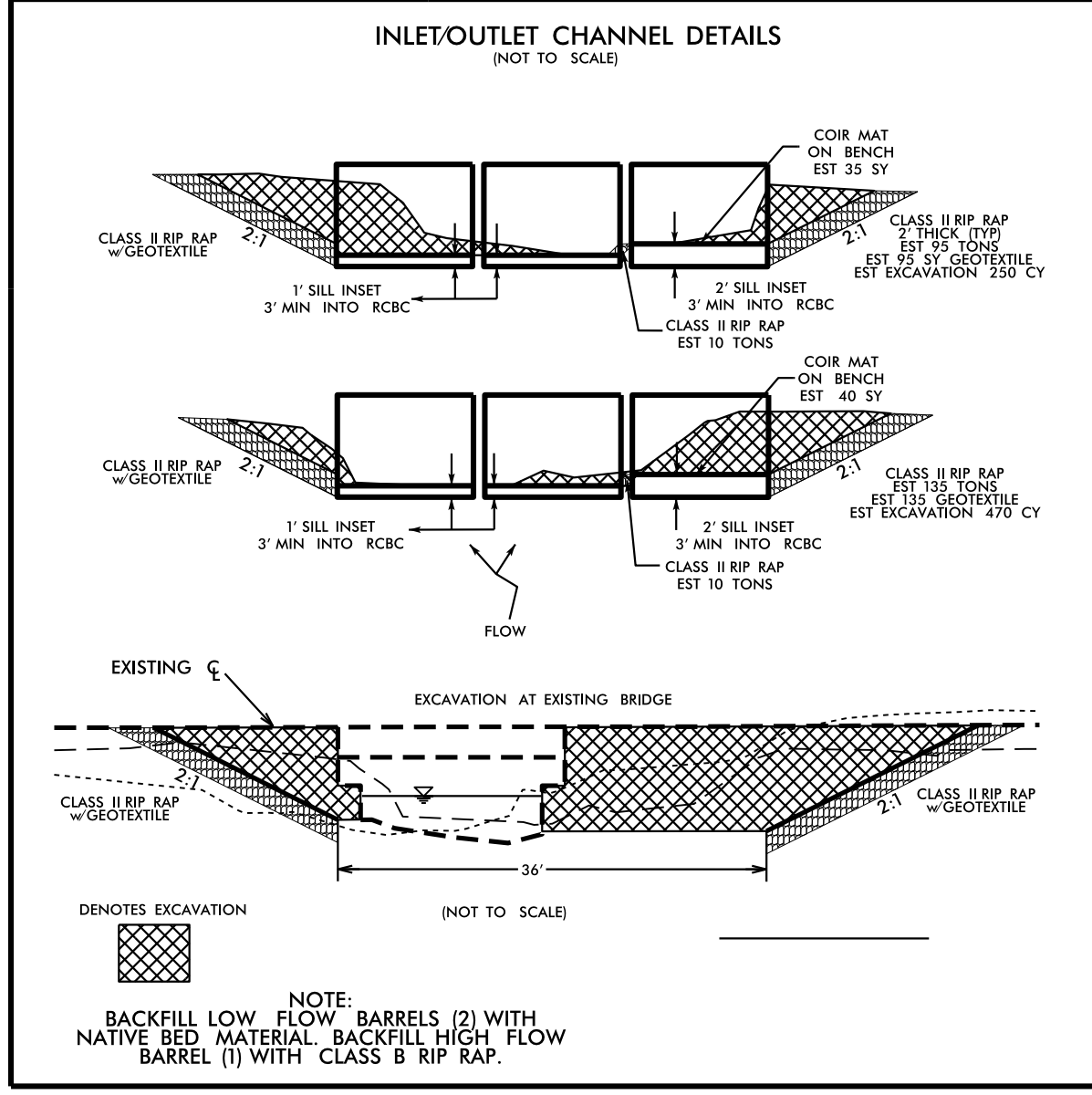
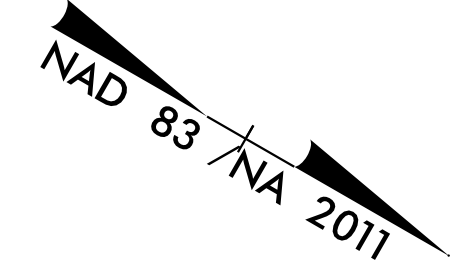
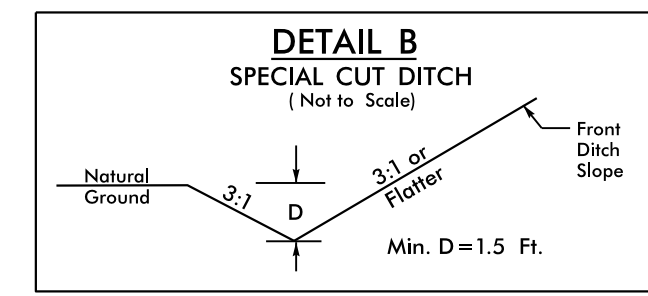


-L-	
PI Sta 20+86.24 Δ = 45° 22' 21.6" (RT) D = 2' 43' 42.1" L = 1,663.00' T = 877.86' R = 2,100.00' RO = SEE PLANS SE = .06	PI Sta 29+44.97 Δ = 1° 28' 18.5" (LT) D = 1' 00' 00.0" L = 147.18' T = 73.59' R = 5,729.58'
-DR3-	
PI Sta 10+47.26 Δ = 50° 35' 24.0" (LT) D = 57' 17' 44.8" L = 88.30' T = 47.26' R = 100.00'	PI Sta 11+46.29 Δ = 60° 13' 20.5" (RT) D = 57' 17' 44.8" L = 105.11' T = 57.99' R = 100.00'

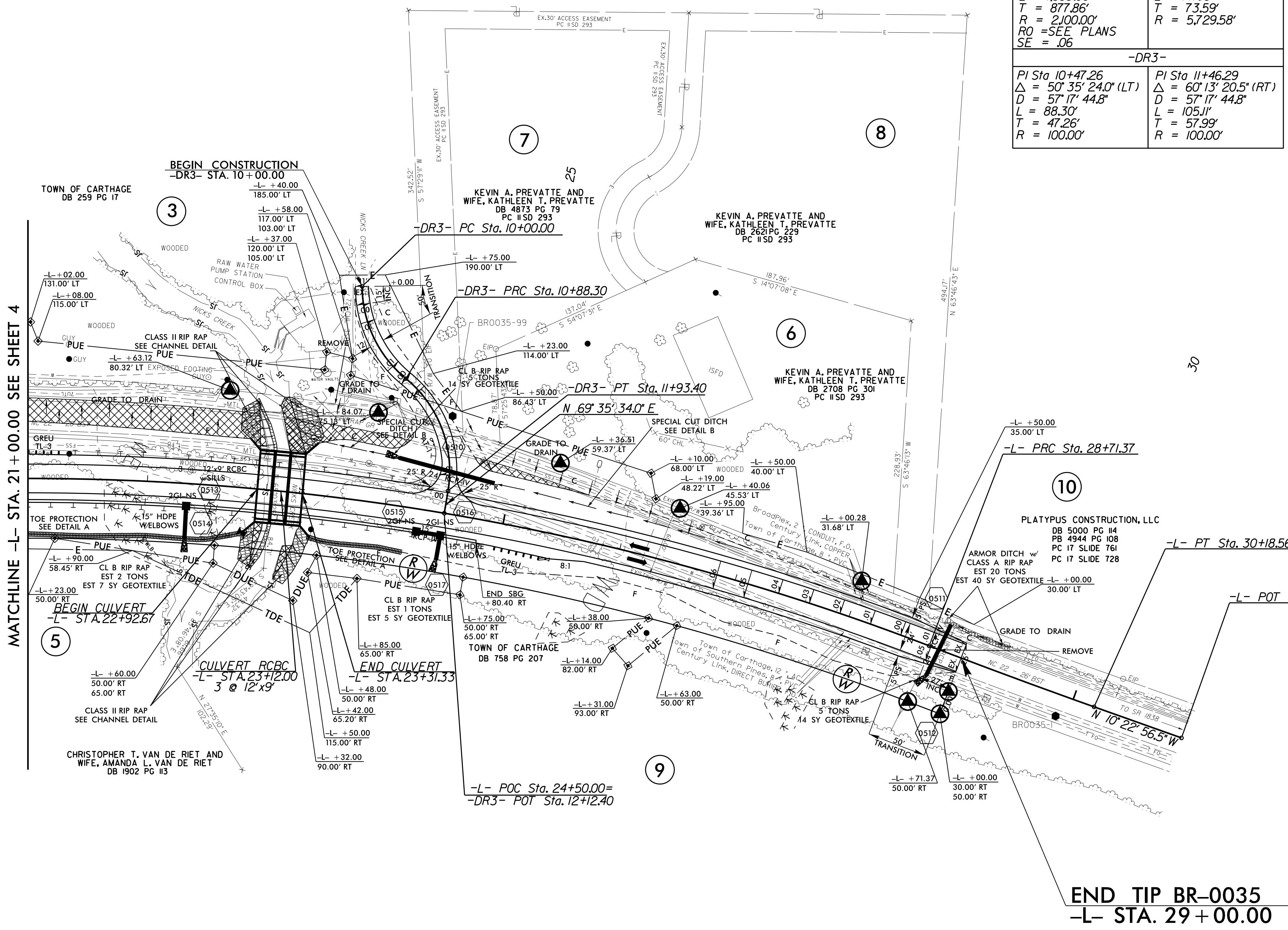


FROM STA. 21+00 TO STA. 22+80 -L- RT  
EST 40 TONS CL B RIP RAP; 120 SY GEOTEXTILE  
FROM STA. 23+35 TO STA. 24+20 -L- RT  
EST 20 TONS CL B RIP RAP; 55 SY GEOTEXTILE



FROM STA. 23+35 TO STA. 24+10 -L- LT  
FROM STA. 24+90 TO STA. 27+00 -L- LT

**NOTES:**  
FOR -L- PROFILE, SEE SHEET 6  
FOR -DR3- PROFILE, SEE SHEET 7  
FOR CULVERT, SEE SHEETS C-1 THROUGH C-8



REVISIONS

8/17/19

20-SEP-2021 14:28 BR0035\_Rdy\_psh\_5.dgn